

DRIVEN and STATIC TOOLING
For
Expand Machinery



10139 BERGIN RD.
HOWELL, MI 48843
PHONE : 877-91-TOOLS (810-632-4446)
FAX: 877-92-TOOLS (810-632-4467)
EMAIL: info@mdtooling.com
WEBSITE: www.mdtooling.com

Live Tooling



M. T. Marchetti, a major live tool manufacturer in northern Italy, is a leader in live tool technology. The formula is simple. Use only the best angular contact high-speed bearings available. Add to this an exacting tolerances for all ground shafts, gears and bearing pocket features. Next, develop a sealed system that **will not** allow any contamination from chips or coolant.

Top this all off with a superior design and you end up with a live tool that is more rigid, faster and will last longer. **We back this up with a 2-Year factory warranty.**

Our Live Tool Warranty

Our tooling will give years of service in the most demanding applications. The superior design and rugged construction has proven this over the last 12 years. The reliability of our tools allows us to provide a 2-year factory warranty, for non-wear components.

MD Tooling will repair any defective tool holders for a period of 2 years from the date of purchase.

Product Range

We have the largest range of live tooling available for most major machine tool manufactures.

Our available products include an extensive line of standard live tooling as well as specialty tool holders such as 0-180 adjustable angle tool holders, gear hobbors, and even worm gear generators. Our product range includes geared up holders to 60,000 RPM and are engineered for 1,000 PSI coolant through.

We are an industry leader in providing complete tooling solutions with hundreds of static tool options as well.

Technical Support

Here at MD Tooling we have a full technical support department with over 35 years of CNC experience.

Our highly qualified staff can help with part processing, tooling up a job from a blue print and even assist with part programming. Applications Engineers are always available by phone to answer any questions you may have about our tooling or any other CNC related issue.

Stock and Replenishment

MD Tooling maintains an extensive inventory of tooling in our warehouse in Michigan. Our current "fill" rate on orders is 93% from our stock in Michigan for same day shipping.

Should you require a non-stock item, our manufacturer, M.T. Marchetti also maintains a large inventory in Italy. Tooling can be obtained in as little as 3-5 business days.

Shipping

MD Tooling realizes that when you need tooling, often you can't wait until the next day. We process orders and ship from available stock right up until 4PM EST to make certain we get your tooling solutions to you as quickly as possible.

We regularly ship throughout the day via UPS, FedEx or any other carrier that a customer requests.



10139 Bergin Road
Howell, MI 48843
Phone: (810) 632-4446
Fax: (810) 632-4467
Email: info@mdtooling.com
Web: www.mdtooling.com

- Fast, Friendly, Reliable Service!
- Quality tooling at highly competitive pricing.
- 2-Year Warranty on all live tools.
- Extensive inventory. We currently ship over 93% of all orders same day.
- In-house repair services available.
- If a warranty tool needs to be returned for inspection, service or repair, loaner tools are available to keep your machine tool production up and running.
- More specialty tool holders than any other manufacturer.
- Custom tool holders available.
- All available tooling may not be shown in this catalog. If you can't find the holder you're looking for, please contact our office for assistance.



Table of Contents

Categorized Listing

CYCLONE-52 TTM / CYCLONE-52 3TM / CYCLONE-70 TTM / CYCLONE-70 3TM / CYCLONE-78 MSY - CT1/CT2/CT3-52/65 YM/Y2M/Y2MS 1

DRIVEN 1

RADIAL DRIVEN TOOL	1
RADIAL GEARED-DOWN 2:1 DRIVEN TOOL REDIRECTED IN Z BY 68mm	1
RADIAL GEARED-UP 1:2 DRIVEN TOOL REDIRECTED IN Z BY 68mm	2
RADIAL GEARED-UP 1:2 SINGLE SIDE TWIN HEAD DRIVEN TOOL IN Y	2
AXIAL DRIVEN TOOL H=55mm	3
AXIAL DRIVEN TOOL H=65mm	3
AXIAL DRIVEN TOOL H=65mm	4
QUICK CHANGE AXIAL MTSK DRIVEN TOOL H=65mm	4
AXIAL GEARED-UP 1:2 DRIVEN TOOL	5
AXIAL OPPOSITE FACE TWIN DRIVEN TOOL H=65mm	5
0-180° ADJUSTABLE ANGLE DRIVEN TOOL	6
0-180° ADJUSTABLE ANGLE DRIVEN TOOL WITH DIGITAL DISPLAY	6
0-180° ADJUSTABLE ANGLE DRIVEN TOOL GEARED-UP 1:2	7
0-180° ADJUSTABLE ANGLE DRIVEN TOOL GEARED-UP 1:2 WITH DIGITAL DISPLAY	7
DRIVEN GEAR HOBBER	8
QUICK CHANGE AXIAL MTSK DRIVEN TOOL FOR POWER SKIVING H=90mm	8
BROACHING/SLOTING DRIVEN TOOL 50mm STROKE	9
BROACHING/SLOTING DRIVEN TOOL 25mm STROKE	9

STATIC 10

RADIAL SINGLE STATIC TOOL	10
RADIAL SINGLE SIDE TWIN STATIC TOOL	10
RADIAL DOUBLE STATIC TOOL	10
RADIAL BLADE HOLDER WITH BLADE KIT	11
RADIAL BLADE HOLDER WITH INTERNAL COOLANT - BLADE KIT NOT INCLUDED	11
AXIAL SINGLE STATIC TOOL	12
AXIAL SINGLE BORING BAR HOLDER H=75mm	12
AXIAL SINGLE BORING BAR HOLDER H=75mm	12
AXIAL DOUBLE BORING BAR HOLDER	13
AXIAL 3+3 POSITION BORING BAR HOLDER	13
AXIAL SINGLE STATIC TOOL CAPTO C4	14
AXIAL REAR-SET BORING SINGLE STATIC TOOL CAPTO C4	14

WTS-52/65 Y2M 16ST. - ML-250 15

DRIVEN 15

RADIAL DRIVEN TOOL	15
QUICK CHANGE RADIAL MTSK-40 DRIVEN TOOL	15
RADIAL DRIVEN TOOL RE-DIRECTED IN Z BY 36mm	16
RADIAL GEARED-DOWN 2:1 DRIVEN TOOL RE-DIRECTED IN Z BY 36mm	16
RADIAL GEARED-UP 1:2 DRIVEN TOOL RE-DIRECTED IN Z BY 36mm	17
RADIAL ±30° ADJUSTABLE ANGLE DRIVEN TOOL REDIRECTED BY 30mm	17
AXIAL DRIVEN TOOL H=70mm	18
QUICK CHANGE AXIAL MTSK-40 DRIVEN TOOL H=70mm	19
AXIAL REAR-SET DRIVEN TOOL	19
AXIAL GEARED-UP 1:2 DRIVEN TOOL H=70mm	20
AXIAL GEARED-UP 1:5.625 DRIVEN TOOL H=70mm	20
AXIAL DRIVEN TOOL FOR INTERNAL POLYGON MAKING H=70mm	21
AXIAL OPPOSITE FACE DRIVEN TOOL H=70mm	21
AXIAL OPPOSITE FACE DRIVEN TOOL H=70mm	22
AXIAL OPPOSITE FACE REAR-SET DRIVEN TOOL	22
AXIAL GEARED-UP 1:2 OPPOSITE FACE TWIN DRIVEN TOOL H=70mm	22
AXIAL SINGLE SIDE TWIN HEAD DRIVEN TOOL H=70mm	23
AXIAL GEARED-UP 1:2 SINGLE SIDE TWIN HEAD DRIVEN TOOL IN Y H=70mm	24
AXIAL MULTIPLE 2+2 OUTLET DRIVEN TOOL IN Y H=70mm	24
0-180 ADJUSTABLE ANGLE DRIVEN TOOL H=54mm	25

0-180 ADJUSTABLE ANGLE DRIVEN TOOL WITH DIGITAL DISPLAY H=54mm	25
0-180 ADJUSTABLE ANGLE DRIVEN TOOL H=47.5mm	26
0-180 ADJUSTABLE ANGLE DRIVEN TOOL WITH DIGITAL DISPLAY H=47.5mm	26
0-180 ADJUSTABLE ANGLE DRIVEN TOOL H=83mm	27
0-180 ADJUSTABLE ANGLE DRIVEN TOOL WITH DIGITAL DISPLAY H=83mm	27
0-180 ADJUSTABLE ANGLE GEARED-UP 1:2 DRIVEN TOOL H=47.5mm	28
0-180 ADJUSTABLE ANGLE DRIVEN TOOL GEARED-UP 1:2 WITH DIGITAL DISPLAY H=47.5mm	28
0-180 ADJUSTABLE ANGLE GEARED-UP 1:2 DRIVEN TOOL H=83mm	29
0-180 ADJUSTABLE ANGLE DRIVEN TOOL GEARED-UP 1:2 WITH DIGITAL DISPLAY H=83mm	29
DRIVEN GEAR HOBBER	30
RADIAL DRIVEN GEAR HOBBER	30
BROACHING/SLOTING TOOL 50mm STROKE H=85mm	31
BROACHING/SLOTING TOOL 25mm STROKE H=85mm	31

STATIC 32

RADIAL SINGLE STATIC TOOL	32
RADIAL DOUBLE BLADE HOLDER WITH BLADE KIT	32
RADIAL BLADE HOLDER WITH INTERNAL COOLANT-BLADE KIT NOT INCLUDED	32
AXIAL SINGLE BORING BAR HOLDER H=75mm	33
AXIAL SINGLE STATIC TOOL CAPTO C4	34
AXIAL REAR-SET BORING BAR HOLDER CAPTO C4	34

ACCESSORIES 35

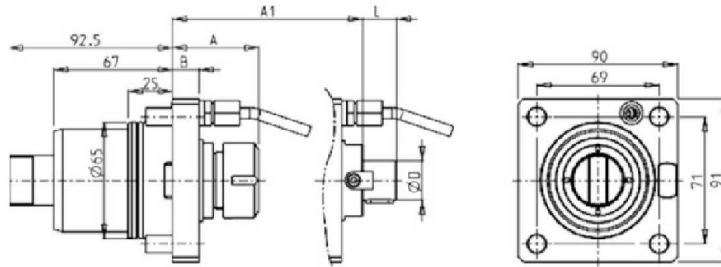
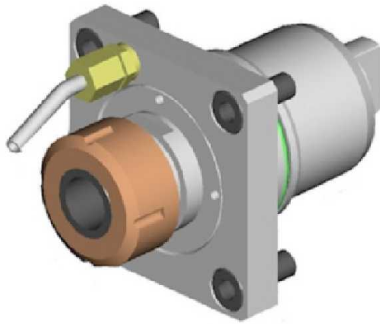
DRIVEN 35

MTSK-40 ER ADAPTORS	35
MTSK-40 MILL ADAPTORS	36

CYCLONE-52 TTM / CYCLONE-52 3TM / CYCLONE-70 TTM / CYCLONE-70 3TM / CYCLONE-78 MSY - CT1/CT2/CT3-52/65 YM/Y2M/Y2MS

DRIVEN

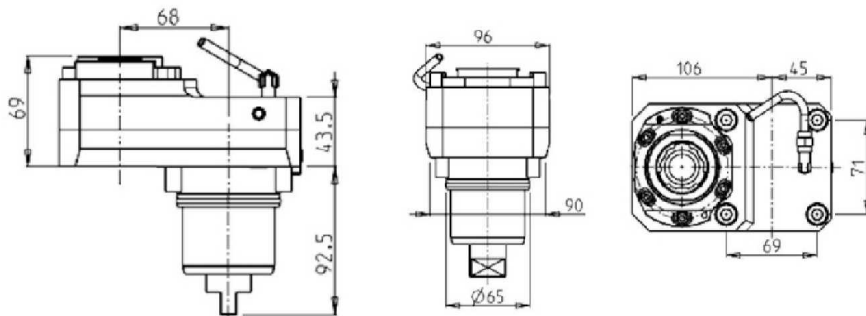
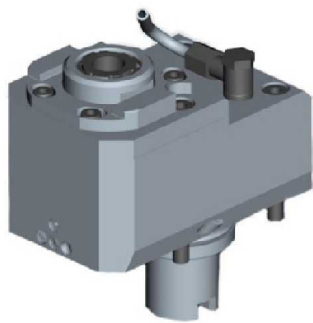
RADIAL DRIVEN TOOL



Part Number	Description	Spindle	I	RPM	Cool Thru	Ext Cool	A	A1	B	D	L
NKM0280125	Radial Driven Tool ER25	ER25	1:1	6000		X	48.66	15			
NKM0280225	Radial Driven Tool ERA25 Cool Thru*	ERA25	1:1	6000	X	X	59.03	35			
NKM0280132	Radial Driven Tool ER32	ER32	1:1	6000		X	56.16	15			
NKM0280332	Radial Driven Tool ER32 Cool Thru*	ER32	1:1	6000	X	X	71.66	35			
NKM0280232	Radial Driven Tool ERA32 Cool Thru*	ERA32	1:1	6000	X	X	67.53	35			
NKM0280140	Radial Driven Tool ER40	ER40	1:1	6000		X	65.16	15			
NKM0281919	Radial Driven Tool $\varnothing 3/4" \times 3/4"$	$3/4" \times 3/4"$	1:1	6000		X		25	15	$3/4"$	$3/4"$
NKM0282519	Radial Driven Tool $\varnothing 1" \times 19$	$1" \times 19$	1:1	6000		X		29	15	1"	19
NKM0281617	Radial Driven Tool $\varnothing 16 \times 17$	16×17	1:1	6000		X		25	15	16	17
NKM0282219	Radial Driven Tool $\varnothing 22 \times 19$	22×19	1:1	6000		X		27	15	22	19
NKM0282721	Radial Driven Tool $\varnothing 27 \times 21$	27×21	1:1	6000		X		28	15	27	21

*Coolant Thru tools are designed for 400 psi MAX.
They require 5 Micron Filtration and **CANNOT** be run dry.

RADIAL GEARED-DOWN 2:1 DRIVEN TOOL REDIRECTED IN Z BY 68mm

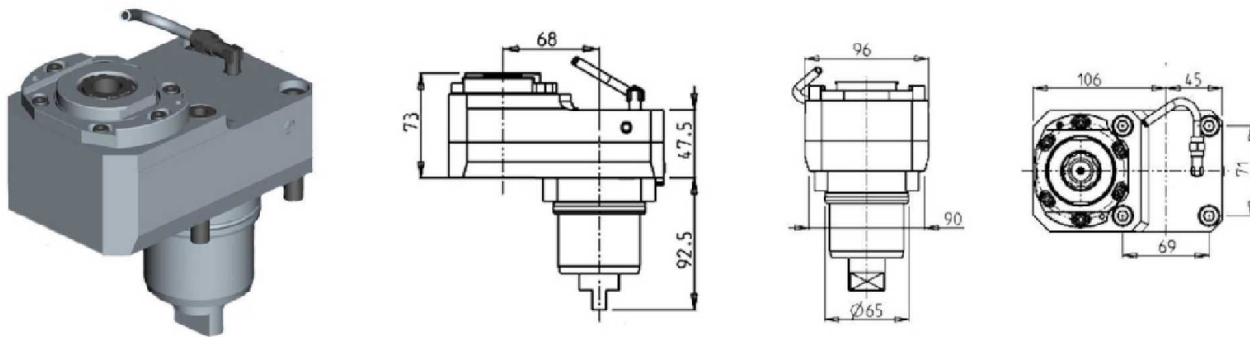


Part Number	Description	Spindle	I	RPM	Reversible	Ext Cool
NKM0752132	Radial Geared-Down 2:1 Redirected in Z ERA32	ERA32	2:1	3000	X	X

CYCLONE-52 TTM / CYCLONE-52 3TM / CYCLONE-70 TTM / CYCLONE-70 3TM / CYCLONE-78 MSY - CT1/CT2/CT3-52/65 YM/Y2M/Y2MS

DRIVEN

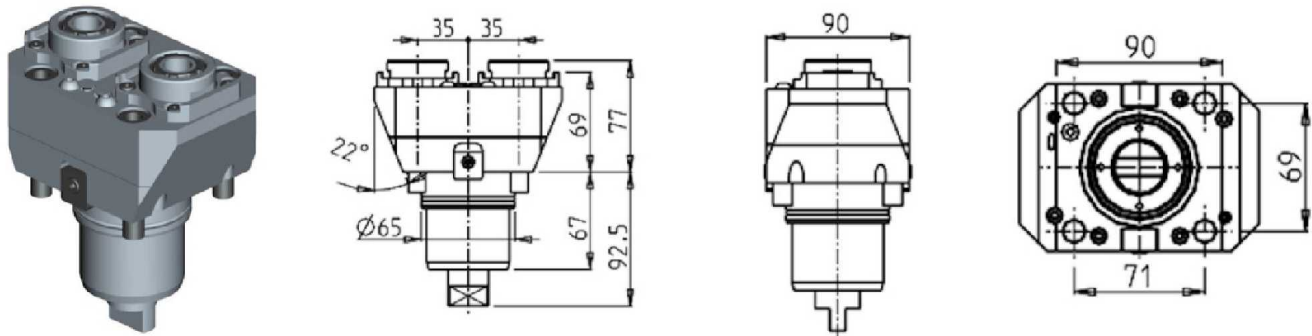
RADIAL GEARED-UP 1:2 DRIVEN TOOL REDIRECTED IN Z BY 68mm



Part Number	Description	Spindle	I	MAX RPM	Reversible	Cool Thru	Ext Cool
NKM0852132	Radial Geared-Up 1:2 Redirected in Z ERA25	ERA25	1:2	12000	X		X
NKM0854225	Radial Geared-Up 1:2 Redirected in Z ERA25 Cool Thru*	ERA25	1:2	12000	X	X	X

* Coolant Thru tools are designed for 1000 psi. They require 5 Micron Filtration and **CANNOT** be run dry.

RADIAL GEARED-UP 1:2 SINGLE SIDE TWIN HEAD DRIVEN TOOL IN Y

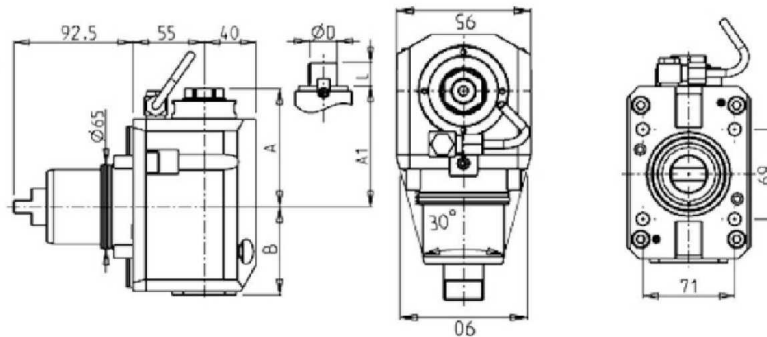
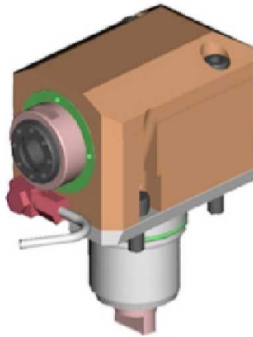


Part Number	Description	Spindle	I	RPM	Ext Cool
NKM1120325	Radial Geared-Up 1:2 Single Side Twin ERA25	ERA25	1:2	12000	X

CYCLONE-52 TTM / CYCLONE-52 3TM / CYCLONE-70 TTM / CYCLONE-70 3TM / CYCLONE-78 MSY - CT1/CT2/CT3-52/65 YM/Y2M/Y2MS

DRIVEN

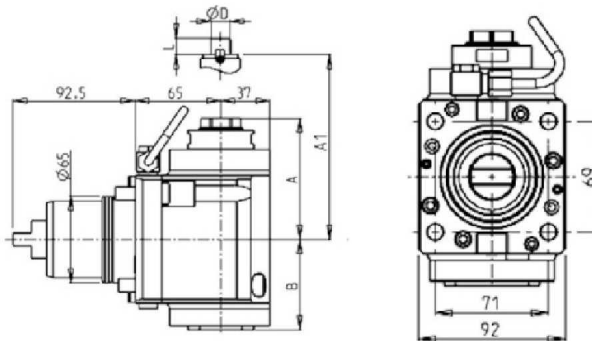
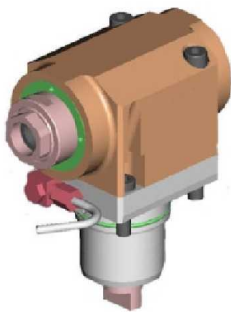
AXIAL DRIVEN TOOL H=55mm



Part Number	Description	Spindle	I	RPM	Reversible	Cool Thru	Ext Cool	A	A1	B	D	L
NKM0290125	Axial Driven Tool ERA25	ERA25	1:1	6000	X		X	91.03		68		
NKM0290225	Axial Driven Tool ERA25 Cool Thru*	ERA25	1:1	6000	X	X	X	91.03		79		
NKM0290132	Axial Driven Tool ERA32	ERA32	1:1	6000	X		X	94.53		68		
NKM0290232	Axial Driven Tool ERA32 Cool Thru*	ERA32	1:1	6000	X	X	X	94.53		91.5		
NKM0290140	Axial Driven Tool ER40	ER40	1:1	6000	X		X	108.16		68		
NKM0290240	Axial Driven Tool ER40 Cool Thru*	ER40	1:1	6000	X	X	X	108.16		79		
NKM0292219	Axial Driven Tool Ø22x19	22x19	1:1	6000	X		X		80	68	22	19

* Coolant Thru tools are designed for 1000 psi.
They require 5 Micron Filtration and **CANNOT** be run dry.

AXIAL DRIVEN TOOL H=65mm



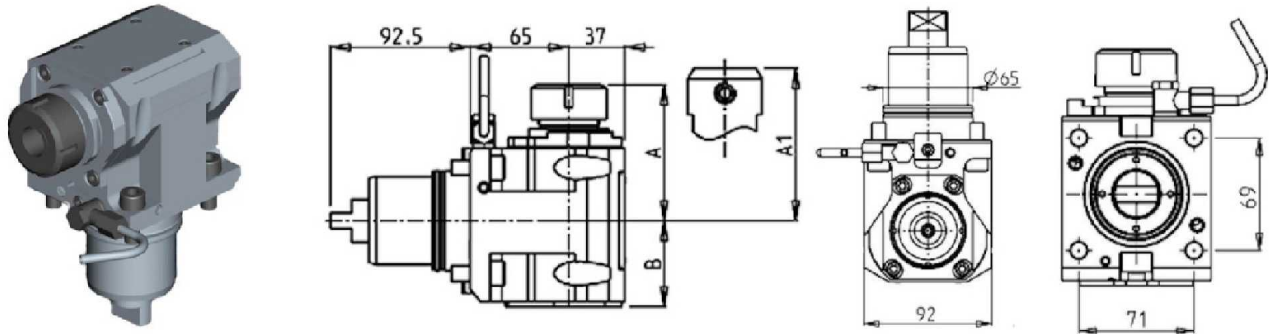
Part Number	Description	Spindle	I	RPM	Reversible	Cool Thru	Ext Cool	A	A1	B
NKM0610125	Axial Driven Tool ERA25	ERA25	1:1	6000	X		X	91.03		68
NKM0610225	Axial Driven Tool ERA25 Cool Thru*	ERA25	1:1	6000	X	X	X	91.03		79
NKM0610132	Axial Driven Tool ERA32	ERA32	1:1	6000	X		X	94.53		68
NKM0610232	Axial Driven Tool ERA32 Cool Thru*	ERA32	1:1	6000	X	X	X	94.53		91.5
NKM0610140	Axial Driven Tool ER40	ER40	1:1	6000	X		X	108.16		68
NKM0610240	Axial Driven Tool ER40 Cool Thru*	ER40	1:1	6000	X	X	X	108.16		79
NKM0612219	Axial Driven Tool Ø22x19	22x19	1:1	6000	X		X		80	68

* Coolant Thru tools are designed for 1000 psi.
They require 5 Micron Filtration and **CANNOT** be run dry.

CYCLONE-52 TTM / CYCLONE-52 3TM / CYCLONE-70 TTM / CYCLONE-70 3TM / CYCLONE-78 MSY - CT1/CT2/CT3-52/65 YM/Y2M/Y2MS

DRIVEN

AXIAL DRIVEN TOOL H=65mm

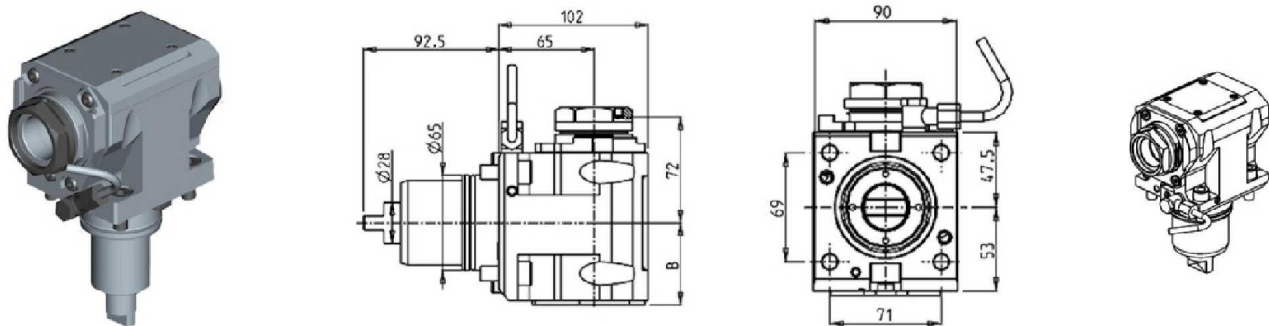


Part Number	Description	Spindle	I	RPM	Reversible	Cool Thru	Ext Cool	A	A1	B
NKM0740132	Axial Driven Tool ER32	ER32	1:1	6000	X		X	88.66		56
NKM0740232	Axial Driven Tool ER32 Cool Thru*	ER32	1:1	6000	X	X	X	88.66		67
NKM0740140	Axial Driven Tool ER40	ER40	1:1	6000	X		X	99.16		56
NKM0740240	Axial Driven Tool ER40 Cool Thru*	ER40	1:1	6000	X	X	X	99.16		67
NKM0740716	Axial Driven Tool Weldon 16	Weldon 16	1:1	6000	X		X		91.5	56
NKM0740816	Axial Driven Tool Weldon 16 Cool Thru*	Weldon 16	1:1	6000	X	X	X		91.5	67

* Coolant Thru tools are designed for 1000 psi.
They require 5 Micron Filtration and **CANNOT** be run dry.

QUICK CHANGE AXIAL MTSK DRIVEN TOOL H=65mm

See Accessories for MTSK Quick Change Tool Holder Clamps



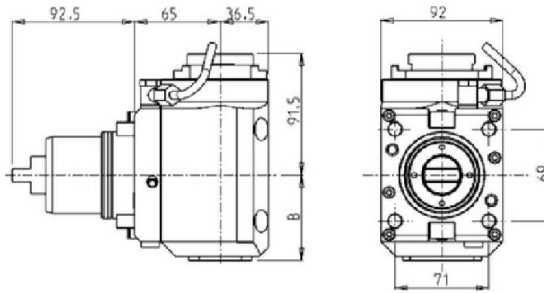
Part Number	Description	Spindle	I	RPM	Reversible	Cool Thru	Ext Cool	B
NKM1440140	Axial MTSK-40 Driven Tool	MTSK-40	1:1	6000	X		X	56
NKM1440240	Axial MTSK-40 Driven Tool Cool Thru*	MTSK-40	1:1	6000	X	X	X	67

* Coolant Thru tools are designed for 1000 psi.
They require 5 Micron Filtration and **CANNOT** be run dry.

CYCLONE-52 TTM / CYCLONE-52 3TM / CYCLONE-70 TTM / CYCLONE-70 3TM / CYCLONE-78 MSY - CT1/CT2/CT3-52/65 YM/Y2M/Y2MS

DRIVEN

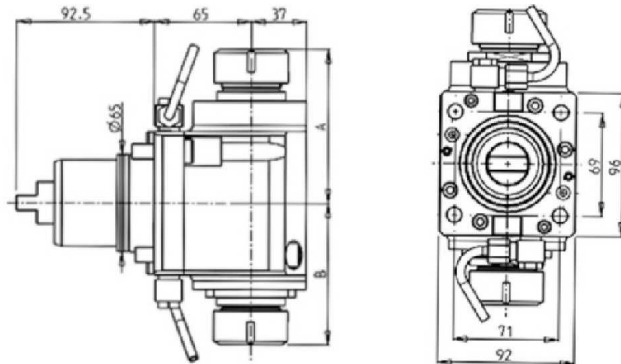
AXIAL GEARED-UP 1:2 DRIVEN TOOL



Part Number	Description	Spindle	I	RPM	Reversible	Cool Thru	Ext Cool	B
NKM0860325	Axial Geared-Up 1:2 ERA25	ERA25	1:2	12000	X		X	64
NKM0860425	Axial Geared-Up 1:2 ERA25 Cool Thru*	ERA25	1:2	12000	X	X	X	74

* Coolant Thru tools are designed for 1000 psi. They require 5 Micron Filtration and **CANNOT** be run dry.

AXIAL OPPOSITE FACE TWIN DRIVEN TOOL H=65mm

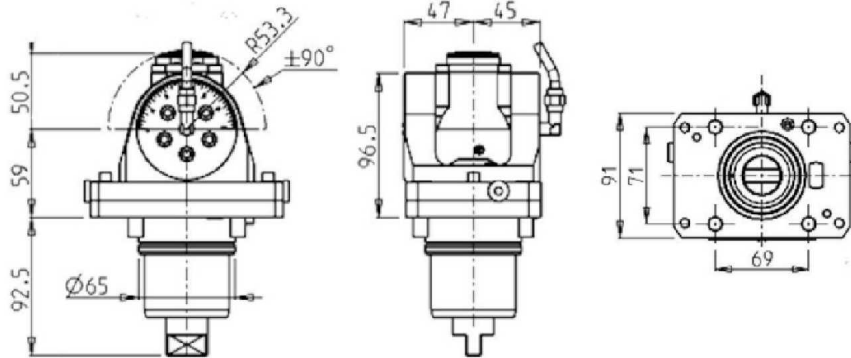
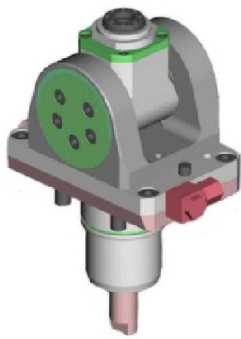


Part Number	Description	Spindle	I	RPM	Reversible	Ext Cool	A	B
NKM0600232	Axial Opposite Face ER32+ER32	ER32+ER32	1:1	6000	X	X	102.66	94.26
NKM0600240	Axial Opposite Face ER40+ER40	ER40+ER40	1:1	6000	X	X	106.16	107.16

CYCLONE-52 TTM / CYCLONE-52 3TM / CYCLONE-70 TTM / CYCLONE-70 3TM / CYCLONE-78 MSY - CT1/CT2/CT3-52/65 YM/Y2M/Y2MS

DRIVEN

0-180° ADJUSTABLE ANGLE DRIVEN TOOL



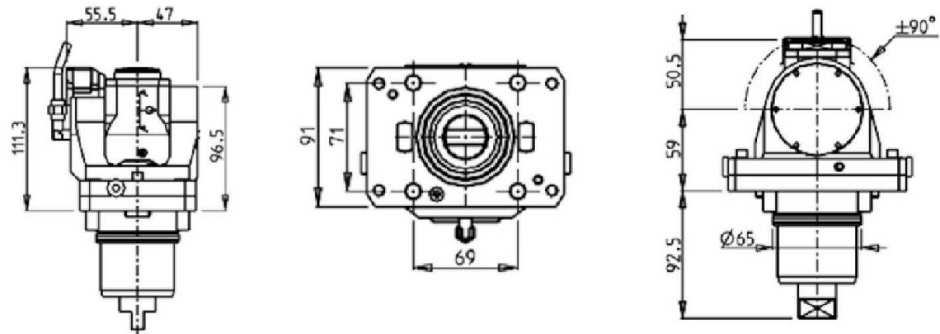
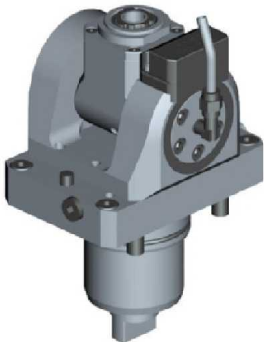
Part Number	Description	Spindle	I	RPM	Reversible	Cool Thru	Ext Cool
NKM0810120	0-180° Adj. Angle ERA20	ERA20	1:1	6000	X		X
NKM0810220	0-180° Adj. Angle ERA20 Cool Thru*	ERA20	1:1	6000	X	X	X

* Coolant Thru tools are designed for 1000 psi. They require 5 Micron Filtration and **CANNOT** be run dry.

Note :

Wrenches are provided with the purchase of Specialty Toolholders

0-180° ADJUSTABLE ANGLE DRIVEN TOOL WITH DIGITAL DISPLAY



Part Number	Description	Spindle	I	RPM	Reversible	Cool Thru	Ext Cool
NKM0815120	0-180° Adj. Angle ERA20 with Digital Display	ERA20	1:1	6000	X		X
NKM0815220	0-180° Adj. Angle ERA20 with Digital Display Cool Thru*	ERA20	1:1	6000	X	X	X

* Coolant Thru tools are designed for 1000 psi. They require 5 Micron Filtration and **CANNOT** be run dry.

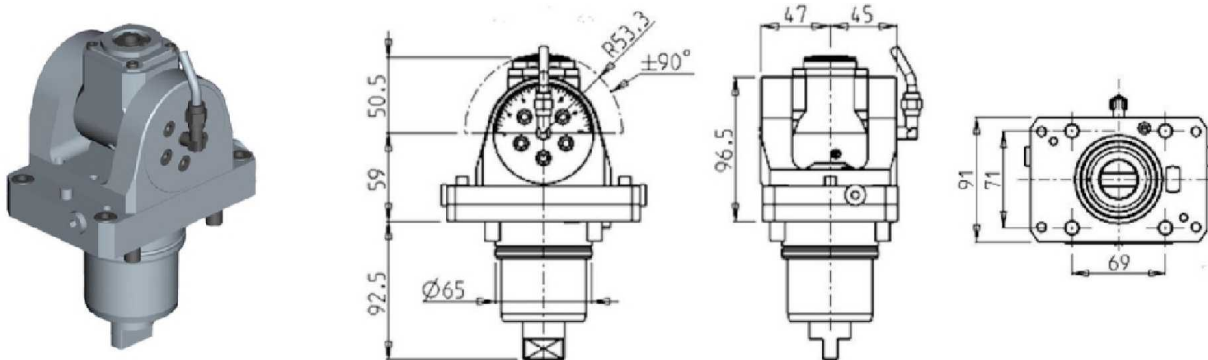
Note :

Wrenches are provided with the purchase of Specialty Toolholders

CYCLONE-52 TTM / CYCLONE-52 3TM / CYCLONE-70 TTM / CYCLONE-70 3TM / CYCLONE-78 MSY - CT1/CT2/CT3-52/65 YM/Y2M/Y2MS

DRIVEN

0-180° ADJUSTABLE ANGLE DRIVEN TOOL GEARED-UP 1:2



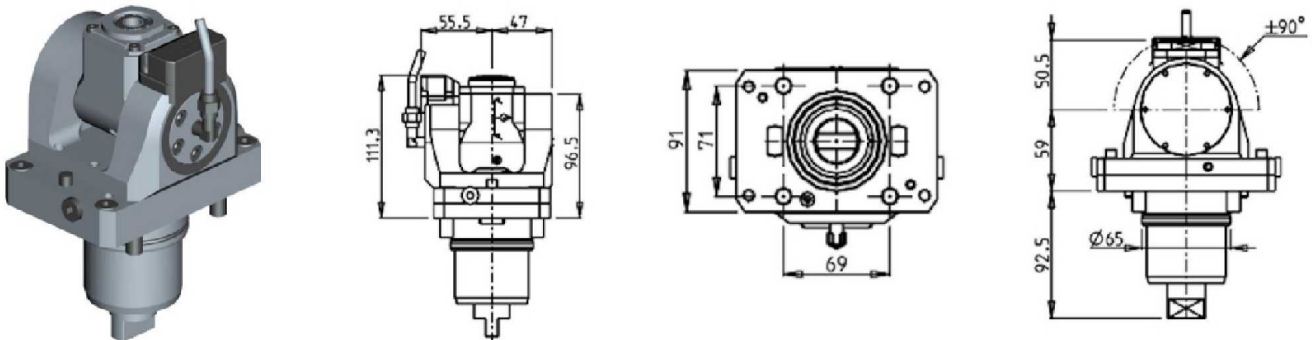
Part Number	Description	Spindle	I	RPM	Reversible	Cool Thru	Ext Cool
NKM0810316	0-180° Adj. Angle Geared-Up 1:2 ERA16	ERA16	1:2	12000	X		X
NKM0810416	0-180° Adj. Angle Geared-Up 1:2 ERA16 Cool Thru*	ERA16	1:2	12000	X	X	X

* Coolant Thru tools are designed for 1000 psi.
They require 5 Micron Filtration and **CANNOT** be run dry.

Note :

Wrenches are provided with the purchase of Specialty Toolholders

0-180° ADJUSTABLE ANGLE DRIVEN TOOL GEARED-UP 1:2 WITH DIGITAL DISPLAY



Part Number	Description	Spindle	I	RPM	Reversible	Cool Thru	Ext Cool
NKM0815316	0-180° Adj. Angle Geared-Up 1:2 ERA16 with Digital Display	ERA16	1:2	12000	X		X
NKM0815416	0-180° Adj. Angle Geared-Up 1:2 ERA16 with Digital Display Cool Thru*	ERA16	1:2	12000	X	X	X

* Coolant Thru tools are designed for 1000 psi.
They require 5 Micron Filtration and **CANNOT** be run dry.

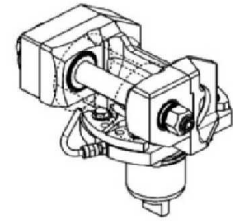
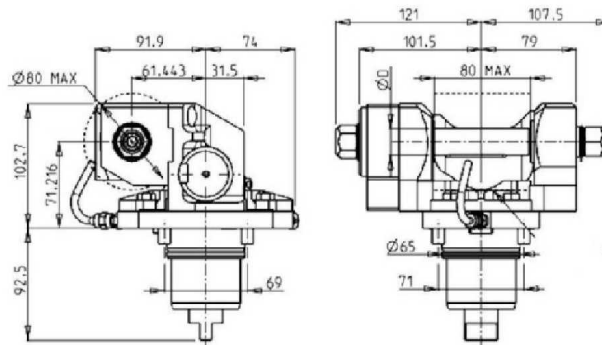
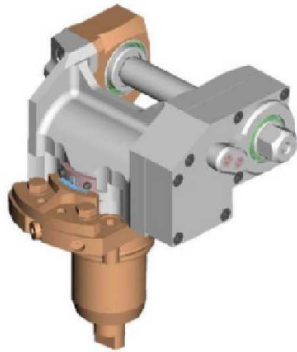
Note :

Wrenches are provided with the purchase of Specialty Toolholders

CYCLONE-52 TTM / CYCLONE-52 3TM / CYCLONE-70 TTM / CYCLONE-70 3TM / CYCLONE-78 MSY - CT1/CT2/CT3-52/65 YM/Y2M/Y2MS

DRIVEN

DRIVEN GEAR HOBBER

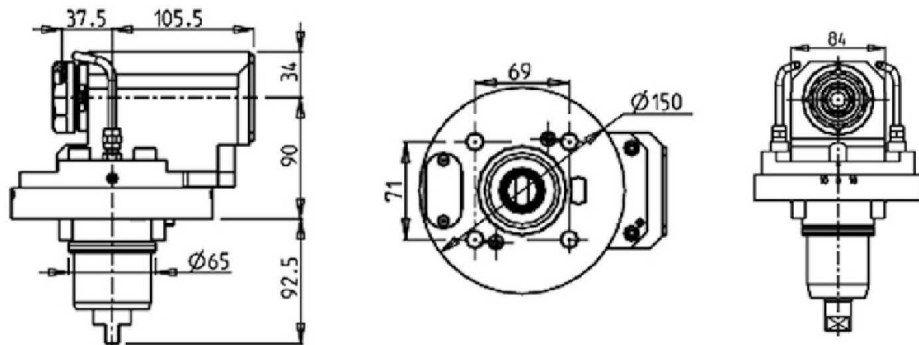


Part Number	Description	I	MAX RPM	Reversible	Ext Cool	D (Inch)	D (mm)
NKM0331100	Driven Gear Hobb 1:1	1:1	6000	X	X	3/4"-1"-1 1/4"	16-22-27-32
NKM0332100	Driven Gear Hobb Geared-Down 2:1	2:1	3000	X	X	3/4"-1"-1 1/4"	16-22-27-32

Note : Wrenches are provided with the purchase of Specialty Toolholders

QUICK CHANGE AXIAL MTSK DRIVEN TOOL FOR POWER SKIVING H=90mm

See Accessories for MTSK Quick Change Tool Holder Clamps



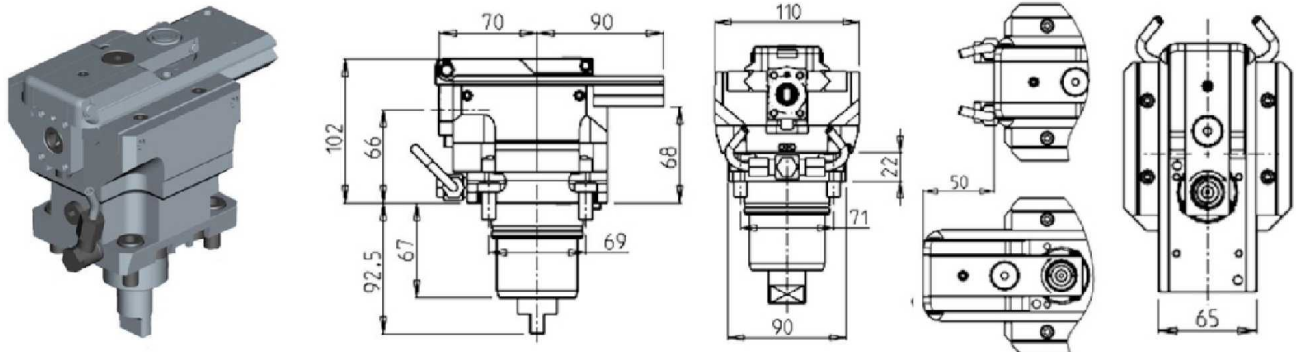
Part Number	Description	Spindle	I	RPM	Reversible	Ext Cool
NKM1170100	Axial MTSK-40 for Power Skiving	MTSK-40	1:1	6000	X	X

Note : Wrenches are provided with the purchase of Specialty Toolholders

CYCLONE-52 TTM / CYCLONE-52 3TM / CYCLONE-70 TTM / CYCLONE-70 3TM / CYCLONE-78 MSY - CT1/CT2/CT3-52/65 YM/Y2M/Y2MS

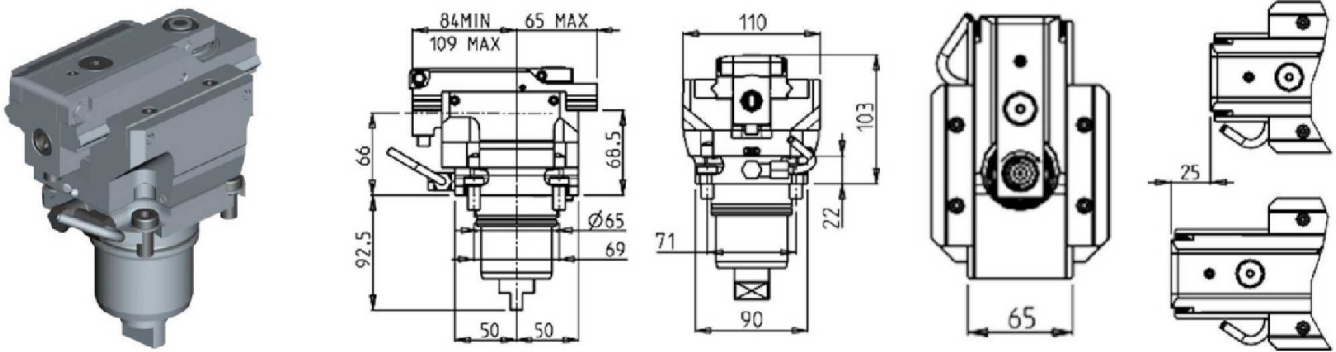
DRIVEN

BROACHING/SLOTING DRIVEN TOOL 50mm STROKE



Part Number	Description	I	MAX RPM	Reversible	Ext Cool
NKM0940100	Broaching/Slotting Driven Tool 50mm Stroke	4:1	2000	X	X

BROACHING/SLOTING DRIVEN TOOL 25mm STROKE

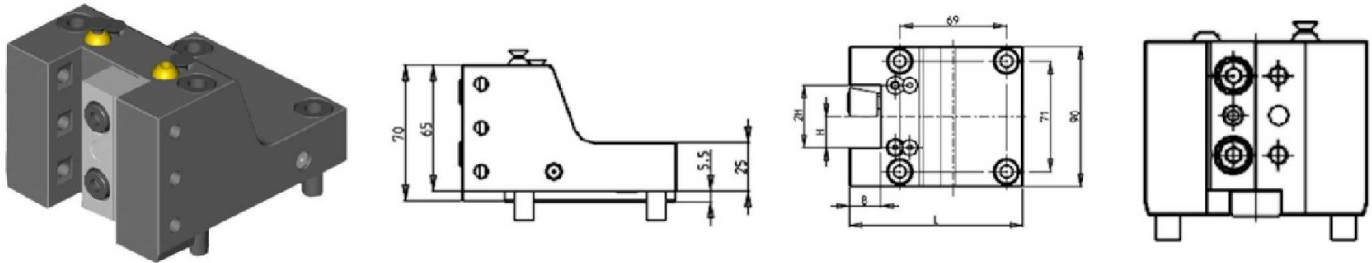


Part Number	Description	I	MAX RPM	Reversible	Ext Cool
NKM0940200	Broaching/Slotting Driven Tool 25mm Stroke	4:1	2400	X	X

CYCLONE-52 TTM / CYCLONE-52 3TM / CYCLONE-70 TTM / CYCLONE-70 3TM / CYCLONE-78 MSY - CT1/CT2/CT3-52/65 YM/Y2M/Y2MS

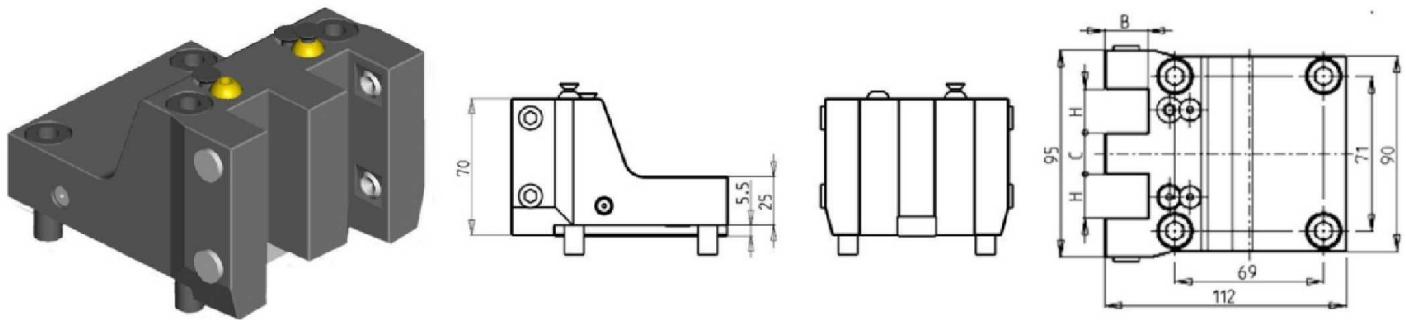
STATIC

RADIAL SINGLE STATIC TOOL



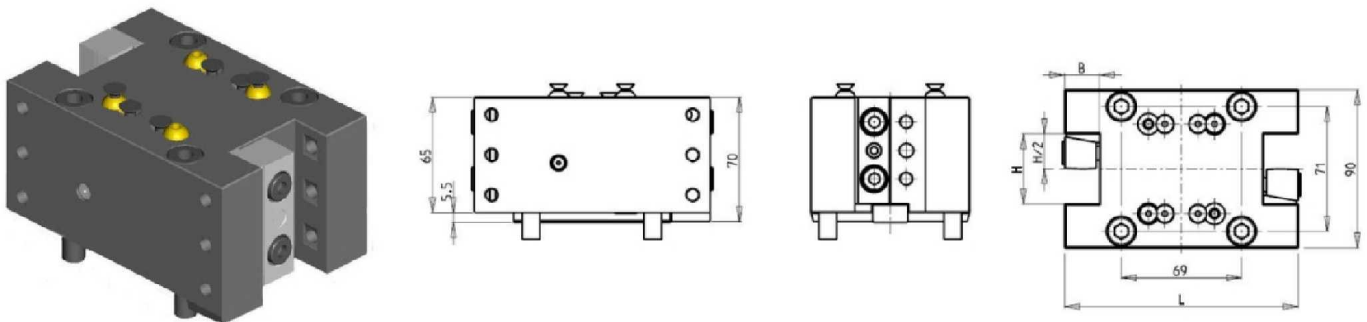
Part Number	Description	# of Tools	Reversible	L	B	H
NKM0412000	Radial Single Static Tool 20mm	1	X	112	20	20
NKM0412500	Radial Single Static Tool 25mm	1	X	117	25	25

RADIAL SINGLE SIDE TWIN STATIC TOOL



Part Number	Description	# of Tools	Reversible	Dimensions	B	H	C
NKM0361905	Radial Single Side Twin Static Tool 3/4"	2	X	Inch	3/4"	3/4"	19 (mm)
NKM0362000	Radial Single Side Twin Static Tool 20mm	2	X	mm	20	20	19

RADIAL DOUBLE STATIC TOOL

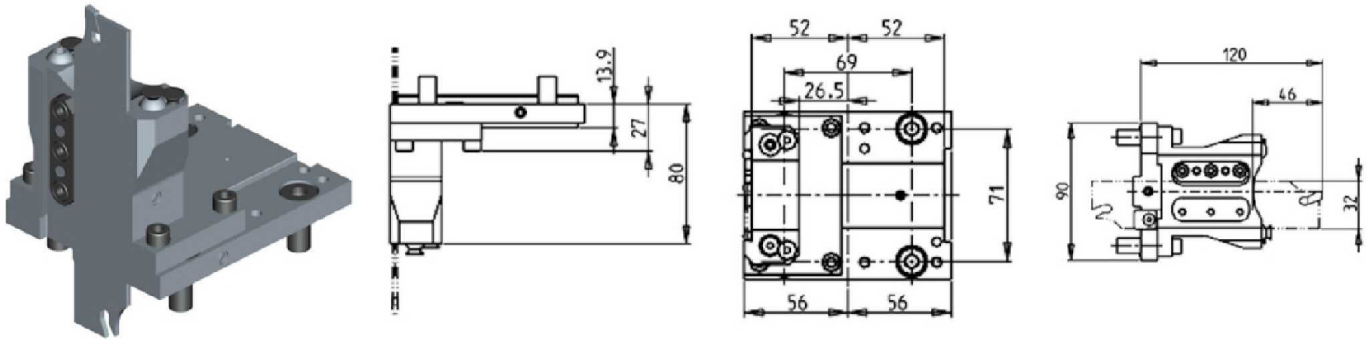


Part Number	Description	# of Tools	Reversible	L	B	H
NKM0422000	Radial Double Static Tool 20mm	2	X	134	20	20
NKM0422500	Radial Double Static Tool 25mm	2	X	144	25	25

CYCLONE-52 TTM / CYCLONE-52 3TM / CYCLONE-70 TTM / CYCLONE-70 3TM / CYCLONE-78 MSY - CT1/CT2/CT3-52/65 YM/Y2M/Y2MS

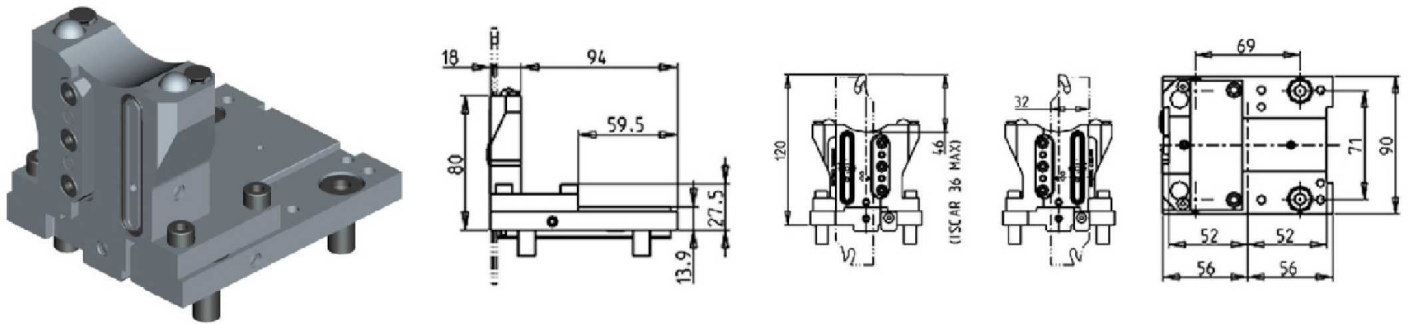
STATIC

RADIAL BLADE HOLDER WITH BLADE KIT



Part Number	Description	# of Tools	Reversible	Ext Cool
NKM1150132	Radial Blade Holder with Blade Kit	1	X	X
BLADEKIT	Blade Kit: 1 Blade, 10 Inserts			

RADIAL BLADE HOLDER WITH INTERNAL COOLANT - BLADE KIT NOT INCLUDED

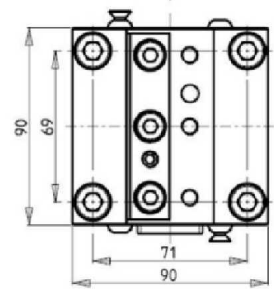
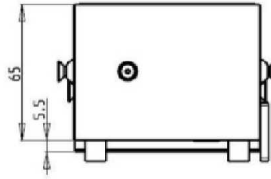
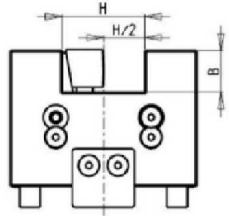
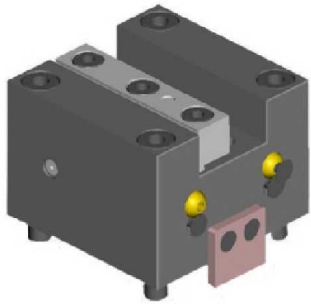


Part Number	Description	# of Tools	Reversible	Ext Cool	Cool Thru
NKM1160132R	Radial Blade Holder Cool Thru (Right Hand)	1	X	X	X
NKM1160132L	Radial Blade Holder Cool Thru (Left Hand)	1	X	X	X
COOL THRU BLADEKIT	Blade Kit: 1 Blade, 10 Inserts				

CYCLONE-52 TTM / CYCLONE-52 3TM / CYCLONE-70 TTM / CYCLONE-70 3TM / CYCLONE-78 MSY - CT1/CT2/CT3-52/65 YM/Y2M/Y2MS

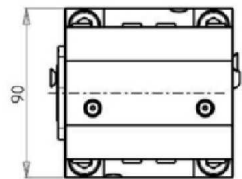
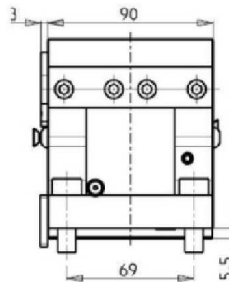
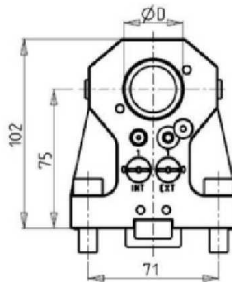
STATIC

AXIAL SINGLE STATIC TOOL



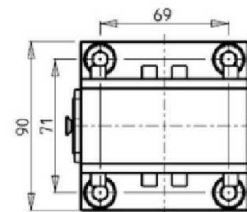
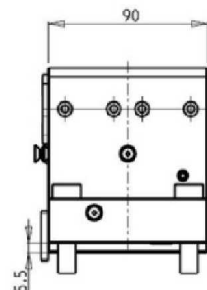
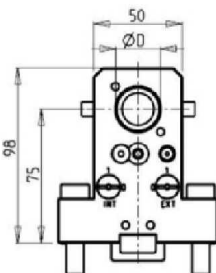
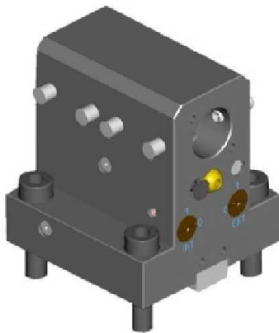
Part Number	Description	# of Tools	Reversible	Dimensions	B	H
NKM0432000	Axial Single Static Tool 20mm	1	X	mm	20	20
NKM0432500	Axial Single Static Tool 25mm	1	X	mm	25	25

AXIAL SINGLE BORING BAR HOLDER H=75mm



Part Number	Description	# of Tools	Reversible	Cool Thru	Ext Cool	D
NKM0303200	Axial Single BBH: 32mm	1	X	X	X	32
NKM0304000	Axial Single BBH: 40mm	1	X	X	X	40
KIT 1000001	Plug for 32mm or 1 1/4" BBH to Make Cool Thru					
KIT 1000018	Plug for 40mm BBH to Make Cool Thru					

AXIAL SINGLE BORING BAR HOLDER H=75mm

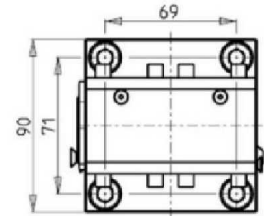
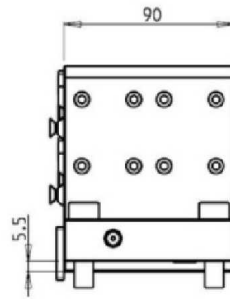
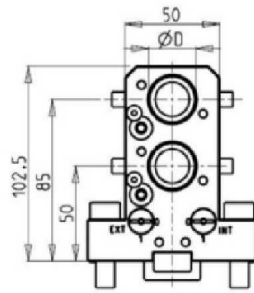
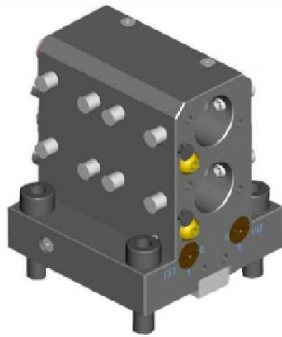


Part Number	Description	# of Tools	Reversible	Cool Thru	Ext Cool	Dimensions	D
NKM0302540	Axial Single BBH: 1"	1	X	X	X	Inch	1"
NKM0302500	Axial Single BBH: 25mm	1	X	X	X	mm	25
KIT 1000006	Plug for 25mm or 1" BBH to Make Cool Thru						

CYCLONE-52 TTM / CYCLONE-52 3TM / CYCLONE-70 TTM / CYCLONE-70 3TM / CYCLONE-78 MSY - CT1/CT2/CT3-52/65 YM/Y2M/Y2MS

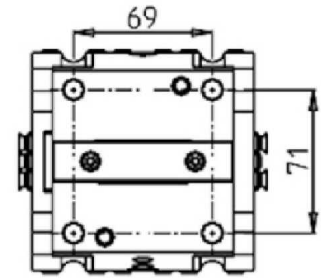
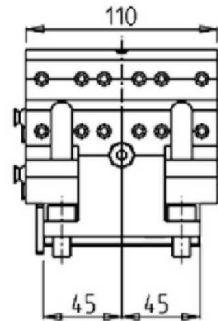
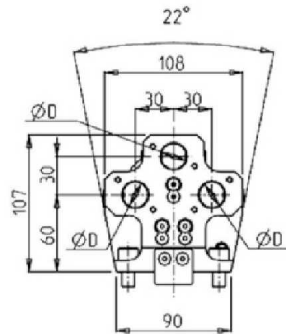
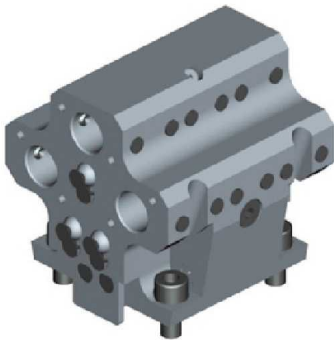
STATIC

AXIAL DOUBLE BORING BAR HOLDER



Part Number	Description	# of Tools	Reversible	Cool Thru	Ext Cool	Dimensions	D
NKM0442540	Axial Double BBH: 1"	2	X	X	X	Inch	1"
NKM0442500	Axial Double BBH: 25mm	2	X	X	X	mm	25
KIT 1000006	Plug for 25mm or 1" BBH to Make Cool Thru						

AXIAL 3+3 POSITION BORING BAR HOLDER

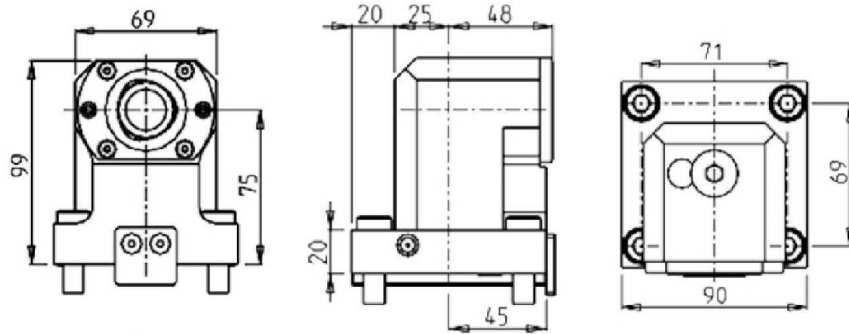
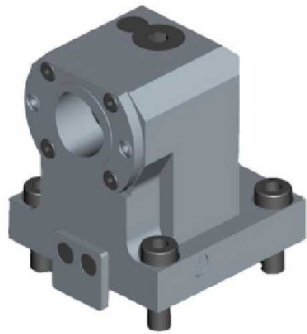


Part Number	Description	# of Tools	Reversible	Cool Thru	Ext Cool	Dimensions	D
NKM1132000	Axial 3+3 Position BBH: 20mm	3+3	X	X	X	mm	20
KIT 1000005	Plug for 20mm or 3/4" BBH to Make Cool Thru						

CYCLONE-52 TTM / CYCLONE-52 3TM / CYCLONE-70 TTM / CYCLONE-70 3TM / CYCLONE-78 MSY - CT1/CT2/CT3-52/65 YM/Y2M/Y2MS

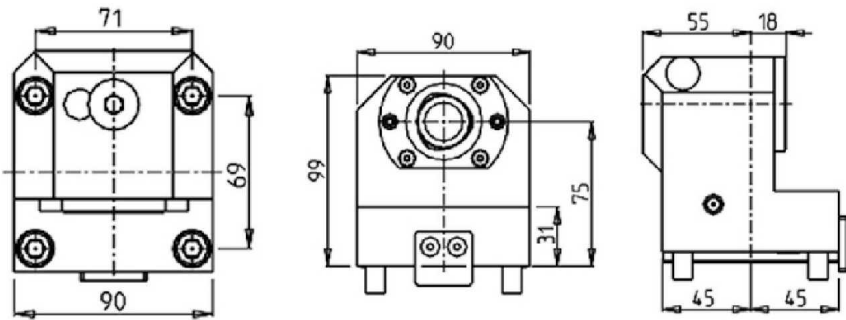
STATIC

AXIAL SINGLE STATIC TOOL CAPTO C4



Part Number	Description	# of Tools	Cool Thru	Reversible	Size
NKM0874010	Axial Single Static Tool Capto C4 Right Version	1	X	X	C4
NKM0874010LC	Axial Single Static Tool Capto C4 Left Version	1	X	X	C4

AXIAL REAR-SET BORING SINGLE STATIC TOOL CAPTO C4

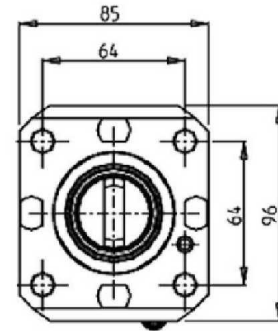
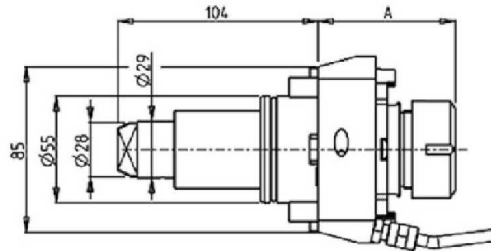
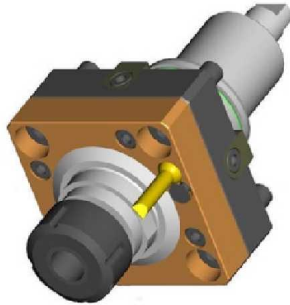


Part Number	Description	# of Tools	Cool Thru	Reversible	Size
NKM1064010	Axial Rear-Set Boring Static Capto C4 Right Version	1	X	X	C4
NKM1064010LC	Axial Rear-Set Boring Static Capto C4 Left Version	1	X	X	C4

WTS-52/65 Y2M 16ST. - ML-250

DRIVEN

RADIAL DRIVEN TOOL

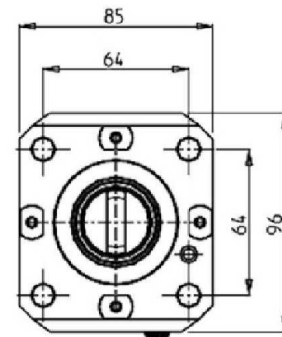
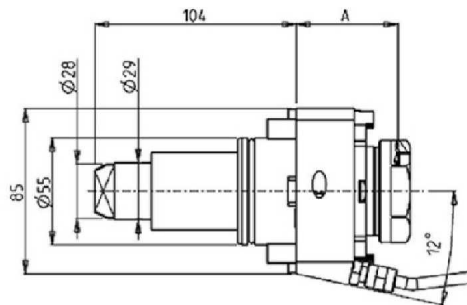
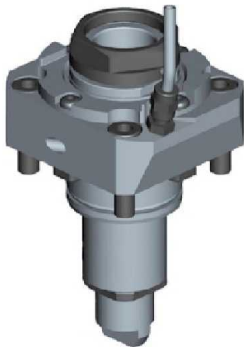


Part Number	Description	Spindle	I	RPM	Cool Thru	Ext. Cool	A
DWO 0901325	Radial ERA25	ERA25	1:1	6000		X	42.5
DWO 3490425	Radial ERA25 Cool Thru*	ERA25	1:1	6000	X	X	54.5
DWO 0901332	Radial ERA32	ERA32	1:1	6000		X	54.5
DWO 3490432	Radial ERA32 Cool Thru*	ERA32	1:1	6000	X	X	63
DWO 0901132	Radial ER32	ER32	1:1	6000		X	71.2
DWO 3490232	Radial ER32 Cool Thru*	ER32	1:1	6000	X	X	79.2

* Coolant Thru tools are designed for 1000 psi.
They require 5 Micron Filtration and **CANNOT** be run dry.

QUICK CHANGE RADIAL MTSK-40 DRIVEN TOOL

See Accessories for MTSK Quick Change Tool Holder Clamps



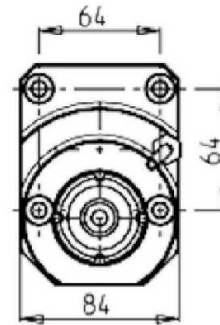
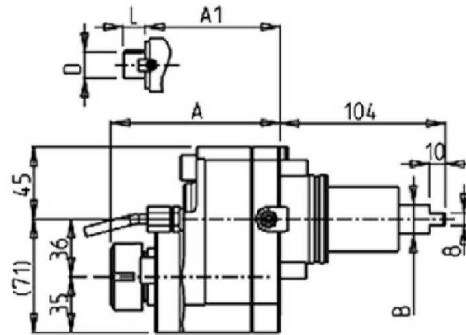
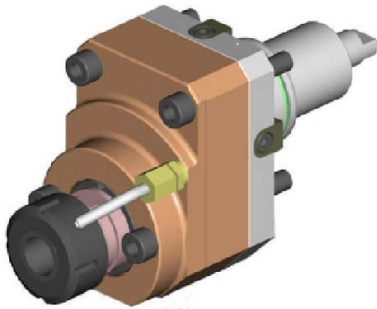
Part Number	Description	Spindle	I	RPM	Cool Thru	Ext Cool	A
DWO 0801140	Radial MTSK-40 Driven Tool	MTSK-40	1:1	6000		X	52.5
DWO 3640240	Radial MTSK-40 Driven Tool Cool Thru	MTSK-40	1:1	6000	X	X	60.5

* Coolant Thru tools are designed for 1000 psi.
They require 5 Micron Filtration and **CANNOT** be run dry.

WTS-52/65 Y2M 16ST. - ML-250

DRIVEN

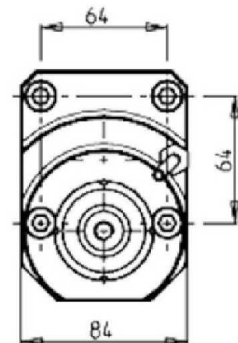
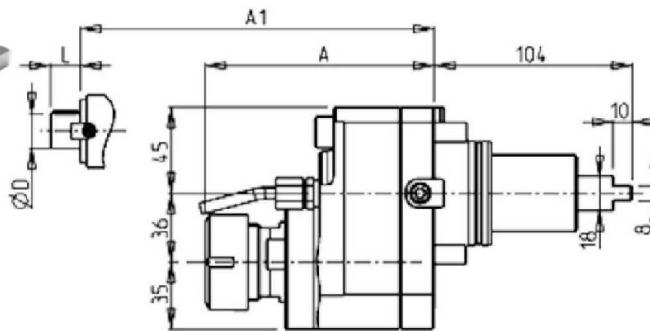
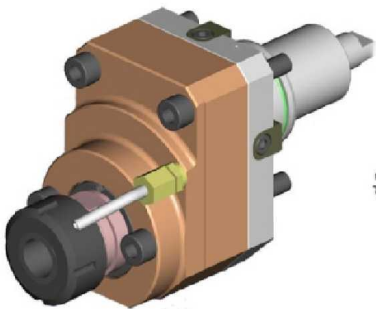
RADIAL DRIVEN TOOL RE-DIRECTED IN Z BY 36mm



Part Number	Description	Spindle	I	RPM	Reversible	Cool Thru	Ext. Cool	A	B	A1	D	L
DWO 2710420	Radial Redirected ERA20 Cool Thru	ERA20	1:1	6000	X	X	X	94.5	29			
0720025	Radial Redirected ER25	ER25	1:1	6000	X		X	106.86	20			
0720032	Radial Redirected ER32	ER32	1:1	6000	X		X	120.56	20			
0720016	Radial Redirected Mill Head 16x17mm	16x17	1:1	6000	X		X		20	88.5	16	17
0720022	Radial Redirected Mill Head 22x19mm	22x19	1:1	6000	X		X		20	90.5	22	19
0720027	Radial Redirected Mill Head 27x21mm	27x21	1:1	6000	X		X		20	92.5	27	21

* Coolant Thru tools are designed for 1000 psi.
They require 5 Micron Filtration and **CANNOT** be run dry.

RADIAL GEARED-DOWN 2:1 DRIVEN TOOL RE-DIRECTED IN Z BY 36mm

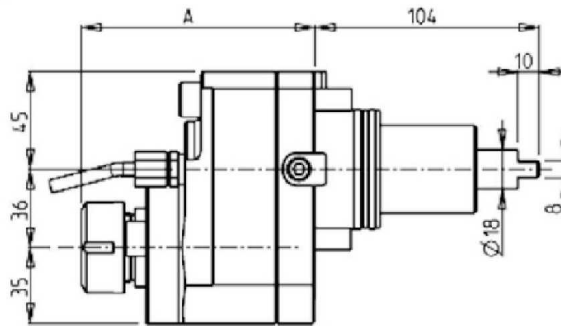
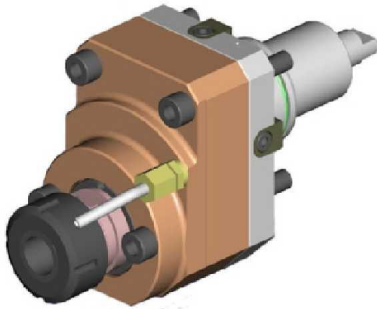


Part Number	Description	Reversible	Spindle	I	RPM	Ext. Cool	A	A1	D	L
0722132	Radial Geared-Down 2:1 Redirected ER32	X	ER32	2:1	3000	X	120.56			
0722116	Radial Geared-Down Redirected Mill Head	X	16x17	2:1	3000	X		88.5	16	17
0722122	Radial Geared-Down Redirected Mill Head	X	22x19	2:1	3000	X		90.5	22	19
0722127	Radial Geared-Down Redirected Mill Head	X	27x21	2:1	3000	X		92.5	27	21

WTS-52/65 Y2M 16ST. - ML-250

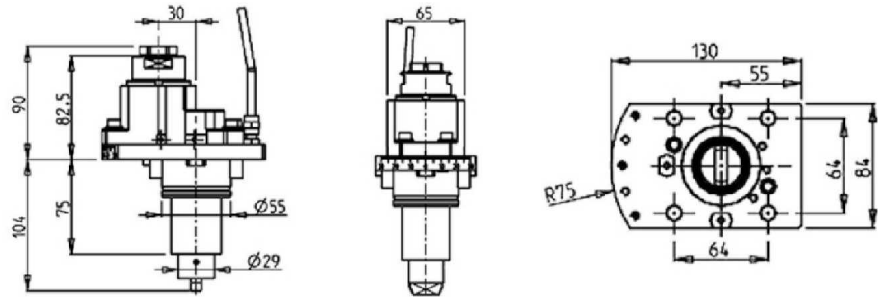
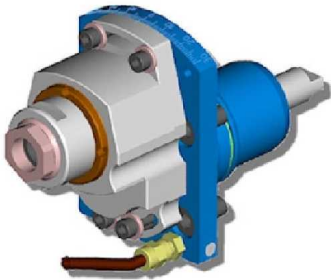
DRIVEN

RADIAL GEARED-UP 1:2 DRIVEN TOOL RE-DIRECTED IN Z BY 36mm



Part Number	Description	Reversible	Spindle	I	RPM	Ext. Cool	A
0721225	Radial Geared-Up 1:2 Redirected ER25	X	ER25	1:2	12000	X	108.56

RADIAL ±30° ADJUSTABLE ANGLE DRIVEN TOOL REDIRECTED BY 30mm

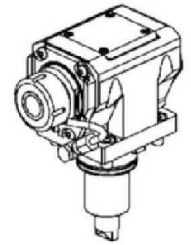
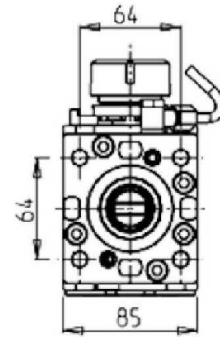
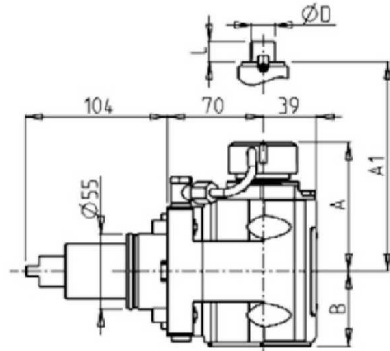
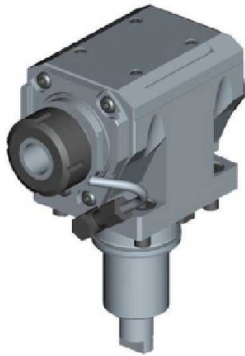


Part Number	Description	Spindle	I	RPM	Ext Cool
DWO 3530325	Radial ±30° Adj. Angle ERA25	ERA25	1:1	6000	X

WTS-52/65 Y2M 16ST. - ML-250

DRIVEN

AXIAL DRIVEN TOOL H=70mm



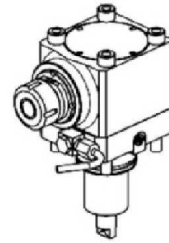
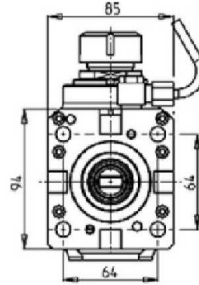
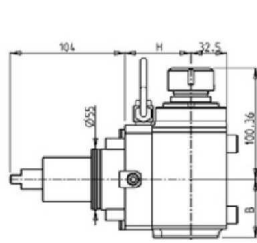
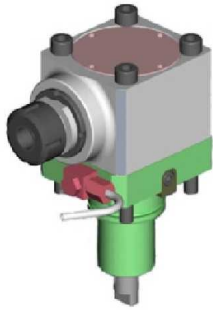
Part Number	Description	Spindle	Reversible	I	RPM	Cool Thru	Ext. Cool	A	A1	B	D	L
DWO 0880125	Axial ER25 H=70mm	ER25	X	1:1	6000		X	91.16		54.5		
DWO 0880225	Axial ER25 H=70mm Cool Thru*	ER25	X	1:1	6000	X	X	91.16		65.5		
DWO 0880325	Axial ERA25 H=70mm	ERA25	X	1:1	6000		X	65		54.5		
DWO 0880425	Axial ERA25 H=70mm Cool Thru*	ERA25	X	1:1	6000	X	X	65		54.5		
DWO 0880132	Axial ER32 H=70mm	ER32	X	1:1	6000		X	93.66		54.5		
DWO 0880232	Axial ER32 H=70mm Cool Thru*	ER32	X	1:1	6000	X	X	93.66		65.5		
DWO 0880140	Axial ER40 H=70mm	ER40	X	1:1	6000		X	98.16		54.5		
DWO 0880240	Axial ER40 H=70mm Cool Thru*	ER40	X	1:1	6000	X	X	98.16		65.5		
DWO 0880516	Axial Mill Head H=70mm	16x17	X	1:1	6000		X		67.5	54.5	16	17
DWO 0880522	Axial Mill Head H=70mm	22x19	X	1:1	6000		X		67.5	54.5	22	19
DWO 0880527	Axial Mill Head H=70mm	27x21	X	1:1	6000		X		70	54.5	27	21

* Coolant Thru tools are designed for 1000 psi.
They require 5 Micron Filtration and **CANNOT** be run dry.

WTS-52/65 Y2M 16ST. - ML-250

DRIVEN

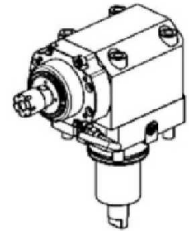
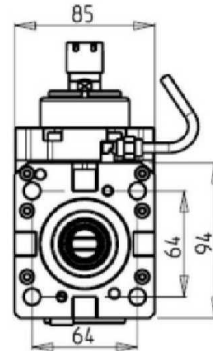
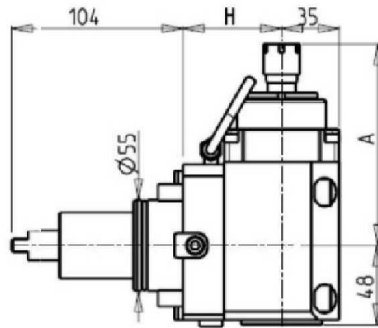
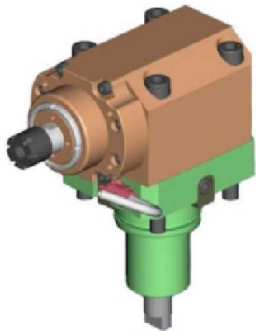
AXIAL GEARED-UP 1:2 DRIVEN TOOL H=70mm



Part Number	Description	Spindle	Reversible	I	RPM	Cool Thru	Ext. Cool	H	B
0893625	Axial Geared-Up 1:2 ER25 H=70mm	ER25	X	1:2	12000		X	70	55.5
0893725	Axial Geared-Up 1:2 ER25 H=70mm Cool Thru*	ER25	X	1:2	12000	X	X	70	66.5

* Coolant Thru tools are designed for 1000 psi.
They require 5 Micron Filtration and **CANNOT** be run dry.

AXIAL GEARED-UP 1:5.625 DRIVEN TOOL H=70mm



Part Number	Description	Reversible	Spindle	I	RPM	Cool Thru	Ext. Cool	A	H
DWO 0190316	Axial Geared-Up H=70mm	X	ER16	1:5.625	22500		X	121.8	70
DWO 0190311	Axial Geared-Up Cool Thru* H=70mm	X	ER11	1:5.625	22500	X		134	70

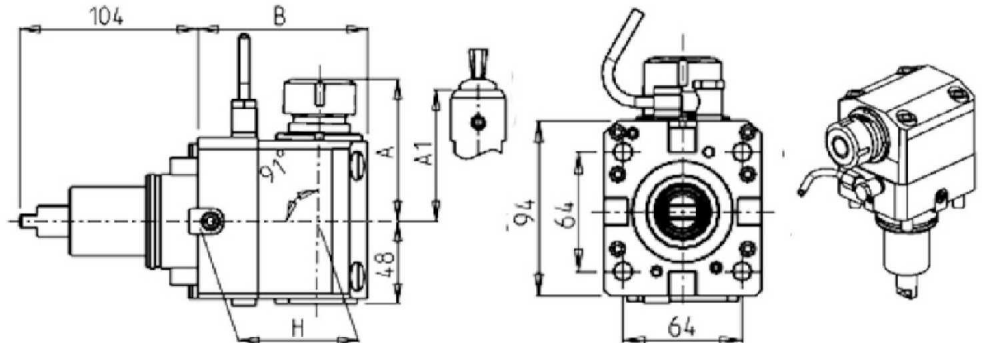
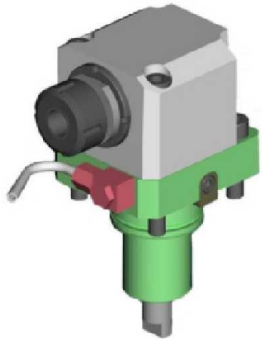
*Coolant Thru tools are designed for 400 psi MAX.
They require 5 Micron Filtration and **CANNOT** be run dry.

WTS-52/65 Y2M 16ST. - ML-250

DRIVEN

AXIAL DRIVEN TOOL FOR INTERNAL POLYGON MAKING H=70mm

See Accessories for Polygon Making Mill Heads

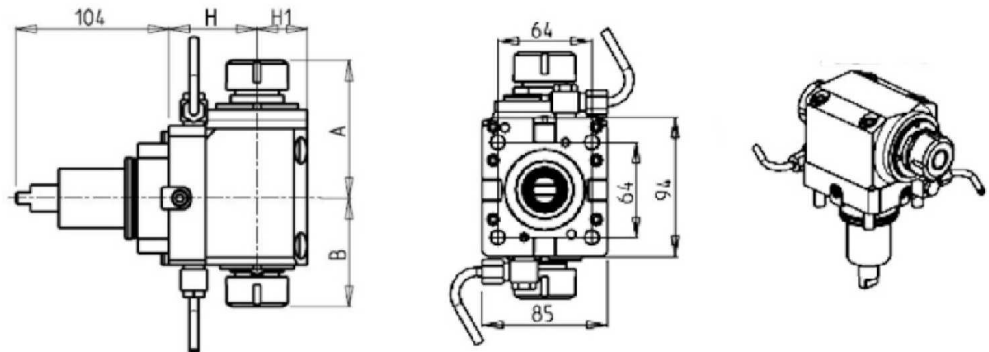


Part Number	Description	Reversible	Spindle	I	RPM	Ext. Cool	A	A1	H	B
DWO 0249125	Internal Polygon-Making ER25	X	ER25	1:1	6000	X	82.35		70	99
DWO 0249108	Internal Polygon-Making Weldon 8	X	Weldon 8	1:1	6000	X		76.5	70	99
DWO 0249110	Internal Polygon-Making Weldon 10	X	Weldon 10	1:1	6000	X		76.5	70	99
DWO 0249112	Internal Polygon-Making Weldon 12	X	Weldon 12	1:1	6000	X		76.5	70	99
DWO 0249116	Internal Polygon-Making Weldon 16	X	Weldon 16	1:1	6000	X		76.5	70	99

AXIAL OPPOSITE FACE DRIVEN TOOL H=70mm

THIS TOOL WILL ONLY FIT THE FOLLOWING MACHINE MODELS:

WTS-52/65 Y2M 16ST. (LOWER TURRET ONLY)



Part Number	Description	Reversible	Spindle	I	RPM	Ext. Cool	A	B	H	H1
DWO 0080325	Axial Double Outlet ER25/ER25 H=70mm	X	ER25+ER25	1:1	6000	X	93.36	73.46	70	34
DWO 0080332	Axial Double Outlet ER32/ER32 H=70mm	X	ER32+ER32	1:1	6000	X	100.56	79.46	70	34

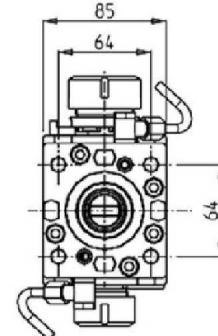
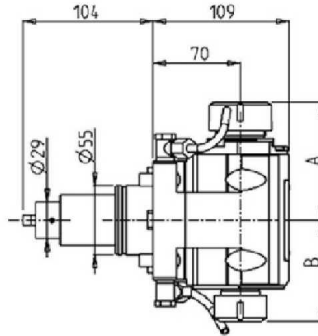
WTS-52/65 Y2M 16ST. - ML-250

DRIVEN

AXIAL OPPOSITE FACE DRIVEN TOOL H=70mm

THIS TOOL WILL ONLY FIT THE FOLLOWING MACHINE MODELS:

WTS-52/65 Y2M 16ST. (LOWER TURRET ONLY)

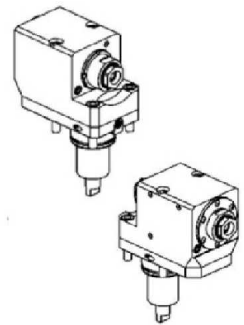
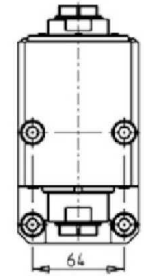
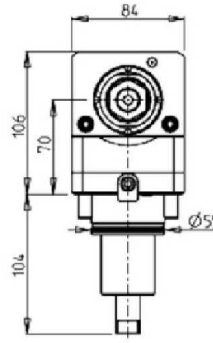
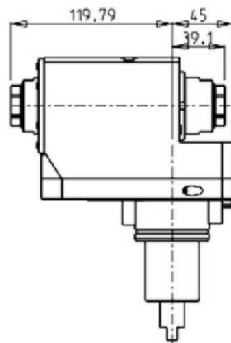
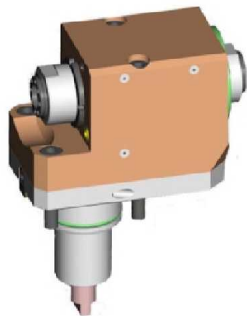


Part Number	Description	Spindle	I	RPM	Reversible	Ext. Cool	A	B
DWO 1713225	Axial Double Outlet ER32/ER25 H=70mm	ER32+ER25	1:1	6000	X	X	93.66	80.16
DWO 1712520	Axial Double Outlet ERA25/ERA20 H=70mm	ERA25+ERA20	1:1	6000	X	X	65	55.5

AXIAL OPPOSITE FACE REAR-SET DRIVEN TOOL

THIS TOOL WILL ONLY FIT THE FOLLOWING MACHINE MODELS:

WTS-52/65 Y2M 16ST. (LOWER TURRET ONLY)

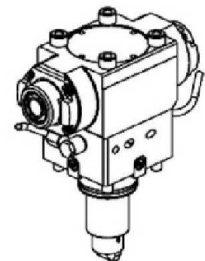
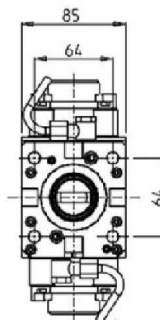
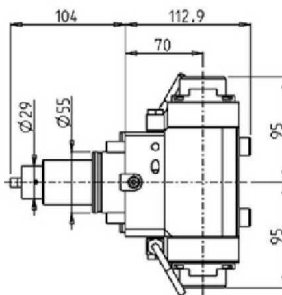


Part Number	Description	Reversible	Spindle	I	RPM	Ext. Cool
0632525	Axial Off-Set Double Outlet ERA25/ERA25 H=70mm	X	ERA25+ERA25	1:1	6000	X

AXIAL GEARED-UP 1:2 OPPOSITE FACE TWIN DRIVEN TOOL H=70mm

THIS TOOL WILL ONLY FIT THE FOLLOWING MACHINE MODELS:

WTS-52/65 Y2M 16ST.



Part Number	Description	Spindle	I	RPM	Reversible	Ext Cool
DWO 3931225	Axial Geared-Up 1:2 Opposite Face ERA25+ERA25	ERA25+ERA25	1:2	12000	X	X

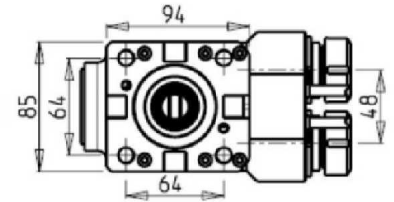
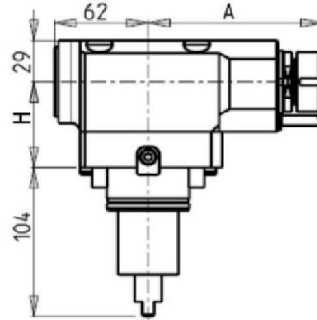
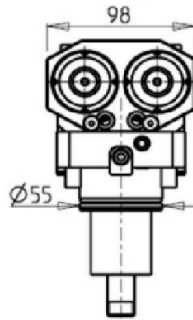
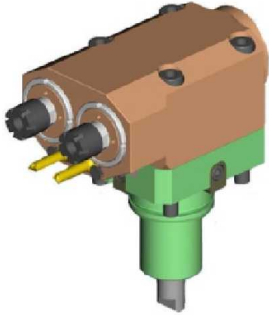
WTS-52/65 Y2M 16ST. - ML-250

DRIVEN

AXIAL SINGLE SIDE TWIN HEAD DRIVEN TOOL H=70mm

THIS TOOL WILL ONLY FIT THE FOLLOWING MACHINE MODELS:

WTS-52/65 Y2M 16ST. (LOWER TURRET ONLY)



Part Number	Description	Reversible	Spindle	I	RPM	Ext. Cool	A	H
DWO 0102216	Axial Y AXIS Double Outlet ER16 H=70mm	X	ER16	1:1	6000	X	115.15	70
DWO 0102225	Axial Y AXIS Double Outlet ER25 H=70mm	X	ER25	1:1	6000	X	115.61	70

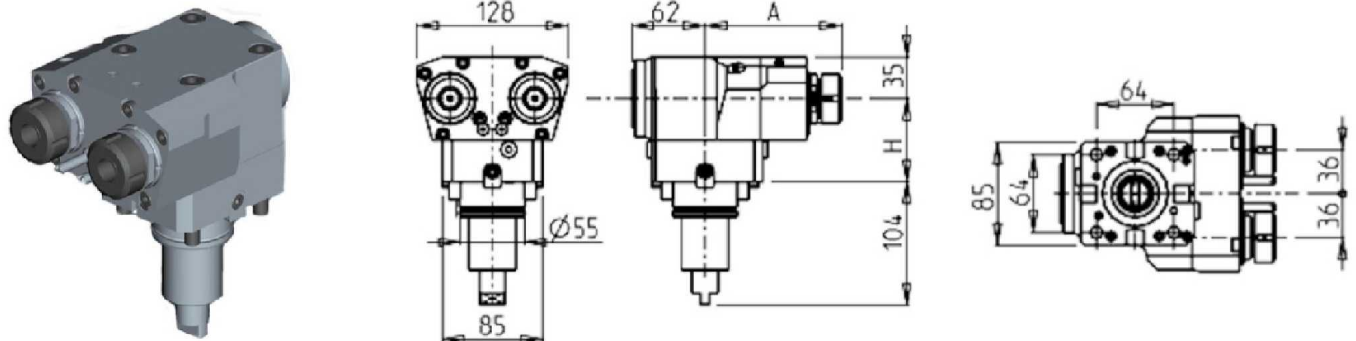
WTS-52/65 Y2M 16ST. - ML-250

DRIVEN

AXIAL GEARED-UP 1:2 SINGLE SIDE TWIN HEAD DRIVEN TOOL IN Y H=70mm

THIS TOOL WILL ONLY FIT THE FOLLOWING MACHINE MODELS:

WTS-52/65 Y2M 16ST. (LOWER TURRET ONLY)

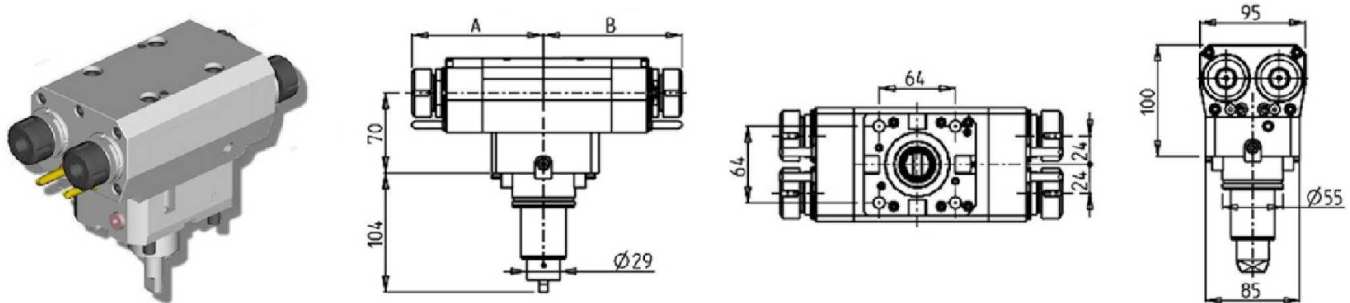


Part Number	Description	Reversible	Spindle	I	RPM	Ext. Cool	A	H
DWO 0951216	Axial Geared-Up 1:2 Y-Axis Double ER16 H=70	X	ER16	1:2	12000	X	115	70
DWO 0951225	Axial Geared-Up 1:2 Y-Axis Double ER25 H=70	X	ER25	1:2	12000	X	115.96	70

AXIAL MULTIPLE 2+2 OUTLET DRIVEN TOOL IN Y H=70mm

THIS TOOL WILL ONLY FIT THE FOLLOWING MACHINE MODELS:

WTS-52/65 Y2M 16ST. (LOWER TURRET ONLY)

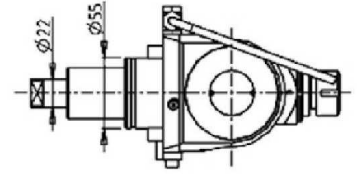
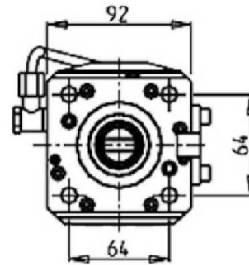
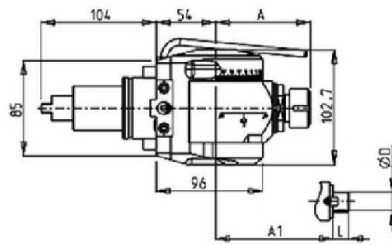


Part Number	Description	Spindle	I	RPM	Reversible	# of Tools	Ext Cool	A	B	H
DWO 2400416	Axial Multiple 2+2 Outlet in Y ER16+ER16	ER16+ER16	1:1	6000	X	2+2	X	114.7	120.7	70
DWO 2400425	Axial Multiple 2+2 Outlet in Y ER25+ER25	ER25+ER25	1:1	6000	X	2+2	X	115.6	121.6	70

WTS-52/65 Y2M 16ST. - ML-250

DRIVEN

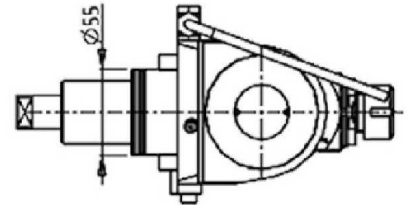
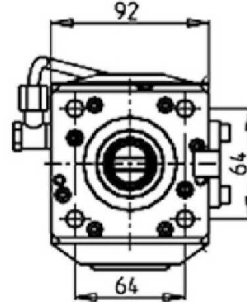
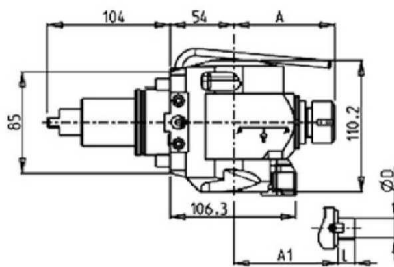
0-180 ADJUSTABLE ANGLE DRIVEN TOOL H=54mm



Part Number	Description	Spindle	I	RPM	Reversible	Ext Cool	A	A1	D	L
DWO 1910120	0-180 Adjustable Angle ER20	ER20	1:1	6000	X	X	85.16			
DWO 1910125	0-180 Adjustable Angle ER25	ER25	1:1	6000	X	X	86.16			
DWO 1910519	0-180 Adjustable Angle 3/4"x3/4"	3/4"x3/4"	1:1	6000	X	X	65	3/4"	3/4"	
DWO 1910516	0-180 Adjustable Angle 16x17mm	16x17mm	1:1	6000	X	X	65	16	17	
DWO 1910522	0-180 Adjustable Angle 22x19mm	22x19mm	1:1	6000	X	X	66	22	19	

Note : Wrenches are provided with the purchase of Specialty Toolholders

0-180 ADJUSTABLE ANGLE DRIVEN TOOL WITH DIGITAL DISPLAY H=54mm



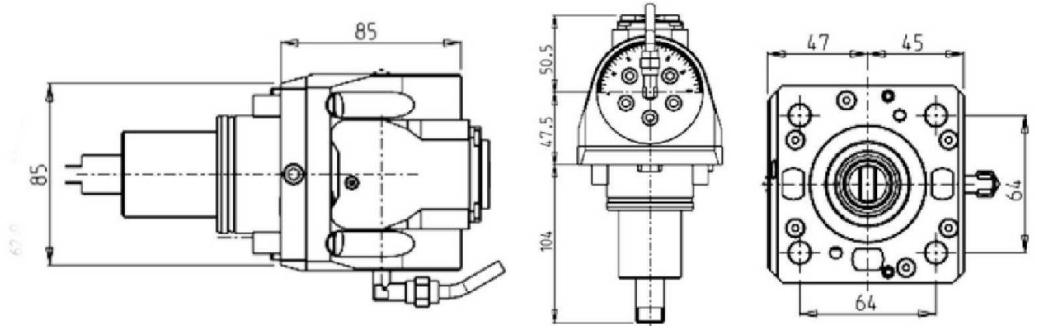
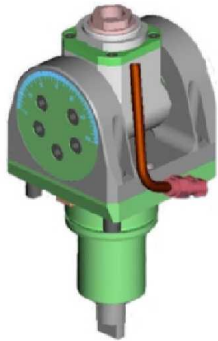
Part Number	Description	Spindle	I	RPM	Reversible	Ext Cool	A	A1	D	L
DWO 1840120	0-180 Adj. Angle ER20 with Digital Display	ER20	1:1	6000	X	X	85.16			
DWO 1840125	0-180 Adj. Angle ER5 with Digital Display	ER25	1:1	6000	X	X	86.16			
DWO 1840519	0-180 Adj. Angle 3/4"x3/4" with Digital Display	3/4"x3/4"	1:1	6000	X	X	65	3/4"	3/4"	
DWO 1840516	0-180 Adj. Angle 16x17mm with Digital Display	16x17mm	1:1	6000	X	X	65	16	17	
DWO 1840522	0-180 Adj. Angle 22x19mm with Digital Display	22x19mm	1:1	6000	X	X	66	22	19	

Note : Wrenches are provided with the purchase of Specialty Toolholders

WTS-52/65 Y2M 16ST. - ML-250

DRIVEN

0-180 ADJUSTABLE ANGLE DRIVEN TOOL H=47.5mm



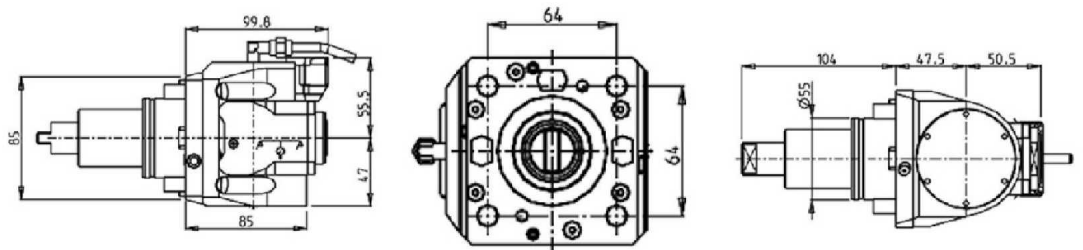
Part Number	Description	Spindle	I	RPM	Cool Thru	Ext. Cool
DWO 0660120	0-180 Adj.Angle ERA20 H=47.5mm	ERA20	1:1	6000		X
DWO 0660220	0-180 Adj.Angle ERA20 H=47.5mm, Cool Thru*	ERA20	1:1	6000	X	X

* Coolant Thru tools are designed for 1000 psi.
They require 5 Micron Filtration and **CANNOT** be run dry.

Note :

Wrenches are provided with the purchase of Specialty Toolholders

0-180 ADJUSTABLE ANGLE DRIVEN TOOL WITH DIGITAL DISPLAY H=47.5mm



Part Number	Description	Spindle	I	RPM	Cool Thru	Ext Cool
DWO 0665120	0-180 Adj. Angle ERA20 with Digital Display	ERA20	1:1	6000		X
DWO 0665220	0-180 Adj. Angle ERA20 with Digital Display Cool Thru*	ERA20	1:1	6000	X	X

* Coolant Thru tools are designed for 1000 psi.
They require 5 Micron Filtration and **CANNOT** be run dry.

Note :

Wrenches are provided with the purchase of Specialty Toolholders

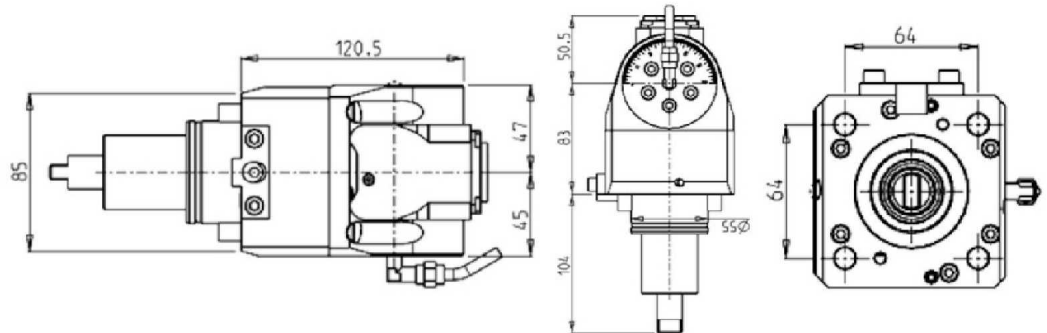
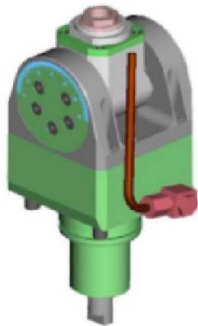
WTS-52/65 Y2M 16ST. - ML-250

DRIVEN

0-180 ADJUSTABLE ANGLE DRIVEN TOOL H=83mm

THIS TOOL WILL ONLY FIT THE FOLLOWING MACHINE MODELS:

WTS-52/65 Y2M 16ST.



Part Number	Description	Spindle	I	RPM	Cool Thru	Ext. Cool
DWO 0661120	0-180 Adj.Angle ERA20 H=83mm	ERA20	1:1	6000		X
DWO 0661220	0-180 Adj.Angle ERA20 H=83mm, Cool Thru*	ERA20	1:1	6000	X	X

* Coolant Thru tools are designed for 1000 psi.
They require 5 Micron Filtration and **CANNOT** be run dry.

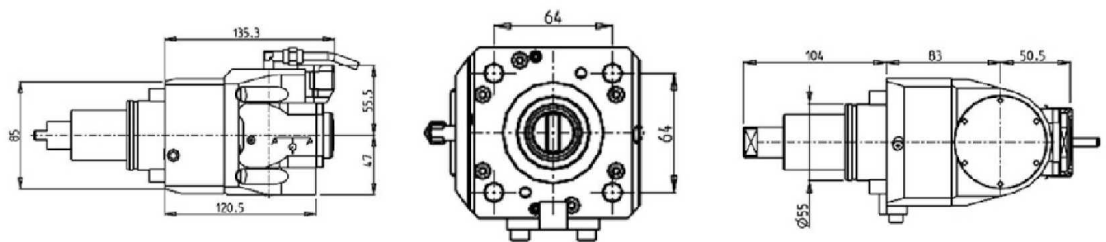
Note :

Wrenches are provided with the purchase of Specialty Toolholders

0-180 ADJUSTABLE ANGLE DRIVEN TOOL WITH DIGITAL DISPLAY H=83mm

THIS TOOL WILL ONLY FIT THE FOLLOWING MACHINE MODELS:

WTS-52/65 Y2M 16ST.



Part Number	Description	Spindle	I	RPM	Cool Thru	Ext Cool
DWO 0666120	0-180 Adj. Angle ERA20 with Digital Display	ERA20	1:1	6000		X
DWO 0666220	0-180 Adj. Angle ERA20 with Digital Display Cool Thru*	ERA20	1:1	6000	X	X

* Coolant Thru tools are designed for 1000 psi.
They require 5 Micron Filtration and **CANNOT** be run dry.

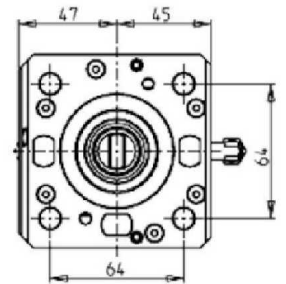
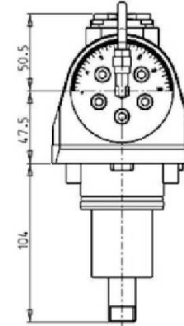
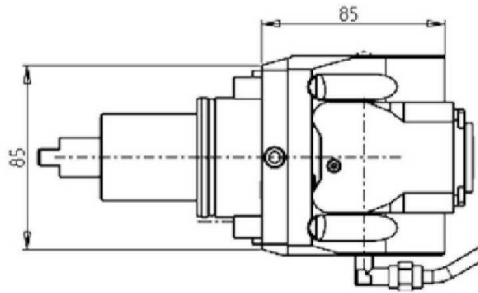
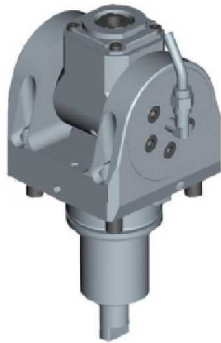
Note :

Wrenches are provided with the purchase of Specialty Toolholders

WTS-52/65 Y2M 16ST. - ML-250

DRIVEN

0-180 ADJUSTABLE ANGLE GEARED-UP 1:2 DRIVEN TOOL H=47.5mm



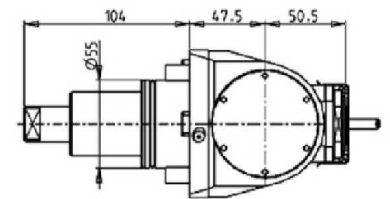
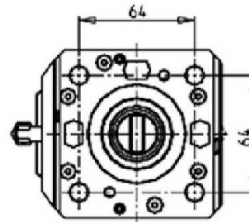
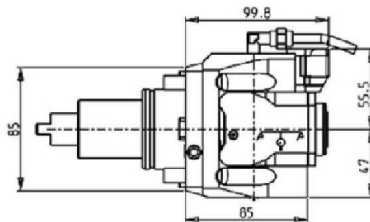
Part Number	Description	Spindle	I	RPM	Cool Thru	Ext. Cool
DWO 0660316	0-180 Adj.Angle Geared-Up 1:2 ERA16	ERA16	1:2	12000		X
DWO 0660416	0-180 Adj.Angle Geared-Up 1:2 ERA16 Cool Thru*	ERA16	1:2	12000	X	X

* Coolant Thru tools are designed for 1000 psi.
They require 5 Micron Filtration and **CANNOT** be run dry.

Note :

Wrenches are provided with the purchase of Specialty Toolholders

0-180 ADJUSTABLE ANGLE DRIVEN TOOL GEARED-UP 1:2 WITH DIGITAL DISPLAY H=47.5mm



Part Number	Description	Spindle	I	RPM	Cool Thru	Ext Cool
DWO 0665316	0-180 Adj. Angle ERA16 Geared-Up with Digital Display	ERA16	1:2	12000		X
DWO 0665416	0-180 Adj. Angle ERA16 Geared-Up with Digital Display Cool Thru*	ERA16	1:2	12000	X	X

* Coolant Thru tools are designed for 1000 psi.
They require 5 Micron Filtration and **CANNOT** be run dry.

Note :

Wrenches are provided with the purchase of Specialty Toolholders

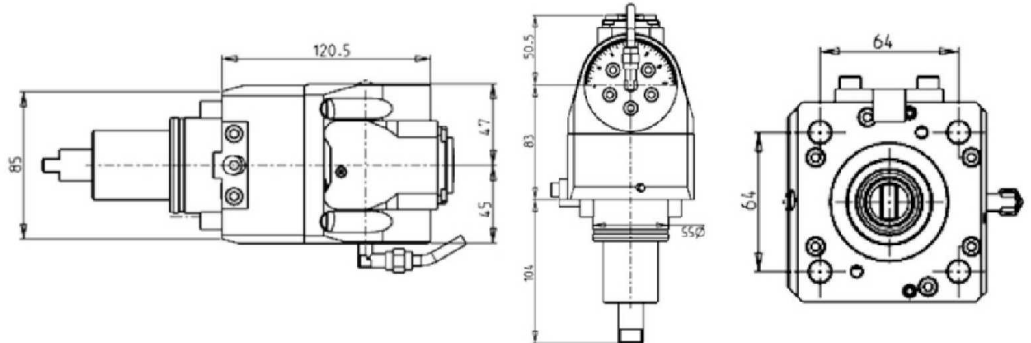
WTS-52/65 Y2M 16ST. - ML-250

DRIVEN

0-180 ADJUSTABLE ANGLE GEARED-UP 1:2 DRIVEN TOOL H=83mm

THIS TOOL WILL ONLY FIT THE FOLLOWING MACHINE MODELS:

WTS-52/65 Y2M 16ST.



Part Number	Description	Spindle	I	RPM	Cool Thru	Ext. Cool
DWO 0661316	0-180 Adj.Angle Geared-Up 1:2 H=83mm	ERA16	1:2	12000		X
DWO 0661416	0-180 Adj.Angle Geared-Up 1:2 H=83mm, Cool Thru*	ERA16	1:2	12000	X	X

* Coolant Thru tools are designed for 1000 psi.
They require 5 Micron Filtration and **CANNOT** be run dry.

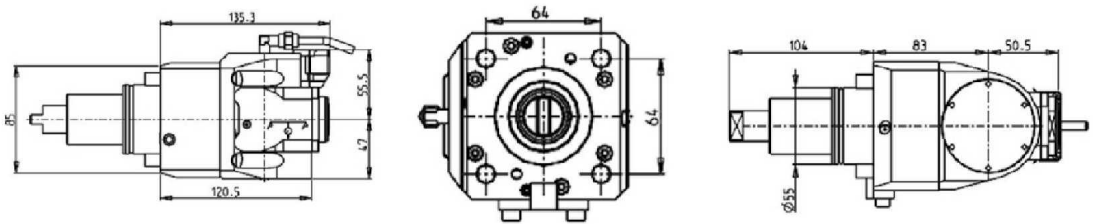
Note :

Wrenches are provided with the purchase of Specialty Toolholders

0-180 ADJUSTABLE ANGLE DRIVEN TOOL GEARED-UP 1:2 WITH DIGITAL DISPLAY H=83mm

THIS TOOL WILL ONLY FIT THE FOLLOWING MACHINE MODELS:

WTS-52/65 Y2M 16ST.



Part Number	Description	Spindle	I	RPM	Cool Thru	Ext Cool
DWO 0666316	0-180 Adj. Angle ERA16 Geared-Up with Digital Display	ERA16	1:2	12000		X
DWO 0666416	0-180 Adj. Angle ERA16 Geared-Up with Digital Display Cool Thru*	ERA16	1:2	12000	X	X

* Coolant Thru tools are designed for 1000 psi.
They require 5 Micron Filtration and **CANNOT** be run dry.

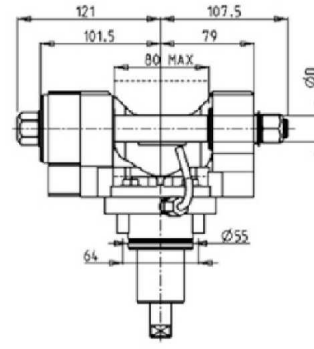
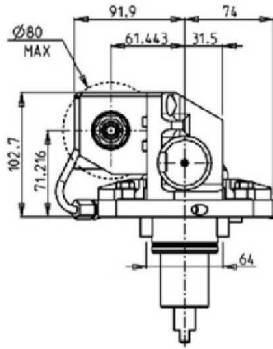
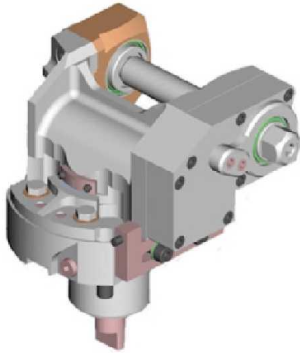
Note :

Wrenches are provided with the purchase of Specialty Toolholders

WTS-52/65 Y2M 16ST. - ML-250

DRIVEN

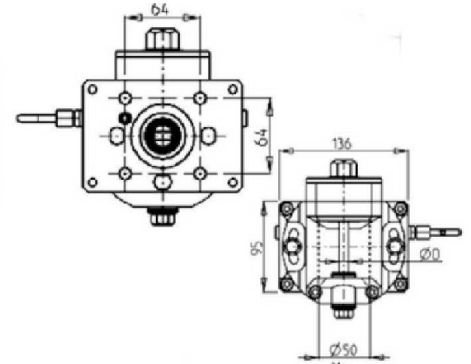
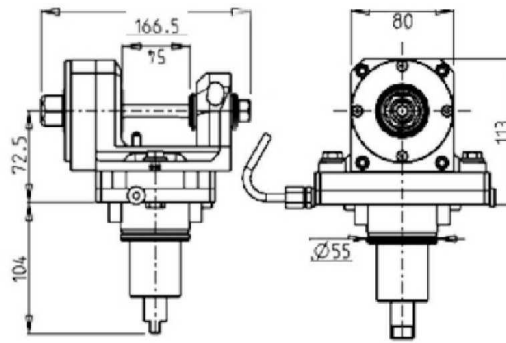
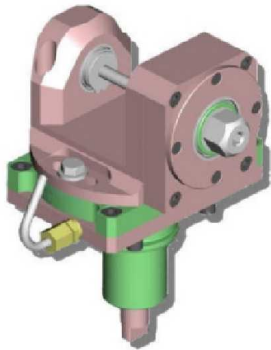
DRIVEN GEAR HOBBER



Part Number	Description	Reversible	I	RPM	Ext. Cool	D mm	D Inch
0621100	Gear Hobber 1:1	X	1:1	6000	X	16-22-27-32	3/4"-1"-1 1/4"
0622100	Geared-Down Gear Hobber 2:1	X	2:1	3000	X	16-22-27-32	3/4"-1"-1 1/4"

Note : Wrenches are provided with the purchase of Specialty Toolholders

RADIAL DRIVEN GEAR HOBBER



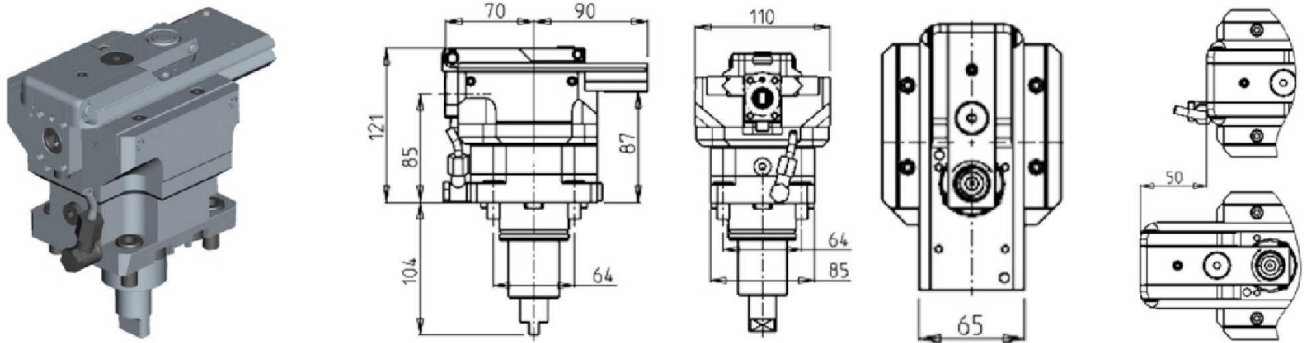
Part Number	Description	I	RPM	Ext. Cool	D mm
DWO 0051108	Radial Gear Hobber 1:1 D=8mm	1:1	6000	X	8
DWO 0051110	Radial Gear Hobber 1:1 D=10mm	1:1	6000	X	10
DWO 0051113	Radial Gear Hobber 1:1 D=13mm	1:1	6000	X	13
DWO 0051116	Radial Gear Hobber 1:1 D=16mm	1:1	6000	X	16

Note : Wrenches are provided with the purchase of Specialty Toolholders

WTS-52/65 Y2M 16ST. - ML-250

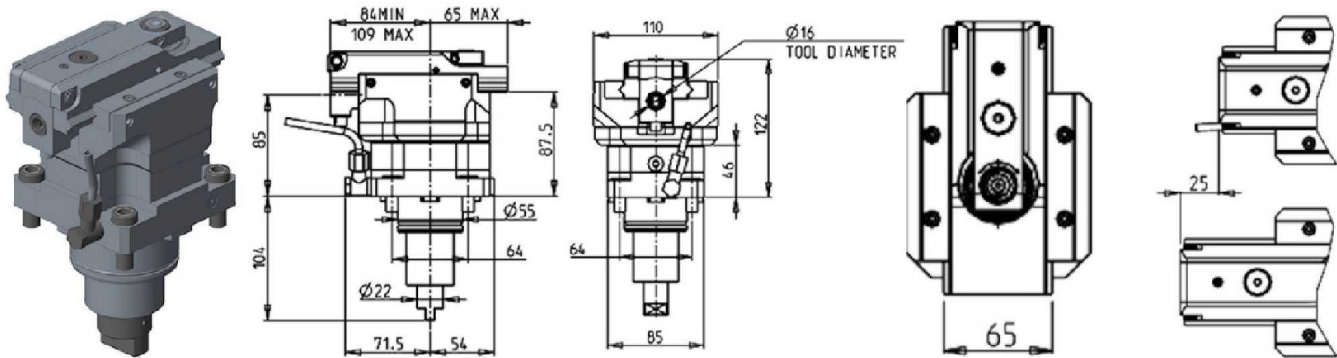
DRIVEN

BROACHING/SLOTING TOOL 50mm STROKE H=85mm



Part Number	Description	I	RPM	Reversible	Ext. Cool
DWO 1030100	Broaching/Slotting Tool 50mm Stroke	4:1	2000	X	X

BROACHING/SLOTING TOOL 25mm STROKE H=85mm

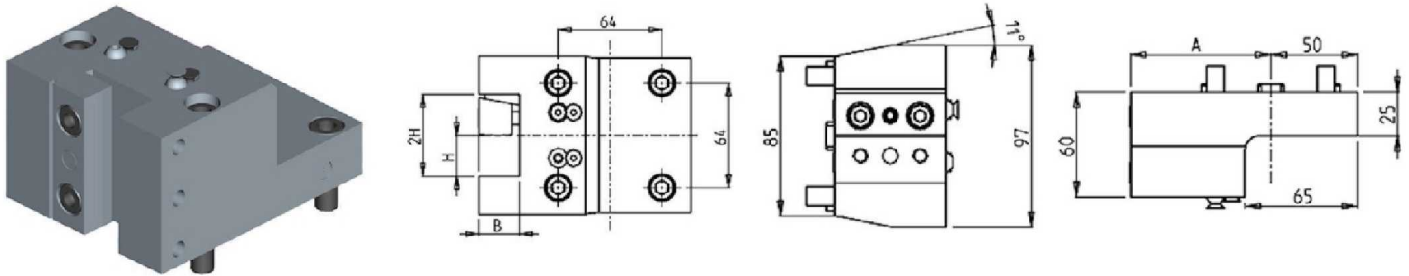


Part Number	Description	I	RPM MAX	Reversible	Ext. Cool
DWO 1030200	Broaching/Slotting Tool 25mm Stroke	4:1	2400	X	X

WTS-52/65 Y2M 16ST. - ML-250

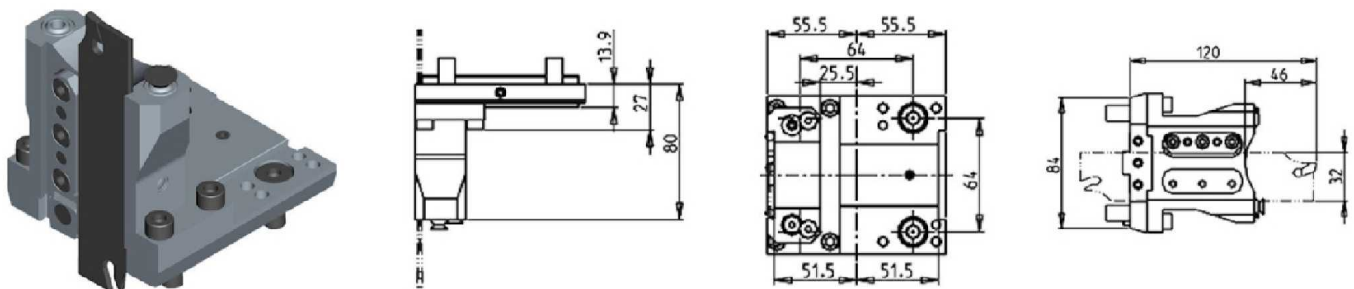
STATIC

RADIAL SINGLE STATIC TOOL



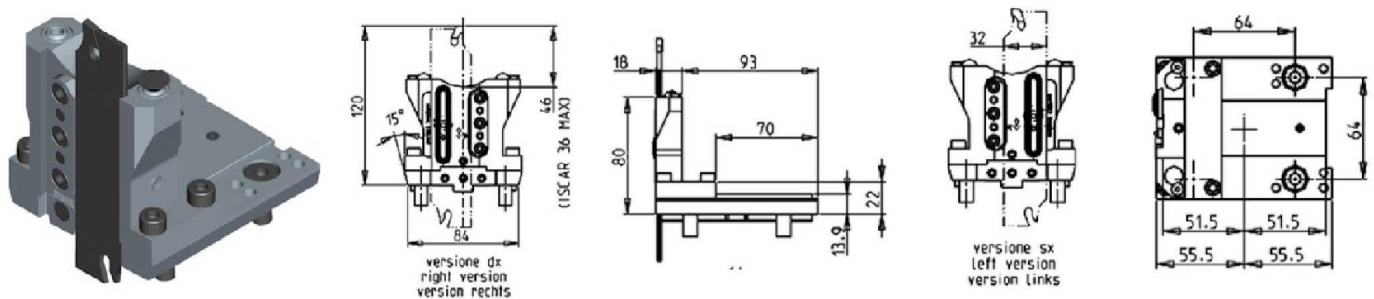
Part Number	Description	# of Tools	Reversible	Cool Thru	Ext Cool	Dimensions	A	B	H
DWO 3842540	Radial Single Static Tool 1"	1	X		X	Inch	76	1"	1"
DWO 3842500	Radial Single Static Tool 25mm	1	X		X	mm	76	25	25
DWO 2222510	Radial Single Static Tool 25mm Cool Thru	1	X	X	X	mm	81	25	25

RADIAL DOUBLE BLADE HOLDER WITH BLADE KIT



Part Number	Description	# of Tools	Reversible	Ext Cool
DWO 2380132	Radial Blade Holder with Blade Kit	1	X	X
BLADEKIT	Blade Kit: 1 Blade, 10 Inserts			

RADIAL BLADE HOLDER WITH INTERNAL COOLANT-BLADE KIT NOT INCLUDED

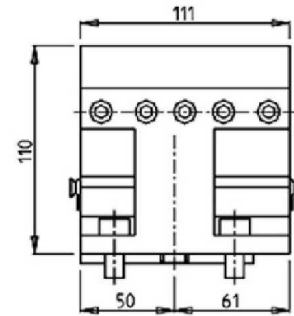
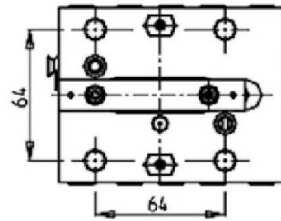
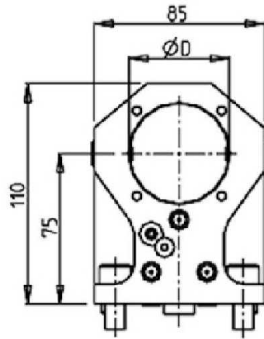
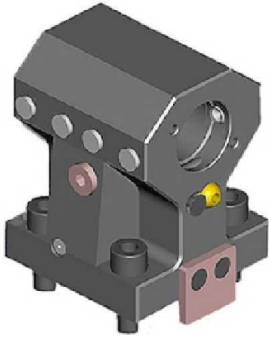


Part Number	Description	# of Tools	Reversible	Ext Cool	Cool Thru
DWO 2390132R	Radial Double Blade Holder Cool Thru (Right Hand)	1	X	X	X
DWO 2390132L	Radial Double Blade Holder Cool Thru (Left Hand)	1	X	X	X
COOL THRU BLADEKIT	Blade Kit: 1 Blade, 10 Inserts				

WTS-52/65 Y2M 16ST. - ML-250

STATIC

AXIAL SINGLE BORING BAR HOLDER H=75mm

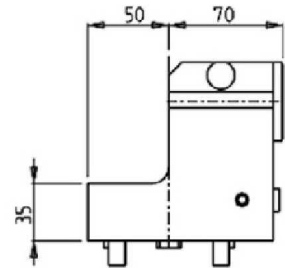
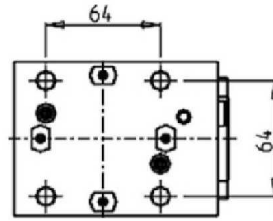
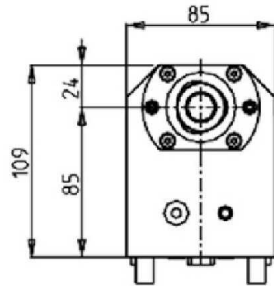
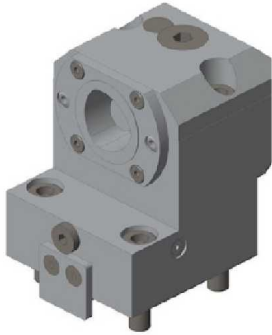


Part Number	Description	Reversible	Cool Thru	Ext Cool	Dimensions	D
DWO 2355080	Axial Single BBH 2"	X	X	X	Inch	2"
DWO 2355000	Axial Single BBH 50mm	X	X	X	mm	50
KIT 1000002	Plug for 50mm or 2" BBH to Make Cool Thru					

WTS-52/65 Y2M 16ST. - ML-250

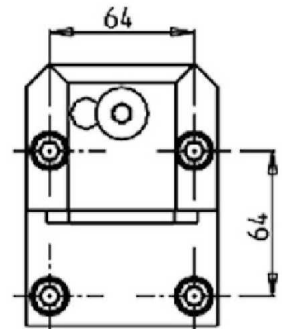
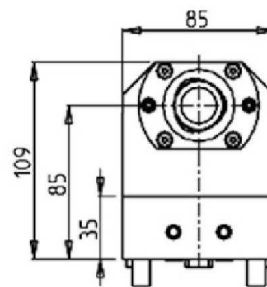
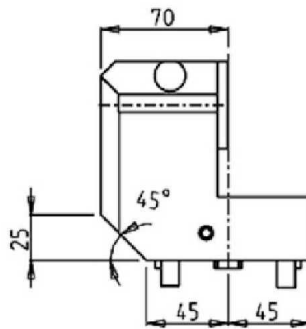
STATIC

AXIAL SINGLE STATIC TOOL CAPTO C4



Part Number	Description	Cool Thru	Ext Cool	Reversible	Size
DWO 3804010	Axial Single Static Tool Capto C4 Right Hand	X	X	X	C4
DWO 3804010LC	Axial Single Static Tool Capto C4 Left Hand	X	X	X	C4

AXIAL REAR-SET BORING BAR HOLDER CAPTO C4

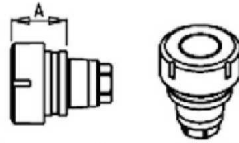


Part Number	Description	Cool Thru	Reversible	Size
DWO 2434010	Axial Rear Set Boring Bar Capto C4 Right Hand	X	X	C4
DWO 2434010LC	Axial Rear Set Boring Bar Capto C4 Left Hand	X	X	C4

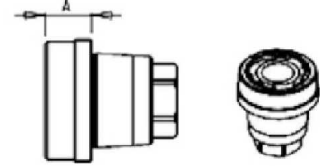
ACCESSORIES

DRIVEN

MTSK-40 ER ADAPTORS



Cod. MT	Mandrino Spindle	A
MTSK40A02	ER32	35.6
MTSK40A03	ER25	32.6
MTSK40A05	ER16	30.26
MTSK40A06	ER16	47.5
MTSK40A07	ER16	59
MTSK40A08	ER11	40
MTSK40A09	ER11	70



Cod. MT	Mandrino Spindle	A
MTSK40B02	ERA25	16
MTSK40B03	ERA20	14

Part Number	Description	Spindle	A
MTSK40A08	MTSK-40 Adaptor ER11	ER11	40
MTSK40A09	MTSK-40 Adaptor ER11	ER11	70
MTSK40A05	MTSK-40 Adaptor ER16	ER16	30.26
MTSK40A06	MTSK-40 Adaptor ER16	ER16	47.5
MTSK40A07	MTSK-40 Adaptor ER16	ER16	59
MTSK40B03	MTSK-40 Adaptor ERA20	ERA20	14
MTSK40B02	MTSK-40 Adaptor ERA25	ERA25	16
MTSK40A03	MTSK-40 Adaptor ER25	ER25	32.6
MTSK40A02	MTSK-40 Adaptor ER32	ER32	35.6

ACCESSORIES

DRIVEN

MTSK-40 MILL ADAPTORS



Cod. MT	Handline Spindle	A
MTSK40D01	WELDON 6	8
MTSK40D21	WELDON 6	27.5
MTSK40D02	WELDON 8	8
MTSK40D03	WELDON 10	9
MTSK40D04	WELDON 12	14
MTSK40D05	WELDON 16	39.5
MTSK40D07	WELDON 20	39.5
MTSK40D24	WELDON 10	33
MTSK40D25	WELDON 12	35.5

Cod. MT	Handline Spindle	A
MTSK40G03	MR25	33.6

Cod. MT	Handline Spindle	Measure Dimensions	A	D	L
MTSK40C03	Ø 16x17	inch	15	16	17
MTSK40C02	Ø 16x17	inch	15.5	16	17
MTSK40C04	Ø 22x19	mm	17	22	19
MTSK40C05	Ø 27x21	mm	22	27	21

Cod. MT	Handline Spindle	A
MTSK40D11	WELDON 1/4"	8
MTSK40D12	WELDON 5/16"	8
MTSK40D13	WELDON 3/8"	9
MTSK40D14	WELDON 1/2"	14

Cod. MT	Handline Spindle	A
MTSK40H01	MORSE-1	29
MTSK40H02	MORSE-2	42

Cod. MT	Handline Spindle	Measure Dimensions	A	D	L
MTSK40T00	Ø 1/2"	inch	32	1/2"	6.5

Cod. MT	Type of protection	A
MTSK40T00	Cover Plug Adapters	33.6

Part Number	Description	Spindle	Dimension	A	D	L
MTSK40C03	MTSK-40 Adaptor Mill 3/4"	3/4"x3/4"	Inch	15.5	3/4"	3/4"
MTSK40C02	MTSK-40 Adaptor Mill 16x17	16x17	mm	15	16	17
MTSK40C04	MTSK-40 Adaptor Mill 22x19	22x19	mm	17	22	19
MTSK40C05	MTSK-40 Adaptor Mill 27x21	27x21	mm	22	27	21
MTSK40F01	MTSK-40 Adaptor Mill 1/2"	1/2" Arbor	Inch	32	1/2"	6.5
MTSK40D11	MTSK-40 Adaptor Weldon 1/4"	Weldon 1/4"		8		
MTSK40D12	MTSK-40 Adaptor Weldon 5/16"	Weldon 5/16"		8		
MTSK40D13	MTSK-40 Adaptor Weldon 3/8"	Weldon 3/8"		9		
MTSK40D14	MTSK-40 Adaptor Weldon 1/2"	Weldon 1/2"		14		
MTSK40D01	MTSK-40 Adaptor Weldon 6	Weldon 6		8		
MTSK40D21	MTSK-40 Adaptor Weldon 6	Weldon 6		27.5		
MTSK40D02	MTSK-40 Adaptor Weldon 8	Weldon 8		8		
MTSK40D03	MTSK-40 Adaptor Weldon 10	Weldon 10		9		
MTSK40D24	MTSK-40 Adaptor Weldon 10	Weldon 10		33		
MTSK40D04	MTSK-40 Adaptor Weldon 12	Weldon 12		14		
MTSK40D25	MTSK-40 Adaptor Weldon 12	Weldon 12		35.5		
MTSK40D06	MTSK-40 Adaptor Weldon 16	Weldon 16		39.5		
MTSK40D07	MTSK-40 Adaptor Weldon 20	Weldon 20		39.5		
MTSK40H01	MTSK-40 Adaptor Morse 1	MORSE-1		29		
MTSK40H02	MTSK-40 Adaptor Morse 2	MORSE-2		42		
MTSK40G03	MTSK-40 Adaptor MR25	MR25		33.6		
MTSK40T00	MTSK-40 Cover Plug					

ER COLLETS

ER COLLET NUMBER	DESCRIPTION	MD LIST PRICE
ER20 SET	ER20 Collet Set (15 Collets)	\$ 330.00
ERX20 SET	ER20 Sealed Collet Set (13 Collets)	\$ 395.00
ER25 SET	ER25 Collet Set (19 Collets)	\$ 375.00
ERX25 SET	ER25 Sealed Collet Set (17 Collets)	\$ 475.00
ER32 SET	ER32 Collet Set (21 Collets)	\$ 425.00
ERX32 SET	ER32 Sealed Collet Set (21 Collets)	\$ 595.00
ER40 SET	ER40 Collet Set (29 Collets)	\$ 695.00
ERX40 SET	ER40 Sealed Collet Set (27 Collets)	\$ 850.00



Phone: (810) 632-4446 / Fax: (810) 632-4467

Table of Contents

Alphabetized Listing

0		
0-180 ADJUSTABLE ANGLE DRIVEN TOOL GEARED-UP 1:2 WITH DIGITAL DISPLAY H=47.5mm	28	
0-180 ADJUSTABLE ANGLE DRIVEN TOOL GEARED-UP 1:2 WITH DIGITAL DISPLAY H=83mm	29	
0-180 ADJUSTABLE ANGLE DRIVEN TOOL H=47.5mm	26	
0-180 ADJUSTABLE ANGLE DRIVEN TOOL H=54mm	25	
0-180 ADJUSTABLE ANGLE DRIVEN TOOL H=83mm	27	
0-180 ADJUSTABLE ANGLE DRIVEN TOOL WITH DIGITAL DISPLAY H=47.5mm	26	
0-180 ADJUSTABLE ANGLE DRIVEN TOOL WITH DIGITAL DISPLAY H=54mm	25	
0-180 ADJUSTABLE ANGLE DRIVEN TOOL WITH DIGITAL DISPLAY H=83mm	27	
0-180 ADJUSTABLE ANGLE GEARED-UP 1:2 DRIVEN TOOL H=47.5mm	28	
0-180 ADJUSTABLE ANGLE GEARED-UP 1:2 DRIVEN TOOL H=83mm	29	
0-180° ADJUSTABLE ANGLE DRIVEN TOOL	6	
0-180° ADJUSTABLE ANGLE DRIVEN TOOL GEARED-UP 1:2	7	
0-180° ADJUSTABLE ANGLE DRIVEN TOOL GEARED-UP 1:2 WITH DIGITAL DISPLAY	7	
0-180° ADJUSTABLE ANGLE DRIVEN TOOL WITH DIGITAL DISPLAY	6	

A		
ACCESSORIES	35-36	
AXIAL 3+3 POSITION BORING BAR HOLDER	13	
AXIAL DOUBLE BORING BAR HOLDER	13	
AXIAL DRIVEN TOOL FOR INTERNAL POLYGON MAKING H=70mm	21	
AXIAL DRIVEN TOOL H=55mm	3	
AXIAL DRIVEN TOOL H=65mm	3	
AXIAL DRIVEN TOOL H=65mm	4	
AXIAL DRIVEN TOOL H=70mm	18	
AXIAL GEARED-UP 1:2 DRIVEN TOOL	5	
AXIAL GEARED-UP 1:2 DRIVEN TOOL H=70mm	20	
AXIAL GEARED-UP 1:2 OPPOSITE FACE TWIN DRIVEN TOOL H=70mm	22	
AXIAL GEARED-UP 1:2 SINGLE SIDE TWIN HEAD DRIVEN TOOL IN Y H=70mm	24	
AXIAL GEARED-UP 1:5.625 DRIVEN TOOL H=70mm	20	
AXIAL MULTIPLE 2+2 OUTLET DRIVEN TOOL IN Y H=70mm	24	
AXIAL OPPOSITE FACE DRIVEN TOOL H=70mm	21	
AXIAL OPPOSITE FACE DRIVEN TOOL H=70mm	22	
AXIAL OPPOSITE FACE REAR-SET DRIVEN TOOL	22	
AXIAL OPPOSITE FACE TWIN DRIVEN TOOL H=65mm	5	
AXIAL REAR-SET BORING BAR HOLDER CAPTO C4	34	
AXIAL REAR-SET BORING SINGLE STATIC TOOL CAPTO C4	14	
AXIAL REAR-SET DRIVEN TOOL	19	
AXIAL SINGLE BORING BAR HOLDER H=75mm	12	
AXIAL SINGLE BORING BAR HOLDER H=75mm	12, 33	
AXIAL SINGLE SIDE TWIN HEAD DRIVEN TOOL H=70mm	23	
AXIAL SINGLE STATIC TOOL	12	
AXIAL SINGLE STATIC TOOL CAPTO C4	14, 34	

B		
BROACHING/SLOTING DRIVEN TOOL 25mm STROKE	9	
BROACHING/SLOTING DRIVEN TOOL 50mm STROKE	9	
BROACHING/SLOTING TOOL 25mm STROKE H=85mm	31	
BROACHING/SLOTING TOOL 50mm STROKE H=85mm	31	

C		
CYCLONE-52 TTMY / CYCLONE-52 3TMY / CYCLONE-70 TTMY / CYCLONE-70 3TMY / CYCLONE-78 MSY - CT1/CT2/CT3-52/65 YM/Y2M/Y2MS	1-14	

D		
DRIVEN	1-9, 15-31, 35-36	
DRIVEN GEAR HOBBER	8, 30	

M		
MTSK-40 ER ADAPTORS		35
MTSK-40 MILL ADAPTORS		36

Q		
QUICK CHANGE AXIAL MTSK DRIVEN TOOL FOR POWER SKIVING H=90mm	8	
QUICK CHANGE AXIAL MTSK DRIVEN TOOL H=65mm	4	
QUICK CHANGE AXIAL MTSK-40 DRIVEN TOOL H=70mm	19	
QUICK CHANGE RADIAL MTSK-40 DRIVEN TOOL	15	

R		
RADIAL ±30° ADJUSTABLE ANGLE DRIVEN TOOL REDIRECTED BY 30mm	17	
RADIAL BLADE HOLDER WITH BLADE KIT	11	
RADIAL BLADE HOLDER WITH INTERNAL COOLANT - BLADE KIT NOT INCLUDED	11	
RADIAL BLADE HOLDER WITH INTERNAL COOLANT-BLADE KIT NOT INCLUDED	32	
RADIAL DOUBLE BLADE HOLDER WITH BLADE KIT	32	
RADIAL DOUBLE STATIC TOOL	10	
RADIAL DRIVEN GEAR HOBBER	30	
RADIAL DRIVEN TOOL	1, 15	
RADIAL DRIVEN TOOL RE-DIRECTED IN Z BY 36mm	16	
RADIAL GEARED-DOWN 2:1 DRIVEN TOOL RE-DIRECTED IN Z BY 36mm	16	
RADIAL GEARED-DOWN 2:1 DRIVEN TOOL REDIRECTED IN Z BY 68mm	1	
RADIAL GEARED-UP 1:2 DRIVEN TOOL RE-DIRECTED IN Z BY 36mm	17	
RADIAL GEARED-UP 1:2 DRIVEN TOOL REDIRECTED IN Z BY 68mm	2	
RADIAL GEARED-UP 1:2 SINGLE SIDE TWIN HEAD DRIVEN TOOL IN Y	2	
RADIAL SINGLE SIDE TWIN STATIC TOOL	10	
RADIAL SINGLE STATIC TOOL	10, 32	

S		
See Accessories for MTSK Quick Change Tool Holder Clamps	4, 8, 15, 19	
See Accessories for Polygon Making Mill Heads	21	
STATIC	10-14, 32-34	

W		
WTS-52/65 Y2M 16ST. - ML-250		15-34

Table of Contents

Part Number Index

O			DWO 0801140	Radial MTSK-40 Driven Tool	15
0621100	Gear Hobber 1:1	30	DWO 0880125	Axial ER25 H=70mm	18
0622100	Geared-Down Gear Hobber 2:1	30	DWO 0880132	Axial ER32 H=70mm	18
0630025	Axial ER25 Standard Rear-Set H=78mm	19	DWO 0880140	Axial ER40 H=70mm	18
0632525	Axial Off-Set Double Outlet ERA25/ERA25 H=70mm	22	DWO 0880225	Axial ER25 H=70mm Cool Thru*	18
0720016	Radial Redirected Mill Head 16x17mm	16	DWO 0880232	Axial ER32 H=70mm Cool Thru*	18
0720022	Radial Redirected Mill Head 22x19mm	16	DWO 0880240	Axial ER40 H=70mm Cool Thru*	18
0720025	Radial Redirected ER25	16	DWO 0880325	Axial ERA25 H=70mm	18
0720027	Radial Redirected Mill Head 27x21mm	16	DWO 0880425	Axial ERA25 H=70mm Cool Thru*	18
0720032	Radial Redirected ER32	16	DWO 0880516	Axial Mill Head H=70mm	18
0721225	Radial Geared-Up 1:2 Redirected ER25	17	DWO 0880522	Axial Mill Head H=70mm	18
0722116	Radial Geared-Down Redirected Mill Head	16	DWO 0880527	Axial Mill Head H=70mm	18
0722122	Radial Geared-Down Redirected Mill Head	16	DWO 0901132	Radial ER32	15
0722127	Radial Geared-Down Redirected Mill Head	16	DWO 0901325	Radial ERA25	15
0722132	Radial Geared-Down 2:1 Redirected ER32	16	DWO 0901332	Radial ERA32	15
0893625	Axial Geared-Up 1:2 ER25 H=70mm	20	DWO 0951216	Axial Geared-Up 1:2 Y-Axis Double ER16 H=70	24
0893725	Axial Geared-Up 1:2 ER25 H=70mm Cool Thru*	20	DWO 0951225	Axial Geared-Up 1:2 Y-Axis Double ER25 H=70	24
B			DWO 1030100	Broaching/Slotting Tool 50mm Stroke	31
BLADEKIT	Blade Kit: 1 Blade, 10 Inserts	11	DWO 1030200	Broaching/Slotting Tool 25mm Stroke	31
BLADEKIT	Blade Kit: 1 Blade, 10 Inserts	32	DWO 1712520	Axial Double Outlet ERA25/ERA20 H=70mm	22
C			DWO 1713225	Axial Double Outlet ER32/ER25 H=70mm	22
COOL THRU	Blade Kit: 1 Blade, 10 Inserts	32	DWO 1840120	0-180 Adj. Angle ER20 with Digital Display	25
BLADEKIT			DWO 1840125	0-180 Adj. Angle ER5 with Digital Display	25
COOL THRU	Blade Kit: 1 Blade, 10 Inserts	11	DWO 1840516	0-180 Adj. Angle 16x17mm with Digital Display	25
BLADEKIT			DWO 1840519	0-180 Adj. Angle 3/4"x3/4" with Digital Display	25
D			DWO 1840522	0-180 Adj. Angle 22x19mm with Digital Display	25
DWO 0051108	Radial Gear Hobber 1:1 D=8mm	30	DWO 1910120	0-180 Adjustable Angle ER20	25
DWO 0051110	Radial Gear Hobber 1:1 D=10mm	30	DWO 1910125	0-180 Adjustable Angle ER25	25
DWO 0051113	Radial Gear Hobber 1:1 D=13mm	30	DWO 1910516	0-180 Adjustable Angle 16x17mm	25
DWO 0051116	Radial Gear Hobber 1:1 D=16mm	30	DWO 1910519	0-180 Adjustable Angle 3/4"x3/4"	25
DWO 0080325	Axial Double Outlet ER25/ER25 H=70mm	21	DWO 1910522	0-180 Adjustable Angle 22x19mm	25
DWO 0080332	Axial Double Outlet ER32/ER32 H=70mm	21	DWO 2222510	Radial Single Static Tool 25mm Cool Thru	32
DWO 0102216	Axial Y AXIS Double Outlet ER16 H=70mm	23	DWO 2355000	Axial Single BBH 50mm	33
DWO 0102225	Axial Y AXIS Double Outlet ER25 H=70mm	23	DWO 2355080	Axial Single BBH 2"	33
DWO 0190311	Axial Geared-Up Cool Thru* H=70mm	20	DWO 2380132	Radial Blade Holder with Blade Kit	32
DWO 0190316	Axial Geared-Up H=70mm	20	DWO 2390132L	Radial Double Blade Holder Cool Thru (Left Hand)	32
DWO 0249108	Internal Polygon-Making Weldon 8	21	DWO 2390132R	Radial Double Blade Holder Cool Thru (Right Hand)	32
DWO 0249110	Internal Polygon-Making Weldon 10	21	DWO 2400416	Axial Multiple 2+2 Outlet in Y ER16+ER16	24
DWO 0249112	Internal Polygon-Making Weldon 12	21	DWO 2400425	Axial Multiple 2+2 Outlet in Y ER25+ER25	24
DWO 0249116	Internal Polygon-Making Weldon 16	21	DWO 2434010	Axial Rear Set Boring Bar Capto C4 Right Hand	34
DWO 0249125	Internal Polygon-Making ER25	21	DWO 2434010LC	Axial Rear Set Boring Bar Capto C4 Left Hand	34
DWO 0660120	0-180 Adj.Angle ERA20 H=47.5mm	26	DWO 2710420	Radial Redirected ERA20 Cool Thru	16
DWO 0660220	0-180 Adj.Angle ERA20 H=47.5mm, Cool Thru*	26	DWO 3490232	Radial ER32 Cool Thru*	15
DWO 0660316	0-180 Adj.Angle Geared-Up 1:2 ERA16	28	DWO 3490425	Radial ERA25 Cool Thru*	15
DWO 0660416	0-180 Adj.Angle Geared-Up 1:2 ERA16 Cool Thru*	28	DWO 3490432	Radial ERA32 Cool Thru*	15
DWO 0661120	0-180 Adj.Angle ERA20 H=83mm	27	DWO 3530325	Radial ±30° Adj. Angle ERA25	17
DWO 0661220	0-180 Adj.Angle ERA20 H=83mm, Cool Thru*	27	DWO 3640240	Radial MTSK-40 Driven Tool Cool Thru	15
DWO 0661316	0-180 Adj.Angle Geared-Up 1:2 H=83mm	29	DWO 3804010	Axial Single Static Tool Capto C4 Right Hand	34
DWO 0661416	0-180 Adj.Angle Geared-Up 1:2 H=83mm, Cool Thru*	29	DWO 3804010LC	Axial Single Static Tool Capto C4 Left Hand	34
DWO 0665120	0-180 Adj. Angle ERA20 with Digital Display	26	DWO 3842500	Radial Single Static Tool 25mm	32
DWO 0665220	0-180 Adj. Angle ERA20 with Digital Display Cool Thru*	26	DWO 3842540	Radial Single Static Tool 1"	32
DWO 0665316	0-180 Adj. Angle ERA16 Geared-Up with Digital Display	28	DWO 3931225	Axial Geared-Up 1:2 Opposite Face ERA25+ERA25	22
DWO 0665416	0-180 Adj. Angle ERA16 Geared-Up with Digital Display Cool Thru*	28	K		
DWO 0666120	0-180 Adj. Angle ERA20 with Digital Display	27	KIT 1000001	Plug for 32mm or 1 1/4" BBH to Make Cool Thru	12
DWO 0666220	0-180 Adj. Angle ERA20 with Digital Display Cool Thru*	27	KIT 1000002	Plug for 50mm or 2" BBH to Make Cool Thru	33
DWO 0666316	0-180 Adj. Angle ERA16 Geared-Up with Digital Display	29	KIT 1000005	Plug for 20mm or 3/4" BBH to Make Cool Thru	13
DWO 0666416	0-180 Adj. Angle ERA16 Geared-Up with Digital Display Cool Thru*	29	KIT 1000006	Plug for 25mm or 1" BBH to Make Cool Thru	12
DWO 0780140	Axial MTSK-40 H=70mm	19	KIT 1000006	Plug for 25mm or 1" BBH to Make Cool Thru	13
DWO 0780240	Axial MTSK-40 H=70mm Cool Thru*	19	KIT 1000018	Plug for 40mm BBH to Make Cool Thru	12
			M		
			MTSK40A02	MTSK-40 Adaptor ER32	35
			MTSK40A03	MTSK-40 Adaptor ER25	35
			MTSK40A05	MTSK-40 Adaptor ER16	35
			MTSK40A06	MTSK-40 Adaptor ER16	35
			MTSK40A07	MTSK-40 Adaptor ER16	35
			MTSK40A08	MTSK-40 Adaptor ER11	35

Table of Contents

Part Number Index

MTSK40A09	MTSK-40 Adaptor ER11	35	NKM0610240	Axial Driven Tool ER40 Cool Thru*	3
MTSK40B02	MTSK-40 Adaptor ERA25	35	NKM0612219	Axial Driven Tool Ø22x19	3
MTSK40B03	MTSK-40 Adaptor ERA20	35	NKM0740132	Axial Driven Tool ER32	4
MTSK40C02	MTSK-40 Adaptor Mill 16x17	36	NKM0740140	Axial Driven Tool ER40	4
MTSK40C03	MTSK-40 Adaptor Mill 3/4"	36	NKM0740232	Axial Driven Tool ER32 Cool Thru*	4
MTSK40C04	MTSK-40 Adaptor Mill 22x19	36	NKM0740240	Axial Driven Tool ER40 Cool Thru*	4
MTSK40C05	MTSK-40 Adaptor Mill 27x21	36	NKM0740716	Axial Driven Tool Weldon 16	4
MTSK40D01	MTSK-40 Adaptor Weldon 6	36	NKM0740816	Axial Driven Tool Weldon 16 Cool Thru*	4
MTSK40D02	MTSK-40 Adaptor Weldon 8	36	NKM0752132	Radial Geared-Down 2:1 Redirected in Z ERA32	1
MTSK40D03	MTSK-40 Adaptor Weldon 10	36	NKM0810120	0-180° Adj. Angle ERA20	6
MTSK40D04	MTSK-40 Adaptor Weldon 12	36	NKM0810220	0-180° Adj. Angle ERA20 Cool Thru*	6
MTSK40D06	MTSK-40 Adaptor Weldon 16	36	NKM0810316	0-180° Adj. Angle Geared-Up 1:2 ERA16	7
MTSK40D07	MTSK-40 Adaptor Weldon 20	36	NKM0810416	0-180° Adj. Angle Geared-Up 1:2 ERA16 Cool Thru*	7
MTSK40D11	MTSK-40 Adaptor Weldon 1/4"	36	NKM0815120	0-180° Adj. Angle ERA20 with Digital Display	6
MTSK40D12	MTSK-40 Adaptor Weldon 5/16"	36	NKM0815220	0-180° Adj. Angle ERA20 with Digital Display Cool Thru*	6
MTSK40D13	MTSK-40 Adaptor Weldon 3/8"	36			
MTSK40D14	MTSK-40 Adaptor Weldon 1/2"	36	NKM0815316	0-180° Adj. Angle Geared-Up 1:2 ERA16 with Digital Display	7
MTSK40D21	MTSK-40 Adaptor Weldon 6	36			
MTSK40D24	MTSK-40 Adaptor Weldon 10	36	NKM0815416	0-180° Adj. Angle Geared-Up 1:2 ERA16 with Digital Display Cool Thru*	7
MTSK40D25	MTSK-40 Adaptor Weldon 12	36			
MTSK40F01	MTSK-40 Adaptor Mil 1/2"	36	NKM0852132	Radial Geared-Up 1:2 Redirected in Z ERA25	2
MTSK40G03	MTSK-40 Adaptor MR25	36	NKM0854225	Radial Geared-Up 1:2 Redirected in Z ERA25 Cool Thru*	2
MTSK40H01	MTSK-40 Adaptor Morse 1	36			
MTSK40H02	MTSK-40 Adaptor Morse 2	36	NKM0860325	Axial Geared-Up 1:2 ERA25	5
MTSK40T00	MTSK-40 Cover Plug	36	NKM0860425	Axial Geared-Up 1:2 ERA25 Cool Thru*	5
N			NKM0874010	Axial Single Static Tool Capto C4 Right Version	14
NKM0280125	Radial Driven Tool ER25	1	NKM0874010LC	Axial Single Static Tool Capto C4 Left Version	14
NKM0280132	Radial Driven Tool ER32	1	NKM0940100	Broaching/Slotting Driven Tool 50mm Stroke	9
NKM0280140	Radial Driven Tool ER40	1	NKM0940200	Broaching/Slotting Driven Tool 25mm Stroke	9
NKM0280225	Radial Driven Tool ERA25 Cool Thru*	1	NKM1064010	Axial Rear-Set Boring Static Capto C4 Right Version	14
NKM0280232	Radial Driven Tool ERA32 Cool Thru*	1	NKM1064010LC	Axial Rear-Set Boring Static Capto C4 Left Version	14
NKM0280332	Radial Driven Tool ER32 Cool Thru*	1	NKM1120325	Radial Geared-Up 1:2 Single Side Twin ERA25	2
NKM0281617	Radial Driven Tool Ø16x17	1	NKM1132000	Axial 3+3 Position BBH: 20mm	13
NKM0281919	Radial Driven Tool Ø3/4"x3/4"	1	NKM1150132	Radial Blade Holder with Blade Kit	11
NKM0282219	Radial Driven Tool Ø22x19	1	NKM1160132L	Radial Blade Holder Cool Thru (Left Hand)	11
NKM0282519	Radial Driven Tool Ø1"x19	1	NKM1160132R	Radial Blade Holder Cool Thru (Right Hand)	11
NKM0282721	Radial Driven Tool Ø27x21	1	NKM1170100	Axial MTSK-40 for Power Skiving	8
NKM0290125	Axial Driven Tool ERA25	3	NKM1440140	Axial MTSK-40 Driven Tool	4
NKM0290132	Axial Driven Tool ERA32	3	NKM1440240	Axial MTSK-40 Driven Tool Cool Thru*	4
NKM0290140	Axial Driven Tool ER40	3			
NKM0290225	Axial Driven Tool ERA25 Cool Thru*	3			
NKM0290232	Axial Driven Tool ERA32 Cool Thru*	3			
NKM0290240	Axial Driven Tool ER40 Cool Thru*	3			
NKM0292219	Axial Driven Tool Ø22x19	3			
NKM0302500	Axial Single BBH: 25mm	12			
NKM0302540	Axial Single BBH: 1"	12			
NKM0303200	Axial Single BBH: 32mm	12			
NKM0304000	Axial Single BBH: 40mm	12			
NKM0331100	Driven Gear Hobb 1:1	8			
NKM0332100	Driven Gear Hobb Geared-Down 2:1	8			
NKM0361905	Radial Single Side Twin Static Tool 3/4"	10			
NKM0362000	Radial Single Side Twin Static Tool 20mm	10			
NKM0412000	Radial Single Static Tool 20mm	10			
NKM0412500	Radial Single Static Tool 25mm	10			
NKM0422000	Radial Double Static Tool 20mm	10			
NKM0422500	Radial Double Static Tool 25mm	10			
NKM0432000	Axial Single Static Tool 20mm	12			
NKM0432500	Axial Single Static Tool 25mm	12			
NKM0442500	Axial Double BBH: 25mm	13			
NKM0442540	Axial Double BBH: 1"	13			
NKM0600232	Axial Opposite Face ER32+ER32	5			
NKM0600240	Axial Opposite Face ER40+ER40	5			
NKM0610125	Axial Driven Tool ERA25	3			
NKM0610132	Axial Driven Tool ERA32	3			
NKM0610140	Axial Driven Tool ER40	3			
NKM0610225	Axial Driven Tool ERA25 Cool Thru*	3			
NKM0610232	Axial Driven Tool ERA32 Cool Thru*	3			