

DRIVEN and STATIC TOOLING
For
MURATEC



10139 BERGIN RD.
HOWELL, MI 48843
PHONE : 877-91-TOOLS (810-632-4446)
FAX: 877-92-TOOLS (810-632-4467)
EMAIL: info@mdtooling.com
WEBSITE: www.mdtooling.com

Live Tooling



M. T. Marchetti, a major live tool manufacturer in northern Italy, is a leader in live tool technology. The formula is simple. Use only the best angular contact high-speed bearings available. Add to this an exacting tolerances for all ground shafts, gears and bearing pocket features. Next, develop a sealed system that **will not** allow any contamination from chips or coolant.

Top this all off with a superior design and you end up with a live tool that is more rigid, faster and will last longer. **We back this up with a 2-Year factory warranty.**

Our Live Tool Warranty

Our tooling will give years of service in the most demanding applications. The superior design and rugged construction has proven this over the last 12 years. The reliability of our tools allows us to provide a 2-year factory warranty, for non-wear components.

MD Tooling will repair any defective tool holders for a period of 2 years from the date of purchase.

Product Range

We have the largest range of live tooling available for most major machine tool manufactures.

Our available products include an extensive line of standard live tooling as well as specialty tool holders such as 0-180 adjustable angle tool holders, gear hobbers, and even worm gear generators. Our product range includes geared up holders to 60,000 RPM and are engineered for 1,000 PSI coolant through.

We are an industry leader in providing complete tooling solutions with hundreds of static tool options as well.

Technical Support

Here at MD Tooling we have a full technical support department with over 35 years of CNC experience.

Our highly qualified staff can help with part processing, tooling up a job from a blue print and even assist with part programming. Applications Engineers are always available by phone to answer any questions you may have about our tooling or any other CNC related issue.

Stock and Replenishment

MD Tooling maintains an extensive inventory of tooling in our warehouse in Michigan. Our current "fill" rate on orders is 93% from our stock in Michigan for same day shipping.

Should you require a non-stock item, our manufacturer, M.T. Marchetti also maintains a large inventory in Italy. Tooling can be obtained in as little as 3-5 business days.

Shipping

MD Tooling realizes that when you need tooling, often you can't wait until the next day. We process orders and ship from available stock right up until 4PM EST to make certain we get your tooling solutions to you as quickly as possible.

We regularly ship throughout the day via UPS, FedEx or any other carrier that a customer requests.



10139 Bergin Road
Howell, MI 48843
Phone: (810) 632-4446
Fax: (810) 632-4467
Email: info@mdtooling.com
Web: www.mdtooling.com

- Fast, Friendly, Reliable Service!
- Quality tooling at highly competitive pricing.
- 2-Year Warranty on all live tools.
- Extensive inventory. We currently ship over 93% of all orders same day.
- In-house repair services available.
- If a warranty tool needs to be returned for inspection, service or repair, loaner tools are available to keep your machine tool production up and running.
- More specialty tool holders than any other manufacturer.
- Custom tool holders available.
- All available tooling may not be shown in this catalog. If you can't find the holder you're looking for, please contact our office for assistance.



Table of Contents

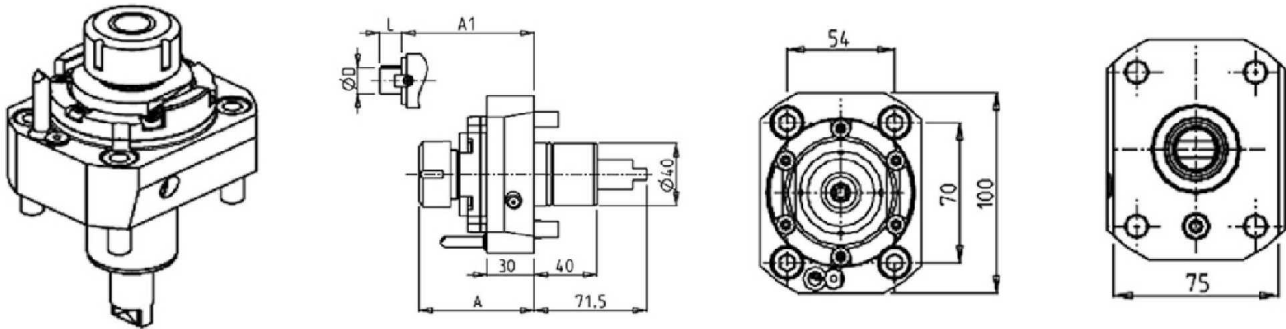
Categorized Listing

MT12 - MT200	1		
DRIVEN	1		
RADIAL DRIVEN TOOL	1	RADIAL SINGLE STATIC TOOL	24
AXIAL DRIVEN TOOL H=100mm	2	RADIAL SINGLE SIDE TWIN STATIC TOOL	24
AXIAL DRIVEN TOOL FOR INTERNAL POLYGON MAKING H=100mm	2	RADIAL DOUBLE STATIC TOOL	24
AXIAL OPPOSITE FACE TWIN DRIVEN TOOL H=100mm	3	RADIAL DOUBLE SIDE TWIN STATIC TOOL	25
(0-180) ADJUSTABLE ANGLE DRIVEN TOOL H=74mm	4	RADIAL BLADE HOLDER WITH BLADE KIT	25
DRIVEN GEAR HOBBER	5	RADIAL BLADE HOLDER WITH INTERNAL COOLANT - BLADE KIT NOT INCLUDED	25
STATIC	6	AXIAL SINGLE STATIC TOOL	26
RADIAL SINGLE STATIC TOOL	6	AXIAL SINGLE BORING BAR HOLDER H=65mm	26
RADIAL SINGLE SIDE TWIN STATIC TOOL	6	AXIAL SINGLE BORING BAR HOLDER H=60mm	26
RADIAL DOUBLE SIDE TWIN STATIC TOOL	6	AXIAL SINGLE BORING BAR HOLDER H=70mm	27
RADIAL BLADE HOLDER WITH BLADE KIT	7	AXIAL SINGLE BORING BAR HOLDER H=75mm	27
RADIAL BLADE HOLDER WITH INTERNAL COOLANT - BLADE KIT NOT INCLUDED	7	AXIAL DOUBLE BORING BAR HOLDER 2 POSITIONS IN Y H=65mm	27
AXIAL SINGLE STATIC TOOL	8	ACCESSORIES	28
AXIAL SINGLE BORING BAR HOLDER H=95mm	8	DRIVEN	28
AXIAL DOUBLE BORING BAR HOLDER 2 POSITIONS IN Y H=125mm	8	MTSK-32 ER ADAPTORS	28
		MTSK-32 MILL ADAPTORS	28
MD60 - MD120	9		
DRIVEN	9		
RADIAL DRIVEN TOOL	9		
RADIAL GEARED-UP 1:3 DRIVEN TOOL REDIRECTED IN Z BY 90mm	9		
AXIAL DRIVEN TOOL H=100mm	10		
AXIAL GEARED-UP 1:2 DRIVEN TOOL H=100mm	10		
(0-180) ADJUSTABLE ANGLE DRIVEN TOOL H=74mm	11		
STATIC	12		
RADIAL SINGLE STATIC TOOL	12		
RADIAL BLADE HOLDER WITH BLADE KIT	12		
RADIAL BLADE HOLDER WITH INTERNAL COOLANT - BLADE KIT NOT INCLUDED	12		
AXIAL SINGLE STATIC TOOL	13		
AXIAL SINGLE BORING BAR HOLDER H=95mm	13		
MT100 15ST.	14		
DRIVEN	14		
RADIAL REINFORCED DRIVEN TOOL	14		
QUICK CHANGE RADIAL MTSK DRIVEN TOOL	14		
See Accessories for MTSK Adaptors	14		
RADIAL DRIVEN TOOL REDIRECTED IN Z BY 36mm	15		
RADIAL GEARED-DOWN 2:1 DRIVEN TOOL REDIRECTED IN Z BY 43mm	15		
RADIAL GEARED-DOWN 2:1 DRIVEN TOOL REDIRECTED IN Z BY 60mm	16		
RADIAL GEARED-DOWN 3:1 DRIVEN TOOL REDIRECTED IN Z BY 60mm	16		
RADIAL GEARED-UP 1:2 DRIVEN TOOL REDIRECTED IN Z BY 36mm	17		
RADIAL SINGLE SIDE TWIN HEAD DRIVEN TOOL IN Y	17		
AXIAL DRIVEN TOOL H=60mm	18		
QUICK CHANGE AXIAL MTSK DRIVEN TOOL H=60mm	18		
See Accessories for MTSK Adaptors	18		
AXIAL GEARED-UP 1:2 DRIVEN TOOL	19		
AXIAL GEARED-UP 1:3 REAR-SET DRIVEN TOOL H=65mm	19		
AXIAL DRIVEN TOOL FOR INTERNAL POLYGON-MAKING H=60mm	20		
See Accessories for Mill Heads	20		
AXIAL OPPOSITE FACE TWIN DRIVEN TOOL H=60mm	20		
AXIAL SINGLE SIDE TWIN HEAD DRIVEN TOOL IN Y	21		
(0-180) ADJUSTABLE ANGLE DRIVEN TOOL	21		
0-180° ADJUSTABLE ANGLE DRIVEN TOOL H=55mm	22		
DRIVEN GEAR HOBBER	22		
BROACHING/SLOTING DRIVEN TOOL 25mm STROKE H=65mm	23		
STATIC	24		

MT12 - MT200

DRIVEN

RADIAL DRIVEN TOOL



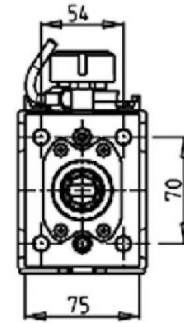
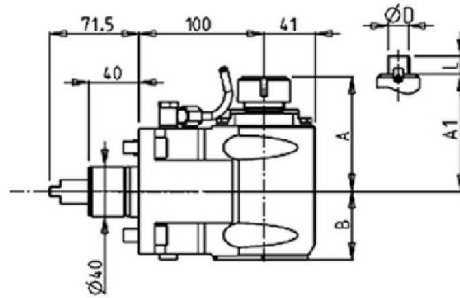
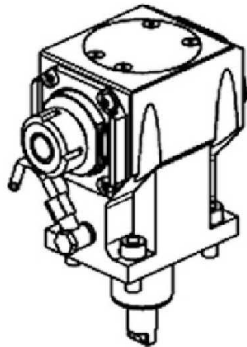
Part Number	Description	Spindle	I	RPM	Cool Thru	Ext Cool	A	A1	D	L
MUR0050125	Radial Driven Tool ER25	ER25	1:1	6000		X	73.16			
MUR0050225	Radial Driven Tool ER25 Cool Thru*	ER25	1:1	6000	X	X	88.16			
MUR0050325	Radial Driven Tool ERA25	ERA25	1:1	6000		X	59.5			
MUR0050425	Radial Driven Tool ERA25 Cool Thru*	ERA25	1:1	6000	X	X	74.5			
MUR0050132	Radial Driven Tool ER32	ER32	1:1	6000		X	76.16			
MUR0050232	Radial Driven Tool ER32 Cool Thru*	ER32	1:1	6000	X	X	91.16			
MUR0050516	Radial Driven Tool 16x17mm	16x17	1:1	6000		X		54.5	16	17

*Coolant Thru tools are designed for 400 psi MAX.
They require 5 Micron Filtration and **CANNOT** be run dry.

MT12 - MT200

DRIVEN

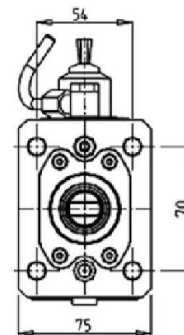
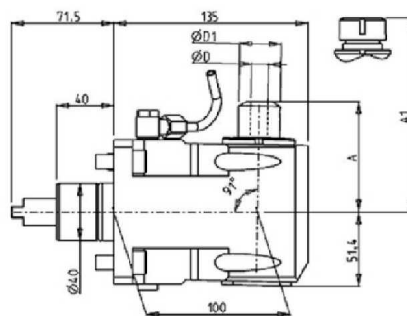
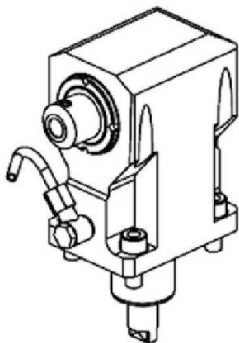
AXIAL DRIVEN TOOL H=100mm



Part Number	Description	Spindle	I	RPM	Reversible	Cool Thru	Ext Cool	A	A1	B
MUR0030125	Axial Driven Tool ER25	ER25	1:1	6000	X		X	91.16	54.5	
MUR0030225	Axial Driven Tool ER25 Cool Thru*	ER25	1:1	6000	X	X	X	91.16	65.5	
MUR0030325	Axial Driven Tool ERA25	ERA25	1:1	6000	X		X	65	54.5	
MUR0030425	Axial Driven Tool ERA25 Cool Thru*	ERA25	1:1	6000	X	X	X	65	65.5	
MUR0030132	Axial Driven Tool ER32	ER32	1:1	6000	X		X	93.66	54.5	
MUR0030232	Axial Driven Tool ER32 Cool Thru*	ER32	1:1	6000	X	X	X	93.66	65.5	
MUR0030140	Axial Driven Tool ER40	ER40	1:1	6000	X		X	98.16	54.5	
MUR0030240	Axial Driven Tool ER40 Cool Thru*	ER40	1:1	6000	X	X	X	98.16	65.5	
MUR0030516	Axial Driven Tool 16x17mm	16x17	1:1	6000	X		X		67.5	54.5
MUR0030522	Axial Driven Tool 22x19mm	22x19	1:1	6000	X		X		67.5	54.5
MUR0030527	Axial Driven Tool 27x21mm	27x21	1:1	6000	X		X		70	54.5

* Coolant Thru tools are designed for 1000 psi.
They require 5 Micron Filtration and **CANNOT** be run dry.

AXIAL DRIVEN TOOL FOR INTERNAL POLYGON MAKING H=100mm



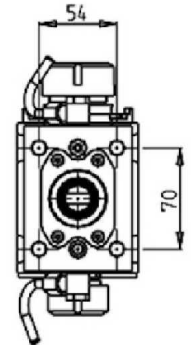
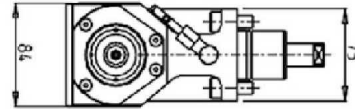
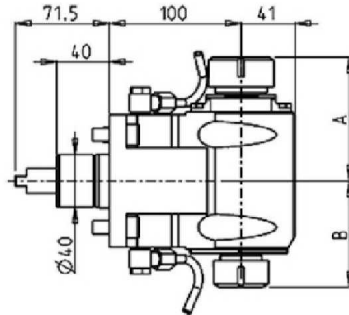
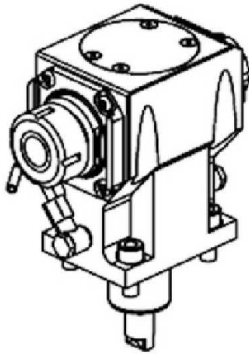
Part Number	Description	Spindle	I	RPM	Reversible	Ext Cool	A	A1	D	D1
MUR0269125	Axial Driven Tool for Internal Polygon ER25	ER25	1:1	6000	X	X		82.4		
MUR0269108	Axial Driven Tool for Internal Polygon Weldon 8	Weldon 8	1:1	6000	X	X	76.5		8	29
MUR0269110	Axial Driven Tool for Internal Polygon Weldon 10	Weldon 10	1:1	6000	X	X	76.5		10	29
MUR0269112	Axial Driven Tool for Internal Polygon Weldon 12	Weldon 12	1:1	6000	X	X	76.5		12	29
MUR0269116	Axial Driven Tool for Internal Polygon Weldon 16	Weldon 16	1:1	6000	X	X	73.5		16	32

MT12 - MT200

DRIVEN

AXIAL OPPOSITE FACE TWIN DRIVEN TOOL H=100mm

These holders will ONLY fit the MT200



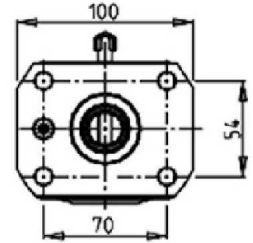
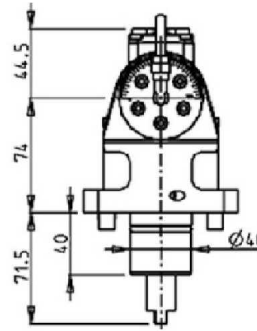
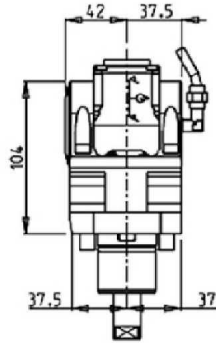
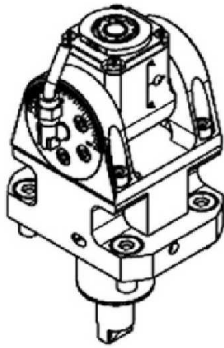
Part Number	Description	Spindle	I	RPM	Reversible	Ext Cool	A	B
MUR0283225	Axial Opposite Face ER32+ER25	ER32+ER25	1:1	6000	X	X	93.66	80.16
MUR0282520	Axial Opposite Face ERA25+ERA20	ERA25+ERA20	1:1	6000	X	X	65	55.5

MT12 - MT200

DRIVEN

(0-180) ADJUSTABLE ANGLE DRIVEN TOOL H=74mm

It is not possible to make machining operations at the center of the part with tool oriented at 0° or at 180°



Part Number	Description	Spindle	I	RPM	Reversible	Cool Thru	Ext Cool
MUR0070116	(0-180) Adj. Angle Driven Tool ERA16	ERA16	1:1	6000	X		X
MUR0070216	(0-180) Adj. Angle Driven Tool ERA16 Cool Thru*	ERA16	1:1	6000	X	X	X

* Coolant Thru tools are designed for 1000 psi.
They require 5 Micron Filtration and **CANNOT** be run dry.

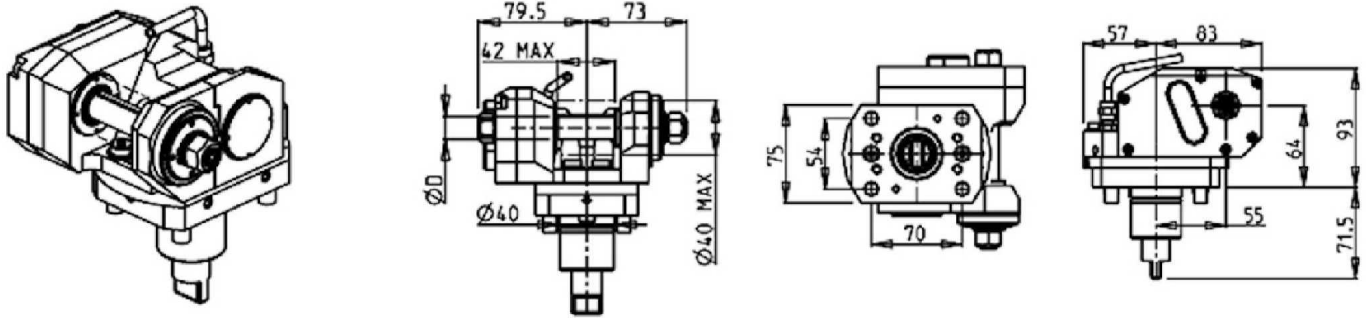
Note :

Wrenches are provided with the purchase of Specialty Toolholders

MT12 - MT200

DRIVEN

DRIVEN GEAR HOBBER

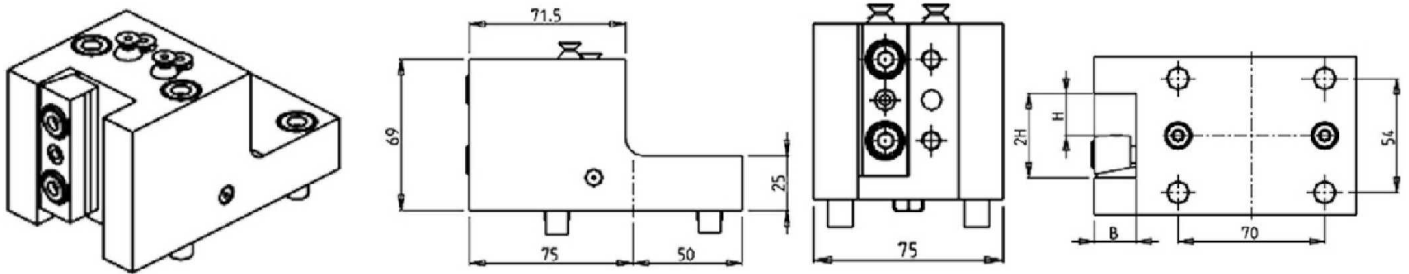


Part Number	Description	I	MAX RPM	Ext Cool	D
MUR0211108	Driven Gear Hobb 1:1 D=8mm	1:1	6000	X	8
MUR0211110	Driven Gear Hobb 1:1 D=10mm	1:1	6000	X	10
MUR0211113	Driven Gear Hobb 1:1 D=13mm	1:1	6000	X	13
MUR0211116	Driven Gear Hobb 1:1 D=16mm	1:1	6000	X	16
MUR0211155	Driven Gear Hobb 1:1 D=1/2"	1:1	6000	X	1/2"
MUR0212108	Driven Gear Hobb Geared-Down 2:1 D=8mm	2:1	3000	X	8
MUR0212110	Driven Gear Hobb Geared-Down 2:1 D=10mm	2:1	3000	X	10
MUR0212113	Driven Gear Hobb Geared-Down 2:1 D=13mm	2:1	3000	X	13
MUR0212116	Driven Gear Hobb Geared-Down 2:1 D=16mm	2:1	3000	X	16
MUR0212155	Driven Gear Hobb Geared-Down 2:1 D=1/2"	2:1	3000	X	1/2"

MT12 - MT200

STATIC

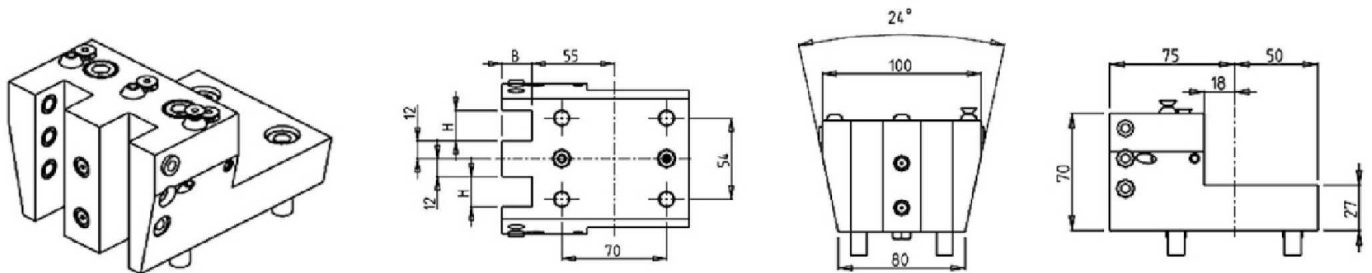
RADIAL SINGLE STATIC TOOL



Part Number	Description	# of Tools	Cool Thru	Ext Cool	Dimensions	B	H
MUR0162000	Radial Single Static Tool 20mm	1		X	mm	20	20
MUR0162010	Radial Single Static Tool 20mm Cool Thru*	1	X	X	mm	20	20

RADIAL SINGLE SIDE TWIN STATIC TOOL

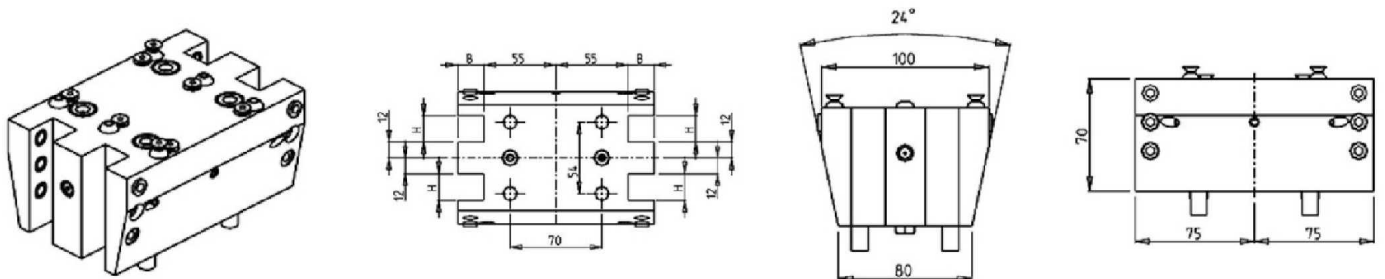
This holder will ONLY fit the MT200



Part Number	Description	Reversible	Ext Cool	Dimensions	B	H
MUR0292000	Radial Single Side Twin $\varnothing 20$ mm	X	X	mm	20	20

RADIAL DOUBLE SIDE TWIN STATIC TOOL

This holder will ONLY fit the MT200

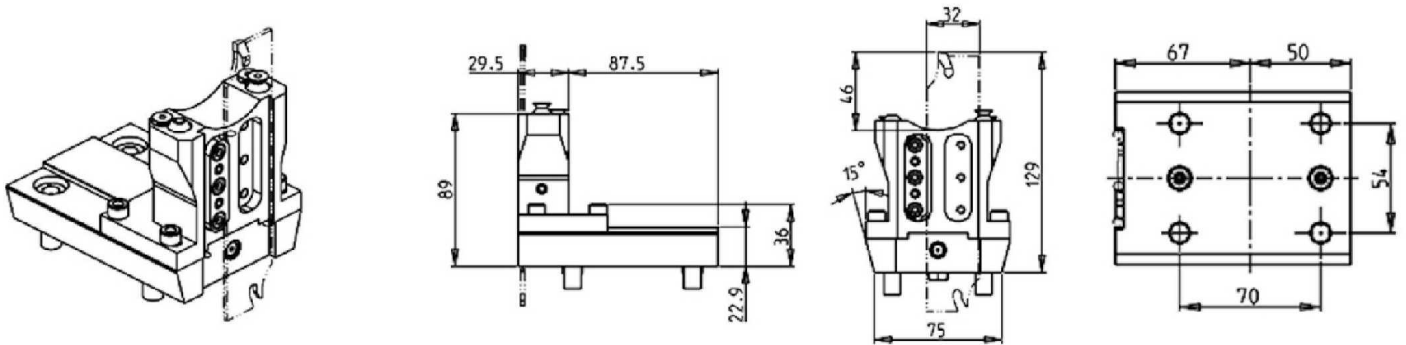


Part Number	Description	Reversible	Ext Cool	Dimensions	B	H
MUR0302000	Radial Double Side Twin $\varnothing 20$ mm	X	X	mm	20	20

MT12 - MT200

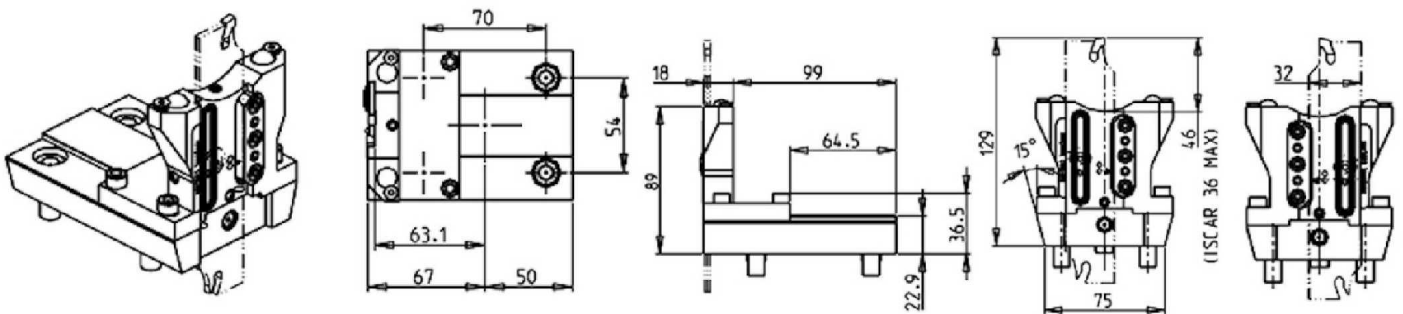
STATIC

RADIAL BLADE HOLDER WITH BLADE KIT



Part Number	Description	# of Tools	Reversible	Ext Cool
MUR0190132	Radial Blade Holder with Blade Kit	1	X	X
BLADEKIT	Blade Kit: 1 Blade, 10 Inserts			

RADIAL BLADE HOLDER WITH INTERNAL COOLANT - BLADE KIT NOT INCLUDED

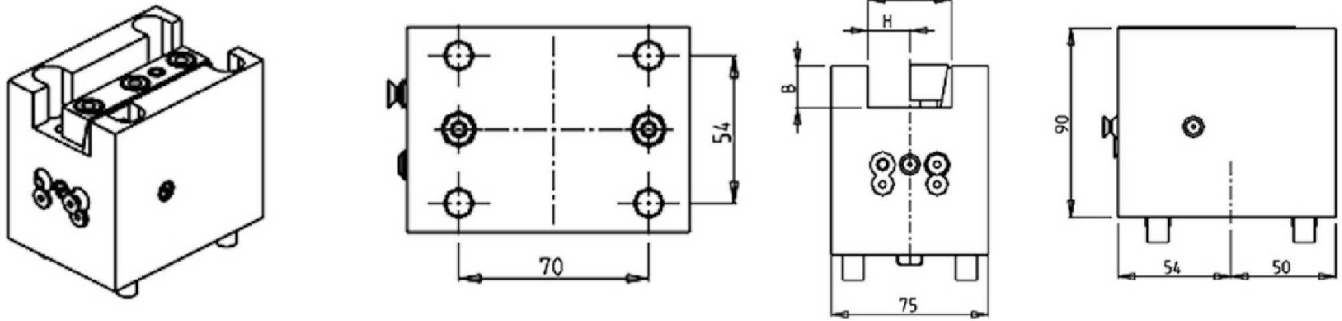


Part Number	Description	# of Tools	Ext Cool	Cool Thru
MUR0200132R	Radial Blade Holder Cool Thru (Right Hand)	1	X	X
MUR0200132L	Radial Blade Holder Cool Thru (Left Hand)	1	X	X
COOL THRU BLADEKIT	Blade Kit: 1 Blade, 10 Inserts			

MT12 - MT200

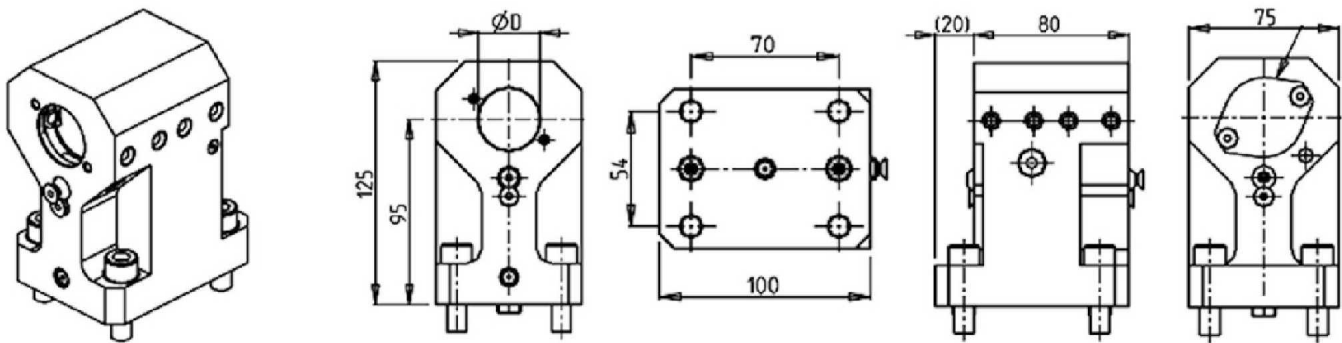
STATIC

AXIAL SINGLE STATIC TOOL



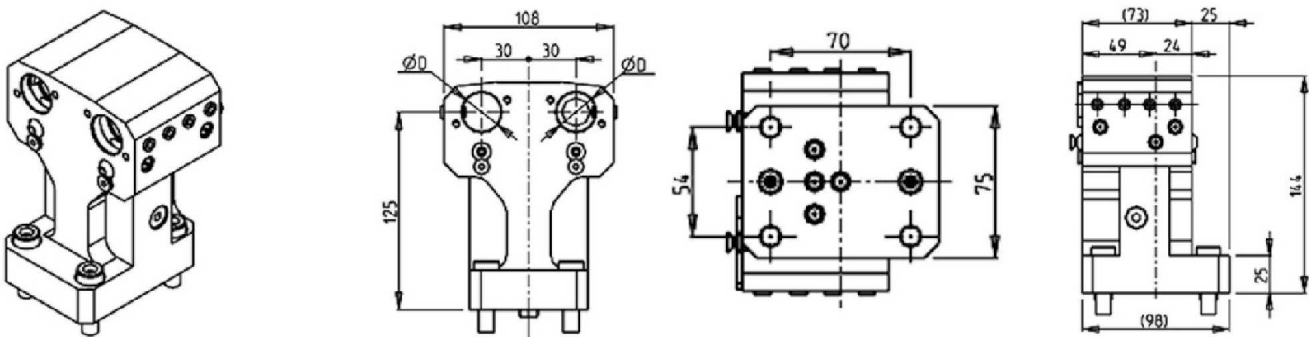
Part Number	Description	# of Tools	Cool Thru	Ext Cool	Dimensions	B	H
MUR0172000	Axial Single Static Tool 20mm	1		X	mm	20	20
MUR0172010	Axial Single Static Tool 20mm Cool Thru*	1	X	X	mm	20	20

AXIAL SINGLE BORING BAR HOLDER H=95mm



Part Number	Description	# of Tools	Reversible	Cool Thru	Ext Cool	Dimensions	D
MUR0183200	Axial Single BBH 32mm	1	X	X	X	mm	32
KIT1000001	Plug for 32mm or 1-1/4" BBH to Make Cool Thru						

AXIAL DOUBLE BORING BAR HOLDER 2 POSITIONS IN Y H=125mm

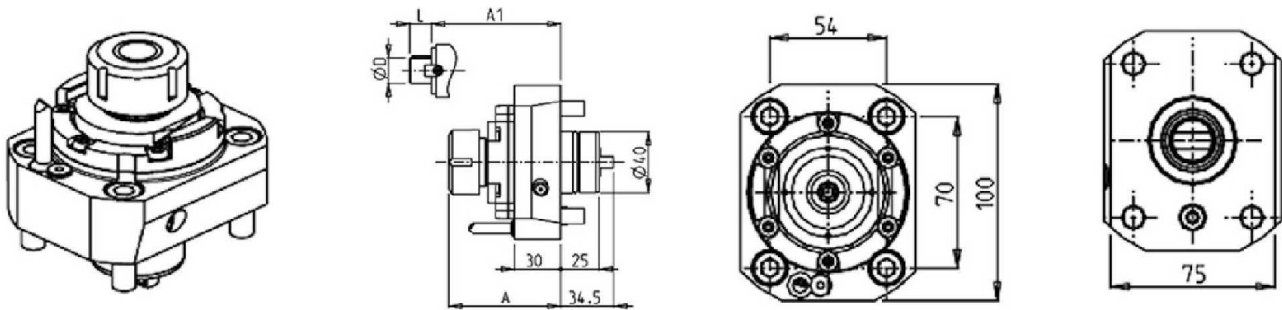


Part Number	Description	# of Tools	Reversible	Cool Thru	Ext Cool	Dimensions	D
MUR0312500	Axial Double BBH 2 Positions in Y \varnothing 25mm	2	X	X	X	mm	25
KIT1000006	Plug for 25mm BBH to Make Cool Thru						

MD60 - MD120

DRIVEN

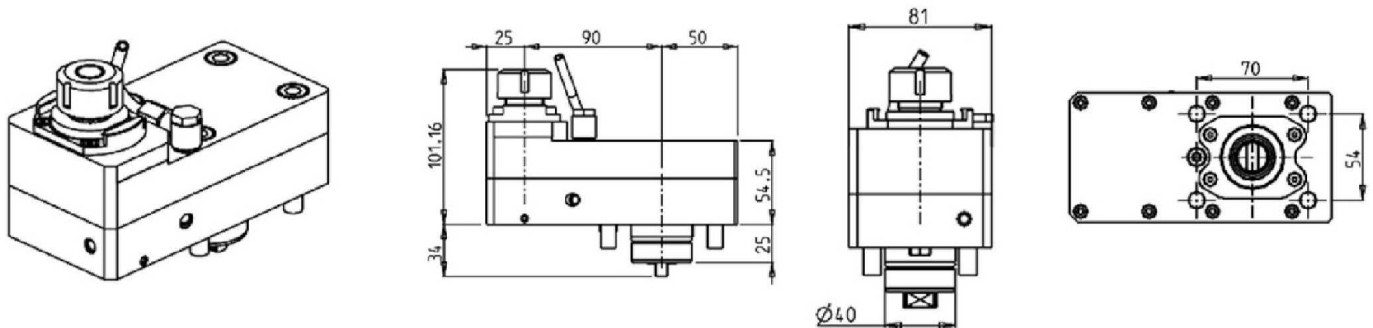
RADIAL DRIVEN TOOL



Part Number	Description	Spindle	I	RPM	Cool Thru	Ext Cool	A	A1	D	L
MUR0040125	Radial Driven Tool ER25	ER25	1:1	6000		X	73.16			
MUR0040225	Radial Driven Tool ER25 Cool Thru*	ER25	1:1	6000	X	X	88.16			
MUR0040325	Radial Driven Tool ERA25	ERA25	1:1	6000		X	59.5			
MUR0040425	Radial Driven Tool ERA25 Cool Thru*	ERA25	1:1	6000	X	X	74.5			
MUR0040132	Radial Driven Tool ER32	ER32	1:1	6000		X	76.16			
MUR0040232	Radial Driven Tool ER32 Cool Thru*	ER32	1:1	6000	X	X	91.16			
MUR0040516	Radial Driven Tool 16x17mm	16x17	1:1	6000		X		54.5	16	17

*Coolant Thru tools are designed for 400 psi MAX.
They require 5 Micron Filtration and **CANNOT** be run dry.

RADIAL GEARED-UP 1:3 DRIVEN TOOL REDIRECTED IN Z BY 90mm



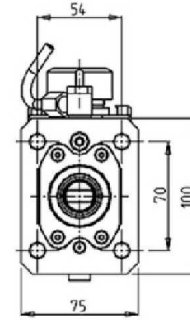
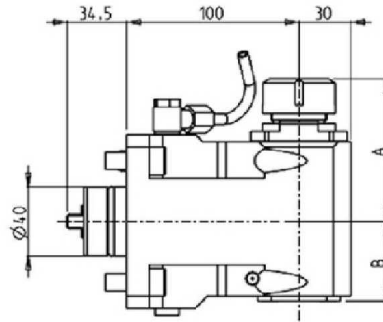
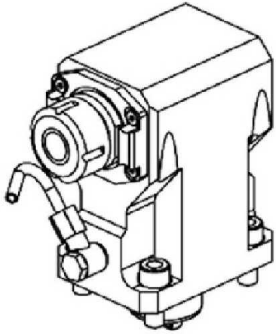
Part Number	Description	Spindle	I	RPM	Cool Thru	Ext Cool
MUR0250120	Radial Geared-Up 1:3 ER20	ER20	1:3	18000		X
MUR0250220	Radial Geared-Up 1:3 ER20 Cool Thru*	ER20	1:3	18000	X	X

* Coolant Thru tools are designed for 1000 psi.
They require 5 Micron Filtration and **CANNOT** be run dry.

MD60 - MD120

DRIVEN

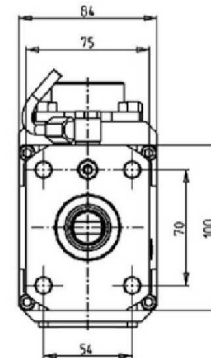
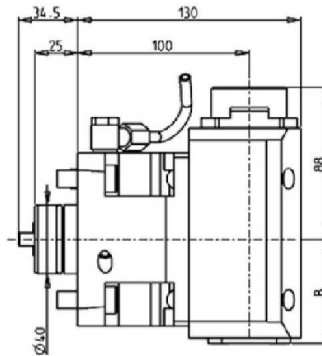
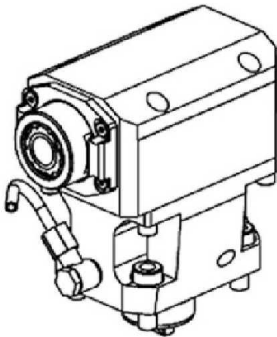
AXIAL DRIVEN TOOL H=100mm



Part Number	Description	Spindle	I	RPM	Cool Thru	Ext Cool	A	B
MUR0080125	Axial Driven Tool ER25	ER25	1:1	6000		X	82.36	46
MUR0080225	Axial Driven Tool ER25 Cool Thru*	ER25	1:1	6000	X	X	82.36	56

* Coolant Thru tools are designed for 1000 psi.
They require 5 Micron Filtration and **CANNOT** be run dry.

AXIAL GEARED-UP 1:2 DRIVEN TOOL H=100mm



Part Number	Description	Spindle	I	RPM	Cool Thru	Ext Cool	B
MUR0150325	Axial Geared-Up 1:2 ERA25	ERA25	1:2	12000		X	60
MUR0150425	Axial Geared-Up 1:2 ERA25 Cool Thru*	ERA25	1:2	12000	X	X	70

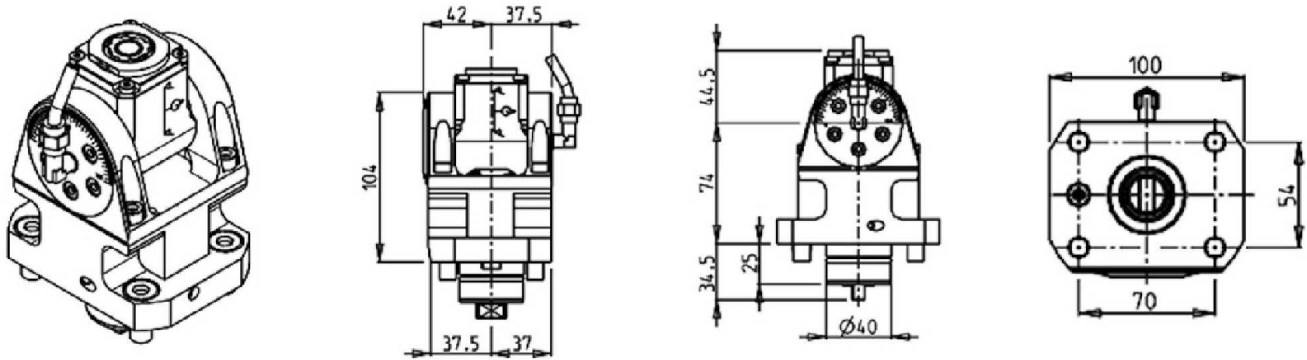
* Coolant Thru tools are designed for 1000 psi.
They require 5 Micron Filtration and **CANNOT** be run dry.

MD60 - MD120

DRIVEN

(0-180) ADJUSTABLE ANGLE DRIVEN TOOL H=74mm

It is not possible to make machining operations at the center of the part with tool oriented at 0° or at 180°



Part Number	Description	Spindle	I	RPM	Reversible	Cool Thru	Ext Cool
MUR0060116	(0-180) Adj. Angle Driven Tool ERA16	ERA16	1:1	6000	X		X
MUR0060216	(0-180) Adj. Angle Driven Tool ERA16 Cool Thru*	ERA16	1:1	6000	X	X	X

* Coolant Thru tools are designed for 1000 psi.
They require 5 Micron Filtration and **CANNOT** be run dry.

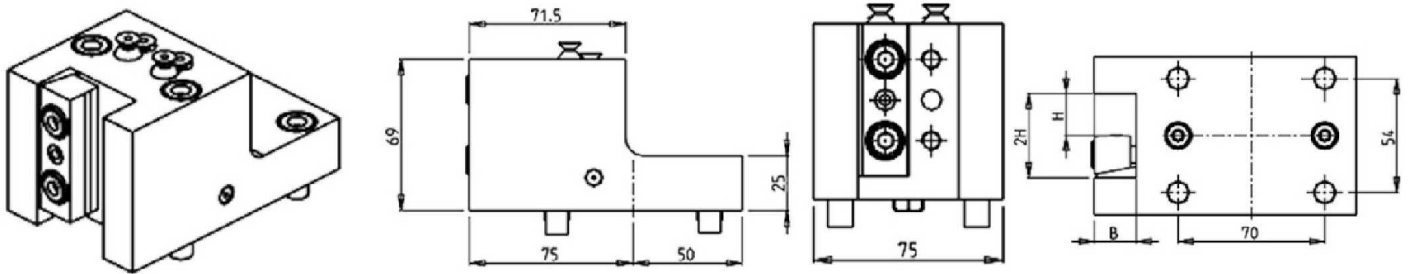
Note :

Wrenches are provided with the purchase of Specialty Toolholders

MD60 - MD120

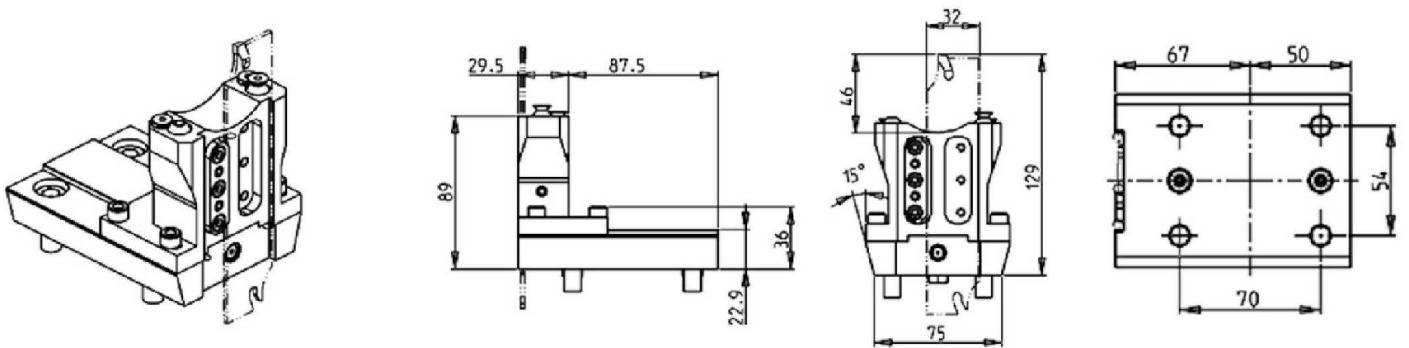
STATIC

RADIAL SINGLE STATIC TOOL



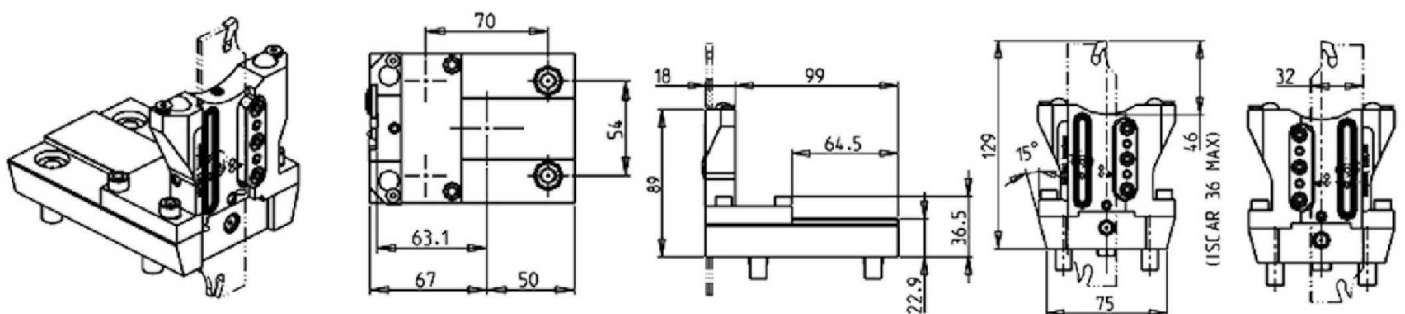
Part Number	Description	# of Tools	Cool Thru	Ext Cool	Dimensions	B	H
MUR0162000	Radial Single Static Tool 20mm	1		X	mm	20	20
MUR0162010	Radial Single Static Tool 20mm Cool Thru*	1	X	X	mm	20	20

RADIAL BLADE HOLDER WITH BLADE KIT



Part Number	Description	# of Tools	Reversible	Ext Cool
MUR0190132	Radial Blade Holder with Blade Kit	1	X	X
BLADEKIT	Blade Kit: 1 Blade, 10 Inserts			

RADIAL BLADE HOLDER WITH INTERNAL COOLANT - BLADE KIT NOT INCLUDED

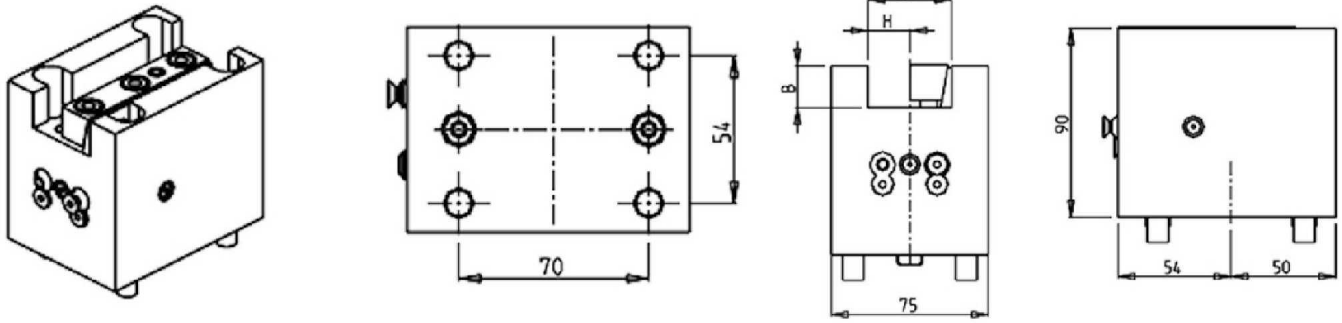


Part Number	Description	# of Tools	Ext Cool	Cool Thru
MUR0200132R	Radial Blade Holder Cool Thru (Right Hand)	1	X	X
MUR0200132L	Radial Blade Holder Cool Thru (Left Hand)	1	X	X
COOL THRU BLADEKIT	Blade Kit: 1 Blade, 10 Inserts			

MD60 - MD120

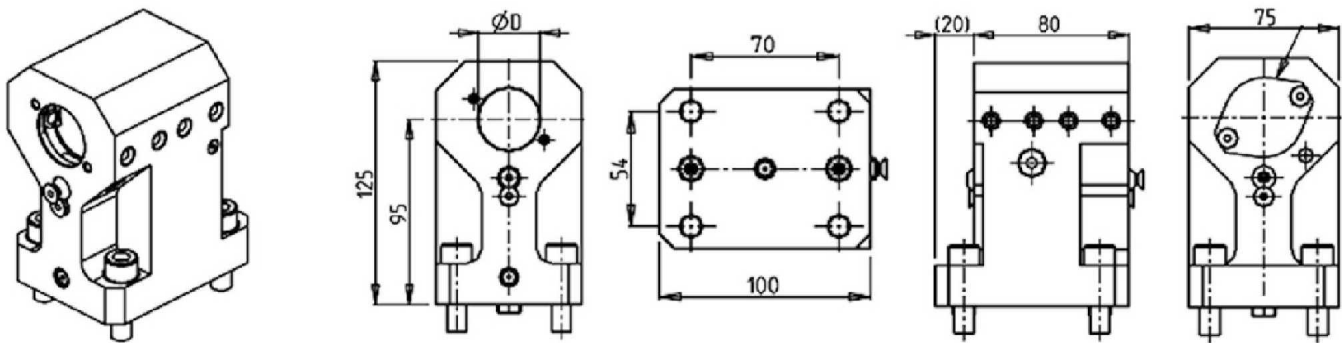
STATIC

AXIAL SINGLE STATIC TOOL



Part Number	Description	# of Tools	Cool Thru	Ext Cool	Dimensions	B	H
MUR0172000	Axial Single Static Tool 20mm	1		X	mm	20	20
MUR0172010	Axial Single Static Tool 20mm Cool Thru*	1	X	X	mm	20	20

AXIAL SINGLE BORING BAR HOLDER H=95mm

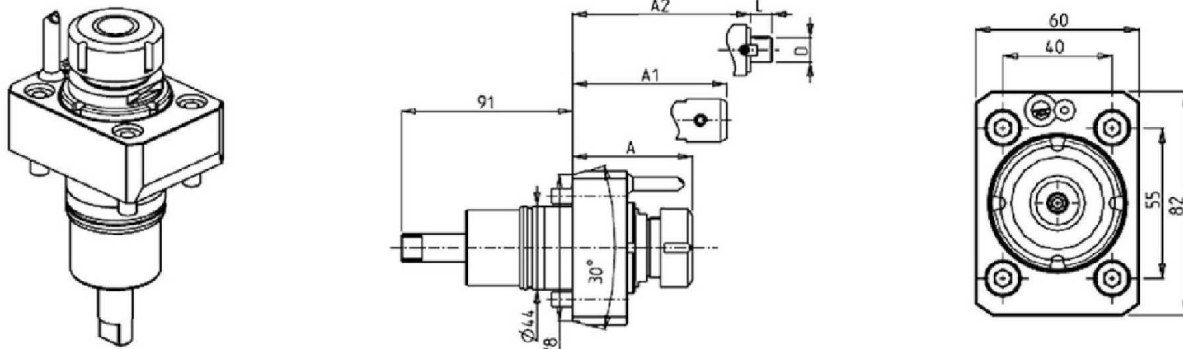


Part Number	Description	# of Tools	Reversible	Cool Thru	Ext Cool	Dimensions	D
MUR0183200	Axial Single BBH 32mm	1	X	X	X	mm	32
KIT1000001	Plug for 32mm or 1-1/4" BBH to Make Cool Thru						

MT100 15ST.

DRIVEN

RADIAL REINFORCED DRIVEN TOOL

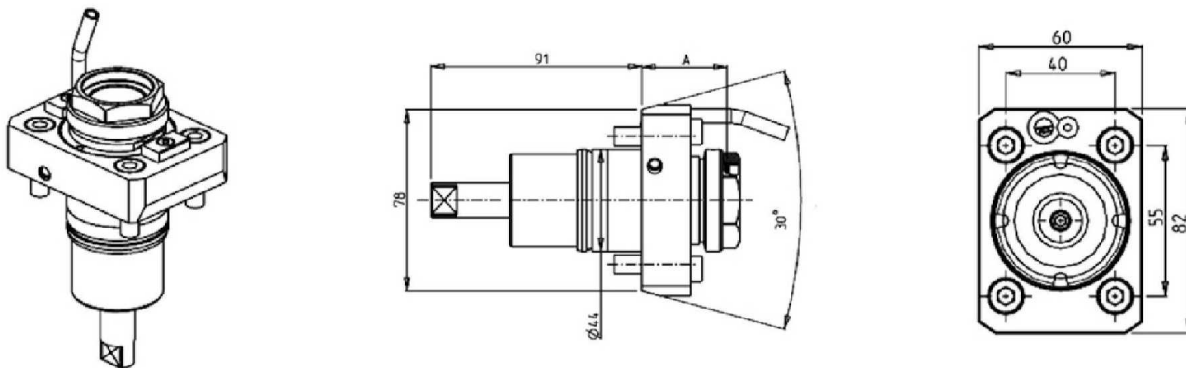


Part Number	Description	Spindle	I	RPM	Cool Thru	Ext Cool	A	A1	A2	D	L
NKM1790320	Radial Driven Tool ERA20	ERA20	1:1	6000		X	50.7				
NKM1790420	Radial Driven Tool ERA20 Cool Thru*	ERA20	1:1	6000	X	X	58				
NKM1790125	Radial Driven Tool ER25	ER25	1:1	6000		X	62.66				
NKM1790225	Radial Driven Tool ER25 Cool Thru*	ER25	1:1	6000	X	X	69.66				
NKM1790516	Radial Mill Head Ø16x17	Ø16x17	1:1	6000		X				42.5	16
NKM0690316	Radial Driven Tool Weldon 16	Weldon 16	1:1	6000		X		50			

* Coolant Thru tools are designed for 1000 psi.
They require 5 Micron Filtration and **CANNOT** be run dry.

QUICK CHANGE RADIAL MTSK DRIVEN TOOL

See Accessories for MTSK Adaptors



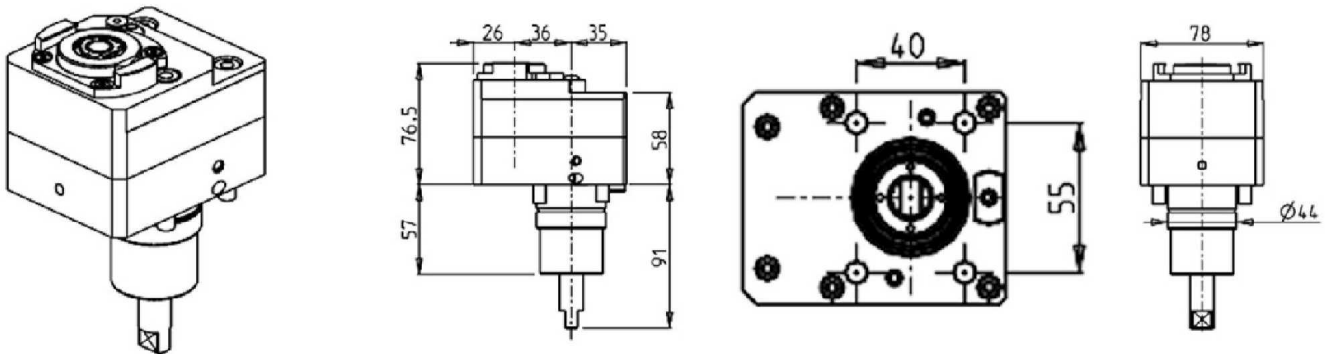
Part Number	Description	Spindle	I	RPM	Cool Thru	Ext Cool	A
NKM1190132	Radial MTSK-32 Driven Tool	MTSK-32	1:1	6000		X	36.7
NKM1190232	Radial MTSK-32 Driven Tool Cool Thru*	MTSK-32	1:1	6000	X		44.7

*Coolant Thru tools are designed for 400 psi MAX.
They require 5 Micron Filtration and **CANNOT** be run dry.

MT100 15ST.

DRIVEN

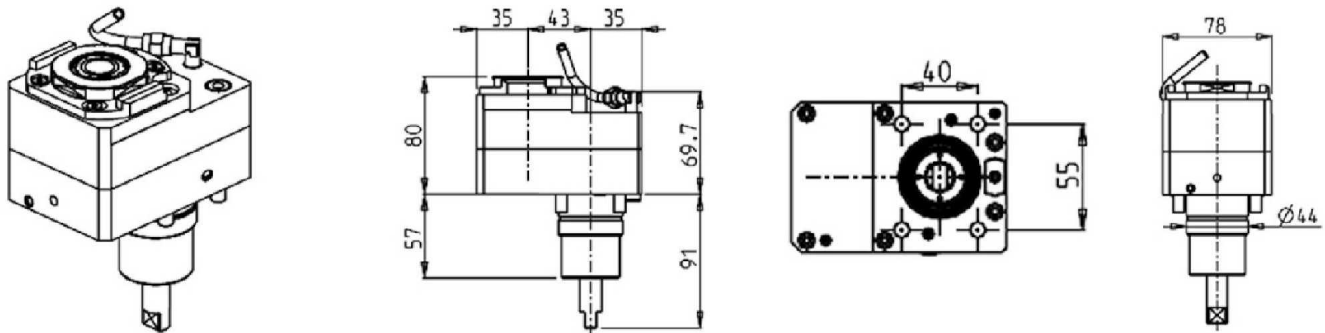
RADIAL DRIVEN TOOL REDIRECTED IN Z BY 36mm



Part Number	Description	Spindle	I	RPM	Reversible	Cool Thru	Ext Cool
NKM1690316	Radial Redirected ERA16	ERA16	1:1	6000	X		X
NKM1690416	Radial Redirected ERA16 Cool Thru*	ERA16	1:1	6000	X	X	X

* Coolant Thru tools are designed for 1000 psi.
They require 5 Micron Filtration and **CANNOT** be run dry.

RADIAL GEARED-DOWN 2:1 DRIVEN TOOL REDIRECTED IN Z BY 43mm



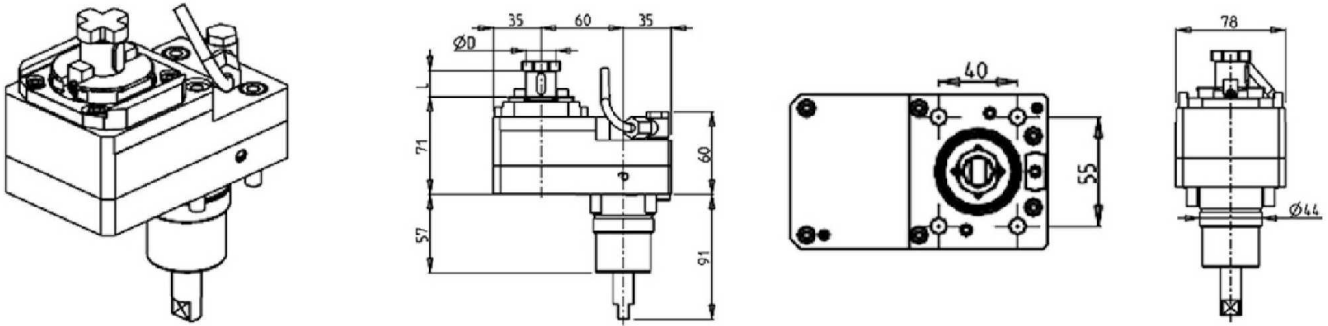
Part Number	Description	Spindle	I	RPM	Reversible	Cool Thru	Ext Cool
NKM1580325	Radial Redirected Geared-Down 2:1 ERA25	ERA25	2:1	3000	X		X
NKM1580425	Radial Redirected Geared-Down 2:1 ERA25 Cool Thru*	ERA25	2:1	3000	X	X	X

* Coolant Thru tools are designed for 1000 psi.
They require 5 Micron Filtration and **CANNOT** be run dry.

MT100 15ST.

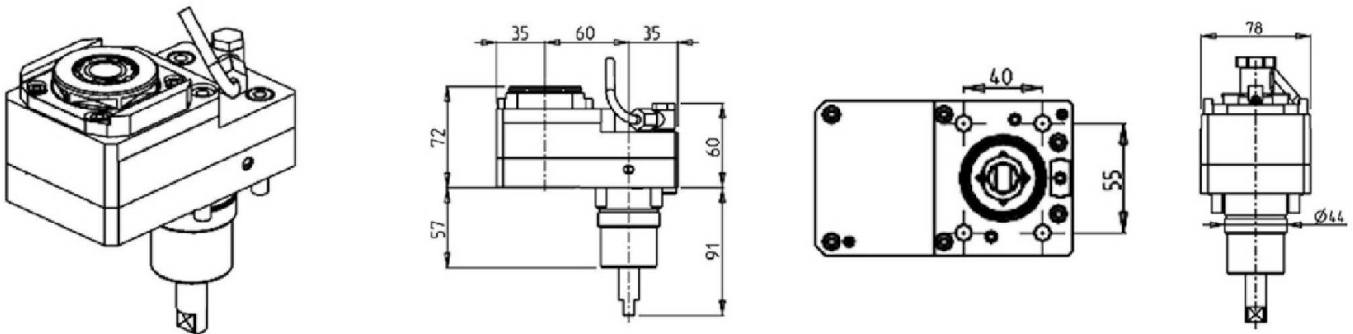
DRIVEN

RADIAL GEARED-DOWN 2:1 DRIVEN TOOL REDIRECTED IN Z BY 60mm



Part Number	Description	Spindle	I	RPM	Reversible	Ext Cool	D	L
NKM1641617	Radial Redirected Geared-Down 2:1 Ø16x17	Ø16x17	2:1	3000	X	X	16	17
NKM1642219	Radial Redirected Geared-Down 2:1 Ø22x19	Ø22x19	2:1	3000	X	X	22	19

RADIAL GEARED-DOWN 3:1 DRIVEN TOOL REDIRECTED IN Z BY 60mm

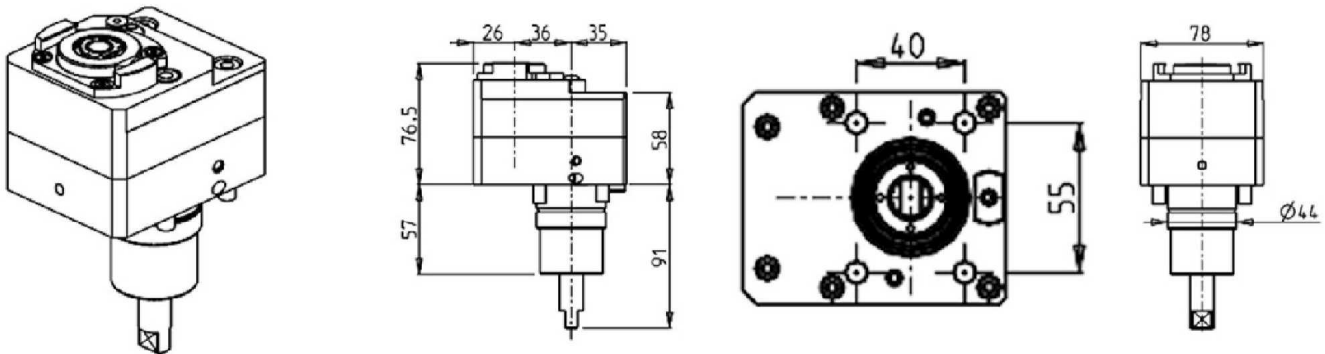


Part Number	Description	Spindle	I	RPM	Reversible	Ext Cool
NKM1530325	Radial Redirected Geared-Down 3:1 ERA25	ERA25	3:1	2000	X	X

MT100 15ST.

DRIVEN

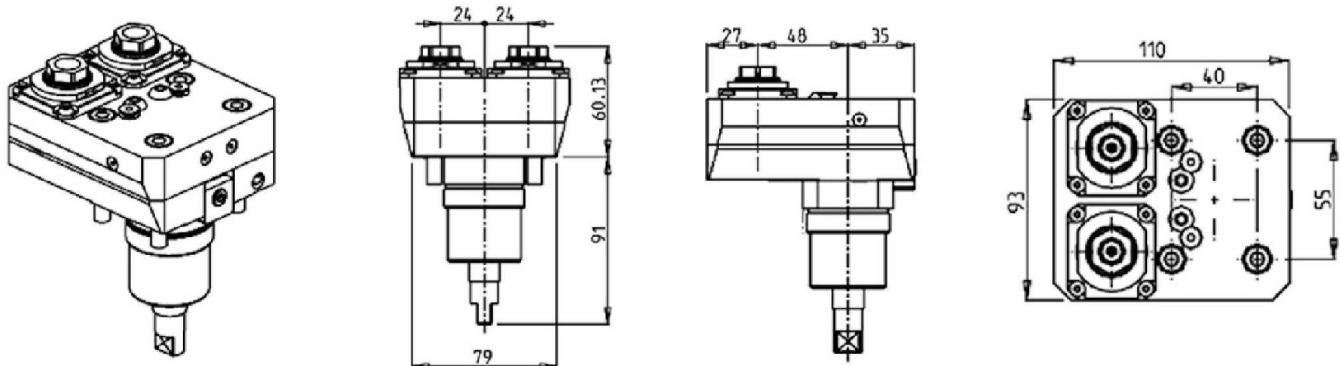
RADIAL GEARED-UP 1:2 DRIVEN TOOL REDIRECTED IN Z BY 36mm



Part Number	Description	Spindle	I	RPM	Reversible	Cool Thru	Ext Cool
NKM1691316	Radial Redirected Geared-Up 1:2 ERA16	ERA16	1:2	12000	X		X
NKM1691416	Radial Redirected Geared-Up 1:2 ERA16 Cool Thru*	ERA16	1:2	12000	X	X	X

* Coolant Thru tools are designed for 1000 psi.
They require 5 Micron Filtration and **CANNOT** be run dry.

RADIAL SINGLE SIDE TWIN HEAD DRIVEN TOOL IN Y

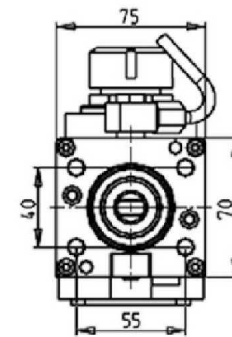
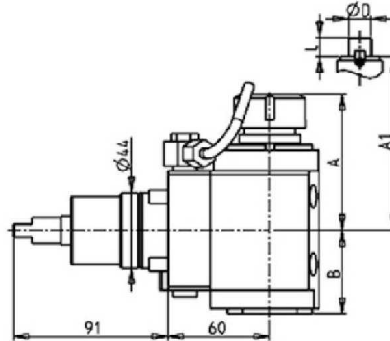
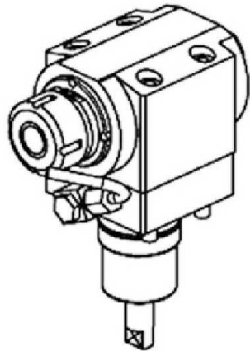


Part Number	Description	Spindle	I	RPM	Ext Cool
NKM0190216	Radial Single Side Twin Head ERA16	ERA16	1:1	6000	X

MT100 15ST.

DRIVEN

AXIAL DRIVEN TOOL H=60mm

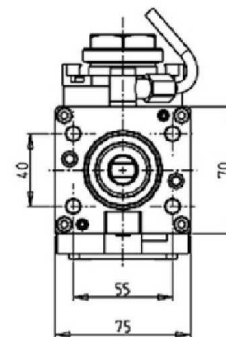
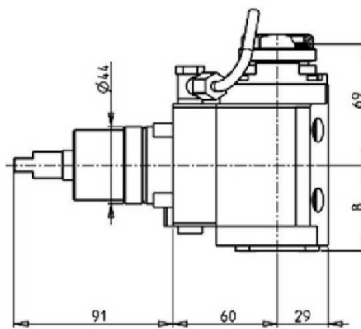
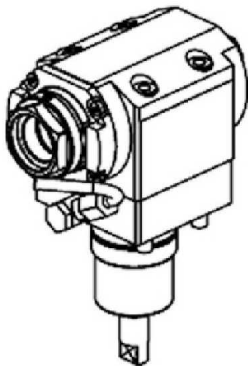


Part Number	Description	Spindle	I	RPM	Reversible	Cool Thru	Ext Cool	A	A1	B	D	L
NKM0240520	Axial Driven Tool ERA20	ERA20	1:1	6000	X		X	69.23	49			
NKM0240620	Axial Driven Tool ERA20 Cool Thru*	ERA20	1:1	6000	X	X	X	69.23	59			
NKM0240125	Axial Driven Tool ER25	ER25	1:1	6000	X		X	80.16	49			
NKM0240225	Axial Driven Tool ER25 Cool Thru*	ER25	1:1	6000	X	X	X	80.16	59			
NKM0241617	Axial Driven Tool 16x17mm	16x17	1:1	6000	X		X		63	49	16	17
NKM0242219	Axial Driven Tool 22x19mm	22x19	1:1	6000	X		X		63	49	22	19

* Coolant Thru tools are designed for 1000 psi.
They require 5 Micron Filtration and **CANNOT** be run dry.

QUICK CHANGE AXIAL MTSK DRIVEN TOOL H=60mm

See Accessories for MTSK Adaptors



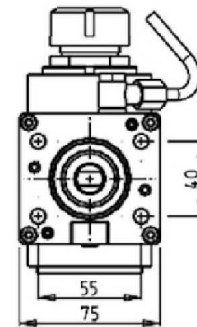
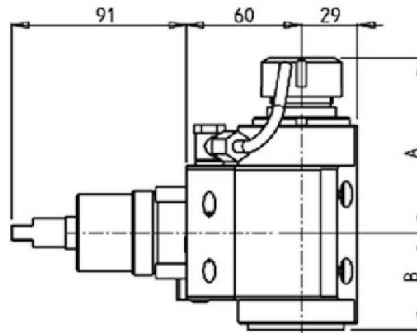
Part Number	Description	Spindle	I	RPM	Reversible	Cool Thru	Ext Cool	B
NKM1200132	Axial MTSK-32 Driven Tool	MTSK-32	1:1	6000	X		X	49
NKM1200232	Axial MTSK-32 Driven Tool Cool Thru*	MTSK-32	1:1	6000	X	X	X	59

* Coolant Thru tools are designed for 1000 psi.
They require 5 Micron Filtration and **CANNOT** be run dry.

MT100 15ST.

DRIVEN

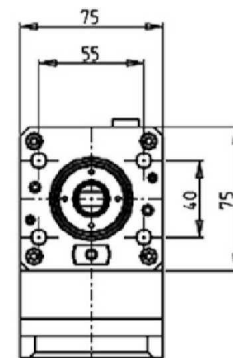
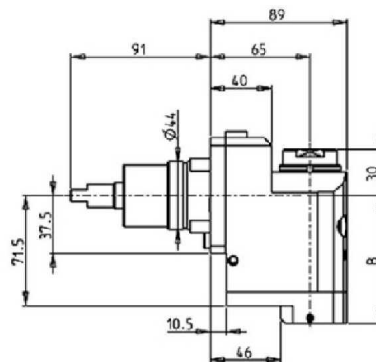
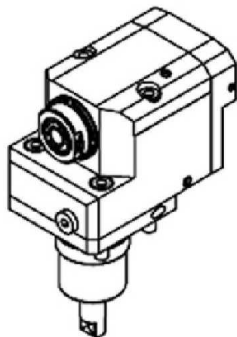
AXIAL GEARED-UP 1:2 DRIVEN TOOL



Part Number	Description	Spindle	I	RPM	Reversible	Cool Thru	Ext Cool	A	B
NKM0710111	Axial Geared-Up 1:2 Driven Tool ER11	ER11	1:2	12000	X		X	83.6	50.5
NKM0710211	Axial Geared-Up 1:2 Driven Tool ER11 Cool Thru*	ER11	1:2	12000	X	X	X	83.6	60.5
NKM0710120	Axial Geared-Up 1:2 Driven Tool ER20	ER20	1:2	12000	X		X	92.16	50.5
NKM0710220	Axial Geared-Up 1:2 Driven Tool ER20 Cool Thru*	ER20	1:2	12000	X	X	X	92.16	60.5
NKM0710320	Axial Geared-Up 1:2 Driven Tool ERA20	ERA20	1:2	12000	X		X	72.5	50.5
NKM0710420	Axial Geared-Up 1:2 Driven Tool ERA20 Cool Thru*	ERA20	1:2	12000	X	X	X	72.5	60.5
NKM0710125	Axial Geared-Up 1:2 Driven Tool ER25	ER25	1:2	12000	X		X	91.16	50.5
NKM0710225	Axial Geared-Up 1:2 Driven Tool ER25 Cool Thru*	ER25	1:2	12000	X	X	X	91.16	60.5

* Coolant Thru tools are designed for 1000 psi.
They require 5 Micron Filtration and **CANNOT** be run dry.

AXIAL GEARED-UP 1:3 REAR-SET DRIVEN TOOL H=65mm



Part Number	Description	Spindle	I	RPM	Reversible	Cool Thru	Ext Cool	B
NKM1650316	Axial Geared-Up 1:3 Rear-Set ERA16	ERA16	1:3	18000	X		X	70.5
NKM1650416	Axial Geared-Up 1:3 Rear-Set ERA16 Cool Thru*	ERA16	1:3	18000	X	X	X	83

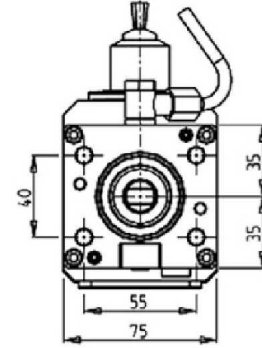
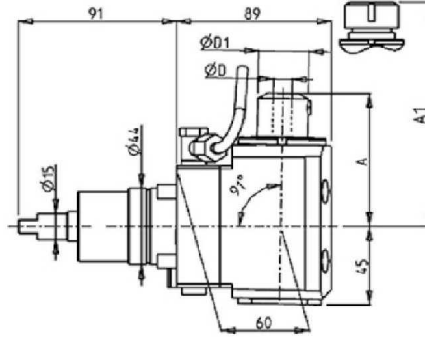
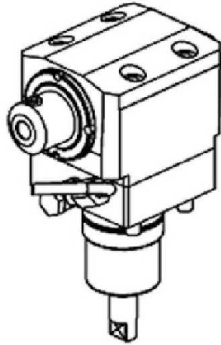
*Coolant Thru tools are designed for 400 psi MAX.
They require 5 Micron Filtration and **CANNOT** be run dry.

MT100 15ST.

DRIVEN

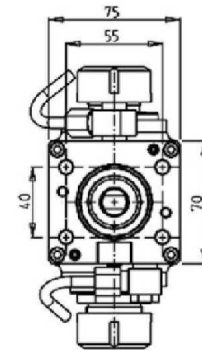
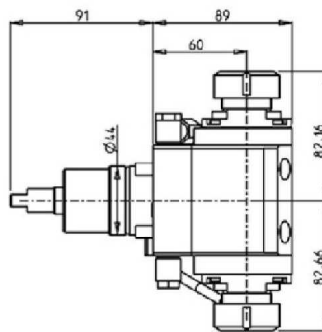
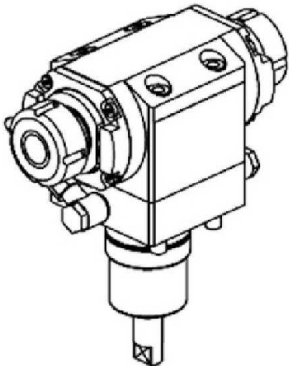
AXIAL DRIVEN TOOL FOR INTERNAL POLYGON-MAKING H=60mm

See Accessories for Mill Heads



Part Number	Description	Spindle	I	RPM	Reversible	Ext Cool	A	A1	D	D1
NKM1469125	Axial Driven Tool for Internal Polygon ER25	ER25	1:1	6000	X	X		82.4		
NKM1469108	Axial Driven Tool for Internal Polygon Weldon 8	WELDON 8	1:1	6000	X	X	76.5		8	29
NKM1469110	Axial Driven Tool for Internal Polygon Weldon 10	WELDON 10	1:1	6000	X	X	76.5		10	29
NKM1469112	Axial Driven Tool for Internal Polygon Weldon 12	WELDON 12	1:1	6000	X	X	76.5		12	29
NKM1469116	Axial Driven Tool for Internal Polygon Weldon 16	WELDON 16	1:1	6000	X	X	73.5		16	32

AXIAL OPPOSITE FACE TWIN DRIVEN TOOL H=60mm

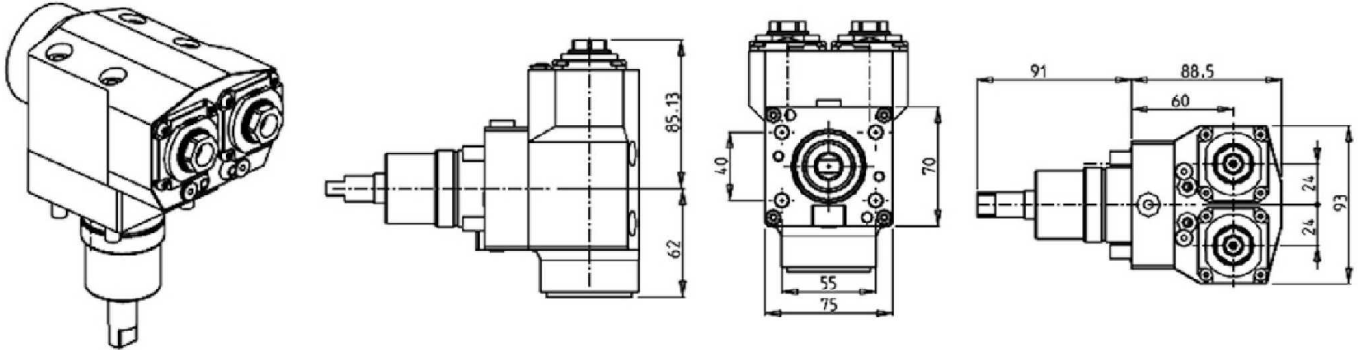


Part Number	Description	Spindle	I	RPM	Reversible	Ext Cool
NKM1820225	Axial Opposite Face Twin Driven Tool ER25+ER25	ER25+ER25	1:1	6000	X	X

MT100 15ST.

DRIVEN

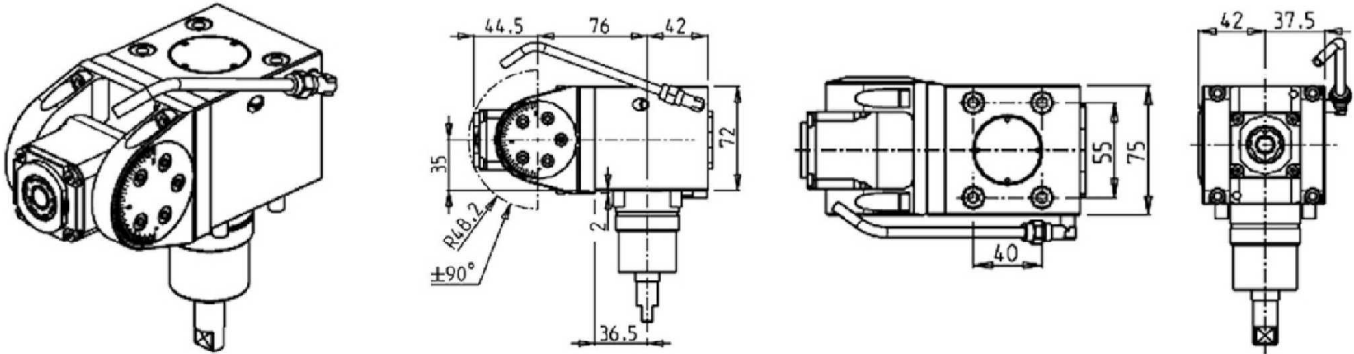
AXIAL SINGLE SIDE TWIN HEAD DRIVEN TOOL IN Y



Part Number	Description	Spindle	I	RPM	Reversible	Ext Cool
NKM0200216	Axial Single Side Twin Head Driven Tool ERA16	ERA16	1:1	6000	X	X

(0-180) ADJUSTABLE ANGLE DRIVEN TOOL

It is not possible to make machining operations at the center of the part with tool oriented at 0° or at 180°



Part Number	Description	Spindle	I	RPM	Reversible	Cool Thru	Ext Cool
NKM0670316	(0-180) Adj. Angle Driven Tool ERA16	ERA16	1:1	6000	X		X
NKM0670416	(0-180) Adj. Angle Driven Tool ERA16 Cool Thru*	ERA16	1:1	6000	X	X	X

* Coolant Thru tools are designed for 1000 psi. They require 5 Micron Filtration and **CANNOT** be run dry.

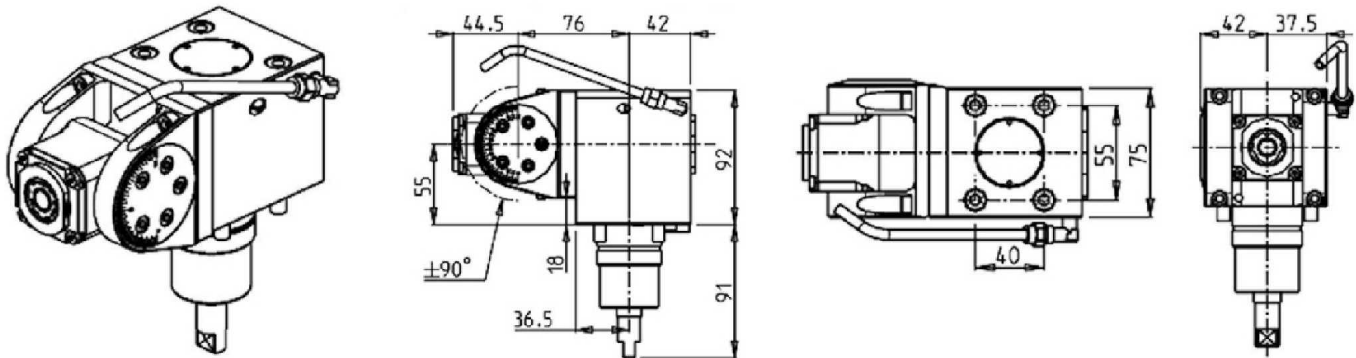
Note :

Wrenches are provided with the purchase of Specialty Toolholders

MT100 15ST.

DRIVEN

0-180° ADJUSTABLE ANGLE DRIVEN TOOL H=55mm



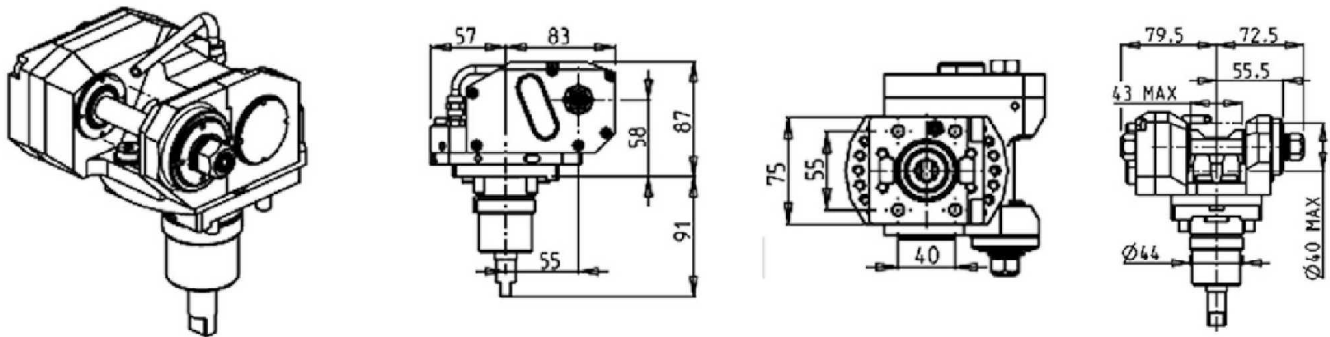
Part Number	Description	Spindle	I	RPM	Reversible	Cool Thru	Ext Cool
NKM0671316	0-180° Adjustable Angle ERA16	ERA16	1:1	6000	X		X
NKM0671416	0-180° Adjustable Angle ERA16 Cool Thru*	ERA16	1:1	6000	X	X	X

* Coolant Thru tools are designed for 1000 psi.
They require 5 Micron Filtration and **CANNOT** be run dry.

Note :

Wrenches are provided with the purchase of Specialty Toolholders

DRIVEN GEAR HOBBER

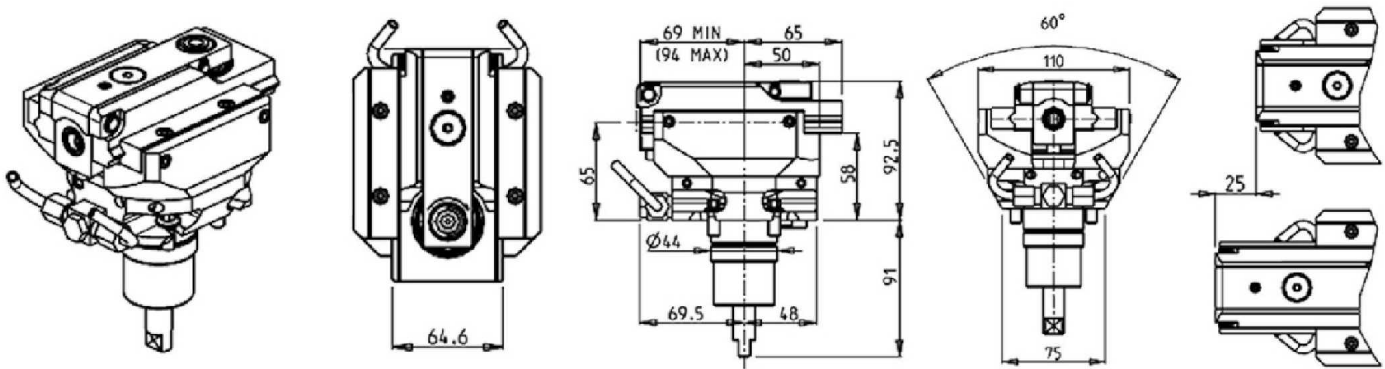


Part Number	Description	I	MAX RPM	Ext Cool	D (mm)
NKM1071108	Gear Hobber 1:1 D=8mm	1:1	6000	X	8
NKM1071110	Gear Hobber 1:1 D=10mm	1:1	6000	X	10
NKM1071113	Gear Hobber 1:1 D=13mm	1:1	6000	X	13
NKM1071116	Gear Hobber 1:1 D=16mm	1:1	6000	X	16
NKM1072108	Gear Hobber 2:1 Geared Down D=8mm	2:1	3000	X	8
NKM1072110	Gear Hobber 2:1 Geared Down D=10mm	2:1	3000	X	10
NKM1072113	Gear Hobber 2:1 Geared Down D=13mm	2:1	3000	X	13
NKM1072116	Gear Hobber 2:1 Geared Down D=16mm	2:1	3000	X	16

MT100 15ST.

DRIVEN

BROACHING/SLOTTING DRIVEN TOOL 25mm STROKE H=65mm

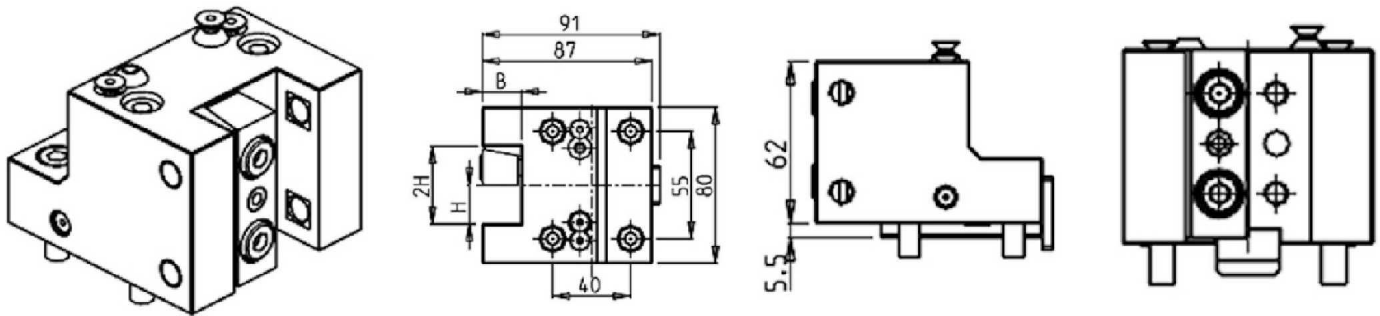


Part Number	Description	I	MAX RPM	Reversible	Ext Cool
NKM1210200	Broaching/Slotting Driven Tool 25mm Stroke	4:1	2400	X	X

MT100 15ST.

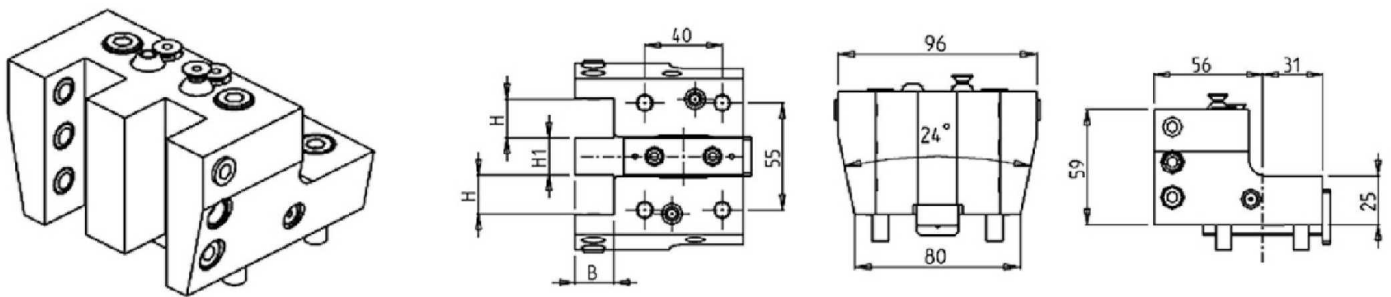
STATIC

RADIAL SINGLE STATIC TOOL



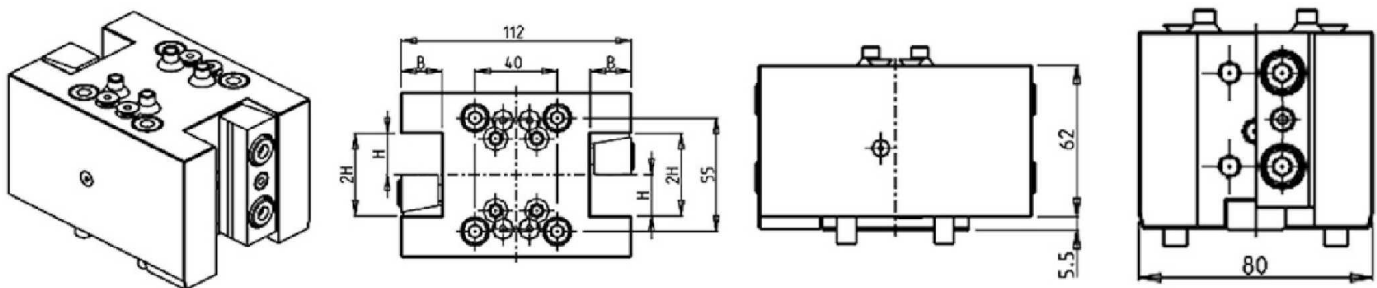
Part Number	Description	# of Tools	Reversible	Cool Thru	Ext Cool	Dimensions	B	H
NKM0162010	Radial Single Static Tool 20mm	1	X		X	mm	20	20
NKM0162050	Radial Single Static Tool 20mm Cool Thru*	1	X	X	X	mm	20	20

RADIAL SINGLE SIDE TWIN STATIC TOOL



Part Number	Description	Reversible	Dimensions	B	H	H1
NKM1972000	Radial Single Side Twin \varnothing 20mm	X	mm	20	20	19

RADIAL DOUBLE STATIC TOOL

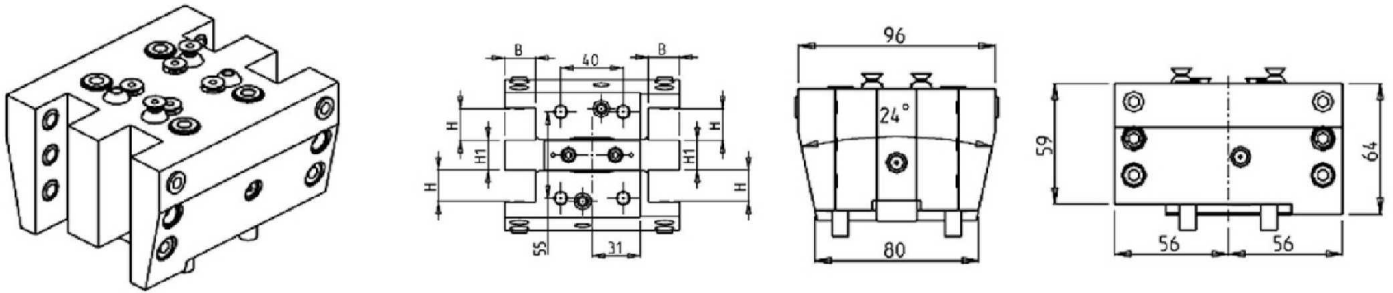


Part Number	Description	# of Tools	Reversible	Dimensions	B	H
NKM0152010	Radial Double Static Tool 20mm	2	X	mm	20	20

MT100 15ST.

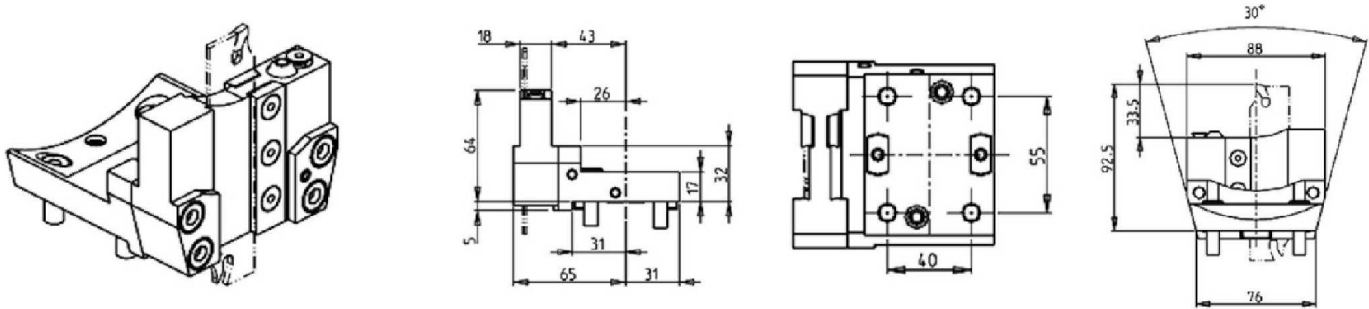
STATIC

RADIAL DOUBLE SIDE TWIN STATIC TOOL



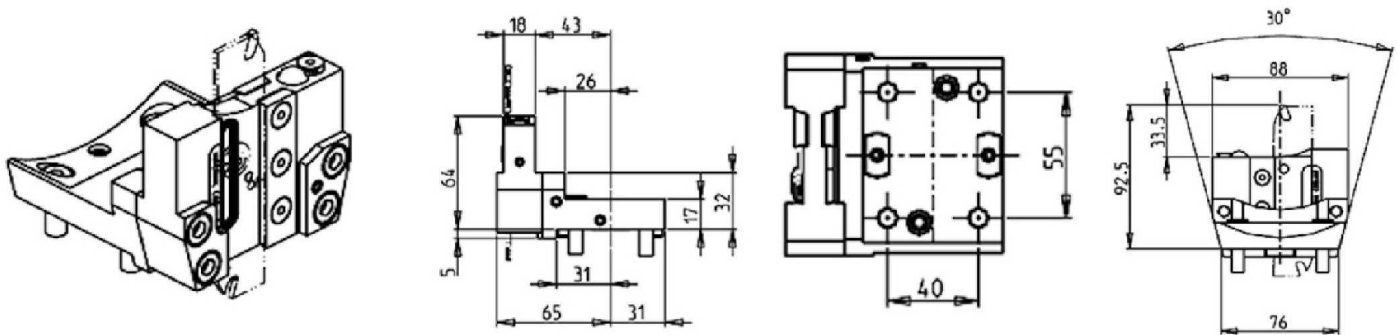
Part Number	Description	Reversible	Dimensions	B	H	H1
NKM1982000	Radial Double Side Twin \varnothing 20mm	X	mm	20	20	19

RADIAL BLADE HOLDER WITH BLADE KIT



Part Number	Description	# of Tools	Reversible	Ext Cool
NKM2140126	Radial Blade Holder with Blade Kit	1	X	X
BLADEKIT	Blade Kit: 1 Blade, 10 Inserts			

RADIAL BLADE HOLDER WITH INTERNAL COOLANT - BLADE KIT NOT INCLUDED

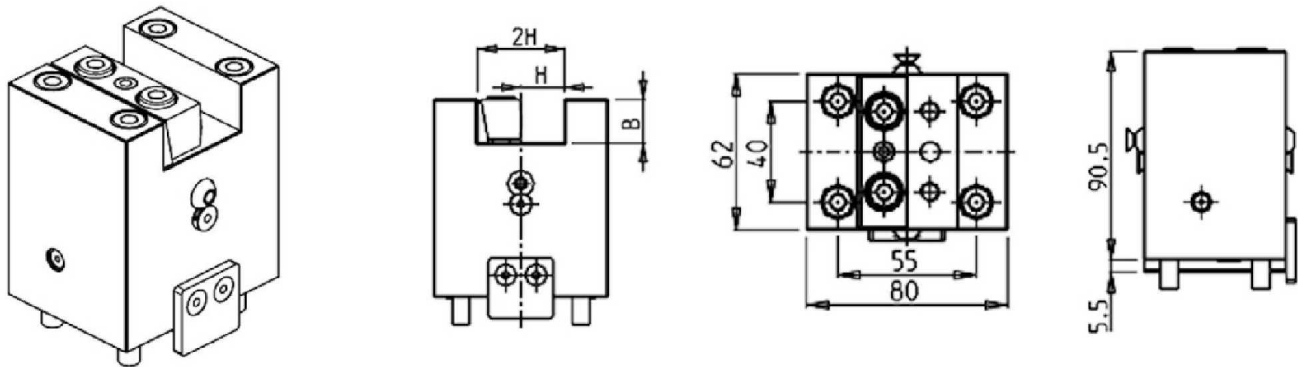


Part Number	Description	# of Tools	Reversible	Ext Cool	Cool Thru
NKM2150226	Radial Blade Holder Internal Coolant	1	X	X	X
COOL THRU BLADEKIT	Blade Kit: 1 Blade, 10 Inserts				

MT100 15ST.

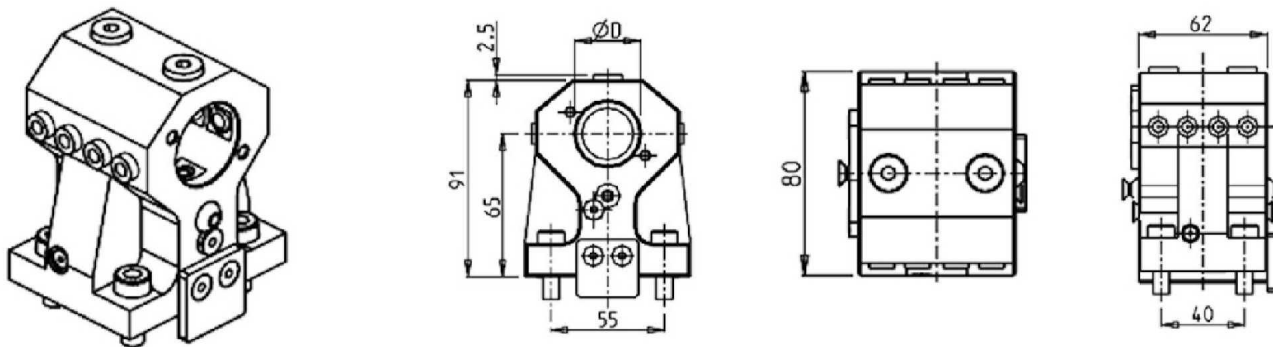
STATIC

AXIAL SINGLE STATIC TOOL



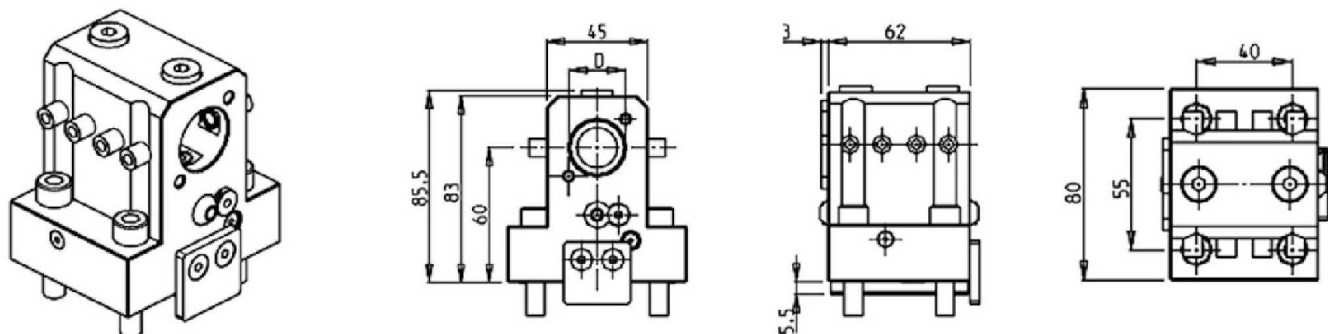
Part Number	Description	# of Tools	Reversible	Dimensions	B	H
NKM0182010	Axial Single Static Tool 20mm	1	X	mm	20	20

AXIAL SINGLE BORING BAR HOLDER H=65mm



Part Number	Description	# of Tools	Reversible	Cool Thru	Ext Cool	Dimensions	D
NKM1993175	Axial Single BBH 1-1/4"	1	X	X	X	Inch	1-1/4"
NKM1993200	Axial Single BBH Ø32mm	1	X	X	X	mm	32
KIT1000001	Plug for 32mm or 1-1/4" BBH to Make Cool Thru						

AXIAL SINGLE BORING BAR HOLDER H=60mm

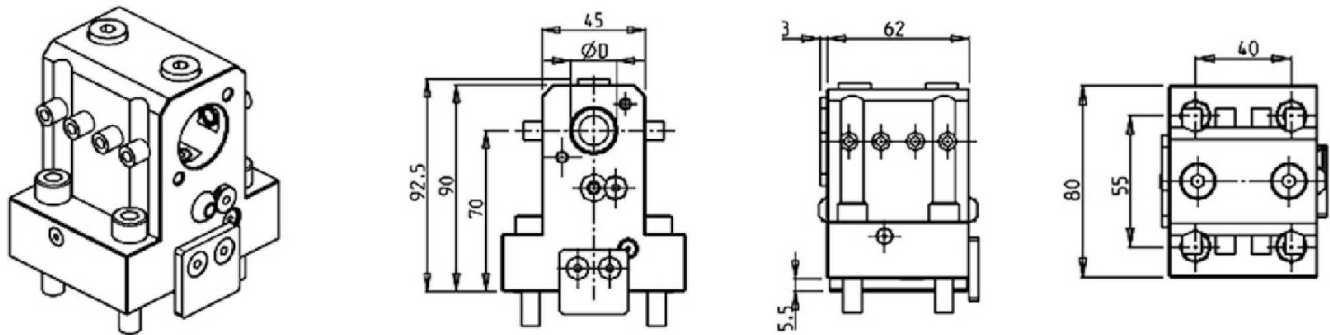


Part Number	Description	# of Tools	Reversible	Cool Thru	Ext Cool	Dimensions	D
NKM0112540	Axial Single Boring Bar Holder 25mm	1	X	X	X	mm	25
KIT1000006	Plug for 25mm BBH to Make Cool Thru						

MT100 15ST.

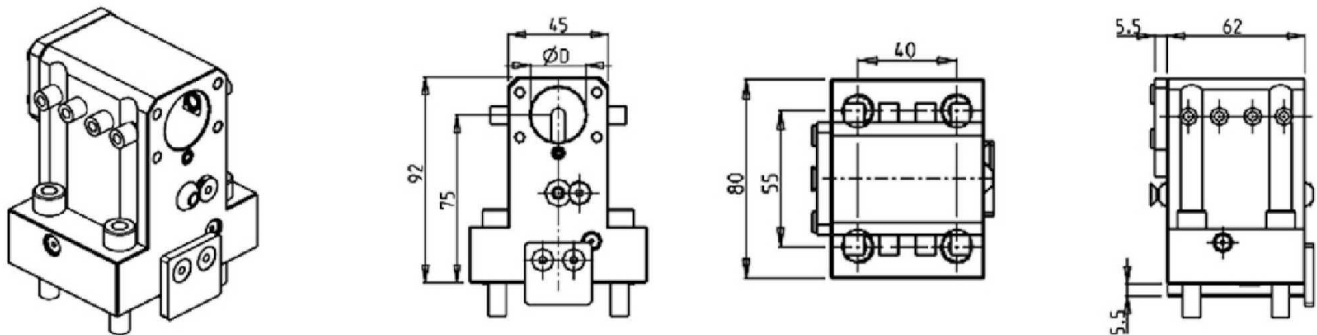
STATIC

AXIAL SINGLE BORING BAR HOLDER H=70mm



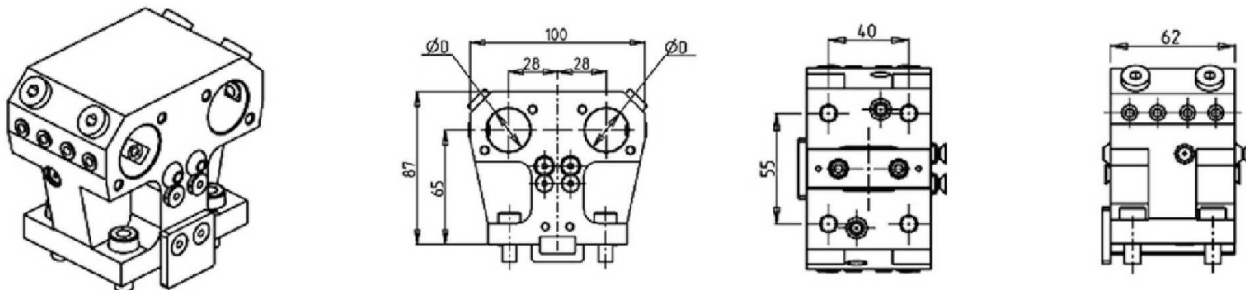
Part Number	Description	# of Tools	Reversible	Cool Thru	Ext Cool	Dimensions	D
NKM0112550	Axial Single Boring Bar Holder 20mm	1	X	X	X	mm	20
KIT1000015	Plug for 20mm BBH to Make Cool Thru						

AXIAL SINGLE BORING BAR HOLDER H=75mm



Part Number	Description	# of Tools	Reversible	Cool Thru	Ext Cool	Dimensions	D
NKM0112560	Axial Single BBH Ø25mm	1	X	X	X	mm	25
KIT1000017	Plug for 25mm BBH to Make Cool Thru						

AXIAL DOUBLE BORING BAR HOLDER 2 POSITIONS IN Y H=65mm

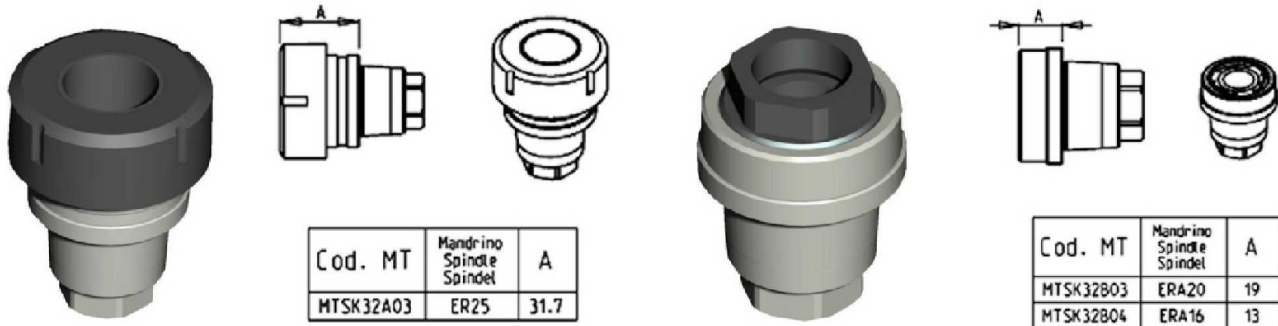


Part Number	Description	Reversible	Cool Thru	Ext Cool	Dimensions	D
NKM2002500	Axial Double BBH 2 Positions Ø25mm	X	X	X	mm	25
KIT1000006	Plug for 25mm BBH to Make Cool Thru					

ACCESSORIES

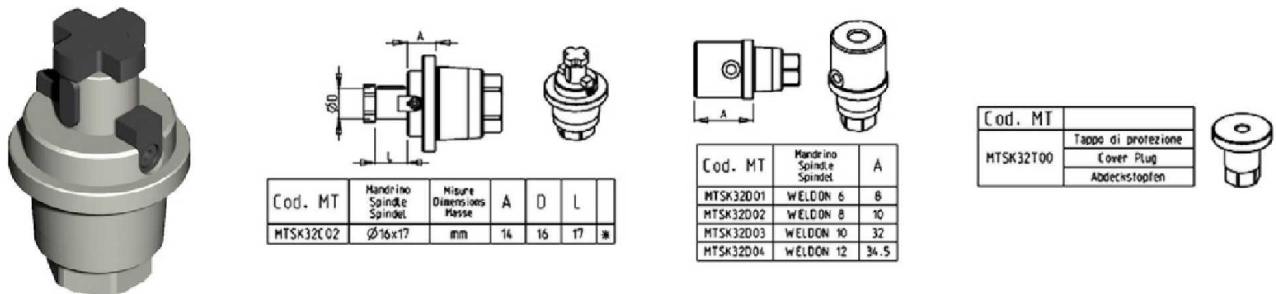
DRIVEN

MTSK-32 ER ADAPTORS



Part Number	Description	Spindle	A
MTSK32B04	MTSK-32 Adaptor ERA16	ERA16	13
MTSK32B03	MTSK-32 Adaptor ERA20	ERA20	19
MTSK32A03	MTSK-32 Adaptor ER25	ER25	31.7

MTSK-32 MILL ADAPTORS



Part Number	Description	Spindle	Dimensions	A	D	L
MTSK32C02	MTSK-32 Adaptor Mill Ø16x17	Ø16x17	mm	14	16	17
MTSK32D01	MTSK-32 Adaptor Mill Weldon 6	Weldon 6		8		
MTSK32D02	MTSK-32 Adaptor Mill Weldon 8	Weldon 8		10		
MTSK32D03	MTSK-32 Adaptor Mill Weldon 10	Weldon 10		32		
MTSK32D04	MTSK-32 Adaptor Mill Weldon 12	Weldon 12		34.5		
MTSK32T00	MTSK-32 Cover Plug					

ER COLLETS

ER COLLET NUMBER	DESCRIPTION	MD LIST PRICE
ER20 SET	ER20 Collet Set (15 Collets)	\$ 330.00
ERX20 SET	ER20 Sealed Collet Set (13 Collets)	\$ 395.00
ER25 SET	ER25 Collet Set (19 Collets)	\$ 375.00
ERX25 SET	ER25 Sealed Collet Set (17 Collets)	\$ 475.00
ER32 SET	ER32 Collet Set (21 Collets)	\$ 425.00
ERX32 SET	ER32 Sealed Collet Set (21 Collets)	\$ 595.00
ER40 SET	ER40 Collet Set (29 Collets)	\$ 695.00
ERX40 SET	ER40 Sealed Collet Set (27 Collets)	\$ 850.00



Phone: (810) 632-4446 / Fax: (810) 632-4467

Table of Contents

Alphabetized Listing

((0-180) ADJUSTABLE ANGLE DRIVEN TOOL	21	RADIAL SINGLE SIDE TWIN STATIC TOOL	6, 24
	(0-180) ADJUSTABLE ANGLE DRIVEN TOOL H=74mm	4, 11	RADIAL SINGLE STATIC TOOL	6, 12, 24
O	0-180° ADJUSTABLE ANGLE DRIVEN TOOL H=55mm	22	S	
A	ACCESSORIES	28	See Accessories for Mill Heads	20
	AXIAL DOUBLE BORING BAR HOLDER 2 POSITIONS IN Y H=125mm	8	See Accessories for MTSK Adaptors	14, 18
	AXIAL DOUBLE BORING BAR HOLDER 2 POSITIONS IN Y H=65mm	27	STATIC	6-8, 12-13, 24-27
	AXIAL DRIVEN TOOL FOR INTERNAL POLYGON MAKING H=100mm	2		
	AXIAL DRIVEN TOOL FOR INTERNAL POLYGON-MAKING H=60mm	20		
	AXIAL DRIVEN TOOL H=100mm	2, 10		
	AXIAL DRIVEN TOOL H=60mm	18		
	AXIAL GEARED-UP 1:2 DRIVEN TOOL	19		
	AXIAL GEARED-UP 1:2 DRIVEN TOOL H=100mm	10		
	AXIAL GEARED-UP 1:3 REAR-SET DRIVEN TOOL H=65mm	19		
	AXIAL OPPOSITE FACE TWIN DRIVEN TOOL H=100mm	3		
	AXIAL OPPOSITE FACE TWIN DRIVEN TOOL H=60mm	20		
	AXIAL SINGLE BORING BAR HOLDER H=60mm	26		
	AXIAL SINGLE BORING BAR HOLDER H=65mm	26		
	AXIAL SINGLE BORING BAR HOLDER H=70mm	27		
	AXIAL SINGLE BORING BAR HOLDER H=75mm	27		
	AXIAL SINGLE BORING BAR HOLDER H=95mm	8, 13		
	AXIAL SINGLE SIDE TWIN HEAD DRIVEN TOOL IN Y	21		
	AXIAL SINGLE STATIC TOOL	8, 13, 26		
B	BROACHING/SLOTTING DRIVEN TOOL 25mm STROKE H=65mm	20		
D	DRIVEN	1-5, 9-11, 14-23, 28		
	DRIVEN GEAR HOBBER	5, 22		
M	MD60 - MD120	9-13		
	MT100 15ST.	14-27		
	MT12 - MT200	1-8		
	MTSK-32 ER ADAPTORS	28		
	MTSK-32 MILL ADAPTORS	28		
Q	QUICK CHANGE AXIAL MTSK DRIVEN TOOL H=60mm	18		
	QUICK CHANGE RADIAL MTSK DRIVEN TOOL	14		
R	RADIAL BLADE HOLDER WITH BLADE KIT	7, 12		
	RADIAL BLADE HOLDER WITH BLADE KIT	25		
	RADIAL BLADE HOLDER WITH INTERNAL COOLANT BLADE KIT NOT INCLUDED	7, 12, 25		
	RADIAL DOUBLE SIDE TWIN STATIC TOOL	6, 25		
	RADIAL DOUBLE STATIC TOOL	24		
	RADIAL DRIVEN TOOL	1, 9		
	RADIAL DRIVEN TOOL REDIRECTED IN Z BY 36mm	15		
	RADIAL GEARED-DOWN 2:1 DRIVEN TOOL REDIRECTED IN Z BY 43mm	15		
	RADIAL GEARED-DOWN 2:1 DRIVEN TOOL REDIRECTED IN Z BY 60mm	16		
	RADIAL GEARED-DOWN 3:1 DRIVEN TOOL REDIRECTED IN Z BY 60mm	16		
	RADIAL GEARED-UP 1:2 DRIVEN TOOL REDIRECTED IN Z BY 36mm	17		
	RADIAL GEARED-UP 1:3 DRIVEN TOOL REDIRECTED IN Z BY 9 90mm	14		
	RADIAL REINFORCED DRIVEN TOOL	14		
	RADIAL SINGLE SIDE TWIN HEAD DRIVEN TOOL IN Y	17		

Table of Contents

Part Number Index

B			MUR0162010	Radial Single Static Tool 20mm Cool Thru*	6
BLADEKIT	Blade Kit: 1 Blade, 10 Inserts	7	MUR0162010	Radial Single Static Tool 20mm Cool Thru*	12
BLADEKIT	Blade Kit: 1 Blade, 10 Inserts	12	MUR0172000	Axial Single Static Tool 20mm	13
BLADEKIT	Blade Kit: 1 Blade, 10 Inserts	25	MUR0172000	Axial Single Static Tool 20mm	8
C			MUR0172010	Axial Single Static Tool 20mm Cool Thru*	8
COOL THRU	Blade Kit: 1 Blade, 10 Inserts	25	MUR0172010	Axial Single Static Tool 20mm Cool Thru*	13
BLADEKIT			MUR0183200	Axial Single BBH 32mm	13
COOL THRU	Blade Kit: 1 Blade, 10 Inserts	12	MUR0183200	Axial Single BBH 32mm	8
BLADEKIT			MUR0190132	Radial Blade Holder with Blade Kit	7
COOL THRU	Blade Kit: 1 Blade, 10 Inserts	7	MUR0190132	Radial Blade Holder with Blade Kit	12
BLADEKIT			MUR0200132L	Radial Blade Holder Cool Thru (Left Hand)	7
COOL THRU	Blade Kit: 1 Blade, 10 Inserts	7	MUR0200132L	Radial Blade Holder Cool Thru (Left Hand)	12
BLADEKIT			MUR0200132R	Radial Blade Holder Cool Thru (Right Hand)	12
COOL THRU	Blade Kit: 1 Blade, 10 Inserts	8	MUR0200132R	Radial Blade Holder Cool Thru (Right Hand)	7
BLADEKIT			MUR0211108	Driven Gear Hobb 1:1 D=8mm	5
KIT1000001	Plug for 32mm or 1-1/4" BBH to Make Cool Thru	8	MUR0211110	Driven Gear Hobb 1:1 D=10mm	5
KIT1000001	Plug for 32mm or 1-1/4" BBH to Make Cool Thru	26	MUR0211113	Driven Gear Hobb 1:1 D=13mm	5
KIT1000001	Plug for 32mm or 1-1/4" BBH to Make Cool Thru	13	MUR0211116	Driven Gear Hobb 1:1 D=16mm	5
KIT1000006	Plug for 25mm BBH to Make Cool Thru	26	MUR0211155	Driven Gear Hobb 1:1 D=1/2"	5
KIT1000006	Plug for 25mm BBH to Make Cool Thru	27	MUR0212108	Driven Gear Hobb Geared-Down 2:1 D=8mm	5
KIT1000006	Plug for 25mm BBH to Make Cool Thru	8	MUR0212110	Driven Gear Hobb Geared-Down 2:1 D=10mm	5
KIT1000015	Plug for 20mm BBH to Make Cool Thru	27	MUR0212113	Driven Gear Hobb Geared-Down 2:1 D=13mm	5
KIT1000017	Plug for 25mm BBH to Make Cool Thru	27	MUR0212116	Driven Gear Hobb Geared-Down 2:1 D=16mm	5
M			MUR0212155	Driven Gear Hobb Geared-Down 2:1 D=1/2"	5
MTSK32A03	MTSK-32 Adaptor ER25	28	MUR0250120	Radial Geared-Up 1:3 ER20	9
MTSK32B03	MTSK-32 Adaptor ERA20	28	MUR0250220	Radial Geared-Up 1:3 ER20 Cool Thru*	9
MTSK32B04	MTSK-32 Adaptor ERA16	28	MUR0269108	Axial Driven Tool for Internal Polygon Weldon 8	2
MTSK32C02	MTSK-32 Adaptor Mill Ø16x17	28	MUR0269110	Axial Driven Tool for Internal Polygon Weldon 10	2
MTSK32D01	MTSK-32 Adaptor Mill Weldon 6	28	MUR0269112	Axial Driven Tool for Internal Polygon Weldon 12	2
MTSK32D02	MTSK-32 Adaptor Mill Weldon 8	28	MUR0269116	Axial Driven Tool for Internal Polygon Weldon 16	2
MTSK32D03	MTSK-32 Adaptor Mill Weldon 10	28	MUR0269125	Axial Driven Tool for Internal Polygon ER25	2
MTSK32D04	MTSK-32 Adaptor Mill Weldon 12	28	MUR0282520	Axial Opposite Face ERA25+ERA20	3
MTSK32T00	MTSK-32 Cover Plug	28	MUR0283225	Axial Opposite Face ER32+ER25	3
MUR0030125	Axial Driven Tool ER25	2	MUR0292000	Radial Single Side Twin Ø20mm	6
MUR0030132	Axial Driven Tool ER32	2	MUR0302000	Radial Double Side Twin Ø20mm	6
MUR0030140	Axial Driven Tool ER40	2	MUR0312500	Axial Double BBH 2 Positions in Y Ø25mm	8
MUR0030225	Axial Driven Tool ER25 Cool Thru*	2	N		
MUR0030232	Axial Driven Tool ER32 Cool Thru*	2	NKM0112540	Axial Single Boring Bar Holder 25mm	26
MUR0030240	Axial Driven Tool ER40 Cool Thru*	2	NKM0112550	Axial Single Boring Bar Holder 20mm	27
MUR0030325	Axial Driven Tool ERA25	2	NKM0112560	Axial Single BBH Ø25mm	27
MUR0030425	Axial Driven Tool ERA25 Cool Thru*	2	NKM0152010	Radial Double Static Tool 20mm	24
MUR0030516	Axial Driven Tool 16x17mm	2	NKM0162010	Radial Single Static Tool 20mm	24
MUR0030522	Axial Driven Tool 22x19mm	2	NKM0162050	Radial Single Static Tool 20mm Cool Thru*	24
MUR0030527	Axial Driven Tool 27x21mm	2	NKM0182010	Axial Single Static Tool 20mm	26
MUR0040125	Radial Driven Tool ER25	9	NKM0190216	Radial Single Side Twin Head ERA16	17
MUR0040132	Radial Driven Tool ER32	9	NKM0200216	Axial Single Side Twin Head Driven Tool ERA16	21
MUR0040225	Radial Driven Tool ER25 Cool Thru*	9	NKM0240125	Axial Driven Tool ER25	18
MUR0040232	Radial Driven Tool ER32 Cool Thru*	9	NKM0240225	Axial Driven Tool ER25 Cool Thru*	18
MUR0040325	Radial Driven Tool ERA25	9	NKM0240520	Axial Driven Tool ERA20	18
MUR0040425	Radial Driven Tool ERA25 Cool Thru*	9	NKM0240620	Axial Driven Tool ERA20 Cool Thru*	18
MUR0040516	Radial Driven Tool 16x17mm	9	NKM0241617	Axial Driven Tool 16x17mm	18
MUR0050125	Radial Driven Tool ER25	1	NKM0242219	Axial Driven Tool 22x19mm	18
MUR0050132	Radial Driven Tool ER32	1	NKM0670316	(0-180) Adj. Angle Driven Tool ERA16	21
MUR0050225	Radial Driven Tool ER25 Cool Thru*	1	NKM0670416	(0-180) Adj. Angle Driven Tool ERA16 Cool Thru*	21
MUR0050232	Radial Driven Tool ER32 Cool Thru*	1	NKM0671316	0-180° Adjustable Angle ERA16	22
MUR0050325	Radial Driven Tool ERA25	1	NKM0671416	0-180° Adjustable Angle ERA16 Cool Thru*	22
MUR0050425	Radial Driven Tool ERA25 Cool Thru*	1	NKM0690316	Radial Driven Tool Weldon 16	14
MUR0050516	Radial Driven Tool 16x17mm	1	NKM0710111	Axial Geared-Up 1:2 Driven Tool ER11	19
MUR0060116	(0-180) Adj. Angle Driven Tool ERA16	11	NKM0710120	Axial Geared-Up 1:2 Driven Tool ER20	19
MUR0060216	(0-180) Adj. Angle Driven Tool ERA16 Cool Thru*	11	NKM0710125	Axial Geared-Up 1:2 Driven Tool ER25	19
MUR0070116	(0-180) Adj. Angle Driven Tool ERA16	4	NKM0710211	Axial Geared-Up 1:2 Driven Tool ER11 Cool Thru*	19
MUR0070216	(0-180) Adj. Angle Driven Tool ERA16 Cool Thru*	4			
MUR0080125	Axial Driven Tool ER25	10			
MUR0080225	Axial Driven Tool ER25 Cool Thru*	10			
MUR0150325	Axial Geared-Up 1:2 ERA25	10			
MUR0150425	Axial Geared-Up 1:2 ERA25 Cool Thru*	10			
MUR0162000	Radial Single Static Tool 20mm	12			
MUR0162000	Radial Single Static Tool 20mm	6			

Table of Contents

Part Number Index

NKM0710220	Axial Geared-Up 1:2 Driven Tool ER20 Cool Thru*	19
NKM0710225	Axial Geared-Up 1:2 Driven Tool ER25 Cool Thru*	19
NKM0710320	Axial Geared-Up 1:2 Driven Tool ERA20	19
NKM0710420	Axial Geared-Up 1:2 Driven Tool ERA20 Cool Thru*	19
NKM1071108	Gear Hobber 1:1 D=8mm	22
NKM1071110	Gear Hobber 1:1 D=10mm	22
NKM1071113	Gear Hobber 1:1 D=13mm	22
NKM1071116	Gear Hobber 1:1 D=16mm	22
NKM1072108	Gear Hobber 2:1 Geared Down D=8mm	22
NKM1072110	Gear Hobber 2:1 Geared Down D=10mm	22
NKM1072113	Gear Hobber 2:1 Geared Down D=13mm	22
NKM1072116	Gear Hobber 2:1 Geared Down D=16mm	22
NKM1190132	Radial MTSK-32 Driven Tool	14
NKM1190232	Radial MTSK-32 Driven Tool Cool Thru*	14
NKM1200132	Axial MTSK-32 Driven Tool	18
NKM1200232	Axial MTSK-32 Driven Tool Cool Thru*	18
NKM1210200	Broaching/Slotting Driven Tool 25mm Stroke	23
NKM1469108	Axial Driven Tool for Internal Polygon Weldon 8	20
NKM1469110	Axial Driven Tool for Internal Polygon Weldon 10	20
NKM1469112	Axial Driven Tool for Internal Polygon Weldon 12	20
NKM1469116	Axial Driven Tool for Internal Polygon Weldon 16	20
NKM1469125	Axial Driven Tool for Internal Polygon ER25	20
NKM1530325	Radial Redirected Geared-Down 3:1 ERA25	16
NKM1580325	Radial Redirected Geared-Down 2:1 ERA25	15
NKM1580425	Radial Redirected Geared-Down 2:1 ERA25 Cool Thru*	15
NKM1641617	Radial Redirected Geared-Down 2:1 Ø16x17	16
NKM1642219	Radial Redirected Geared-Down 2:1 Ø22x19	16
NKM1650316	Axial Geared-Up 1:3 Rear-Set ERA16	19
NKM1650416	Axial Geared-Up 1:3 Rear-Set ERA16 Cool Thru*	19
NKM1690316	Radial Redirected ERA16	15
NKM1690416	Radial Redirected ERA16 Cool Thru*	15
NKM1691316	Radial Redirected Geared-Up 1:2 ERA16	17
NKM1691416	Radial Redirected Geared-Up 1:2 ERA16 Cool Thru*	17
NKM1790125	Radial Driven Tool ER25	14
NKM1790225	Radial Driven Tool ER25 Cool Thru*	14
NKM1790320	Radial Driven Tool ERA20	14
NKM1790420	Radial Driven Tool ERA20 Cool Thru*	14
NKM1790516	Radial Mill Head Ø16x17	14
NKM1820225	Axial Opposite Face Twin Driven Tool ER25+ER25	20
NKM1972000	Radial Single Side Twin Ø20mm	24
NKM1982000	Radial Double Side Twin Ø20mm	25
NKM1993175	Axial Single BBH 1-1/4"	26
NKM1993200	Axial Single BBH Ø32mm	26
NKM2002500	Axial Double BBH 2 Positions Ø25mm	27
NKM2140126	Radial Blade Holder with Blade Kit	25
NKM2150226	Radial Blade Holder Internal Coolant	25