

DRIVEN and STATIC TOOLING  
For  
**SPINNER**



10139 BERGIN RD.  
HOWELL, MI 48843  
PHONE : 877-91-TOOLS ( 810-632-4446 )  
FAX: 877-92-TOOLS ( 810-632-4467 )  
EMAIL: [info@mdtooling.com](mailto:info@mdtooling.com)  
WEBSITE: [www.mdtooling.com](http://www.mdtooling.com)

# Live Tooling



M. T. Marchetti, a major live tool manufacturer in northern Italy, is a leader in live tool technology. The formula is simple. Use only the best angular contact high-speed bearings available. Add to this an exacting tolerances for all ground shafts, gears and bearing pocket features. Next, develop a sealed system that **will not** allow any contamination from chips or coolant.

Top this all off with a superior design and you end up with a live tool that is more rigid, faster and will last longer. **We back this up with a 2-Year factory warranty.**

## **Our Live Tool Warranty**

Our tooling will give years of service in the most demanding applications. The superior design and rugged construction has proven this over the last 12 years. The reliability of our tools allows us to provide a 2-year factory warranty, for non-wear components.

MD Tooling will repair any defective tool holders for a period of 2 years from the date of purchase.

## **Product Range**

We have the largest range of live tooling available for most major machine tool manufactures.

Our available products include an extensive line of standard live tooling as well as specialty tool holders such as 0-180 adjustable angle tool holders, gear hobbors, and even worm gear generators. Our product range includes geared up holders to 60,000 RPM and are engineered for 1,000 PSI coolant through.

We are an industry leader in providing complete tooling solutions with hundreds of static tool options as well.

## **Technical Support**

Here at MD Tooling we have a full technical support department with over 35 years of CNC experience.

Our highly qualified staff can help with part processing, tooling up a job from a blue print and even assist with part programming. Applications Engineers are always available by phone to answer any questions you may have about our tooling or any other CNC related issue.

## **Stock and Replenishment**

MD Tooling maintains an extensive inventory of tooling in our warehouse in Michigan. Our current "fill" rate on orders is 93% from our stock in Michigan for same day shipping.

Should you require a non-stock item, our manufacturer, M.T. Marchetti also maintains a large inventory in Italy. Tooling can be obtained in as little as 3-5 business days.

## **Shipping**

MD Tooling realizes that when you need tooling, often you can't wait until the next day. We process orders and ship from available stock right up until 4PM EST to make certain we get your tooling solutions to you as quickly as possible.

We regularly ship throughout the day via UPS, FedEx or any other carrier that a customer requests.



10139 Bergin Road  
Howell, MI 48843  
**Phone:** (810) 632-4446  
**Fax:** (810) 632-4467  
**Email:** [info@mdtooling.com](mailto:info@mdtooling.com)  
**Web:** [www.mdtooling.com](http://www.mdtooling.com)

- Fast, Friendly, Reliable Service!
- Quality tooling at highly competitive pricing.
- 2-Year Warranty on all live tools.
- Extensive inventory. We currently ship over 93% of all orders same day.
- In-house repair services available.
- If a warranty tool needs to be returned for inspection, service or repair, loaner tools are available to keep your machine tool production up and running.
- More specialty tool holders than any other manufacturer.
- Custom tool holders available.
- All available tooling may not be shown in this catalog. If you can't find the holder you're looking for, please contact our office for assistance.



# Table of Contents

## Categorized Listing

### TC300 12 ST. - TC600 16 ST. - TTC300 12 ST. TTS42/65 (BMT45 SHORT) - MICROTURN 36/52 **1**

#### DRIVEN **1**

RADIAL DRIVEN TOOL	1
QUICK CHANGE RADIAL MTSK DRIVEN TOOL	1
RADIAL SINGLE SIDE TWIN HEAD DRIVEN TOOL IN Y	2
AXIAL DRIVEN TOOL	3
QUICK CHANGE AXIAL MTSK DRIVEN TOOL	3
AXIAL OPPOSITE FACE TWIN DRIVEN TOOL	4
AXIAL SINGLE SIDE TWIN HEAD DRIVEN TOOL IN Y	4
(0-180) ADJUSTABLE ANGLE DRIVEN TOOL	5
BROACHING/SLOTTING DRIVEN TOOL 25mm STROKE H=75mm	5

#### STATIC **6**

RADIAL SINGLE STATIC TOOL	6
RADIAL SINGLE SIDE TWIN STATIC TOOL	6
AXIAL SINGLE STATIC TOOL	7
AXIAL SINGLE BORING BAR HOLDER H=85mm	7

### TC300 12 ST. - TC600 16 ST. - TTC300 12 ST. TTS42/65 (BMT45 SHORT) **7**

#### STATIC **7**

AXIAL SINGLE BORING BAR HOLDER H=100mm	7
--	---

### TC800 SMCY (BMT65) **8**

#### DRIVEN **8**

RADIAL REINFORCED DRIVEN TOOL	8
QUICK CHANGE RADIAL MTSK REINFORCED DRIVEN TOOL	8
RADIAL GEARED-DOWN 2:1 DRIVEN TOOL REDIRECTED IN Z BY 80mm	9
RADIAL GEARED-UP 1:2 DRIVEN TOOL REDIRECTED IN Z BY 36mm	9
RADIAL SINGLE-SIDE TWIN HEAD DRIVEN TOOL IN Y-AXIS	9
RADIAL SINGLE SIDE 3 OUTLET DRIVEN TOOL IN Y	10
RADIAL INVERTED DRIVEN TOOL 250mm INTERAXIS	10
AXIAL DRIVEN TOOL H=72mm	11
AXIAL REINFORCED DRIVEN TOOL H=72mm	11
QUICK CHANGE AXIAL MTSK DRIVEN TOOL H=72mm	12
QUICK CHANGE AXIAL MTSK REINFORCED DRIVEN TOOL H=72mm	12
AXIAL DRIVEN TOOL H=85mm	13
AXIAL REINFORCED DRIVEN TOOL H=85mm	13
QUICK CHANGE AXIAL MTSK DRIVEN TOOL H=85mm	14
QUICK CHANGE AXIAL MTSK REINFORCED DRIVEN TOOL H=85mm	14
AXIAL DRIVEN TOOL H=95mm	15
AXIAL REINFORCED DRIVEN TOOL H=95mm	15
AXIAL REAR-SET DRIVEN TOOL H=95mm	16
QUICK CHANGE AXIAL MTSK DRIVEN TOOL H=95mm	16
QUICK CHANGE AXIAL MTSK REINFORCED DRIVEN TOOL H=95mm	17
AXIAL DRIVEN TOOL H=100mm	18
AXIAL REINFORCED DRIVEN TOOL H=100mm	19
QUICK CHANGE AXIAL MTSK DRIVEN TOOL H=100mm	20
QUICK CHANGE AXIAL MTSK REINFORCED DRIVEN TOOL H=100mm	20
AXIAL GEARED-DOWN 2:1 DRIVEN TOOL H=100mm	21
AXIAL GEARED-UP 1:2 DRIVEN TOOL	21
AXIAL OPPOSITE FACE DRIVEN TOOL H=72mm	22
AXIAL OPPOSITE FACE DRIVEN TOOL H=85mm	22
AXIAL OPPOSITE FACE DRIVEN TOOL H=95mm	23
AXIAL OPPOSITE FACE DRIVEN TOOL H=100mm	23
AXIAL SINGLE SIDE TWIN HEAD DRIVEN TOOL IN Y H=100mm	24
0-180 ADJUSTABLE ANGLE DRIVEN TOOL H=54mm	25
0-180 ADJUSTABLE ANGLE DRIVEN TOOL WITH DIGITAL DISPLAY H=54mm	25
0-180 ADJUSTABLE ANGLE DRIVEN TOOL H=100mm	26
0-180 ADJUSTABLE ANGLE DRIVEN TOOL WITH DIGITAL DISPLAY H=100mm	26
0-180 ADJUSTABLE ANGLE DRIVEN TOOL H=72mm	27

0-180 ADJUSTABLE ANGLE DRIVEN TOOL WITH DIGITAL DISPLAY H=72mm	27
0-180 ADJUSTABLE ANGLE DRIVEN TOOL GEARED-UP 1:2 H=72mm	28
0-180 ADJUSTABLE ANGLE DRIVEN TOOL GEARED-UP 1:2 WITH DIGITAL DISPLAY H=72mm	28
DRIVEN GEAR HOBBER	29
GEAR HOBBER - REINFORCED	29
QUICK CHANGE AXIAL MTSK-40 DRIVEN TOOL FOR POWER SKIVING H=100mm	30
BROACHING/SLOTTING TOOL 50mm STROKE H=85mm	30
BROACHING/SLOTTING TOOL 50mm STROKE H=100mm	31
BROACHING/SLOTTING TOOL 25mm STROKE H=85mm	31
BROACHING/SLOTTING TOOL 25mm STROKE H=100mm	32
WORM GEAR DRIVEN TOOL	32

#### STATIC **33**

RADIAL STATIC HOLDER H=75mm	33
RADIAL STATIC HOLDER H=90mm	33
RADIAL DOUBLE STATIC HOLDER	33
RADIAL DOUBLE STATIC HOLDER H=75mm	34
RADIAL DOUBLE SIDE TWIN STATIC TOOL	34
RADIAL BLADE HOLDER WITH BLADE KIT	35
RADIAL BLADE HOLDER WITH INTERNAL COOLANT-BLADE KIT NOT INCLUDED	35
AXIAL STATIC TOOL	36
AXIAL SINGLE BORING BAR HOLDER	36
AXIAL SINGLE BORING BAR HOLDER H=72mm	37
AXIAL SINGLE BORING BAR HOLDER 40mm H=100mm	37
AXIAL SINGLE BORING BAR HOLDER 50mm H=100mm	37
AXIAL SINGLE BORING BAR HOLDER 60mm H=100mm	38
DOUBLE AXIAL 2+2 BORING BAR HOLDER	39
TAILSTOCK FOR SUBSPINDLE	39

#### DRIVEN **40**

RADIAL DRIVEN TOOL CAPTO C4	40
AXIAL DRIVEN TOOL CAPTO C4 H=72mm	40
AXIAL DRIVEN TOOL CAPTO C4 H=85mm	41
AXIAL DRIVEN TOOL CAPTO C4 H=95mm	41
AXIAL DRIVEN TOOL CAPTO C4 H=100mm	42
AXIAL OPPOSITE FACE TWIN DRIVEN TOOL CAPTO C4 H=85mm	42

#### STATIC **43**

RADIAL SINGLE REAR-SET STATIC TOOL CAPTO C4	43
RADIAL SINGLE REAR-SET STATIC TOOL CAPTO C6	43
AXIAL SINGLE STATIC TOOL CAPTO C4	44
AXIAL SINGLE STATIC TOOL CAPTO C6	44

### ACCESSORIES **45**

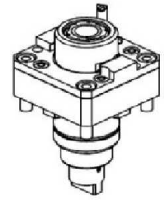
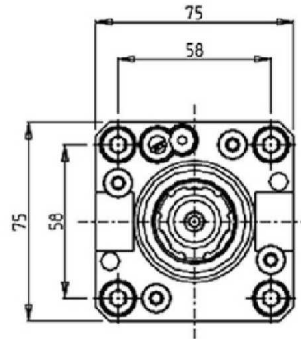
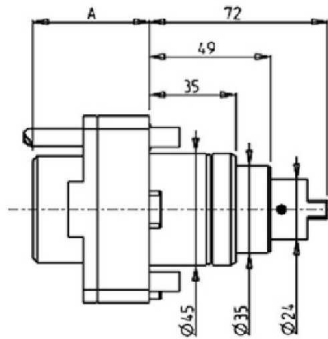
#### DRIVEN **45**

MTSK-32 ER ADAPTORS	45
MTSK-32 MILL ADAPTORS	46
MTSK-40 ER ADAPTORS	47
MTSK-40 MILL ADAPTORS	48
MTSK-50 MILL ADAPTORS	49
MTSK-50 SHELL & MILL HOLDERS	50
MTSK-63 CLAMPING UNITS ER	51
MTSK-63 CLAMPING UNITS MILL	52
POLYGON MAKING MILL HEAD (2 INSERTS)	53
POLYGON MAKING MILL HEAD (3 INSERTS)	53

**TC300 12 ST. - TC600 16 ST. - TTC300 12 ST. - TTS42/65 (BMT45 SHORT) - MICROTURN 36/52**

**DRIVEN**

**RADIAL DRIVEN TOOL**

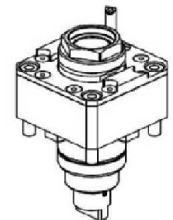
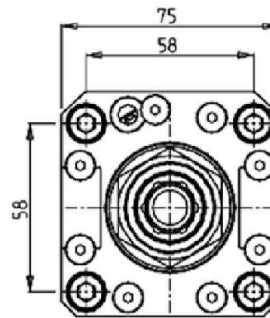
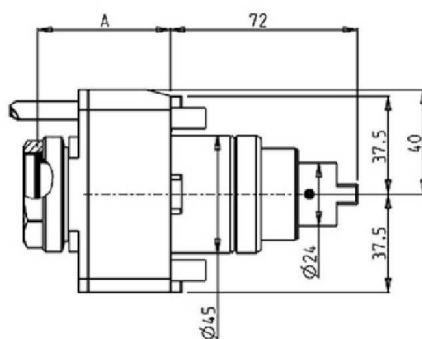


Part Number	Description	Spindle	I	RPM	Cool Thru	Ext Cool	A
SPN0010325	Radial Driven Tool ERA25	ERA25	1:1	6000		X	47.2
SPN0010425	Radial Driven Tool ERA25 Cool Thru*	ERA25	1:1	6000	X	X	54.7

\*Coolant Thru tools are designed for 400 psi MAX.  
They require 5 Micron Filtration and **CANNOT** be run dry.

**QUICK CHANGE RADIAL MTSK DRIVEN TOOL**

See Accessories for MTSK Quick Change Tool Holder Clamps



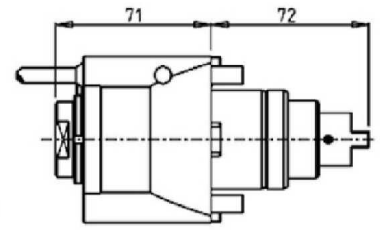
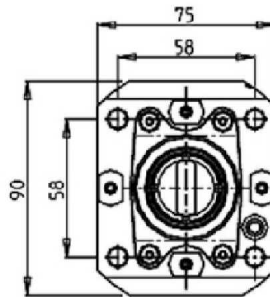
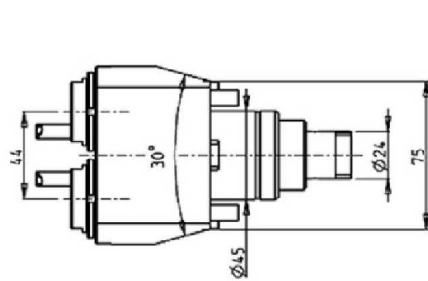
Part Number	Description	Spindle	I	RPM	Cool Thru	Ext Cool	A
SPN0090132	Radial MTSK-32 Driven Tool	MTSK-32	1:1	6000		X	51
SPN0090232	Radial MTSK-32 Driven Tool Cool Thru*	MTSK-32	1:1	6000	X	X	60

\* Coolant Thru tools are designed for 1000 psi.  
They require 5 Micron Filtration and **CANNOT** be run dry.

**TC300 12 ST. - TC600 16 ST. - TTC300 12 ST. - TTS42/65 (BMT45 SHORT) - MICROTURN 36/52**

**DRIVEN**

**RADIAL SINGLE SIDE TWIN HEAD DRIVEN TOOL IN Y**

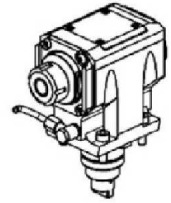
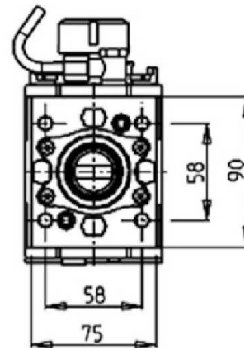
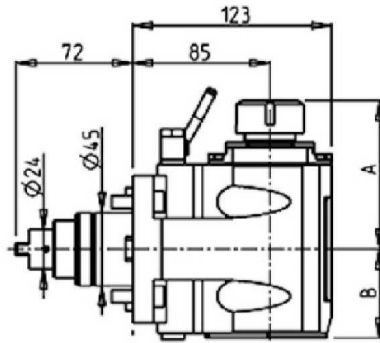


Part Number	Description	Spindle	I	RPM	Ext Cool
SPN0040216	Radial Single Side Twin ERA16	ERA16	1:1	6000	X

## TC300 12 ST. - TC600 16 ST. - TTC300 12 ST. - TTS42/65 (BMT45 SHORT) - MICROTURN 36/52

### DRIVEN

#### AXIAL DRIVEN TOOL

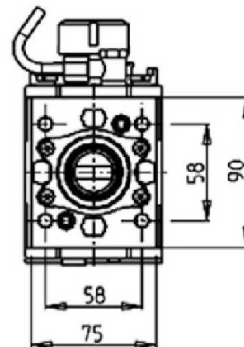
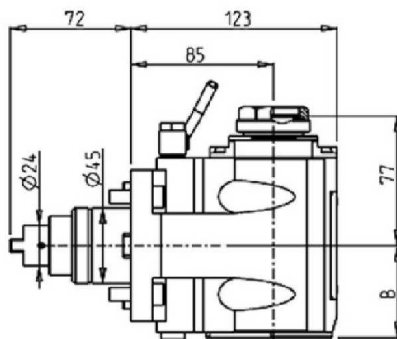
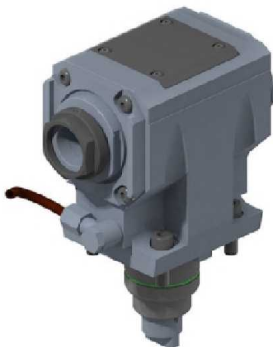


Part Number	Description	Spindle	I	RPM	Reversible	Cool Thru	Ext Cool	A	A1	B	D	L
SPN0020125	Axial Driven Tool ER25	ER25	1:1	6000	X		X	91.16		54.5		
SPN0020225	Axial Driven Tool ER25 Cool Thru*	ER25	1:1	6000	X	X	X	91.16		65.5		
SPN0020325	Axial Driven Tool ERA25	ERA25	1:1	6000	X		X	65		54.5		
SPN0020425	Axial Driven Tool ERA25 Cool Thru*	ERA25	1:1	6000	X	X	X	65		65.5		
SPN0020132	Axial Driven Tool ER32	ER32	1:1	6000	X		X	93.66		54.5		
SPN0020232	Axial Driven Tool ER32 Cool Thru*	ER32	1:1	6000	X	X	X	93.66		65.5		
SPN0020516	Axial Driven Tool $\phi 16 \times 17$	$\phi 16 \times 17$	1:1	6000	X		X		67.5	54.5	16	17
SPN0020522	Axial Driven Tool $\phi 22 \times 19$	$\phi 22 \times 19$	1:1	6000	X		X		67.5	54.5	22	19

\* Coolant Thru tools are designed for 1000 psi.  
They require 5 Micron Filtration and **CANNOT** be run dry.

#### QUICK CHANGE AXIAL MTSK DRIVEN TOOL

See Accessories for MTSK Quick Change Tool Holder Clamps



Part Number	Description	Spindle	I	RPM	Reversible	Cool Thru	Ext Cool	B
SPN0080132	Axial MTSK-32 Driven Tool	MTSK-32	1:1	6000	X		X	54.5
SPN0080232	Axial MTSK-32 Driven Tool Cool Thru*	MTSK-32	1:1	6000	X	X	X	65.5

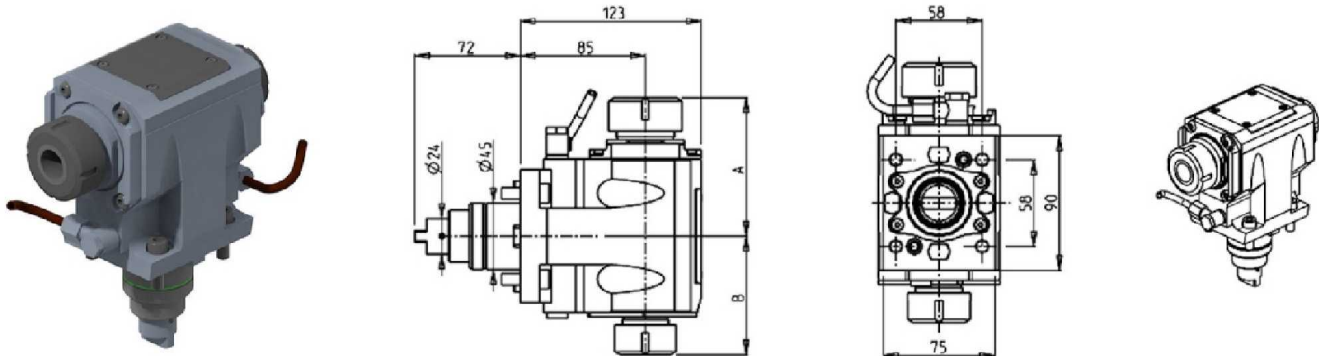
\* Coolant Thru tools are designed for 1000 psi.  
They require 5 Micron Filtration and **CANNOT** be run dry.



**TC300 12 ST. - TC600 16 ST. - TTC300 12 ST. - TTS42/65 (BMT45 SHORT) - MICROTURNS 36/52**

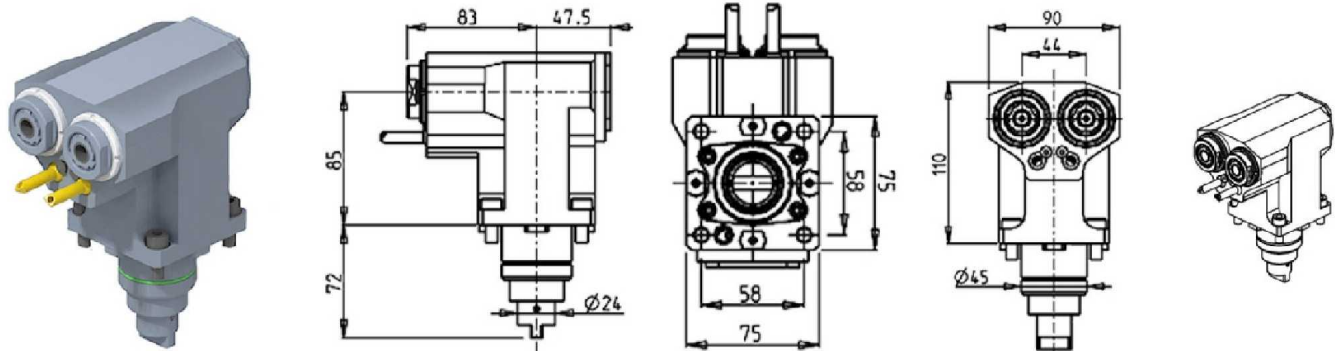
**DRIVEN**

**AXIAL OPPOSITE FACE TWIN DRIVEN TOOL**



Part Number	Description	Spindle	I	RPM	Reversible	Ext Cool	A	B
SPN0033225	Axial Opposite Face ER32+ER25	ER32+ER25	1:1	6000	X	X	93.66	80.16
SPN0032520	Axial Opposite Face ERA25+ERA20	ERA25+ERA20	1:1	6000	X	X	65	55.5

**AXIAL SINGLE SIDE TWIN HEAD DRIVEN TOOL IN Y**



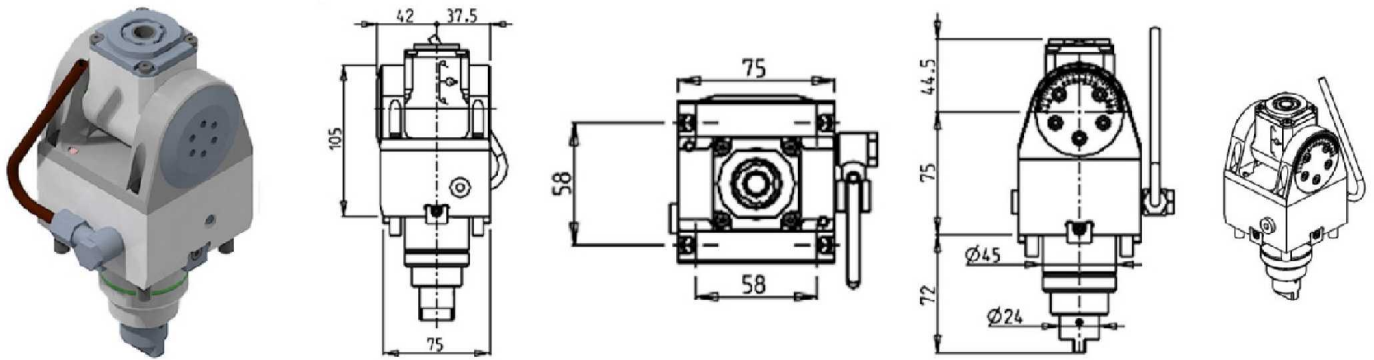
Part Number	Description	Spindle	I	RPM	Reversible	Ext Cool
SPN0050216	Axial Single Side Twin ERA16	ERA16	1:1	6000	X	X



**TC300 12 ST. - TC600 16 ST. - TTC300 12 ST. - TTS42/65 (BMT45 SHORT) - MICROTURN 36/52**

**DRIVEN**

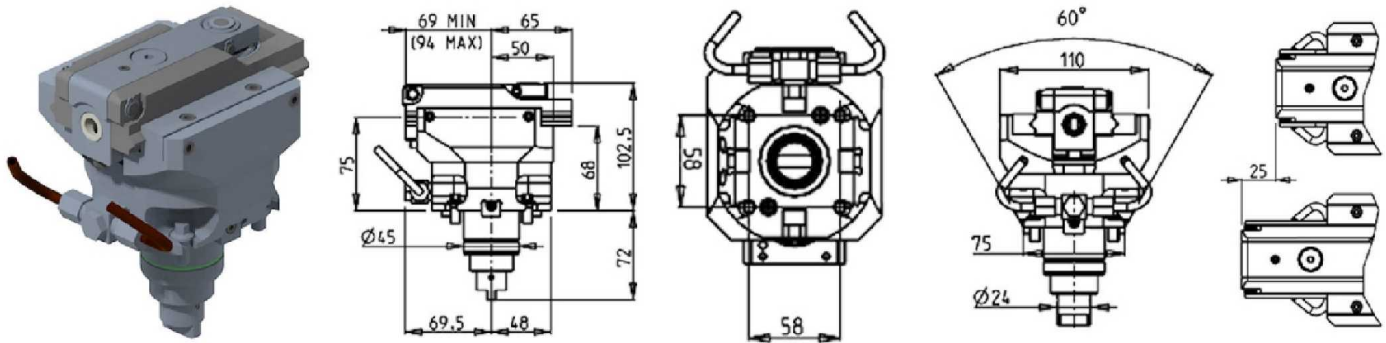
**(0-180) ADJUSTABLE ANGLE DRIVEN TOOL**



Part Number	Description	Spindle	I	RPM	Reversible	Ext Cool
SPN0070116	(0-180) Adj. Angle ERA16	ERA16	1:1	6000	X	X

**Note :** Wrenches are provided with the purchase of Specialty Toolholders

**BROACHING/SLOTTING DRIVEN TOOL 25mm STROKE H=75mm**

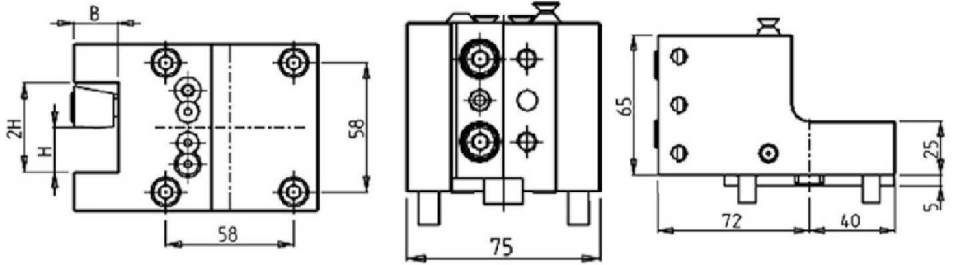
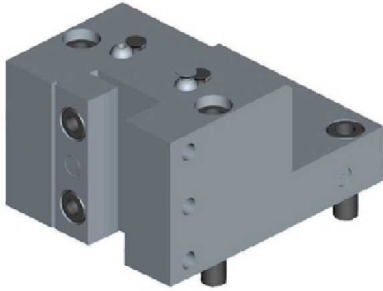


Part Number	Description	I	MAX RPM	Reversible	Ext Cool
SPN0060200	Broaching/Slotting Driven Tool 25mm Stroke	4:1	2400	X	X

**TC300 12 ST. - TC600 16 ST. - TTC300 12 ST. - TTS42/65 (BMT45 SHORT) - MICROTURN 36/52**

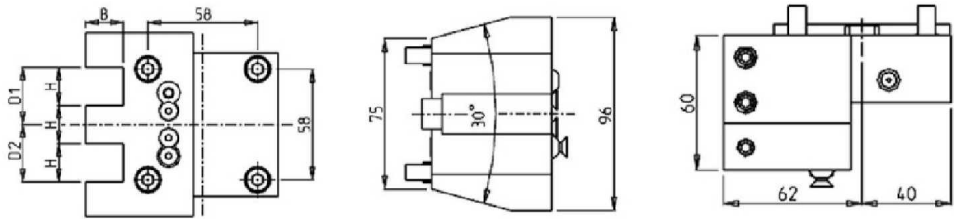
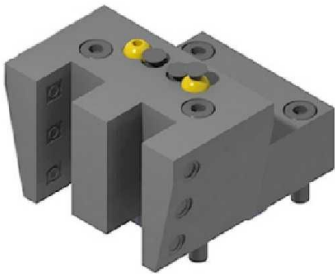
**STATIC**

**RADIAL SINGLE STATIC TOOL**



Part Number	Description	Reversible	Dimensions	B	H
DWO 2251905	Radial Single Static 3/4"	X	Inch	3/4"	3/4"
DWO 2252000	Radial Single Static 20mm	X	mm	20	20

**RADIAL SINGLE SIDE TWIN STATIC TOOL**

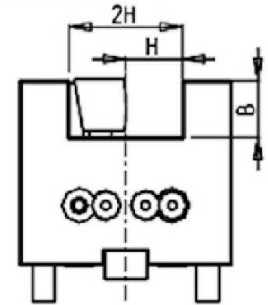
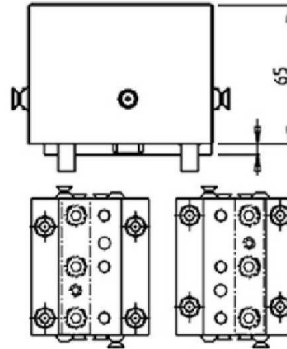
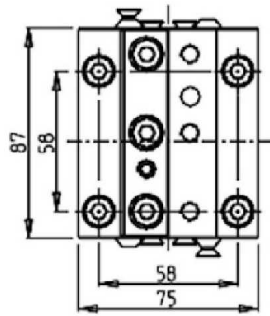


Part Number	Description	# of Tools	Reversible	Dimensions	H	B	D1	D2
DWO 1511905	Radial Single Side Twin Static 3/4"	2	X	Inch	3/4"	3/4"	1-1/8"	1-1/8"
DWO 1512000	Radial Single Side Twin Static 20mm	2	X	mm	20	20	30	30

**TC300 12 ST. - TC600 16 ST. - TTC300 12 ST. - TTS42/65 (BMT45 SHORT) - MICROTURN 36/52**

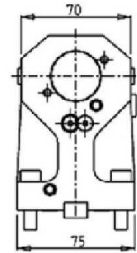
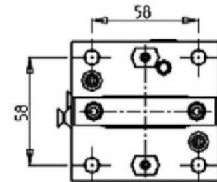
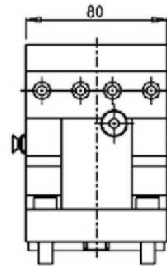
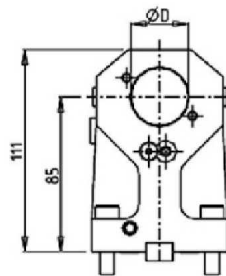
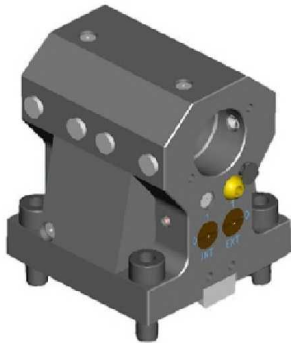
**STATIC**

**AXIAL SINGLE STATIC TOOL**



Part Number	Description	Reversible	Dimensions	B	H
DWO 2261905	Axial Single Static 3/4"	X	Inch	3/4"	3/4"
DWO 0282000	Axial Single Static 20mm	X	mm	20	20

**AXIAL SINGLE BORING BAR HOLDER H=85mm**

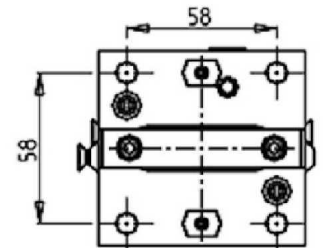
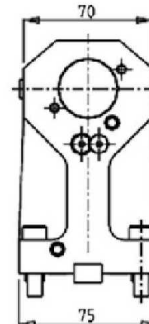
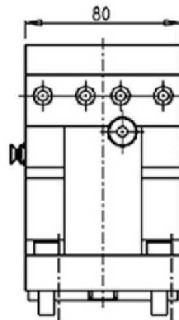
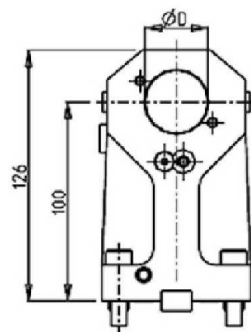


Part Number	Description	Reversible	Cool Thru	Ext Cool	Dimensions	D
DWO 2273175	Axial Single BBH 1-1/4"	X	X	X	Inch	1-1/4"
DWO 2273200	Axial Single BBH 32mm	X	X	X	mm	32
KIT 1000001	Plug for 32mm or 1 1/4" BBH to Make Cool Thru					

**TC300 12 ST. - TC600 16 ST. - TTC300 12 ST. - TTS42/65 (BMT45 SHORT)**

**STATIC**

**AXIAL SINGLE BORING BAR HOLDER H=100mm**

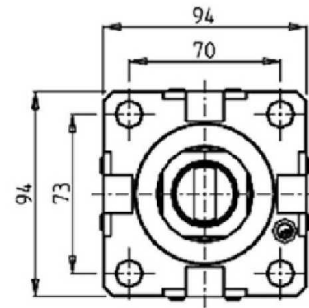
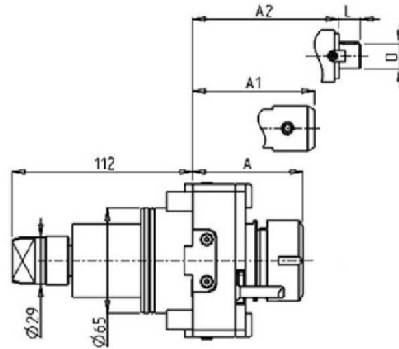
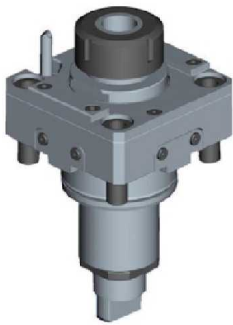


Part Number	Description	Reversible	Cool Thru	Ext Cool	Dimensions	D
DWO 2283175	Axial Single BBH 1-1/4"	X	X	X	Inch	1-1/4"
DWO 2283200	Axial Single BBH 32mm	X	X	X	mm	32
KIT 1000001	Plug for 32mm or 1 1/4" BBH to Make Cool Thru					

## TC800 SMCY (BMT65)

### DRIVEN

#### RADIAL REINFORCED DRIVEN TOOL

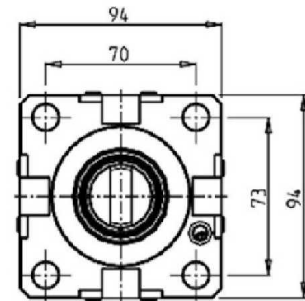
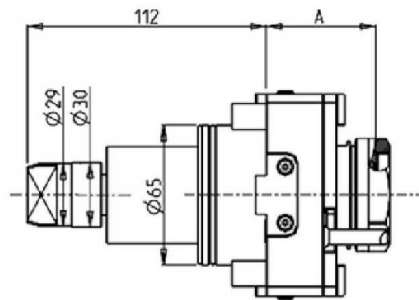
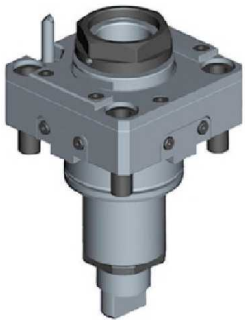


Part Number	Description	Spindle	I	RPM	Cool Thru	Ext. Cool	A	A1	A2	D	L
DWO 1540132	Radial Reinforced ER32	ER32	1:1	6000		X	68.7				
DWO 1540232	Radial Reinforced ER32 Cool Thru*	ER32	1:1	6000	X	X	79.2				
DWO 1540140	Radial Reinforced ER40	ER40	1:1	6000		X	71.7				
DWO 1540240	Radial Reinforced ER40 Cool Thru*	ER40	1:1	6000	X	X	82.2				
DWO 1540827	Radial Reinforced 27x21mm Cool Thru*	27x21	1:1	6000	X	X				56.5	27 21
DWO 1540625	Radial Reinforced Weldon 25 Cool Thru*	Weldon 25	1:1	6000	X	X				72.5	

\*Coolant Thru tools are designed for 400 psi MAX.  
They require 5 Micron Filtration and **CANNOT** be run dry.

#### QUICK CHANGE RADIAL MTSK REINFORCED DRIVEN TOOL

See Accessories for MTSK Quick Change Tool Holder Clamps



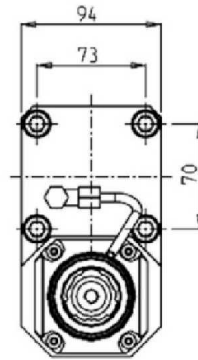
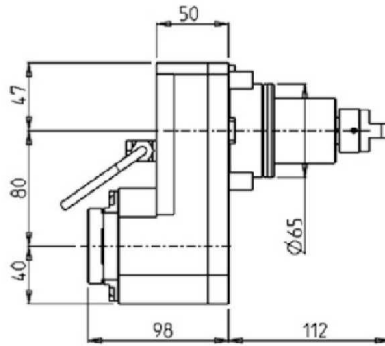
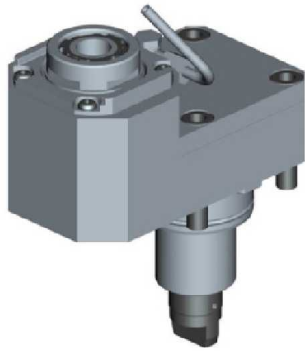
Part Number	Description	Spindle	I	RPM	Cool Thru	Ext. Cool	A
DWO 1550140	Radial MTSK-40 Reinforced	MTSK-40	1:1	6000		X	51.5
DWO 1550240	Radial MTSK-40 Reinforced Cool Thru*	MTSK-40	1:1	6000	X	X	62.5
DWO 1550150	Radial MTSK-50 Reinforced	MTSK-50	1:1	6000		X	51.5
DWO 1550250	Radial MTSK-50 Reinforced Cool Thru*	MTSK-50	1:1	6000	X	X	62.5

\*Coolant Thru tools are designed for 400 psi MAX.  
They require 5 Micron Filtration and **CANNOT** be run dry.

## TC800 SMCY (BMT65)

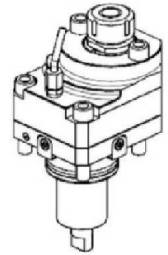
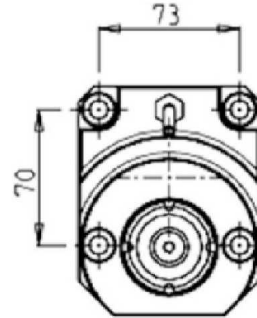
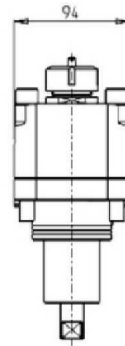
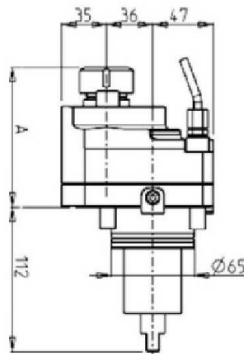
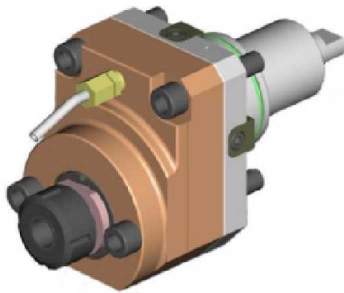
### DRIVEN

#### RADIAL GEARED-DOWN 2:1 DRIVEN TOOL REDIRECTED IN Z BY 80mm



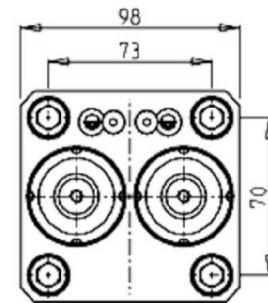
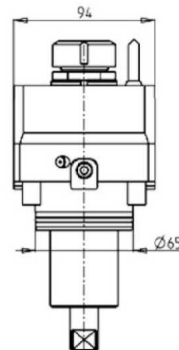
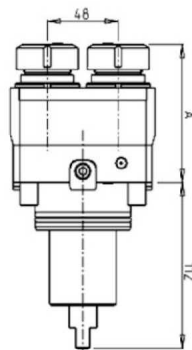
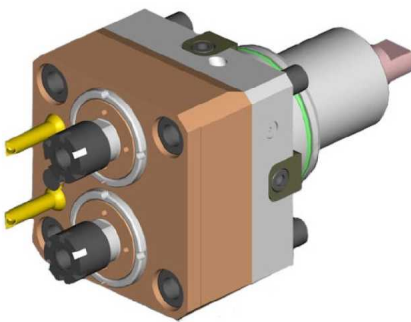
Part Number	Description	Spindle	I	RPM	Reversible	Ext. Cool
DWO 1580332	Radial Geared-Down 2:1 Redirected 80mm in Z	ERA32	2:1	3000	X	X

#### RADIAL GEARED-UP 1:2 DRIVEN TOOL REDIRECTED IN Z BY 36mm



Part Number	Description	Spindle	I	RPM	Reversible	Ext. Cool	A
DWO 0140125	Geared-Up 1:2 Redirected 36mm ER25	ER25	1:2	12000	X	X	108.56

#### RADIAL SINGLE-SIDE TWIN HEAD DRIVEN TOOL IN Y-AXIS

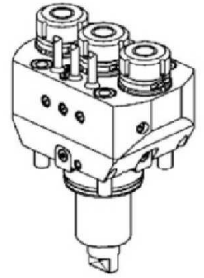
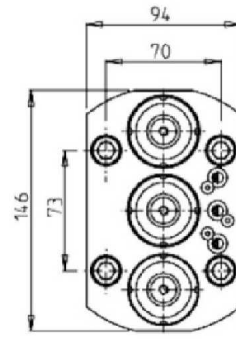
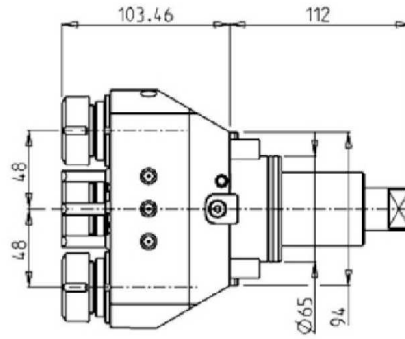
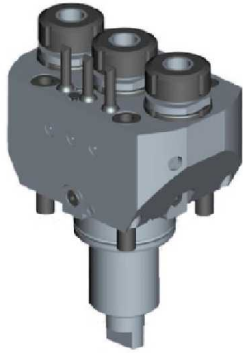


Part Number	Description	Spindle	I	RPM	Ext. Cool	A
DWO 0540216	Radial Y-Axis Double Outlet ER16	ER16	1:1	6000	X	84.5
DWO 0540225	Radial Y-Axis Double Outlet ER25	ER25	1:1	6000	X	85

## TC800 SMCY (BMT65)

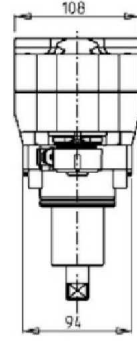
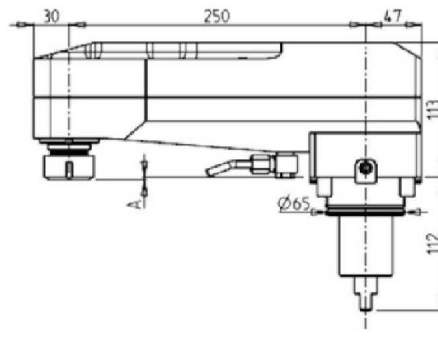
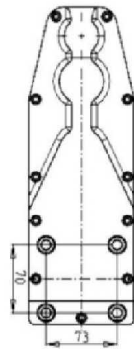
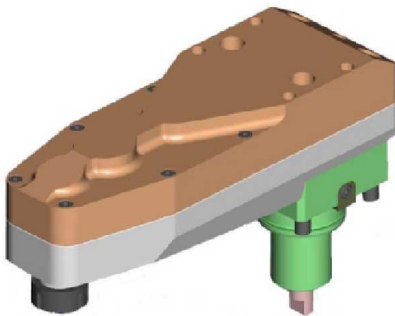
### DRIVEN

#### RADIAL SINGLE SIDE 3 OUTLET DRIVEN TOOL IN Y



Part Number	Description	Spindle	I	RPM	Ext. Cool
DWO 1350325	Radial ER25 Single Side 3 Outlet in Y	ER25	1:1	6000	X

#### RADIAL INVERTED DRIVEN TOOL 250mm INTERAXIS



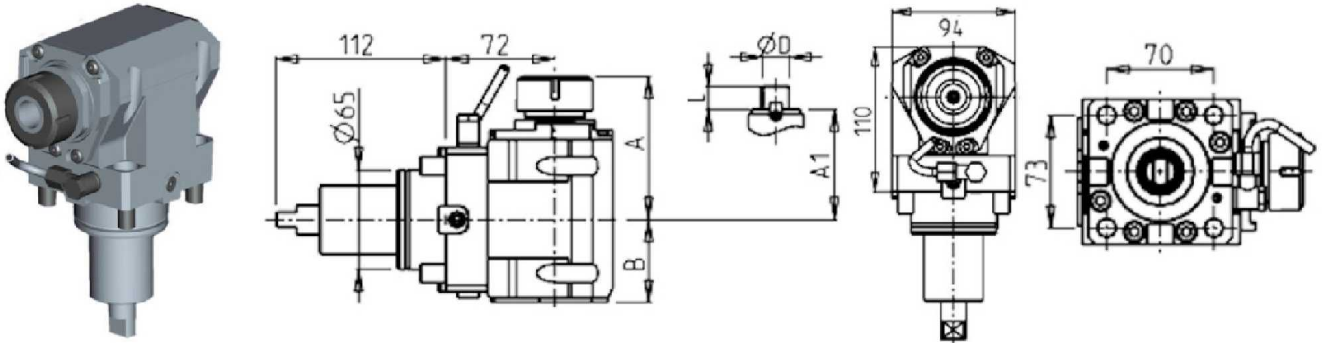
Part Number	Description	Spindle	I	RPM	Ext. Cool	A
0700025	Radial Inverted 250mm Interaxis ER25	ER25	1:2	12000	X	2.16
0700032	Radial Inverted 250mm Interaxis ER32	ER32	1:2	12000	X	14.66



## TC800 SMCY (BMT65)

### DRIVEN

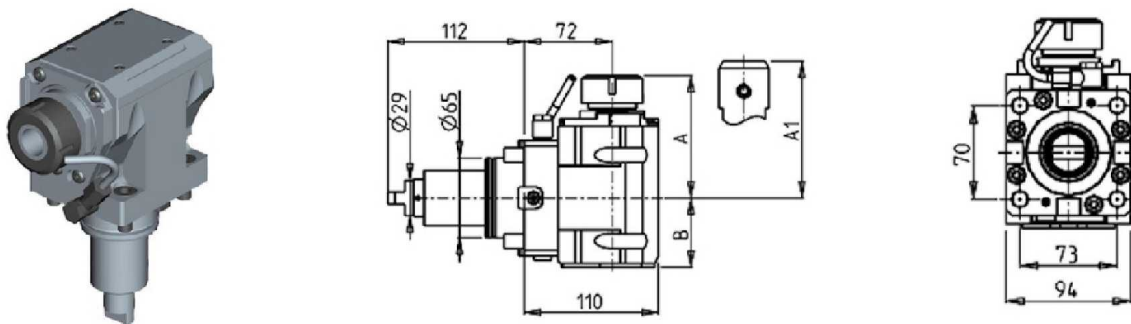
#### AXIAL DRIVEN TOOL H=72mm



Part Number	Description	Spindle	Reversible	I	RPM	Cool Thru	Ext. Cool	A	A1	B	D	L
DWO 0700125	Axial ER25 H=72mm	ER25	X	1:1	6000		X	91.16		54		
DWO 0700225	Axial ER25 H=72mm Cool Thru*	ER25	X	1:1	6000	X	X	91.16		65		
DWO 0700325	Axial ERA25 H=72mm	ERA25	X	1:1	6000		X	65		54		
DWO 0700425	Axial ERA25 H=72mm Cool Thru*	ERA25	X	1:1	6000	X	X	65		65		
DWO 0700132	Axial ER32 H=72mm	ER32	X	1:1	6000		X	93.66		54		
DWO 0700232	Axial ER32 H=72mm Cool Thru*	ER32	X	1:1	6000	X	X	93.66		65		
DWO 0700140	Axial ER40 H=72mm	ER40	X	1:1	6000		X	98.16		54		
DWO 0700240	Axial ER40 H=72mm Cool Thru*	ER40	X	1:1	6000	X	X	98.16		65		
DWO 0700516	Axial Mill Head D=16mm, L=17mm	16x17	X	1:1	6000		X		67.5	54	16	17
DWO 0700522	Axial Mill Head D=22mm, L=19mm	22x19	X	1:1	6000		X		67.5	54	22	19
DWO 0700527	Axial Mill Head D=27mm, L=21mm	27x21	X	1:1	6000		X		70	54	27	21

\* Coolant Thru tools are designed for 1000 psi.  
They require 5 Micron Filtration and **CANNOT** be run dry.

#### AXIAL REINFORCED DRIVEN TOOL H=72mm



Part Number	Description	Spindle	I	RPM	Reversible	Cool Thru	Ext Cool	A	A1	B
DWO 2470132	Axial Reinforced ER32	ER32	1:1	6000	X		X	99.7		56.5
DWO 2470232	Axial Reinforced ER32 Cool Thru*	ER32	1:1	6000	X	X	X	99.7		67.5
DWO 2470725	Axial Reinforced Weldon 25	Weldon 25	1:1	6000	X		X			106 56.5
DWO 2470825	Axial Reinforced Weldon 25 Cool Thru*	Weldon 25	1:1	6000	X	X	X			106 67.5

\* Coolant Thru tools are designed for 1000 psi.  
They require 5 Micron Filtration and **CANNOT** be run dry.

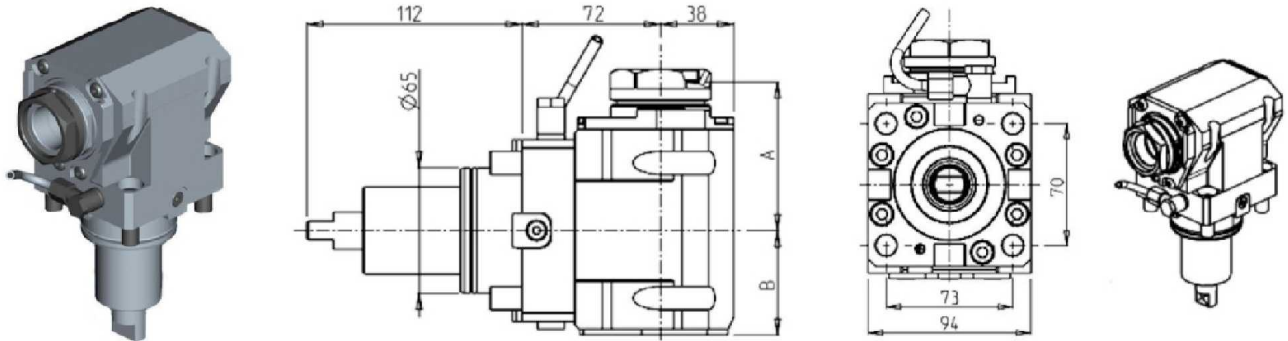


## TC800 SMCY (BMT65)

### DRIVEN

#### QUICK CHANGE AXIAL MTSK DRIVEN TOOL H=72mm

See Accessories for MTSK Quick Change Tool Holder Clamps

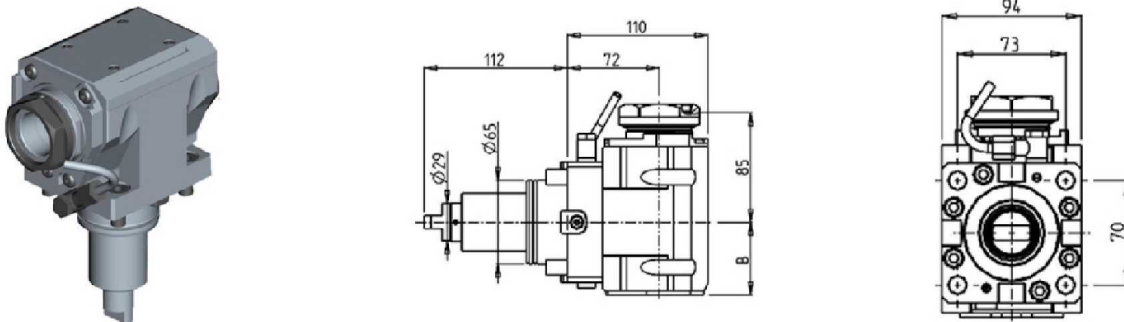


Part Number	Description	Spindle	Reversible	I	RPM	Cool Thru	Ext. Cool	A	B
DWO 1170140	Axial MTSK-40 H=72mm	MTSK-40	X	1:1	6000		X	77	54
DWO 1170240	Axial MTSK-40 H=72mm Cool Thru*	MTSK-40	X	1:1	6000	X	X	77	65
DWO 1170150	Axial MTSK-50 H=72mm	MTSK-50	X	1:1	6000		X	79	54
DWO 1170250	Axial MTSK-50 H=72mm Cool Thru*	MTSK-50	X	1:1	6000	X	X	79	65

\* Coolant Thru tools are designed for 1000 psi.  
They require 5 Micron Filtration and **CANNOT** be run dry.

#### QUICK CHANGE AXIAL MTSK REINFORCED DRIVEN TOOL H=72mm

See Accessories for MTSK Quick Change Tool Holder Clamps



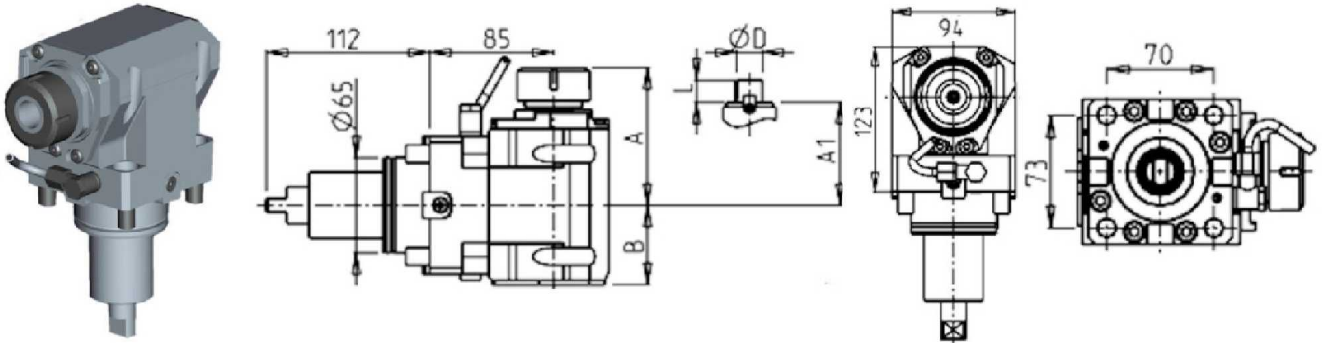
Part Number	Description	Spindle	I	RPM	Reversible	Cool Thru	Ext Cool	B
DWO 2180150	Axial MTSK-50 H=72mm	MTSK-50	1:1	6000	X		X	56.5
DWO 2180250	Axial MTSK-50 H=72mm Cool Thru*	MTSK-50	1:1	6000	X	X	X	67.5

\* Coolant Thru tools are designed for 1000 psi.  
They require 5 Micron Filtration and **CANNOT** be run dry.

## TC800 SMCY (BMT65)

### DRIVEN

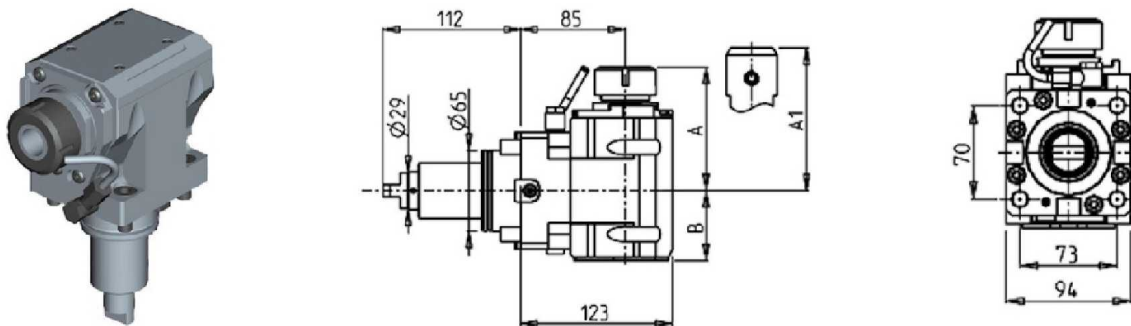
#### AXIAL DRIVEN TOOL H=85mm



Part Number	Description	Spindle	Reversible	I	RPM	Cool Thru	Ext. Cool	A	A1	B	D	L
DWO 1130125	Axial ER25 H=85mm	ER25	X	1:1	6000		X	91.16		54		
DWO 1130225	Axial ER25 H=85mm Cool Thru*	ER25	X	1:1	6000	X	X	91.16		65		
DWO 1130325	Axial ERA25 H=85mm	ERA25	X	1:1	6000		X	65		54		
DWO 1130425	Axial ERA25 H=85mm Cool Thru*	ERA25	X	1:1	6000	X	X	65		65		
DWO 1130132	Axial ER32 H=85mm	ER32	X	1:1	6000		X	93.66		54		
DWO 1130232	Axial ER32 H=85mm Cool Thru*	ER32	X	1:1	6000	X	X	93.66		65		
DWO 1130140	Axial ER40 H=85mm	ER40	X	1:1	6000		X	98.16		54		
DWO 1130240	Axial ER40 H=85mm Cool Thru*	ER40	X	1:1	6000	X	X	98.16		65		
DWO 1130516	Axial Mill Head D=16mm, L=17mm	16x17	X	1:1	6000		X		67.5	54	16	17
DWO 1130522	Axial Mill Head D=22mm, L=19mm	22x19	X	1:1	6000		X		67.5	54	22	19
DWO 1130527	Axial Mill Head D=27mm, L=21mm	27x21	X	1:1	6000		X		70	54	27	21

\* Coolant Thru tools are designed for 1000 psi.  
They require 5 Micron Filtration and **CANNOT** be run dry.

#### AXIAL REINFORCED DRIVEN TOOL H=85mm



Part Number	Description	Spindle	I	RPM	Reversible	Cool Thru	Ext Cool	A	A1	B
DWO 2480132	Axial Reinforced ER32	ER32	1:1	6000	X		X	99.7		56.5
DWO 2480232	Axial Reinforced ER32 Cool Thru*	ER32	1:1	6000	X	X	X	99.7		67.5
DWO 2480725	Axial Reinforced Weldon 25	Weldon 25	1:1	6000	X		X			106
DWO 2480825	Axial Reinforced Weldon 25 Cool Thru*	Weldon 25	1:1	6000	X	X	X			106

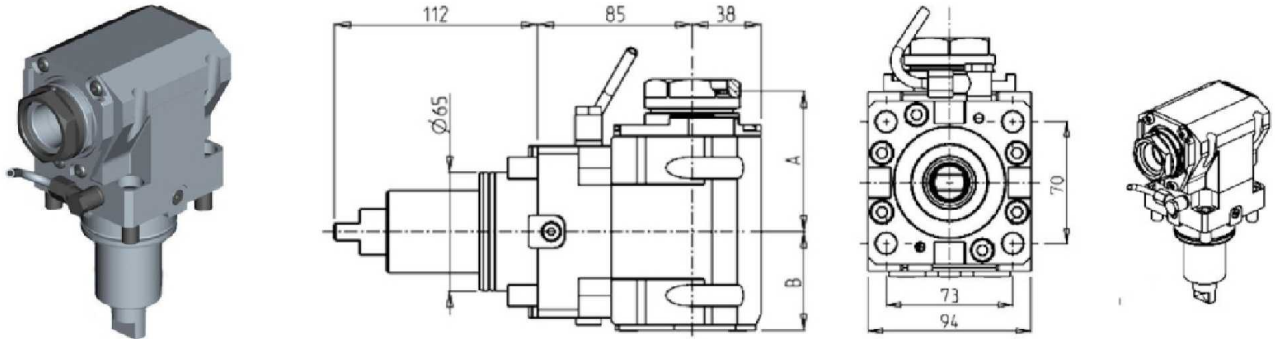
\* Coolant Thru tools are designed for 1000 psi.  
They require 5 Micron Filtration and **CANNOT** be run dry.

## TC800 SMCY (BMT65)

### DRIVEN

#### QUICK CHANGE AXIAL MTSK DRIVEN TOOL H=85mm

See Accessories for MTSK Quick Change Tool Holder Clamps

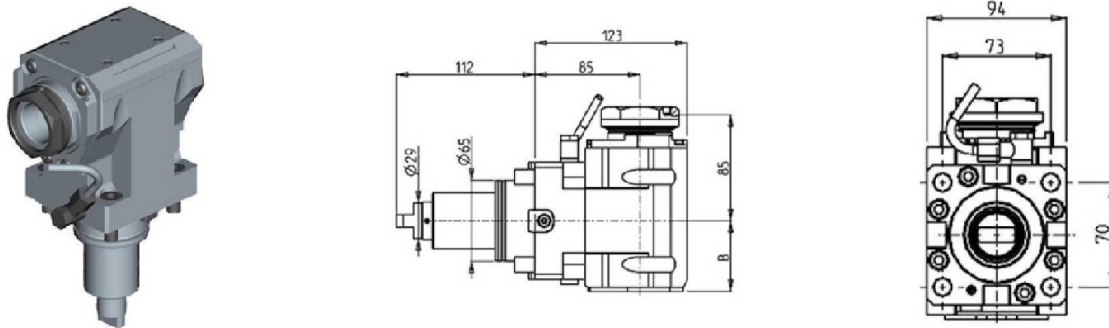


Part Number	Description	Spindle	Reversible	I	RPM	Cool Thru	Ext. Cool	A	B
DWO 1180140	Axial MTSK-40 H=85mm	MTSK-40	X	1:1	6000		X	77	54
DWO 1180240	Axial MTSK-40 H=85mm Cool Thru*	MTSK-40	X	1:1	6000	X	X	77	65
DWO 1180150	Axial MTSK-50 H=85mm	MTSK-50	X	1:1	6000		X	79	54
DWO 1180250	Axial MTSK-50 H=85mm Cool Thru*	MTSK-50	X	1:1	6000	X	X	79	65

\* Coolant Thru tools are designed for 1000 psi.  
They require 5 Micron Filtration and **CANNOT** be run dry.

#### QUICK CHANGE AXIAL MTSK REINFORCED DRIVEN TOOL H=85mm

See Accessories for MTSK Quick Change Tool Holder Clamps



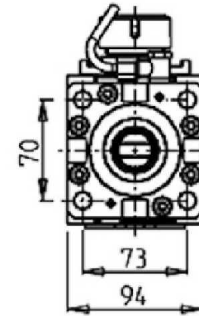
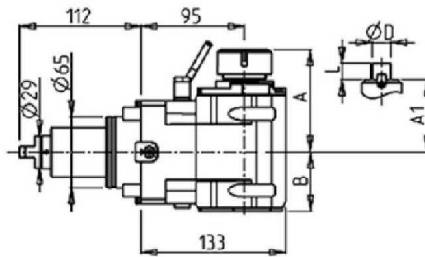
Part Number	Description	Spindle	I	RPM	Reversible	Cool Thru	Ext Cool	B
DWO 2190150	Axial MTSK-50 H=85mm	MTSK-50	1:1	6000	X		X	56.5
DWO 2190250	Axial MTSK-50 H=85mm Cool Thru*	MTSK-50	1:1	6000	X	X	X	67.5

\* Coolant Thru tools are designed for 1000 psi.  
They require 5 Micron Filtration and **CANNOT** be run dry.

## TC800 SMCY (BMT65)

### DRIVEN

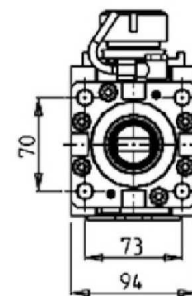
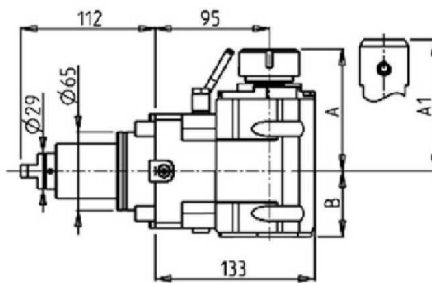
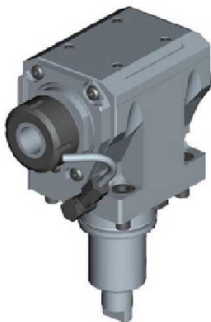
#### AXIAL DRIVEN TOOL H=95mm



Part Number	Description	Spindle	I	RPM	Reversible	Cool Thru	Ext Cool	A	A1	B	D	L
DWO 2510325	Axial ERA25 H=95mm	ERA25	1:1	6000	X		X	65		54		
DWO 2510425	Axial ERA25 H=95mm Cool Thru*	ERA25	1:1	6000	X	X	X	65		65		
DWO 2510125	Axial ER25 H=95mm	ER25	1:1	6000	X		X	91.2		54		
DWO 2510225	Axial ER25 H=95mm Cool Thru*	ER25	1:1	6000	X	X	X	91.2		65		
DWO 2510132	Axial ER32 H=95mm	ER32	1:1	6000	X		X	93.7		54		
DWO 2510232	Axial ER32 H=95mm Cool Thru*	ER32	1:1	6000	X	X	X	93.7		65		
DWO 2510140	Axial ER40 H=95mm	ER40	1:1	6000	X		X	98.2		54		
DWO 2510240	Axial ER40 H=95mm Cool Thru*	ER40	1:1	6000	X	X	X	98.2		65		
DWO 2510516	Axial 16x17mm H=95mm	16x17	1:1	6000	X		X		67.5	54	16	17
DWO 2510522	Axial 22x19mm H=95mm	22x19	1:1	6000	X		X		67.5	54	22	19
DWO 2510527	Axial 27x21mm H=95mm	27x21	1:1	6000	X		X		70	54	27	21

\* Coolant Thru tools are designed for 1000 psi.  
They require 5 Micron Filtration and **CANNOT** be run dry.

#### AXIAL REINFORCED DRIVEN TOOL H=95mm



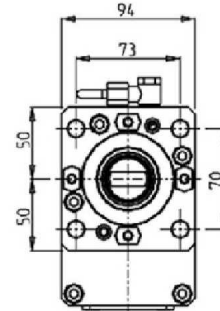
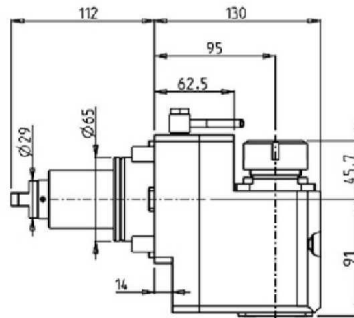
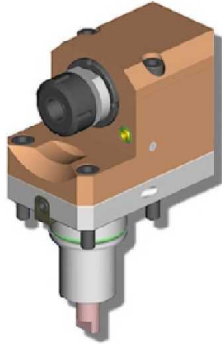
Part Number	Description	Spindle	I	RPM	Reversible	Cool Thru	Ext Cool	A	A1	B
DWO 2500132	Axial Reinforced ER32	ER32	1:1	6000	X		X	99.7		56.5
DWO 2500232	Axial Reinforced ER32 Cool Thru*	ER32	1:1	6000	X	X	X	99.7		67.5
DWO 2500725	Axial Reinforced Weldon 25	Weldon 25	1:1	6000	X		X			106 56.5
DWO 2500825	Axial Reinforced Weldon 25 Cool Thru*	Weldon 25	1:1	6000	X	X	X			106 67.5

\* Coolant Thru tools are designed for 1000 psi.  
They require 5 Micron Filtration and **CANNOT** be run dry.

## TC800 SMCY (BMT65)

### DRIVEN

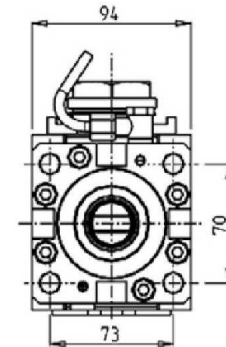
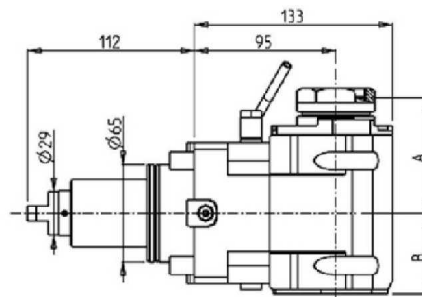
#### AXIAL REAR-SET DRIVEN TOOL H=95mm



Part Number	Description	Spindle	I	RPM	Reversible	Ext Cool
DWO 2570132	Axial Rear-Set ER32	ER32	1:1	6000	X	X

#### QUICK CHANGE AXIAL MTSK DRIVEN TOOL H=95mm

See Accessories for MTSK Quick Change Tool Holder Clamps



Part Number	Description	Spindle	I	RPM	Reversible	Cool Thru	Ext Cool	A	B
DWO 2530140	Axial MTSK-40 H=95mm	MTSK-40	1:1	6000	X		X	77	54
DWO 2530240	Axial MTSK-40 H=95mm Cool Thru*	MTSK-40	1:1	6000	X	X	X	77	65
DWO 2530150	Axial MTSK-50 H=95mm	MTSK-50	1:1	6000	X		X	79	54
DWO 2530250	Axial MTSK-50 H=95mm Cool Thru*	MTSK-50	1:1	6000	X	X	X	79	65

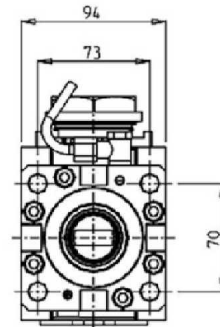
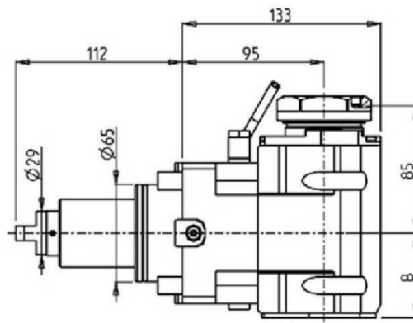
\* Coolant Thru tools are designed for 1000 psi.  
They require 5 Micron Filtration and **CANNOT** be run dry.

## TC800 SMCY (BMT65)

### DRIVEN

#### QUICK CHANGE AXIAL MTSK REINFORCED DRIVEN TOOL H=95mm

See Accessories for MTSK Quick Change Tool Holder Clamps



Part Number	Description	Spindle	I	RPM	Reversible	Cool Thru	Ext Cool	B
DWO 2540150	Axial Reinforced MTSK-50	MTSK-50	1:1	6000	X		X	56.5
DWO 2540250	Axial Reinforced MTSK-50 Cool Thru*	MTSK-50	1:1	6000	X	X	X	67.5

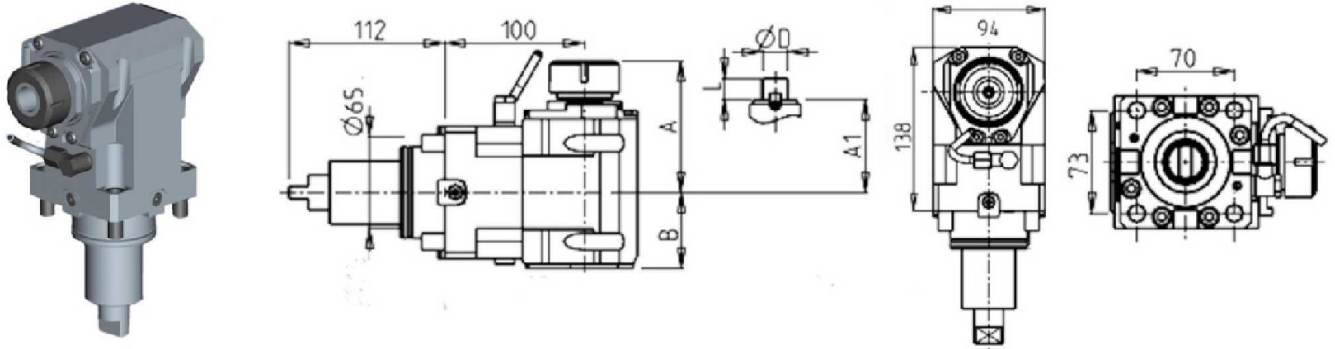
\* Coolant Thru tools are designed for 1000 psi.  
They require 5 Micron Filtration and **CANNOT** be run dry.



## TC800 SMCY (BMT65)

### DRIVEN

#### AXIAL DRIVEN TOOL H=100mm



Part Number	Description	Spindle	I	RPM	Reversible	Cool Thru	Ext Cool	A	A1	B	D	L
DWO 1140125	Axial ER25 H=100mm	ER25	1:1	6000	X		X	91.16		54		
DWO 1140225	Axial ER25 H=100mm Cool Thru*	ER25	1:1	6000	X	X	X	91.16		65		
DWO 1140325	Axial ERA25 H=100mm	ERA25	1:1	6000	X		X	65		54		
DWO 1140425	Axial ERA25 H=100mm Cool Thru*	ERA25	1:1	6000	X	X	X	65		65		
DWO 1140132	Axial ER32 H=100mm	ER32	1:1	6000	X		X	93.66		54		
DWO 1140232	Axial ER32 H=100mm Cool Thru*	ER32	1:1	6000	X	X	X	93.66		65		
DWO 1140140	Axial ER40 H=100mm	ER40	1:1	6000	X		X	98.16		54		
DWO 1140240	Axial ER40 H=100mm Cool Thru*	ER40	1:1	6000	X	X	X	98.16		65		
DWO 1140516	Axial Mill Head 16x17mm H=100mm	16x17	1:1	6000	X		X		67.5	54	16	17
DWO 1140522	Axial Mill Head 22x19mm H=100mm	22x19	1:1	6000	X		X		67.5	54	22	19
DWO 1140527	Axial Mill Head 27x21mm H=100mm	27x21	1:1	6000	X		X		70	54	27	21

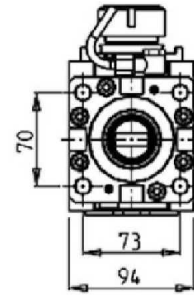
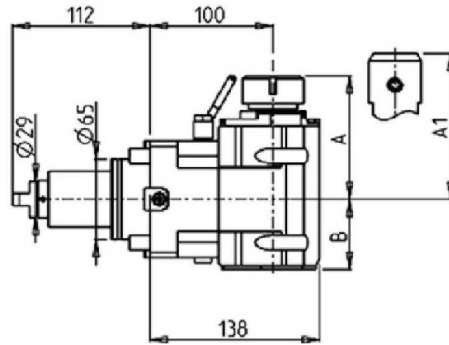
\* Coolant Thru tools are designed for 1000 psi.  
They require 5 Micron Filtration and **CANNOT** be run dry.



## TC800 SMCY (BMT65)

### DRIVEN

#### AXIAL REINFORCED DRIVEN TOOL H=100mm



Part Number	Description	Spindle	I	RPM	Reversible	Cool Thru	Ext Cool	A	A1	B
DWO 2490132	Axial Reinforced ER32	ER32	1:1	6000	X		X	99.7		56.5
DWO 2490232	Axial Reinforced ER32 Cool Thru*	ER32	1:1	6000	X	X	X	99.7		67.5
DWO 2490725	Axial Reinforced Weldon 25	Weldon 25	1:1	6000	X		X		106	56.5
DWO 2490825	Axial Reinforced Weldon 25 Cool Thru*	Weldon 25	1:1	6000	X	X	X		106	67.5

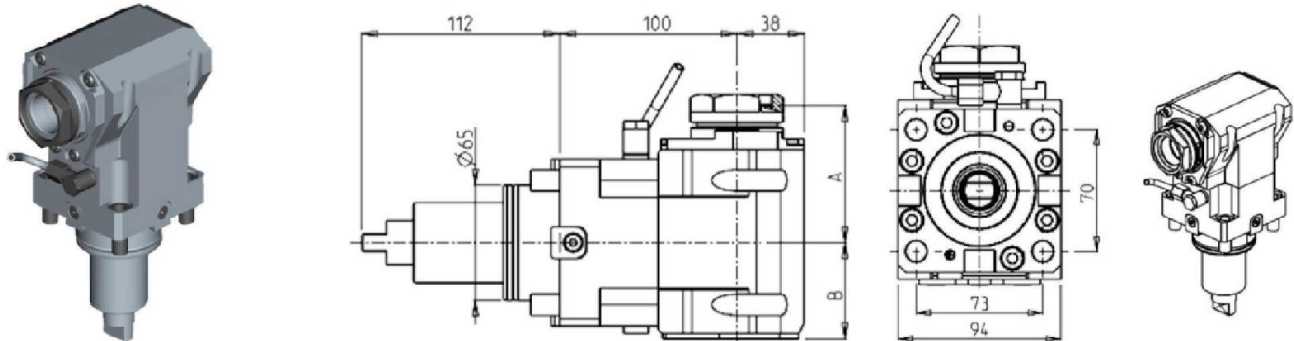
\* Coolant Thru tools are designed for 1000 psi.  
They require 5 Micron Filtration and **CANNOT** be run dry.

## TC800 SMCY (BMT65)

### DRIVEN

#### QUICK CHANGE AXIAL MTSK DRIVEN TOOL H=100mm

See Accessories for MTSK Quick Change Tool Holder Clamps

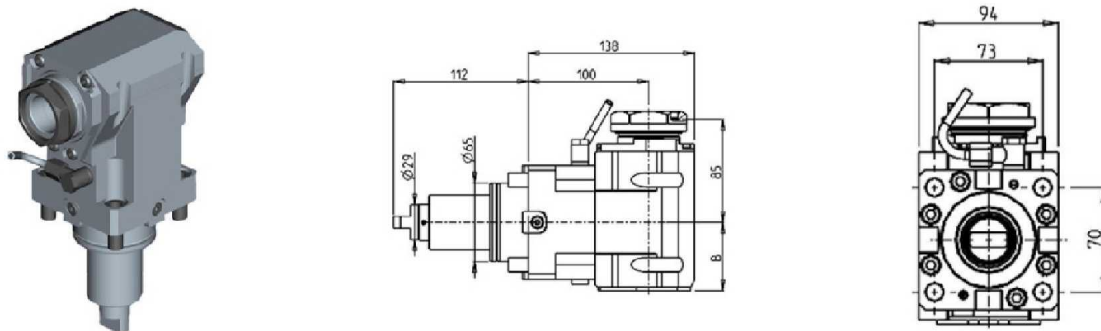


Part Number	Description	Spindle	Reversible	I	RPM	Cool Thru	Ext. Cool	A	B
DWO 1190140	Axial MTSK-40 H=100mm	MTSK-40	X	1:1	6000		X	77	54
DWO 1190240	Axial MTSK-40 H=100mm Cool Thru*	MTSK-40	X	1:1	6000	X	X	77	65
DWO 1190150	Axial MTSK-50 H=100mm	MTSK-50	X	1:1	6000		X	79	54
DWO 1190250	Axial MTSK-50 H=100mm Cool Thru*	MTSK-50	X	1:1	6000	X	X	79	65

\* Coolant Thru tools are designed for 1000 psi.  
They require 5 Micron Filtration and **CANNOT** be run dry.

#### QUICK CHANGE AXIAL MTSK REINFORCED DRIVEN TOOL H=100mm

See Accessories for MTSK Quick Change Tool Holder Clamps



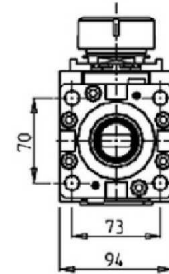
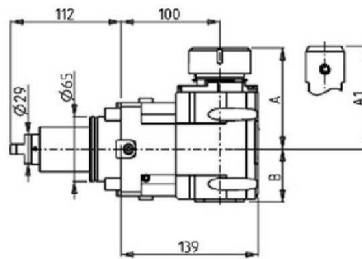
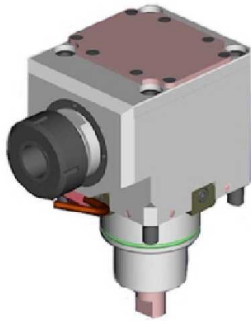
Part Number	Description	Spindle	I	RPM	Reversible	Cool Thru	Ext Cool	B
DWO 2200150	Axial MTSK-50 H=100mm	MTSK-50	1:1	6000	X		X	56.5
DWO 2200250	Axial MTSK-50 H=100mm Cool Thru*	MTSK-50	1:1	6000	X	X	X	67.5

\* Coolant Thru tools are designed for 1000 psi.  
They require 5 Micron Filtration and **CANNOT** be run dry.

## TC800 SMCY (BMT65)

### DRIVEN

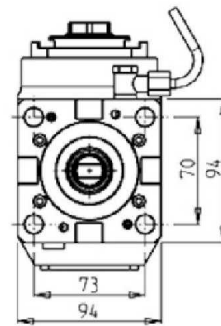
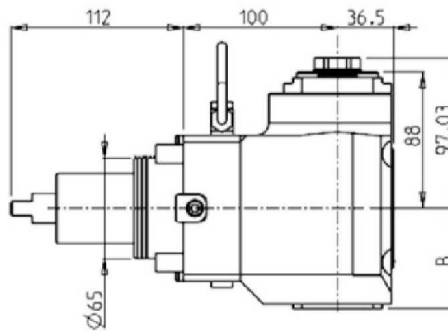
#### AXIAL GEARED-DOWN 2:1 DRIVEN TOOL H=100mm



Part Number	Description	Spindle	I	RPM	Reversible	Cool Thru	Ext Cool	A	A1	B
DWO 2360132	Axial Geared-Down 2:1 ER32	ER32	2:1	3000	X		X	98.7		53
DWO 2360232	Axial Geared-Down 2:1 ER32 Cool Thru	ER32	2:1	3000	X	X	X	98.7		66.5
DWO 2360140	Axial Geared-Down 2:1 ER40	ER40	2:1	3000	X		X	101.7		53
DWO 2360240	Axial Geared-Down 2:1 ER40 Cool Thru	ER40	2:1	3000	X	X	X	101.7		66.5
DWO 2360725	Axial Geared-Down 2:1 WELDON 25	WELDON25	2:1	3000	X		X		106	53
DWO 2360825	Axial Geared-Down 2:1 WELDON 25 Cool Thru	WELDON25	2:1	3000	X	X	X		106	66.5

\* Coolant Thru tools are designed for 1000 psi.  
They require 5 Micron Filtration and **CANNOT** be run dry.

#### AXIAL GEARED-UP 1:2 DRIVEN TOOL



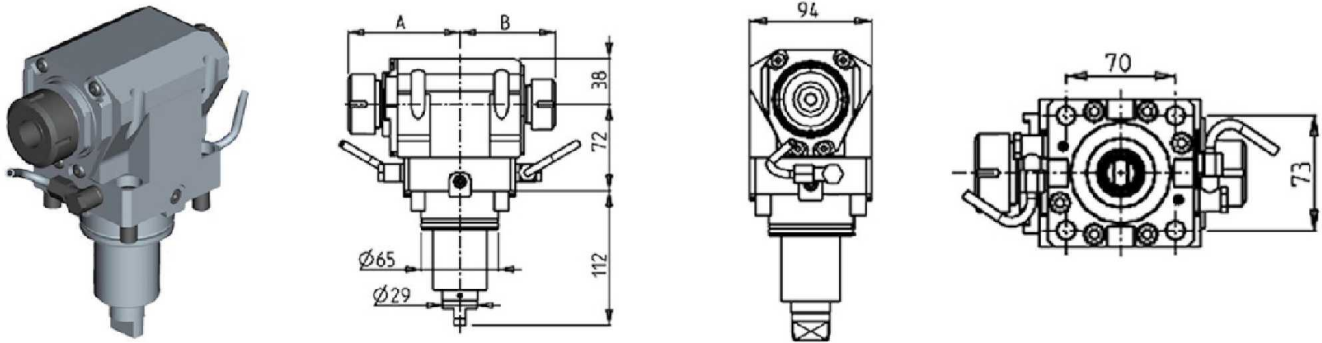
Part Number	Description	Reversible	Spindle	I	RPM	Cool Thru	Ext. Cool	B
DWO 0710125	Axial Geared-Up ERA25 1:2	X	ERA25	1:2	12000		X	64.7
DWO 0710225	Axial Geared-Up ERA25 1:2 Cool Thru*	X	ERA25	1:2	12000	X	X	73.2

\* Coolant Thru tools are designed for 1000 psi.  
They require 5 Micron Filtration and **CANNOT** be run dry.

## TC800 SMCY (BMT65)

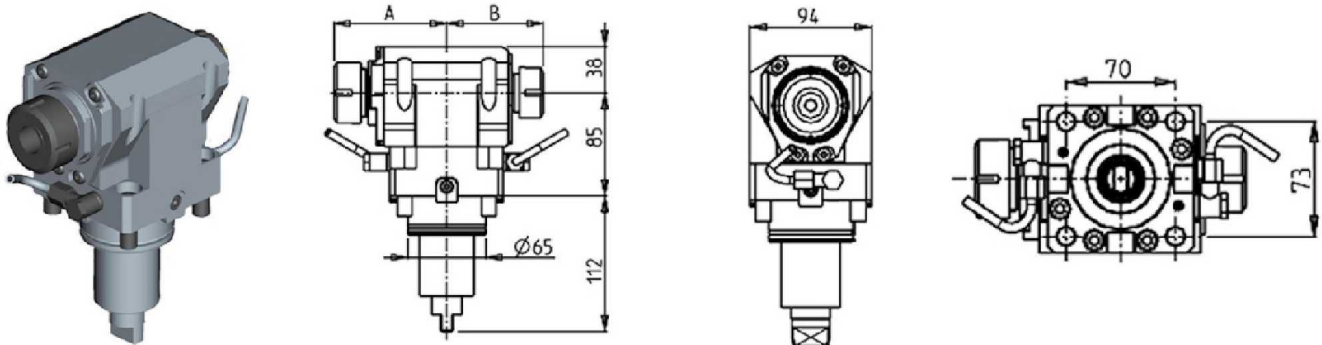
### DRIVEN

#### AXIAL OPPOSITE FACE DRIVEN TOOL H=72mm



Part Number	Description	Reversible	Spindle	I	RPM	Ext. Cool	A	B
DWO 0720132	Axial Opposite Face ER32+ER25 H=72mm	X	ER32+ER25	1:1	6000	X	93.66	80.16
DWO 0722520	Axial Opposite Face ERA25+ERA20 H=72mm	X	ERA25+ERA20	1:1	6000	X	65	55.5

#### AXIAL OPPOSITE FACE DRIVEN TOOL H=85mm

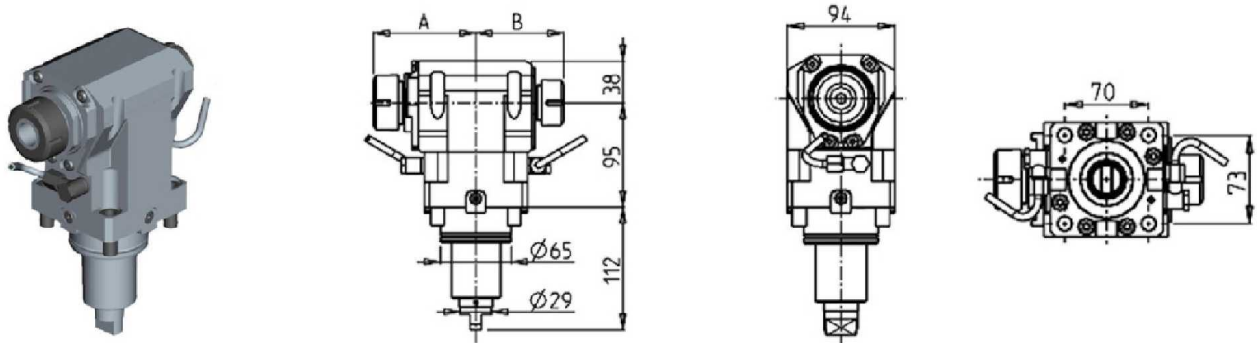


Part Number	Description	Spindle	I	Reversible	RPM	Ext. Cool	A	B
DWO 1150132	Axial Opposite Face ER32+ER25 H=85mm	ER32+ER25	1:1	X	6000	X	93.66	80.16
DWO 1152520	Axial Opposite Face ERA25+ERA20 H=85mm	ERA25+ERA20	1:1	X	6000	X	65	55.5

## TC800 SMCY (BMT65)

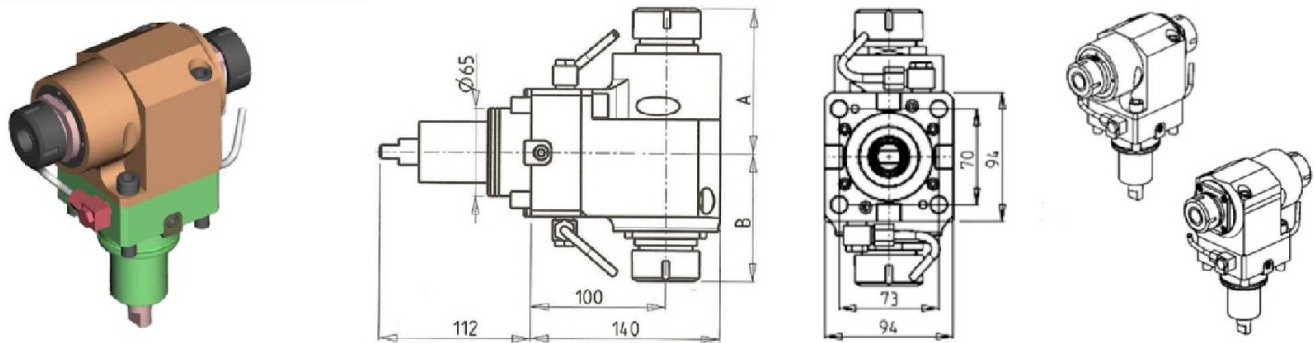
### DRIVEN

#### AXIAL OPPOSITE FACE DRIVEN TOOL H=95mm



Part Number	Description	Spindle	I	RPM	Reversible	Ext Cool	A	B
DWO 2520132	Axial Opposite Face ER32+ER25 H=95mm	ER32+ER25	1:1	6000	X	X	93.7	80.2
DWO 2522520	Axial Opposite Face ERA25+ERA20 H=95mm	ERA25+ERA20	1:1	6000	X	X	65	55.5

#### AXIAL OPPOSITE FACE DRIVEN TOOL H=100mm

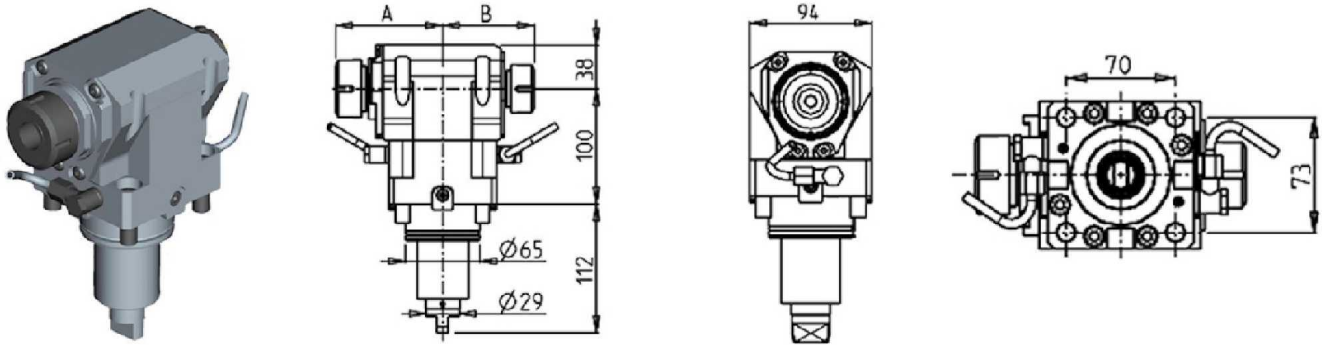


Part Number	Description	Reversible	Spindle	I	RPM	Ext. Cool	A	B
DWO 0070232	Axial Double Outlet ER32+ER32 H=100mm	X	ER32+ER32	1:1	6000	X	107.66	94.26
DWO 0073225	Axial Double Outlet ERA25+ERA32 H=100mm	X	ERA25+ERA32	1:1	6000	X	106.03	81.13

## TC800 SMCY (BMT65)

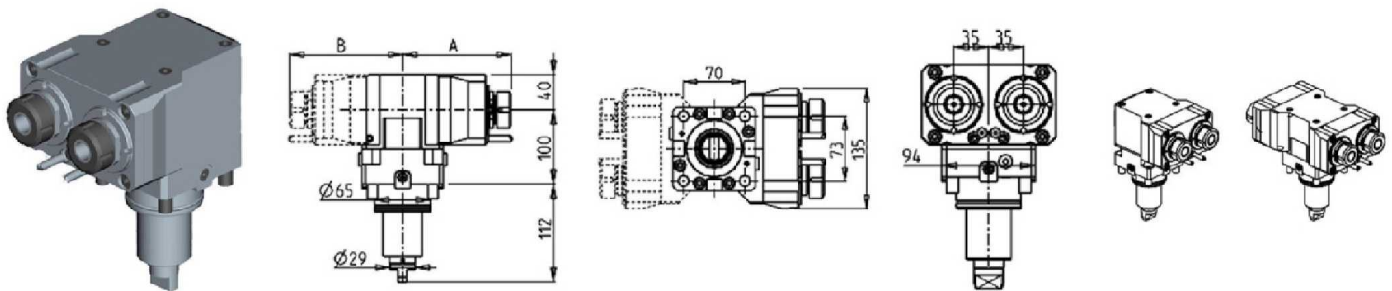
### DRIVEN

#### AXIAL OPPOSITE FACE DRIVEN TOOL H=100mm



Part Number	Description	Spindle	Reversible	I	RPM	Ext. Cool	A	B
DWO 1160132	Axial Opposite Face ER32+ER25 H=100mm	ER32+ER25	X	1:1	6000	X	93.66	80.16
DWO 1162520	Axial Opposite Face ERA25+ERA20 H=100mm	ERA25+ERA20	X	1:1	6000	X	65	55.5

#### AXIAL SINGLE SIDE TWIN HEAD DRIVEN TOOL IN Y H=100mm



Part Number	Description	Spindle	I	RPM	# of Tools	Reversible	Cool Thru	Ext Cool	A	B
DWO 1230225	Axial Single Side Twin ER25	ER25	1:1	6000	2	X		X	130.46	60
DWO 1231225	Axial Single Side Twin ER25 Cool Thru	ER25	1:1	6000	2	X	X	X	150.16	60
DWO 1231325	Axial Single Side Twin ERA25 Cool Thru	ERA25	1:1	6000	2	X	X	X	142	60
DWO 1232225	Axial Single Side Twin ER25+ER25	ER25+ER25	1:1	6000	2+2	X		X	130.46	125.46

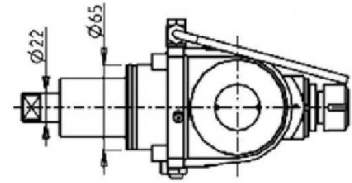
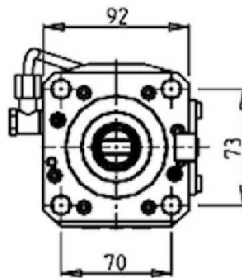
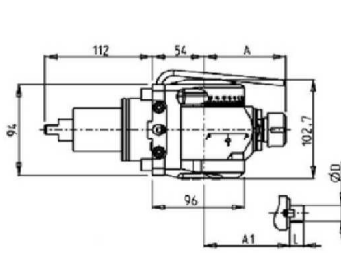
\* Coolant Thru tools are designed for 1000 psi.  
They require 5 Micron Filtration and **CANNOT** be run dry.



## TC800 SMCY (BMT65)

### DRIVEN

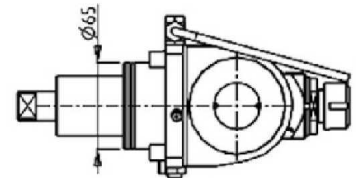
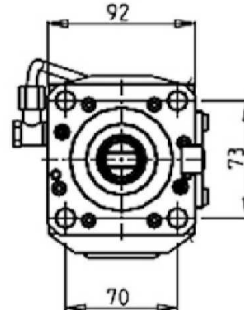
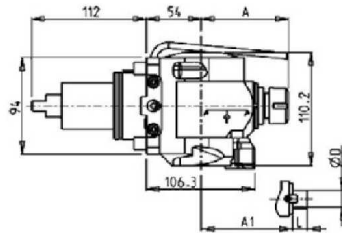
#### 0-180 ADJUSTABLE ANGLE DRIVEN TOOL H=54mm



Part Number	Description	Spindle	I	RPM	Reversible	Ext Cool	A	A1	D	L
DWO 1920120	0-180 Adjustable Angle ER20	ER20	1:1	6000	X	X	85.16			
DWO 1920125	0-180 Adjustable Angle ER25	ER25	1:1	6000	X	X	86.16			
DWO 1920519	0-180 Adjustable Angle 3/4"x3/4"	3/4"x3/4"	1:1	6000	X	X		65	3/4"	3/4"
DWO 1920516	0-180 Adjustable Angle 16x17mm	16x17mm	1:1	6000	X	X		65	16	17
DWO 1920522	0-180 Adjustable Angle 22x19mm	22x19mm	1:1	6000	X	X		66	22	19

**Note :** Wrenches are provided with the purchase of Specialty Toolholders

#### 0-180 ADJUSTABLE ANGLE DRIVEN TOOL WITH DIGITAL DISPLAY H=54mm



Part Number	Description	Spindle	I	RPM	Reversible	Ext Cool	A	A1	D	L
DWO 1850120	0-180 Adj. Angle ER20 with Digital Display	ER20	1:1	6000	X	X	85.16			
DWO 1850125	0-180 Adj. Angle ER25 with Digital Display	ER25	1:1	6000	X	X	86.16			
DWO 1850519	0-180 Adj. Angle 3/4"x3/4" with Digital Display	3/4"x3/4"	1:1	6000	X	X		65	3/4"	3/4"
DWO 1850516	0-180 Adj. Angle 16x17mm with Digital Display	16x17mm	1:1	6000	X	X		65	16	17
DWO 1850522	0-180 Adj. Angle 22x19mm with Digital Display	22x19mm	1:1	6000	X	X		66	22	19

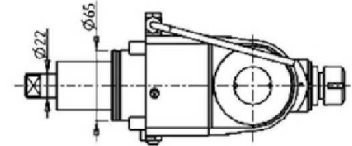
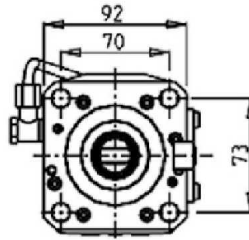
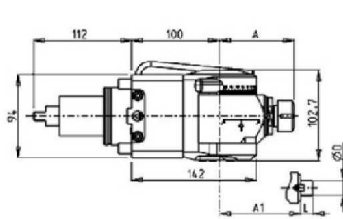
**Note :** Wrenches are provided with the purchase of Specialty Toolholders



## TC800 SMCY (BMT65)

### DRIVEN

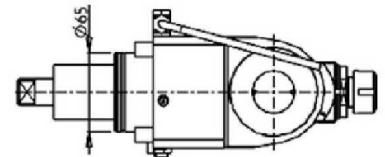
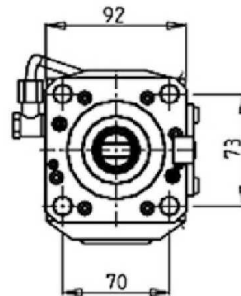
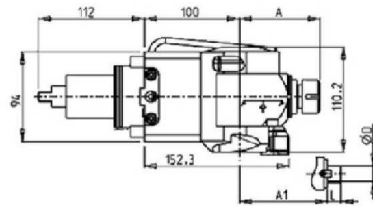
#### 0-180 ADJUSTABLE ANGLE DRIVEN TOOL H=100mm



Part Number	Description	Spindle	I	RPM	Reversible	Ext Cool	A	A1	D	L
DWO 1930120	0-180 Adjustable Angle ER20	ER20	1:1	6000	X	X	85.16			
DWO 1930125	0-180 Adjustable Angle ER25	ER25	1:1	6000	X	X	86.16			
DWO 1930519	0-180 Adjustable Angle 3/4"x3/4"	3/4"x3/4"	1:1	6000	X	X	65	3/4"	3/4"	
DWO 1930516	0-180 Adjustable Angle 16x17mm	16x17mm	1:1	6000	X	X	65	16	17	
DWO 1930522	0-180 Adjustable Angle 22x19mm	22x19mm	1:1	6000	X	X	66	22	19	

**Note :** Wrenches are provided with the purchase of Specialty Toolholders

#### 0-180 ADJUSTABLE ANGLE DRIVEN TOOL WITH DIGITAL DISPLAY H=100mm



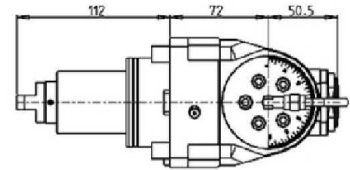
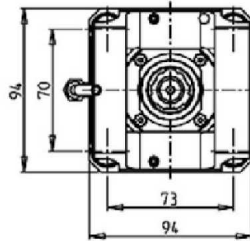
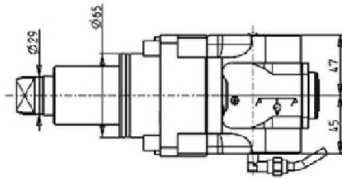
Part Number	Description	Spindle	I	RPM	Reversible	Ext Cool	A	A1	D	L
DWO 1860120	0-180 Adj. Angle ER20 with Digital Display	ER20	1:1	6000	X	X	85.16			
DWO 1860125	0-180 Adj. Angle ER25 with Digital Display	ER25	1:1	6000	X	X	86.16			
DWO 1860519	0-180 Adj. Angle 3/4"x3/4" with Digital Display	3/4"x3/4"	1:1	6000	X	X	65	3/4"	3/4"	
DWO 1860516	0-180 Adj. Angle 16x17mm with Digital Display	16x17mm	1:1	6000	X	X	65	16	17	
DWO 1860522	0-180 Adj. Angle 22x19mm with Digital Display	22x19mm	1:1	6000	X	X	66	22	19	

**Note :** Wrenches are provided with the purchase of Specialty Toolholders

## TC800 SMCY (BMT65)

### DRIVEN

#### 0-180 ADJUSTABLE ANGLE DRIVEN TOOL H=72mm



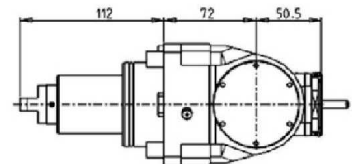
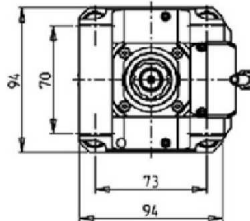
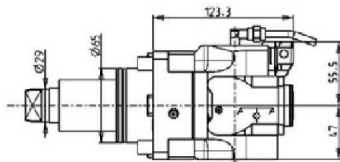
Part Number	Description	Spindle	I	RPM	Reversible	Cool Thru	Ext Cool
DWO 1940120	0-180 Adjustable Angle ERA20	ERA20	1:1	6000	X		X
DWO 1940220	0-180 Adjustable Angle ERA20 Cool Thru*	ERA20	1:1	6000	X	X	X

\* Coolant Thru tools are designed for 1000 psi.  
They require 5 Micron Filtration and **CANNOT** be run dry.

**Note :**

Wrenches are provided with the purchase of Specialty Toolholders

#### 0-180 ADJUSTABLE ANGLE DRIVEN TOOL WITH DIGITAL DISPLAY H=72mm



Part Number	Description	Spindle	I	RPM	Reversible	Cool Thru	Ext Cool
DWO 1945120	0-180 Adj. Angle ERA20 with Digital Display	ERA20	1:1	6000	X		X
DWO 1945220	0-180 Adj. Angle ERA20 with Digital Display Cool Thru*	ERA20	1:1	6000	X	X	X

\* Coolant Thru tools are designed for 1000 psi.  
They require 5 Micron Filtration and **CANNOT** be run dry.

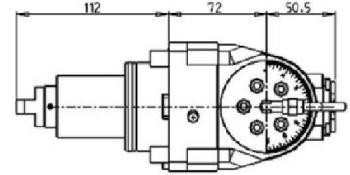
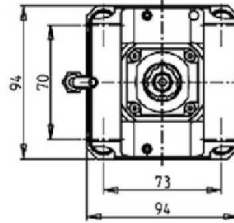
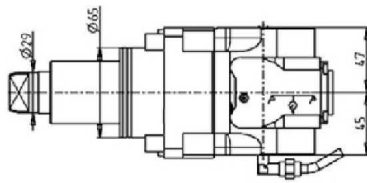
**Note :**

Wrenches are provided with the purchase of Specialty Toolholders

## TC800 SMCY (BMT65)

### DRIVEN

#### 0-180 ADJUSTABLE ANGLE DRIVEN TOOL GEARED-UP 1:2 H=72mm



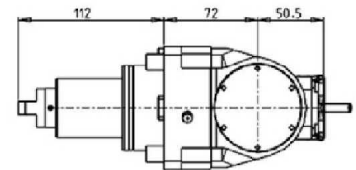
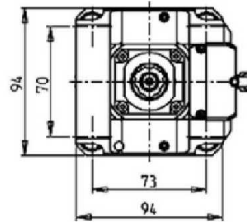
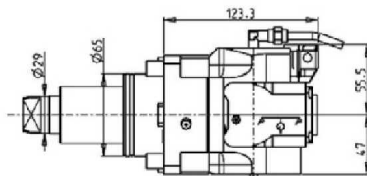
Part Number	Description	Spindle	I	RPM	Reversible	Cool Thru	Ext Cool
DWO 1940316	0-180 Adj. Angle Geared-Up ERA16	ERA16	1:2	12000	X		X
DWO 1940416	0-180 Adj. Angle Geared-Up ERA16 Cool Thru*	ERA16	1:2	12000	X	X	X

\* Coolant Thru tools are designed for 1000 psi.  
They require 5 Micron Filtration and **CANNOT** be run dry.

**Note :**

Wrenches are provided with the purchase of Specialty Toolholders

#### 0-180 ADJUSTABLE ANGLE DRIVEN TOOL GEARED-UP 1:2 WITH DIGITAL DISPLAY H=72mm



Part Number	Description	Spindle	I	RPM	Reversible	Cool Thru	Ext Cool
DWO 1945316	0-180 Adj. Angle Geared-Up ERA16 with Digital Display	ERA16	1:2	12000	X		X
DWO 1945416	0-180 Adj. Angle Geared-Up ERA16 with Digital Display Cool Thru*	ERA16	1:2	12000	X	X	X

\* Coolant Thru tools are designed for 1000 psi.  
They require 5 Micron Filtration and **CANNOT** be run dry.

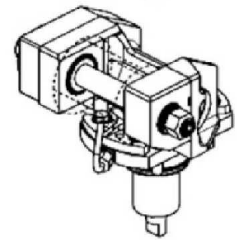
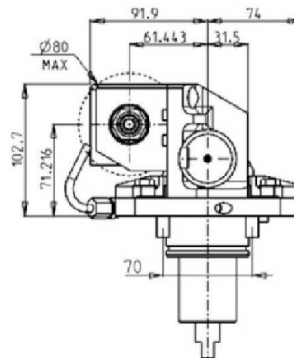
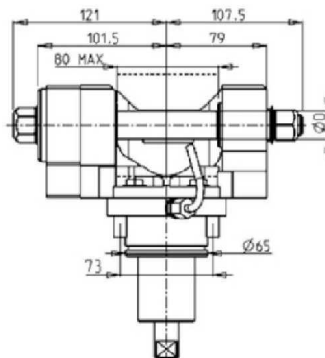
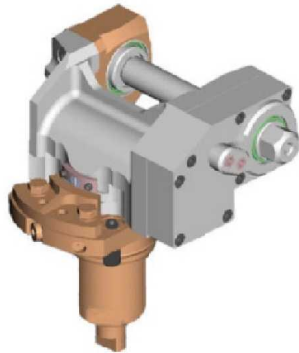
**Note :**

Wrenches are provided with the purchase of Specialty Toolholders

## TC800 SMCY (BMT65)

### DRIVEN

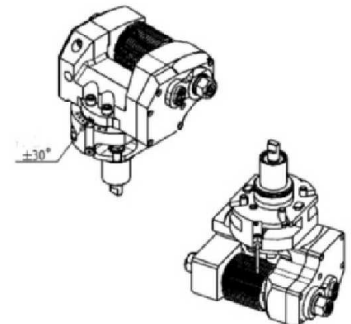
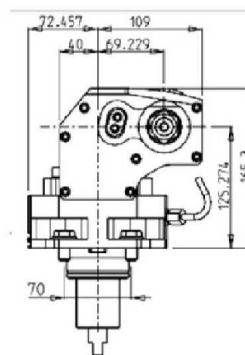
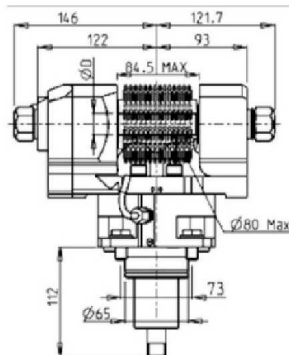
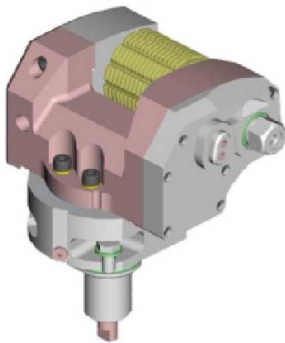
#### DRIVEN GEAR HOBBER



Part Number	Description	Reversible	I	RPM	Ext. Cool	D mm	D Inch
0321100	Gear Hobbing Tool 1:1	X	1:1	6000	X	16-22-27-32	3/4"-1"-1 1/4"
0322100	Gear Hobbing Tool 2:1 Geared Down	X	2:1	3000	X	16-22-27-32	3/4"-1"-1 1/4"

**Note :** Wrenches are provided with the purchase of Specialty Toolholders

#### GEAR HOBBER - REINFORCED



Part Number	Description	Reversible	I	RPM	Ext. Cool	D mm	D Inch
DWO 0031100	Heavy Duty Gear Hobbing Tool 1:1	X	1:1	6000	X	16-22-27-32	3/4"-1"-1 1/4"
DWO 0032100	Heavy Duty Gear Hobbing Tool 2:1 Geared Down	X	2:1	3000	X	16-22-27-32	3/4"-1"-1 1/4"

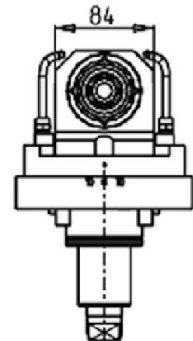
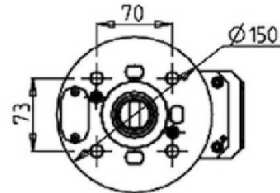
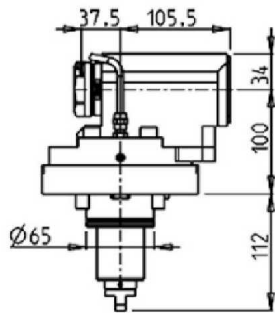
**Note :** Wrenches are provided with the purchase of Specialty Toolholders

## TC800 SMCY (BMT65)

### DRIVEN

#### QUICK CHANGE AXIAL MTSK-40 DRIVEN TOOL FOR POWER SKIVING H=100mm

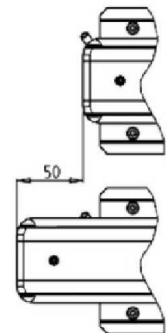
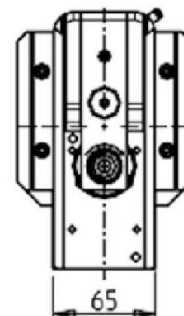
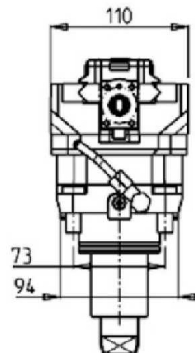
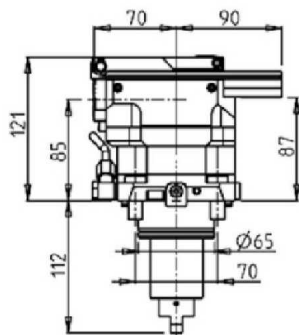
See Accessories for MTSK Quick Change Tool Holder Clamps



Part Number	Description	Spindle	I	RPM	Reversible	Ext Cool
DWO 1770100	Axial MTSK-40 for Power Skiving	MTSK-40	1:1	6000	X	X

**Note :** Wrenches are provided with the purchase of Specialty Toolholders

#### BROACHING/SLOTING TOOL 50mm STROKE H=85mm

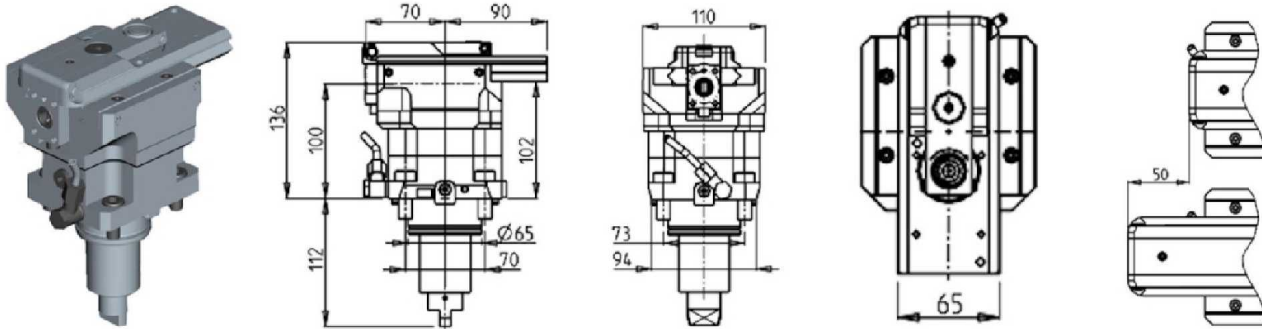


Part Number	Description	I	RPM MAX	Reversible	Ext Cool
DWO 1530100	Broaching / Slotting Tool H=85mm	4:1	2000	X	X

## TC800 SMCY (BMT65)

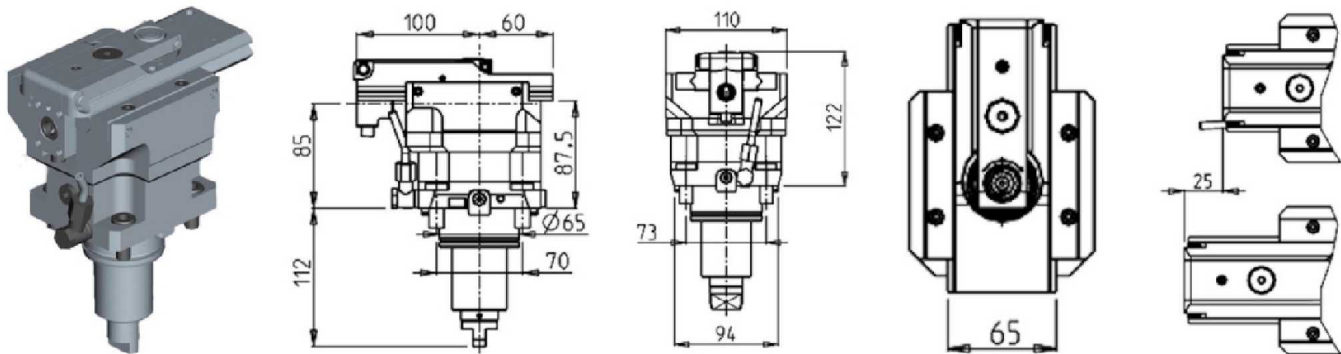
### DRIVEN

#### BROACHING/SLOTING TOOL 50mm STROKE H=100mm



Part Number	Description	I	RPM MAX	Reversible	Ext Cool
DWO 1520100	Broaching / Slotting Tool H=100mm	4:1	2000	X	X

#### BROACHING/SLOTING TOOL 25mm STROKE H=85mm



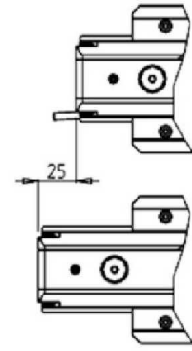
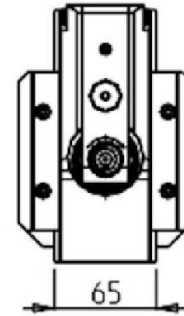
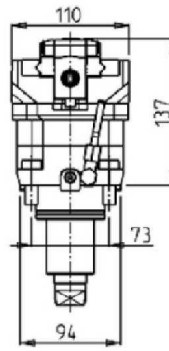
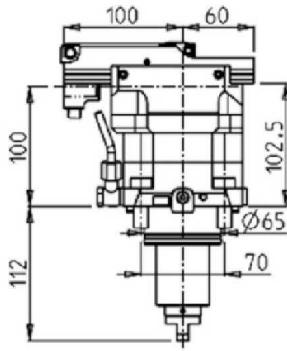
Part Number	Description	I	RPM MAX	Reversible	Ext Cool
DWO 1530200	Broaching / Slotting Tool H=85mm	4:1	2400	X	X



## TC800 SMCY (BMT65)

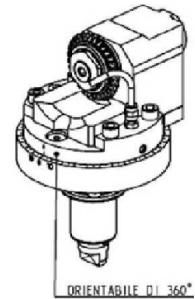
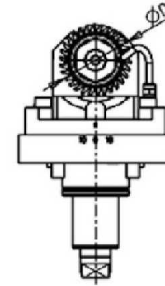
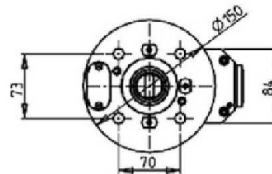
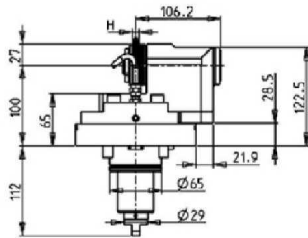
### DRIVEN

#### BROACHING/SLOTING TOOL 25mm STROKE H=100mm



Part Number	Description	I	RPM MAX	Reversible	Ext Cool
DWO 1520200	Broaching / Slotting Tool H=100mm	4:1	2400	X	X

#### WORM GEAR DRIVEN TOOL



Part Number	Description	Spindle	I	RPM	Reversible	Ext Cool	Ø D	H
DWO 2928125	Driven Worm Gear Tool 1"x12mm	Ø1"x12	1:1	6000	X	X	63-70-80	MAX 12
DWO 2928022	Driven Worm Gear Tool 22mmx12mm	Ø22x12	1:1	6000	X	X	63-70-80	MAX 12

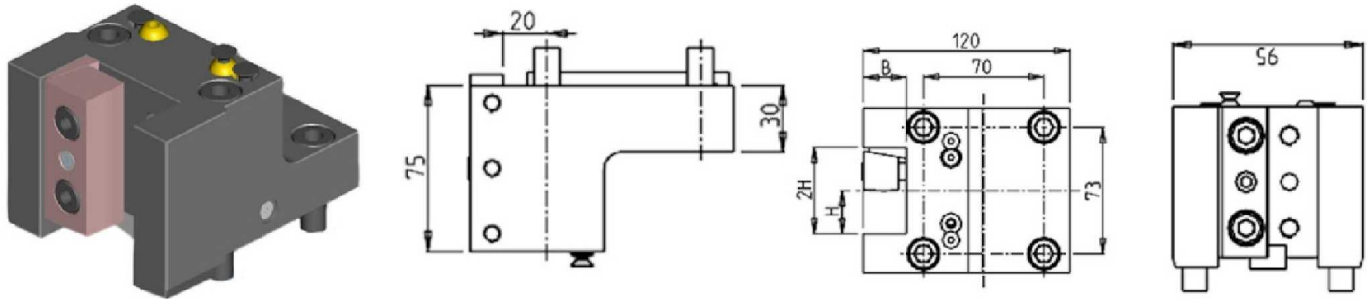
**Note :** Wrenches are provided with the purchase of Specialty Toolholders



## TC800 SMCY (BMT65)

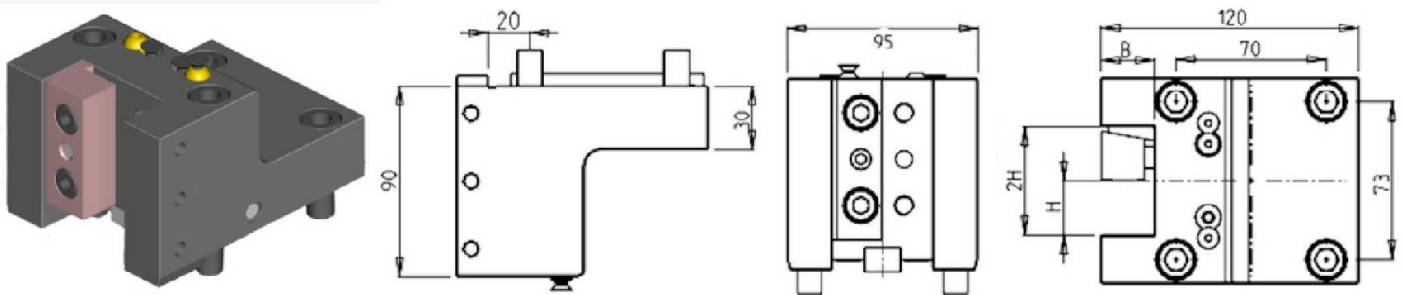
### STATIC

#### RADIAL STATIC HOLDER H=75mm



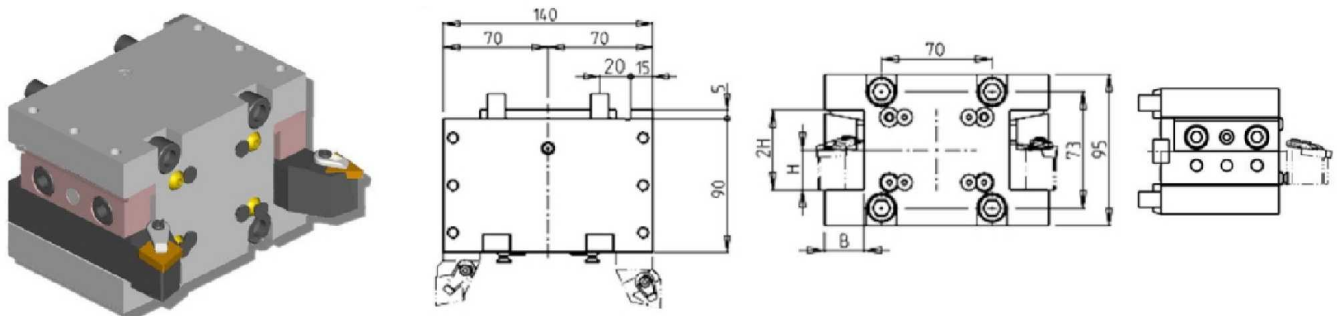
Part Number	Description	# of Tools	Reversible	Dimensions	B	H
DWO 1422540	Radial Static Tool: 1" H=75mm	1	X	Inch	1"	1"
DWO 1422500	Radial Static Tool: 25mm H=75mm	1	X	mm	25	25

#### RADIAL STATIC HOLDER H=90mm



Part Number	Description	# of Tools	Reversible	Dimensions	B	H
DWO 0482540	Radial Static Tool: 1" H=90mm	1	X	Inch	1"	1"
DWO 0482000	Radial Static Tool: 20mm H=90mm	1	X	mm	20	20
DWO 0482500	Radial Static Tool: 25mm H=90mm	1	X	mm	25	25

#### RADIAL DOUBLE STATIC HOLDER

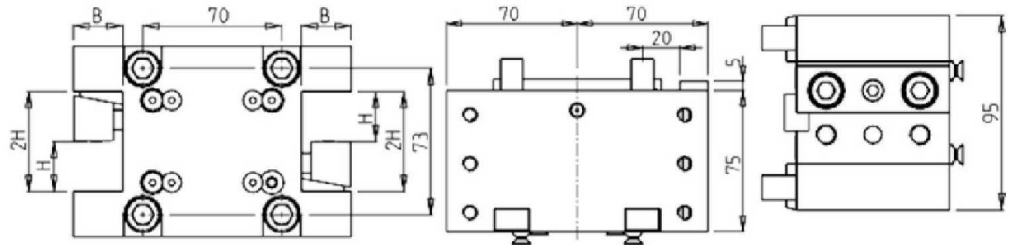
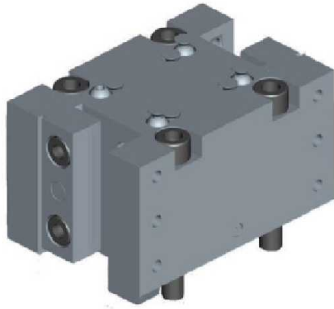


Part Number	Description	# of Tools	Reversible	Dimensions	B	H
DWO 0272540	Radial Double Static Tool : 1"	2/4	X	Inch	1"	1"
DWO 0272000	Radial Double Static Tool : 20mm	2/4	X	mm	20	20
DWO 0272500	Radial Double Static Tool : 25mm	2/4	X	mm	25	25

## TC800 SMCY (BMT65)

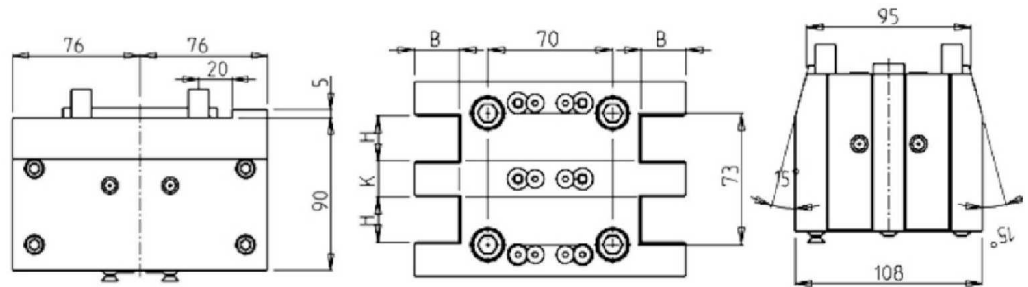
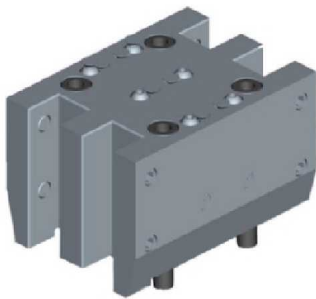
### STATIC

#### RADIAL DOUBLE STATIC HOLDER H=75mm



Part Number	Description	# of Tools	Reversible	Dimensions	B	H
DWO 0672000	Radial Double Static Tool 20mm H=75mm	2/4	X	mm	20	20
DWO 0672500	Radial Double Static Tool 25mm H=75mm	2/4	X	mm	25	25

#### RADIAL DOUBLE SIDE TWIN STATIC TOOL

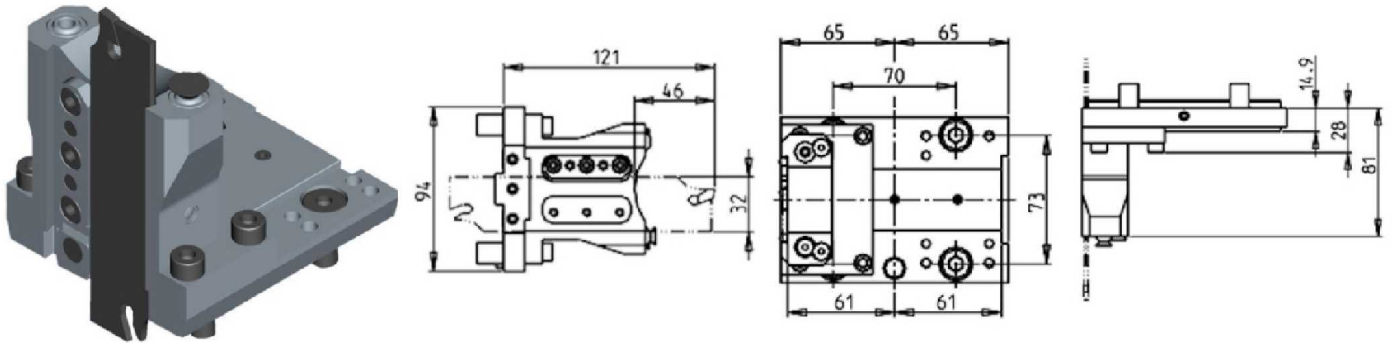


Part Number	Description	# of Tools	Reversible	Dimensions	H	K	B
DWO 0622540	Radial Double Side Twin Static Tool H=1"	4	X	Inch	1"	3/4"	1"
DWO 0622500	Radial Double Side Twin Static Tool H=25mm	4	X	mm	25	20	25

## TC800 SMCY (BMT65)

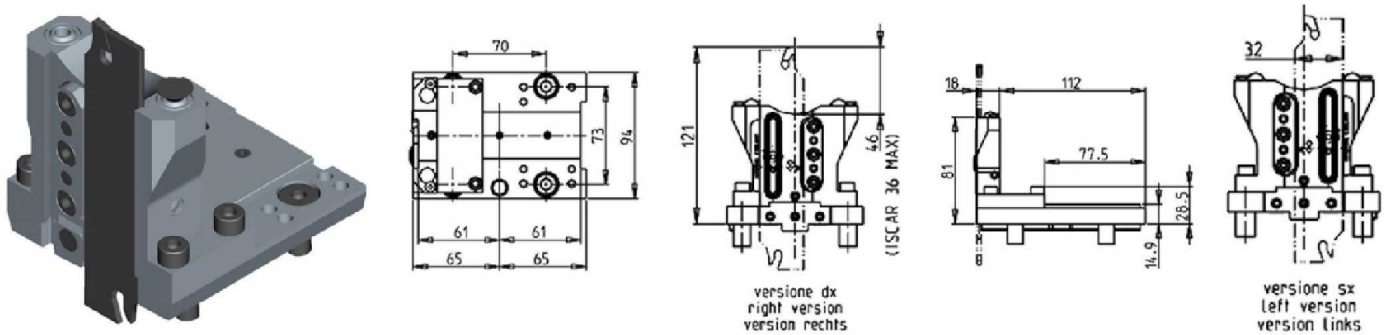
### STATIC

#### RADIAL BLADE HOLDER WITH BLADE KIT



Part Number	Description	# of Tools	Reversible	Ext Cool
DWO 1410132	Radial Blade Holder with Blade Kit	1	X	X
BLADEKIT	Blade Kit: 1 Blade, 10 Inserts			

#### RADIAL BLADE HOLDER WITH INTERNAL COOLANT-BLADE KIT NOT INCLUDED

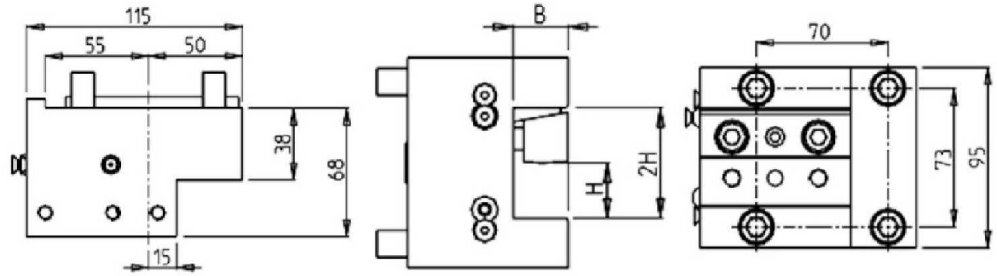
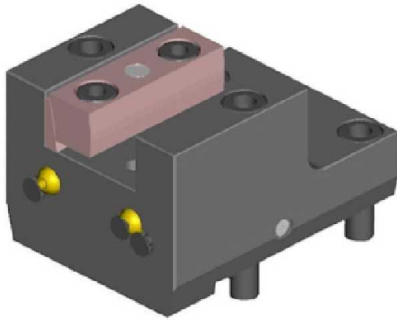


Part Number	Description	# of Tools	Reversible	Ext Cool	Cool Thru
DWO 1730132R	Radial Blade Holder with Cool Thru (Right Hand)	1	X	X	X
DWO 1730132L	Radial Blade Holder with Cool Thru (Left Hand)	1	X	X	X
COOL THRU BLADEKIT	Blade Kit: 1 Blade, 10 Inserts				

## TC800 SMCY (BMT65)

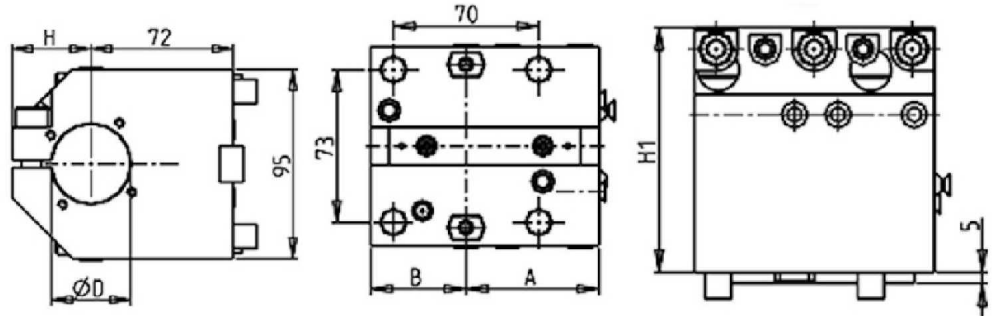
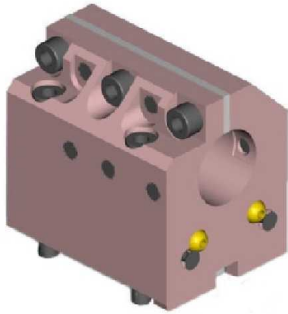
### STATIC

#### AXIAL STATIC TOOL



Part Number	Description	# of Tools	Reversible	Dimensions	B	H
DWO 1452540	Axial Static Tool 1"	1	X	Inch	1"	1"
DWO 1452500	Axial Static Tool 25mm	1	X	mm	25	25

#### AXIAL SINGLE BORING BAR HOLDER

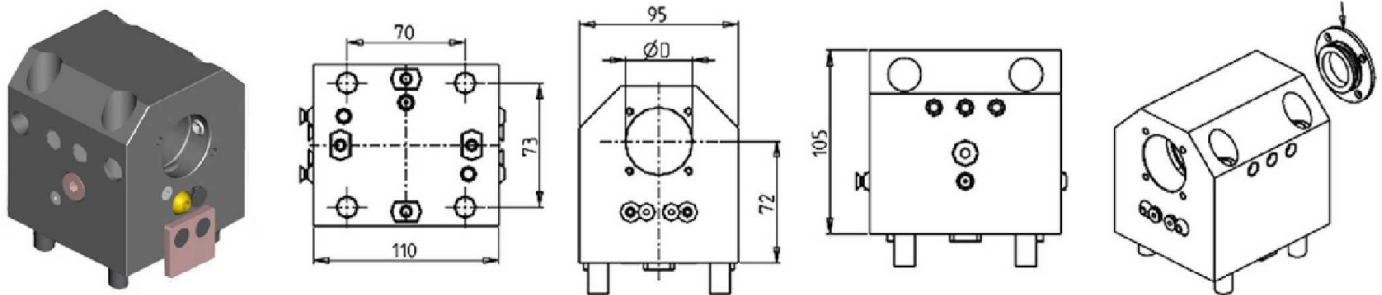


Part Number	Description	# of Tools	Reversible	Cool Thru	Ext. Cool	Dimensions	D	A	B	H	H1
0833810	Axial Single BBH: 1-1/2"	1	X	X	X	Inch	1 1/2"	64	46	40	112
0835080	Axial Single BBH: 2"	1	X	X	X	Inch	2"	64	46	46.5	118
0832500	Axial Single BBH: 25mm	1	X	X	X	mm	25	55	55	33	105
0834000	Axial Single BBH: 40mm	1	X	X	X	mm	40	64	46	40	112
0835000	Axial Single BBH: 50mm	1	X	X	X	mm	50	64	46	46.5	118
KIT 1003004	Plug & Seal Kit for 1 1/2" BBH to Make IC										
KIT 1003006	Plug & Seal Kit for 25mm BBH to Make IC										
KIT 1003003	Plug & Seal Kit for 40mm BBH to Make IC										
KIT 1003002	Plug & Seal Kit for 50mm or 2" BBH to Make IC										

## TC800 SMCY (BMT65)

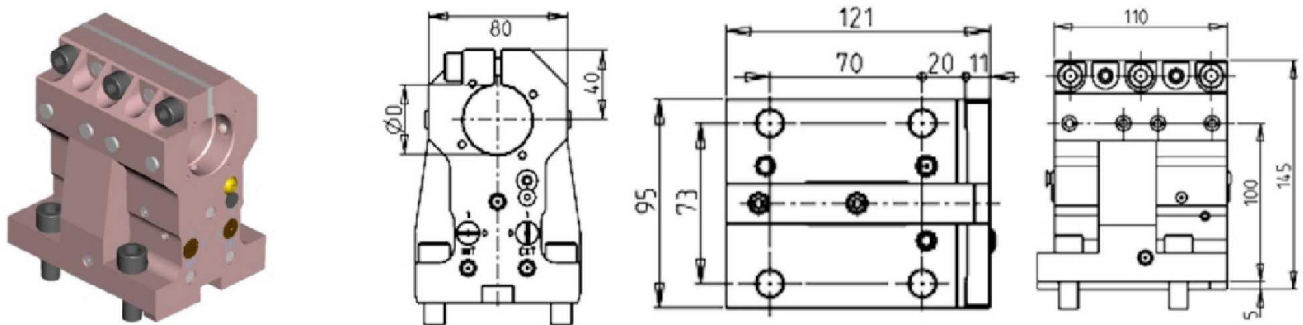
### STATIC

#### AXIAL SINGLE BORING BAR HOLDER H=72mm



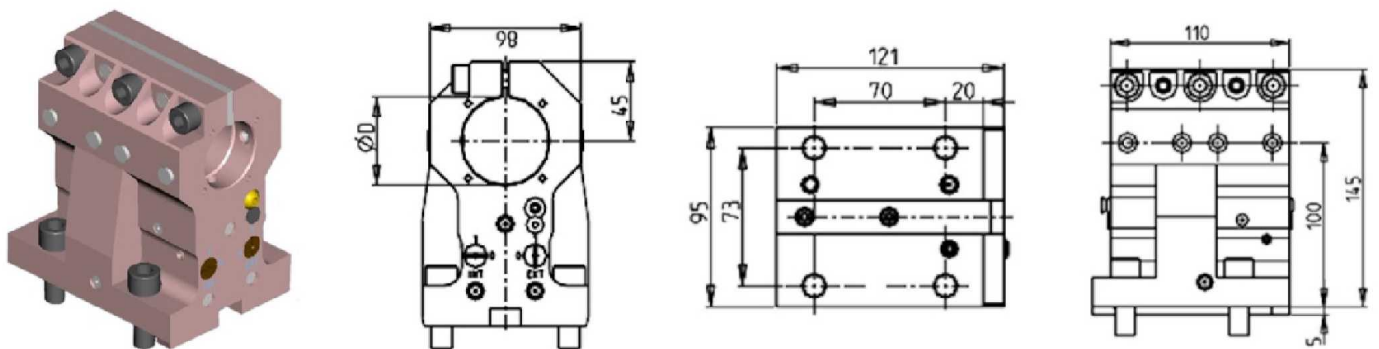
Part Number	Description	# of Tools	Reversible	Cool Thru	Ext Cool	Dimensions	D
DWO 2882500	Axial Single BBH 25mm	1	X	X	X	mm	25
DWO 2884000	Axial Single BBH 40mm	1	X	X	X	mm	40
KIT 1000006	Plug for 25mm BBH to Make Cool Thru						
KIT 1000003	Plug for 40mm BBH to Make Cool Thru						

#### AXIAL SINGLE BORING BAR HOLDER 40mm H=100mm



Part Number	Description	# of Tools	Reversible	Cool Thru	Ext. Cool	Dimensions	B
DWO 0204000	Axial Single BBH: 40mm, H=100mm	1	X	X	X	mm	40
KIT 1003003	Plug & Seal Kit for 40mm BBH to Make Cool Thru						

#### AXIAL SINGLE BORING BAR HOLDER 50mm H=100mm

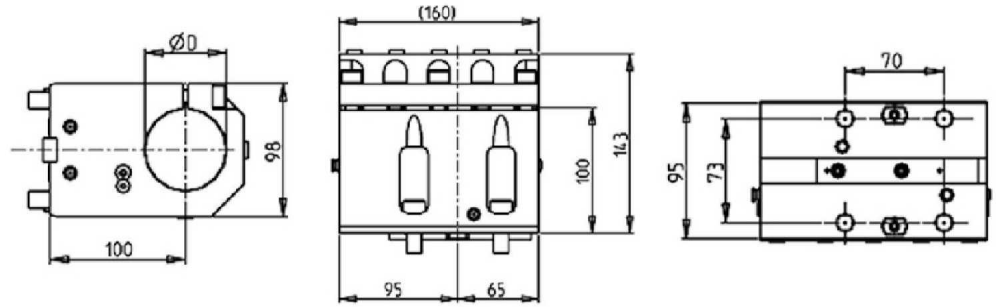
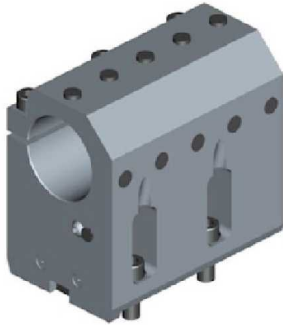


Part Number	Description	# of Tools	Reversible	Cool Thru	Ext Cool	Dimensions	D
DWO 0205000	Axial Single BBH: 50mm, H=100mm	1	X	X	X	mm	50
KIT 1003002	Plug & Seal Kit for 50mm or 2" BBH to Make Cool Thru						

## TC800 SMCY (BMT65)

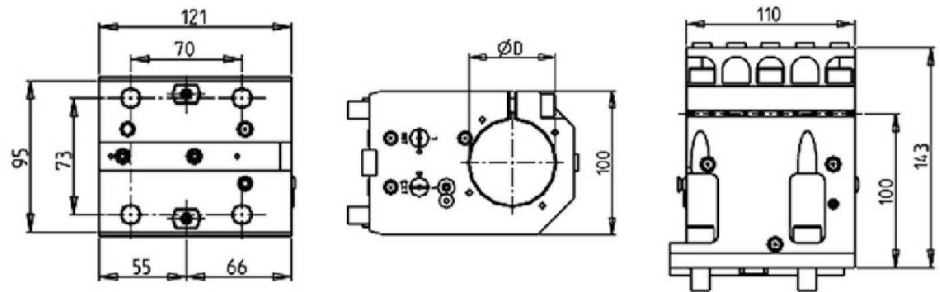
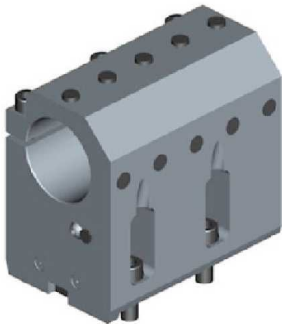
### STATIC

#### AXIAL SINGLE BORING BAR HOLDER 60mm H=100mm



Part Number	Description	# of Tools	Reversible	Ext Cool	Dimension	D
DWO 1446000	Axial Single BBH 60mm H=100mm	1	X	X	mm	60

#### AXIAL SINGLE BORING BAR HOLDER 60mm H=100mm



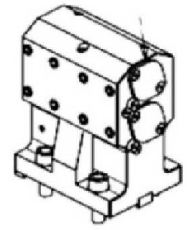
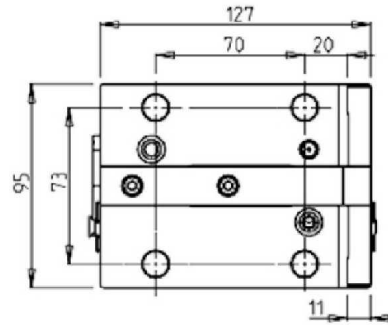
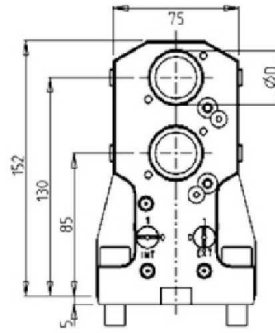
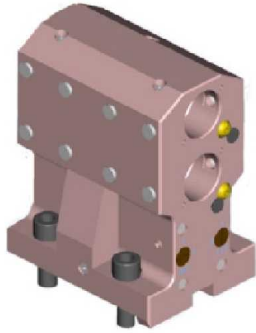
Part Number	Description	# of Tools	Reversible	Cool Thru	Dimensions	D
DWO 0746000	Axial Single BBH: 60mm	1	X	X	mm	60
KIT 1003025	Plug & Seal Kit for 60mm BBH to Make Cool Thru					



## TC800 SMCY (BMT65)

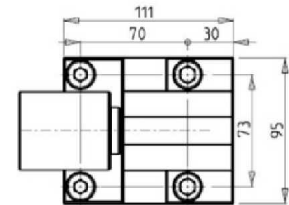
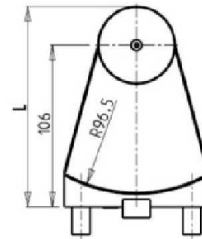
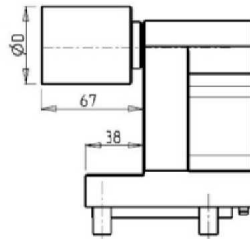
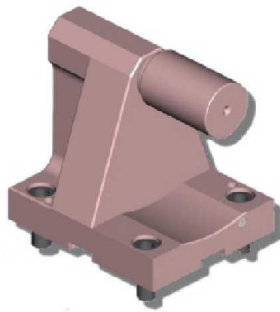
### STATIC

#### DOUBLE AXIAL 2+2 BORING BAR HOLDER



Part Number	Description	# of Tools	Reversible	Cool Thru	Ext. Cool	Dimensions	B
DWO 0213175	Axial Double BBH: 1 1/4"	2+2	X	X	X	Inch	1 1/4"
DWO 0213200	Axial Double BBH: 32mm	2+2	X	X	X	mm	32
KIT 1000001	Plug for 32mm or 1 1/4" BBH to Make Cool Thru						

#### TAILSTOCK FOR SUBSPINDLE

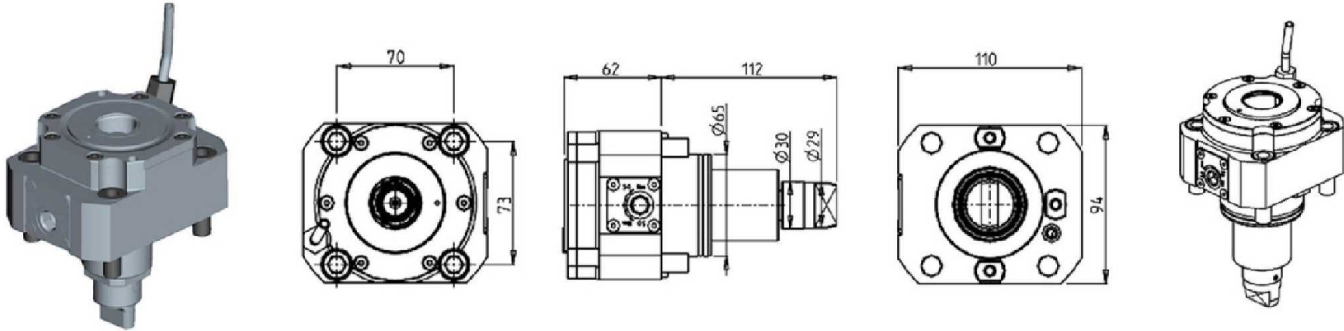


Part Number	Description	# of Tools	D	L
0820200	Tailstock for Sub Spindle 38mm	1	38	125
0820200L	Tailstock for Sub Spindle 2"	1	2"	131.4
080003	Removable Tailstock Center			

## TC800 SMCY (BMT65)

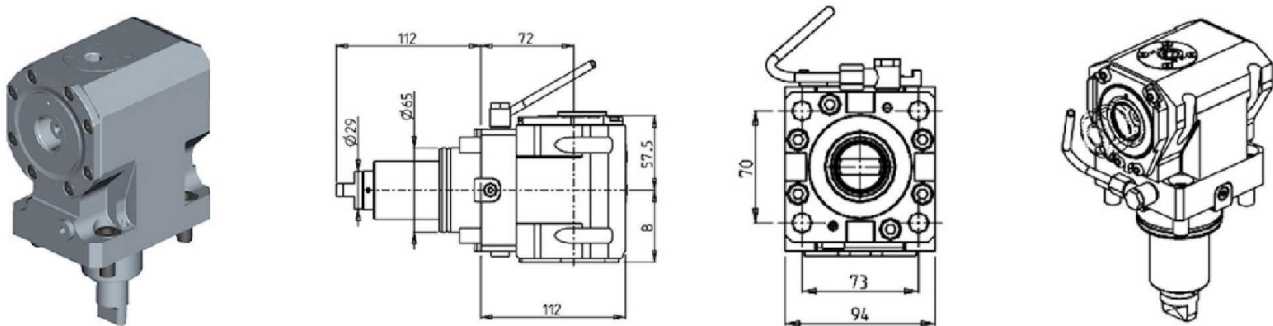
### DRIVEN

#### RADIAL DRIVEN TOOL CAPTO C4



Part Number	Description	Size	I	RPM	Ext Cool
DWO 3150140	Radial Driven Tool Capto C4	C4	1:1	6000	X

#### AXIAL DRIVEN TOOL CAPTO C4 H=72mm



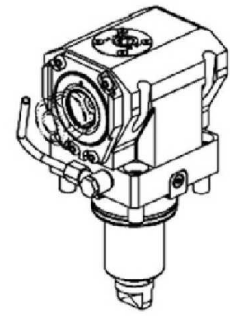
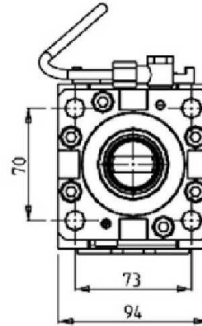
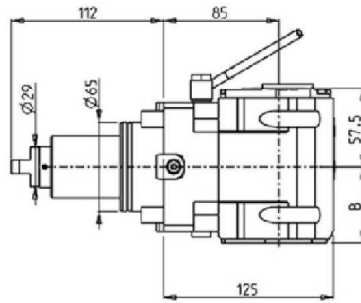
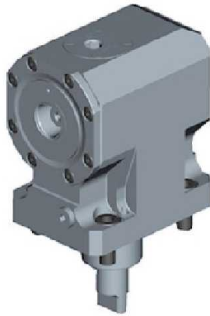
Part Number	Description	Size	I	RPM	Reversible	Cool Thru	Ext Cool	B
DWO 3080140	Axial Driven Tool Capto C4	C4	1:1	6000	X		X	55.5
DWO 3080240	Axial Driven Tool Capto C4 Cool Thru*	C4	1:1	6000	X	X	X	66.5

\* Coolant Thru tools are designed for 1000 psi.  
They require 5 Micron Filtration and **CANNOT** be run dry.

## TC800 SMCY (BMT65)

### DRIVEN

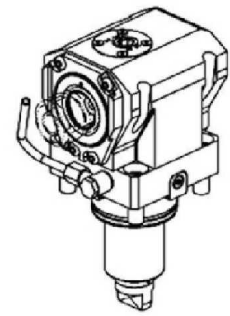
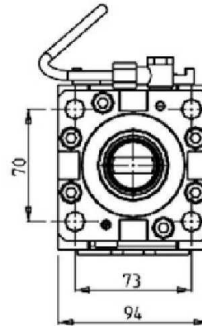
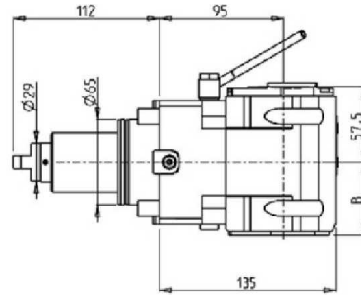
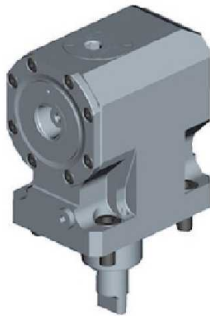
#### AXIAL DRIVEN TOOL CAPTO C4 H=85mm



Part Number	Description	Size	I	RPM	Reversible	Cool Thru	Ext Cool	B
DWO 3110140	Axial Driven Tool Capto C4	C4	1:1	6000	X		X	55.5
DWO 3110240	Axial Driven Tool Capto C4 Cool Thru*	C4	1:1	6000	X	X	X	66.5

\* Coolant Thru tools are designed for 1000 psi.  
They require 5 Micron Filtration and **CANNOT** be run dry.

#### AXIAL DRIVEN TOOL CAPTO C4 H=95mm



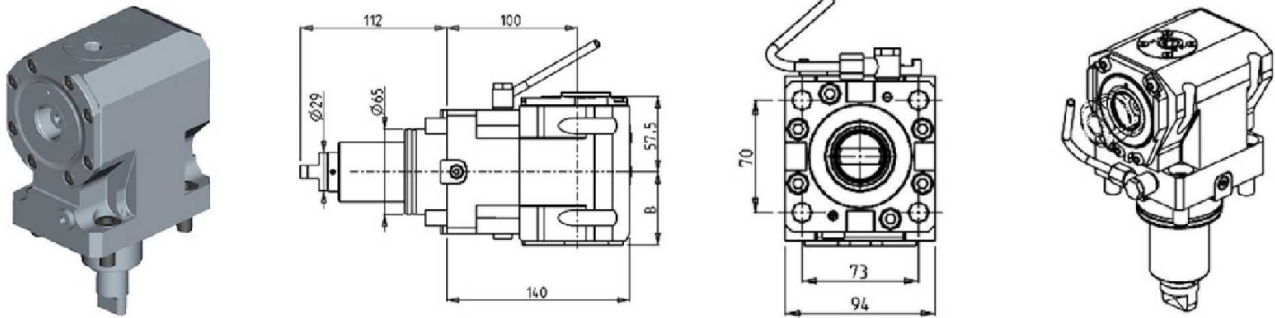
Part Number	Description	Size	I	RPM	Reversible	Cool Thru	Ext Cool	B
DWO 3120140	Axial Driven Tool Capto C4	C4	1:1	6000	X		X	55.5
DWO 3120240	Axial Driven Tool Capto C4 Cool Thru*	C4	1:1	6000	X	X	X	66.5

\* Coolant Thru tools are designed for 1000 psi.  
They require 5 Micron Filtration and **CANNOT** be run dry.

## TC800 SMCY (BMT65)

### DRIVEN

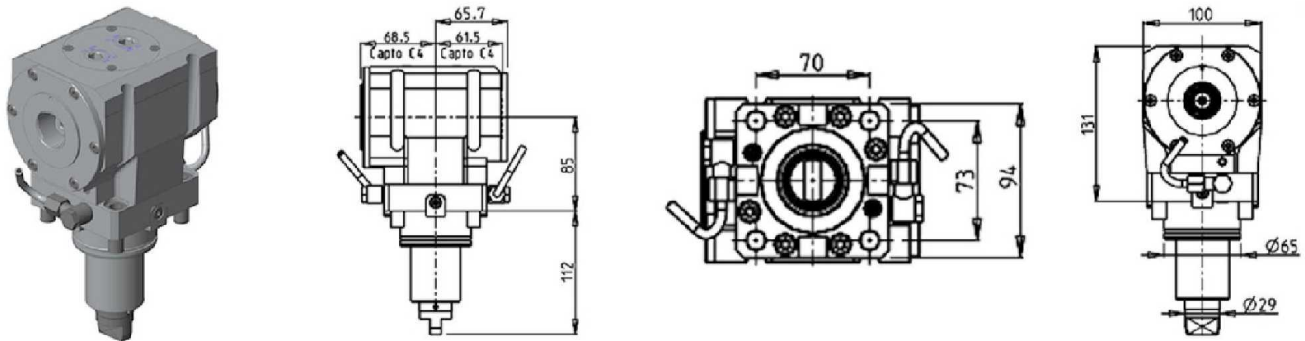
#### AXIAL DRIVEN TOOL CAPTO C4 H=100mm



Part Number	Description	Size	I	RPM	Reversible	Cool Thru	Ext Cool	B
DWO 3130140	Axial Driven Tool Capto C4	C4	1:1	6000	X		X	55.5
DWO 3130240	Axial Driven Tool Capto C4 Cool Thru*	C4	1:1	6000	X	X	X	66.5

\* Coolant Thru tools are designed for 1000 psi.  
They require 5 Micron Filtration and **CANNOT** be run dry.

#### AXIAL OPPOSITE FACE TWIN DRIVEN TOOL CAPTO C4 H=85mm

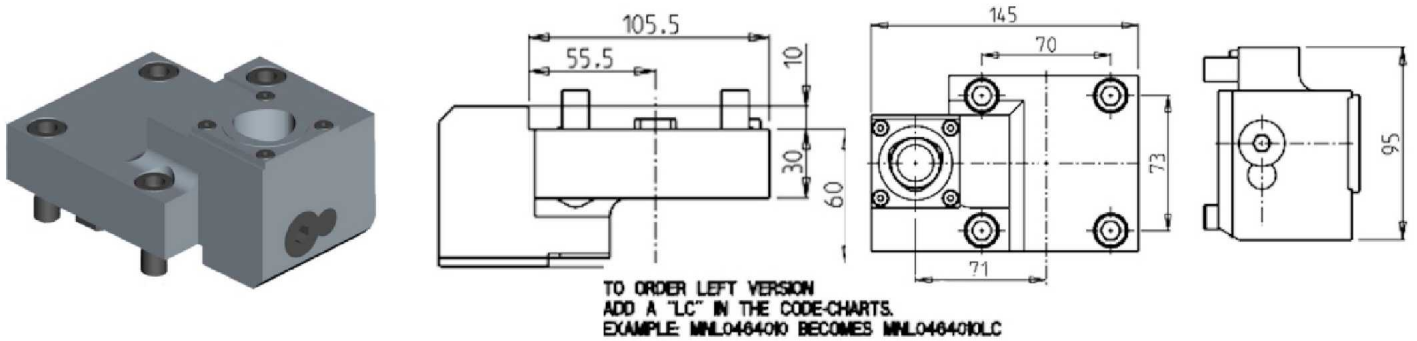


Part Number	Description	Size	I	RPM	Reversible	Ext Cool
DWO 3140240	Axial Opposite Face Twin Capto C4+C4	C4+C4	1:1	6000	X	X

## TC800 SMCY (BMT65)

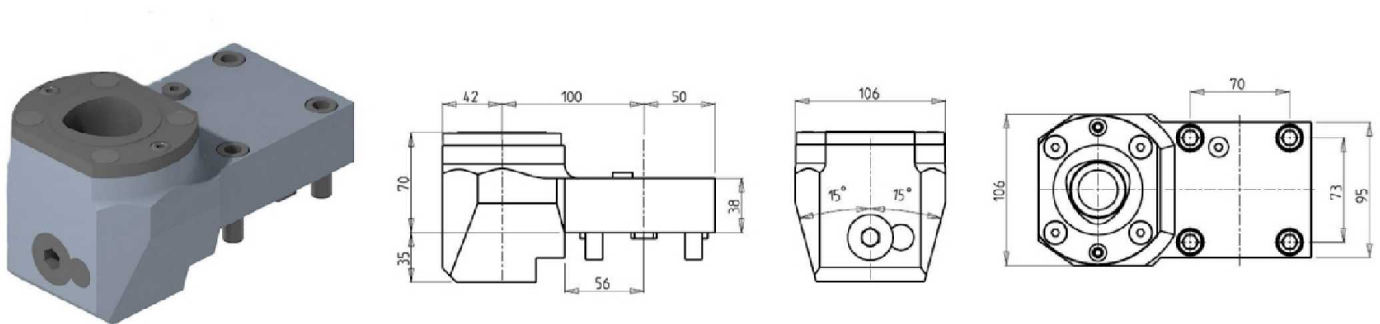
### STATIC

#### RADIAL SINGLE REAR-SET STATIC TOOL CAPTO C4



Part Number	Description	# of Tools	Reversible	Size	Cool Thru
DWO 1384010	Rear-Set Radial Static Capto C4 Right Hand	1	X	C4	X
DWO 1384010LC	Rear-Set Radial Static Capto C4 Left Hand	1	X	C4	X

#### RADIAL SINGLE REAR-SET STATIC TOOL CAPTO C6

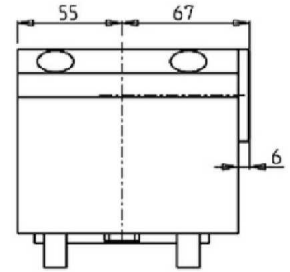
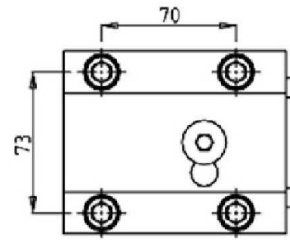
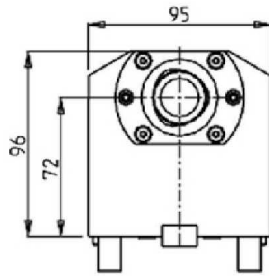


Part Number	Description	# of Tools	Cool Thru	Ext Cool	Reversible	Size
DWO 3176010	Radial Single Rear-Set Static Tool Capto C6 Right Hand	1	X	X	X	C6
DWO 3176010LC	Radial Single Rear-Set Static Tool Capto C6 Left Hand	1	X	X	X	C6

## TC800 SMCY (BMT65)

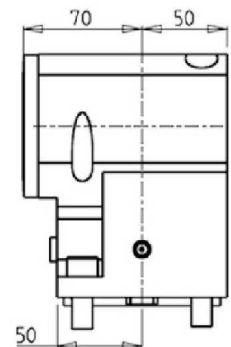
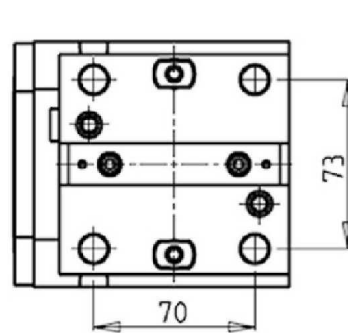
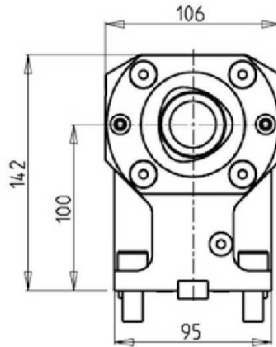
### STATIC

#### AXIAL SINGLE STATIC TOOL CAPTO C4



Part Number	Description	# of Tools	Cool Thru	Reversible	Size
DWO 2644010	Axial Single Static Tool Capto C4 Right Hand	1	X	X	C4
DWO 2644010LC	Axial Single Static Tool Capto C4 Left Hand	1	X	X	C4

#### AXIAL SINGLE STATIC TOOL CAPTO C6



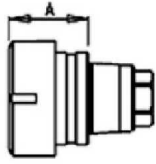
Part Number	Description	# of Tools	Cool Thru	Ext Cool	Reversible	Size
DWO 3166010	Axial Single Static Tool Capto C6 Right Hand	1	X	X	X	C6
DWO 3166010LC	Axial Single Static Tool Capto C6 Left Hand	1	X	X	X	C6



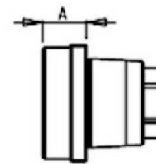
## ACCESSORIES

### DRIVEN

#### MTSK-32 ER ADAPTORS



Cod. MT	Mandrino Spindle	A
MTSK32A03	ER25	31.7



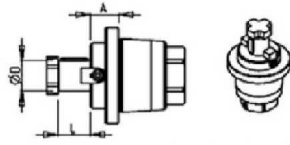
Cod. MT	Mandrino Spindle	A
MTSK32B03	ERA20	19
MTSK32B04	ERA16	13

Part Number	Description	Spindle	A
MTSK32B04	MTSK-32 Adaptor ERA16	ERA16	13
MTSK32B03	MTSK-32 Adaptor ERA20	ERA20	19
MTSK32A03	MTSK-32 Adaptor ER25	ER25	31.7

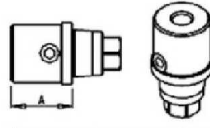
## ACCESSORIES

### DRIVEN

#### MTSK-32 MILL ADAPTORS



Cod. MT	Mandriño Spindle	Misure Dimensions	A	D	L
MTSK32C02	Ø16x17	mm	14	16	17



Cod. MT	Mandriño Spindle	A
MTSK32D03	WELDON 10	32

Cod. MT	Tappo di protezione
MTSK32T00	Cover Plug
	Abdeckstopfen

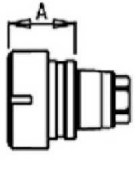


Part Number	Description	Spindle	Dimensions	A	D	L
MTSK32C02	MTSK-32 Adaptor Mill 16x17	16x17	mm	14	16	17
MTSK32D03	MTSK-32 Adaptor Weldon 10	Weldon 10		32		
MTSK32T00	MTSK-32 Cover Plug					

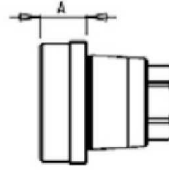
## ACCESSORIES

### DRIVEN

#### MTSK-40 ER ADAPTORS



Cod. MT	Mandrino Spindel	A
MTSK40A02	ER32	35.6
MTSK40A03	ER25	32.6
MTSK40A05	ER16	30.26



Cod. MT	Mandrino Spindel	A
MTSK40B02	ERA25	16
MTSK40B03	ERA20	14

Part Number	Description	Spindle	A
MTSK40A05	MTSK-40 Adaptor ER16	ER16	30.26
MTSK40B03	MTSK-40 Adaptor ERA20	ERA20	14
MTSK40A03	MTSK-40 Adaptor ER25	ER25	32.6
MTSK40B02	MTSK-40 Adaptor ERA25	ERA25	16
MTSK40A02	MTSK-40 Adaptor ER32	ER32	35.6

## ACCESSORIES

### DRIVEN

#### MTSK-40 MILL ADAPTORS



Cod. MT	Handline Spindle	A
MTSK40D01	WELDON 6	8
MTSK40D21	WELDON 6	27.5
MTSK40D02	WELDON 8	8
MTSK40D03	WELDON 10	9
MTSK40D04	WELDON 12	14
MTSK40D05	WELDON 16	39.5
MTSK40D07	WELDON 20	39.5
MTSK40D24	WELDON 10	33
MTSK40D25	WELDON 12	35.5

Cod. MT	Handline Spindle	A
MTSK40G03	MR25	33.6

Cod. MT	Handline Spindle	Aluminum Dimensions	A	D	L
MTSK40C03	Ø 16x17	inch	15	16	17
MTSK40C02	Ø 16x17	inch	15.5	16	17
MTSK40C04	Ø 22x19	mm	17	22	19
MTSK40C05	Ø 27x21	mm	22	27	21

Cod. MT	Handline Spindle	A
MTSK40D11	WELDON 1/4"	8
MTSK40D12	WELDON 5/16"	8
MTSK40D13	WELDON 3/8"	9
MTSK40D14	WELDON 1/2"	14

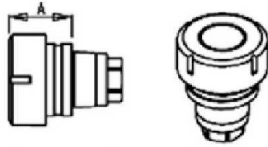
Cod. MT	Handline Spindle	A	D	L
MTSK40H01	MORSE-1	29		
MTSK40H02	MORSE-2	42		

Part Number	Description	Spindle	Dimension	A	D	L
MTSK40C03	MTSK-40 Adaptor Mill 3/4"	3/4"x3/4"	Inch	15.5	3/4"	3/4"
MTSK40C02	MTSK-40 Adaptor Mill 16x17	16x17	mm	15	16	17
MTSK40C04	MTSK-40 Adaptor Mill 22x19	22x19	mm	17	22	19
MTSK40C05	MTSK-40 Adaptor Mill 27x21	27x21	mm	22	27	21
MTSK40F01	MTSK-40 Adaptor Mill 1/2"	1/2" Arbor	Inch	32	1/2"	6.5
MTSK40D11	MTSK-40 Adaptor Weldon 1/4"	Weldon 1/4"		8		
MTSK40D12	MTSK-40 Adaptor Weldon 5/16"	Weldon 5/16"		8		
MTSK40D13	MTSK-40 Adaptor Weldon 3/8"	Weldon 3/8"		9		
MTSK40D14	MTSK-40 Adaptor Weldon 1/2"	Weldon 1/2"		14		
MTSK40D01	MTSK-40 Adaptor Weldon 6	Weldon 6		8		
MTSK40D21	MTSK-40 Adaptor Weldon 6	Weldon 6		27.5		
MTSK40D02	MTSK-40 Adaptor Weldon 8	Weldon 8		8		
MTSK40D03	MTSK-40 Adaptor Weldon 10	Weldon 10		9		
MTSK40D24	MTSK-40 Adaptor Weldon 10	Weldon 10		33		
MTSK40D04	MTSK-40 Adaptor Weldon 12	Weldon 12		14		
MTSK40D25	MTSK-40 Adaptor Weldon 12	Weldon 12		35.5		
MTSK40D06	MTSK-40 Adaptor Weldon 16	Weldon 16		39.5		
MTSK40D07	MTSK-40 Adaptor Weldon 20	Weldon 20		39.5		
MTSK40H01	MTSK-40 Adaptor Morse 1	MORSE-1		29		
MTSK40H02	MTSK-40 Adaptor Morse 2	MORSE-2		42		
MTSK40G03	MTSK-40 Adaptor MR25	MR25		33.6		
MTSK40T00	MTSK-40 Cover Plug					

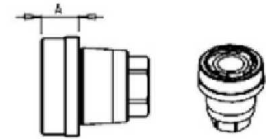
## ACCESSORIES

### DRIVEN

#### MTSK-50 MILL ADAPTORS



Cod. MT	Mandrina Spindel	A
MTSK50A01	ER40	46.6
MTSK50A02	ER32	35.6
MTSK50A03	ER25	32.6
MTSK50A05	ER16	30.3



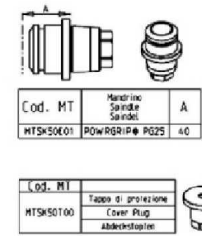
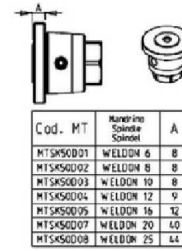
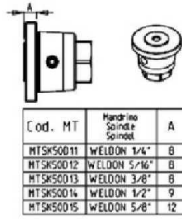
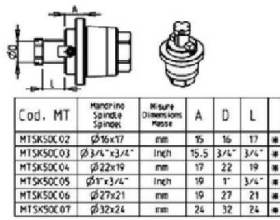
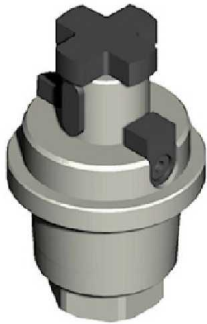
Cod. MT	Mandrina Spindel	A
MTSK50B01	ERA32	19
MTSK50B02	ERA25	14
MTSK50B03	ERA20	9

Part Number	Description	Spindle	A
MTSK50A05	MTSK-50 Adaptors ER16	ER16	30.3
MTSK50B03	MTSK-50 Adaptors ERA20	ERA20	9
MTSK50A03	MTSK-50 Adaptors ER25	ER25	32.6
MTSK50B02	MTSK-50 Adaptors ERA25	ERA25	14
MTSK50A02	MTSK-50 Adaptors ER32	ER32	35.6
MTSK50B01	MTSK-50 Adaptors ERA32	ERA32	19
MTSK50A01	MTSK-50 Adaptors ER40	ER40	46.6

## ACCESSORIES

### DRIVEN

#### MTSK-50 SHELL & MILL HOLDERS



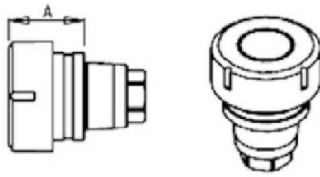
Part Number	Description	Spindle	Dimensions	A	D	L
MTSK50C03	MTSK-50 Adaptors Mill	3/4"x3/4"	Inch	15.5	3/4"	3/4"
MTSK50C05	MTSK-50 Adaptors Mill	1"x3/4"	Inch	19	1"	3/4"
MTSK50C02	MTSK-50 Adaptors Mill	16x17	mm	15	16	17
MTSK50C04	MTSK-50 Adaptors Mill	22x19	mm	17	22	19
MTSK50C06	MTSK-50 Adaptors Mill	27x21	mm	19	27	21
MTSK50C07	MTSK-50 Adaptors Mill	32x24	mm	24	32	24
MTSK50D11	MTSK-50 Adaptor Weldon 1/4"	Weldon 1/4"		8		
MTSK50D12	MTSK-50 Adaptor Weldon 5/16"	Weldon 5/16"		8		
MTSK50D13	MTSK-50 Adaptor Weldon 3/8"	Weldon 3/8"		8		
MTSK50D14	MTSK-50 Adaptor Weldon 1/2"	Weldon 1/2"		9		
MTSK50D15	MTSK-50 Adaptor Weldon 5/8"	Weldon 5/8"		12		
MTSK50D01	MTSK-50 Adaptor Weldon 6	Weldon 6		8		
MTSK50D02	MTSK-50 Adaptor Weldon 8	Weldon 8		8		
MTSK50D03	MTSK-50 Adaptor Weldon 10	Weldon 10		8		
MTSK50D04	MTSK-50 Adaptor Weldon 12	Weldon 12		9		
MTSK50D05	MTSK-50 Adaptor Weldon 16	Weldon 16		12		
MTSK50D07	MTSK-50 Adaptor Weldon 20	Weldon 20		40		
MTSK50D08	MTSK-50 Adaptor Weldon 25	Weldon 25		44		
MTSK50E01	MTSK-50 Adaptor POWERGRIP PG25	POWERGRIP PG25		40		
MTSK50T00	MTSK-50 Cover Plug					



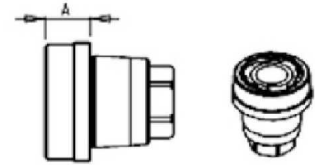
## ACCESSORIES

### DRIVEN

#### MTSK-63 CLAMPING UNITS ER



Cod. MT	Mandrino Spindle	A
MTSK63A01	ER50	53.9
MTSK63A02	ER40	39.6
MTSK63A03	ER32	36.6
MTSK63A04	ER25	33.6



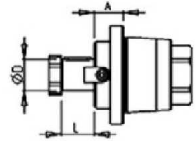
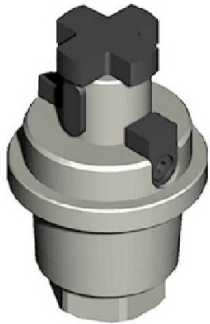
Cod. MT	Mandrino Spindle	A
MTSK63B01	ERA40	20
MTSK63B02	ERA32	18
MTSK63B03	ERA25	10

Part Number	Description	Spindle	A
MTSK63A04	MTSK-63 Adaptor ER25	ER25	33.6
MTSK63B03	MTSK-63 Adaptor ERA25	ERA25	10
MTSK63A03	MTSK-63 Adaptor ER32	ER32	36.6
MTSK63B02	MTSK-63 Adaptor ERA32	ERA32	18
MTSK63A02	MTSK-63 Adaptor ER40	ER40	39.6
MTSK63B01	MTSK-63 Adaptor ERA40	ERA40	20
MTSK63A01	MTSK-63 Adaptor ER50	ER50	53.9

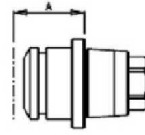
## ACCESSORIES

### DRIVEN

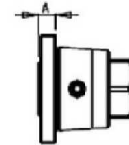
#### MTSK-63 CLAMPING UNITS MILL



Cod. MT	Mandriño Spindle Spindel	Misure Dimensions Masse	A	D	L
MTSK63C02	Ø16x17	mm	16	16	17
MTSK63C03	Ø3/4" x 3/4"	Inch	16.5	3/4"	3/4"
MTSK63C04	Ø22x19	mm	18	22	19
MTSK63C05	Ø1" x 3/4"	Inch	20	1"	3/4"
MTSK63C06	Ø27x21	mm	20	27	21
MTSK63C07	Ø27x21	mm	40	27	21



Cod. MT	Mandriño Spindle Spindel	A
MTSK63E01	POWERGRIP PG32	53



Cod. MT	Mandriño Spindle Spindel	A
MTSK63D01	WELDON 6	9
MTSK63D02	WELDON 8	9
MTSK63D03	WELDON 10	9
MTSK63D04	WELDON 12	10
MTSK63D05	WELDON 16	12
MTSK63D06	WELDON 20	14
MTSK63D17	WELDON 1"	14

Cod. MT	Tabco di protezione Cover Plug Abdeckstopfen
MTSK63T00	

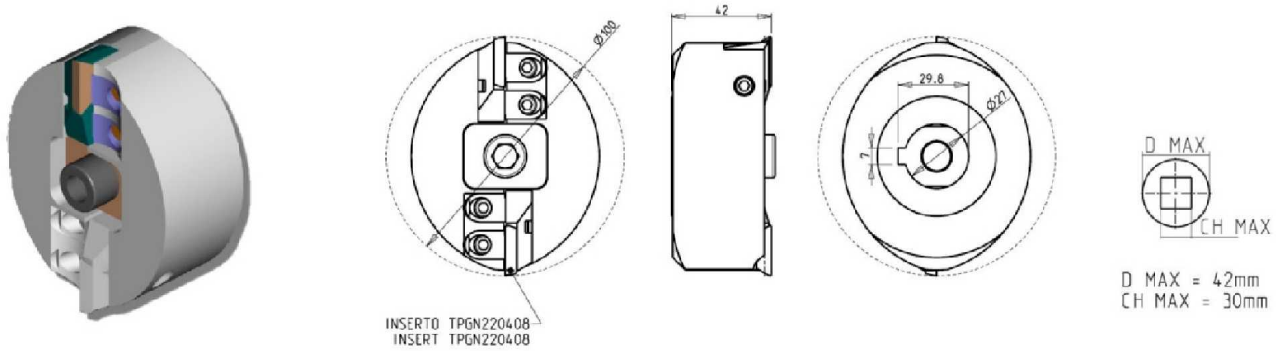


Part Number	Description	Spindle	Dimensions	A	D	L
MTSK63C03	MTSK-63 Adaptor Mill 3/4"x3/4"	3/4"x3/4"	Inch	16.5	3/4"	3/4"
MTSK63C05	MTSK-63 Adaptor Mill 1"x3/4"	1"x3/4"	Inch	20	1"	3/4"
MTSK63C02	MTSK-63 Adaptor Mill 16x17	16x17	mm	16	16	17
MTSK63C04	MTSK-63 Adaptor Mill 22x19	22x19	mm	18	22	19
MTSK63C06	MTSK-63 Adaptor Mill 27x21	27x21	mm	20	27	21
MTSK63C07	MTSK-63 Adaptor Mill 27x21	27x21	mm	40	27	21
MTSK63D17	MTSK-63 Adaptor Weldon 1"	Weldon 1"		14		
MTSK63D01	MTSK-63 Adaptor Weldon 6	Weldon 6		9		
MTSK63D02	MTSK-63 Adaptor Weldon 8	Weldon 8		9		
MTSK63D03	MTSK-63 Adaptor Weldon 10	Weldon 10		9		
MTSK63D04	MTSK-63 Adaptor Weldon 12	Weldon 12		10		
MTSK63D05	MTSK-63 Adaptor Weldon 16	Weldon 16		12		
MTSK63D06	MTSK-63 Adaptor Weldon 20	Weldon 20		14		
MTSK63E01	MTSK-63 POWERGRIP PG32	POWERGRIP PG32		53		
MTSK63T00	MTSK-63 Cover Plug					

## ACCESSORIES

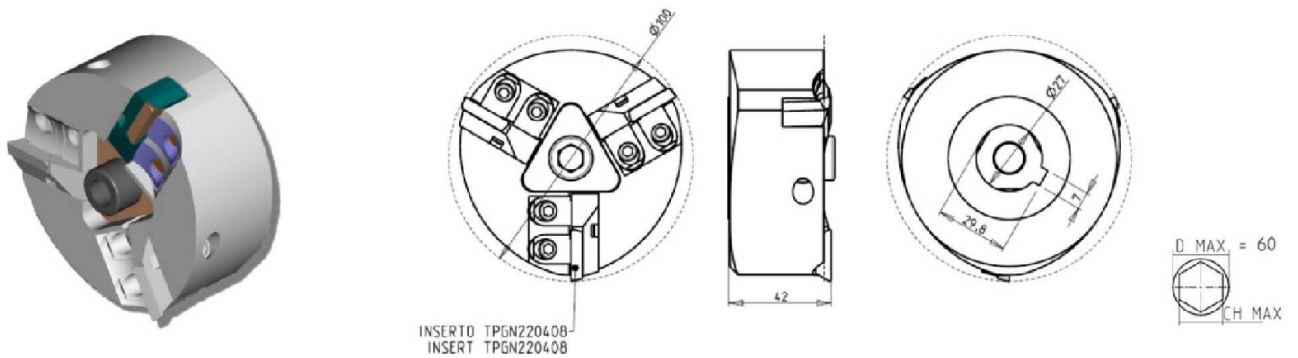
### DRIVEN

#### POLYGON MAKING MILL HEAD (2 INSERTS)



Part Number	Description
P01Z20A100	2-Insert Polygon Making Head (with Inserts)
TPGN220408	10 Inserts for Polygon Making Heads

#### POLYGON MAKING MILL HEAD (3 INSERTS)



Part Number	Description
P01Z30A100	2-Insert Polygon Making Head (with Inserts)
TPGN220408	10 Inserts for Polygon Making Heads

# ER COLLETS

ER COLLET NUMBER	DESCRIPTION	MD LIST PRICE
ER20 SET	ER20 Collet Set (15 Collets)	\$ 330.00
ERX20 SET	ER20 Sealed Collet Set (13 Collets)	\$ 395.00
ER25 SET	ER25 Collet Set (19 Collets)	\$ 375.00
ERX25 SET	ER25 Sealed Collet Set (17 Collets)	\$ 475.00
ER32 SET	ER32 Collet Set (21 Collets)	\$ 425.00
ERX32 SET	ER32 Sealed Collet Set (21 Collets)	\$ 595.00
ER40 SET	ER40 Collet Set (29 Collets)	\$ 695.00
ERX40 SET	ER40 Sealed Collet Set (27 Collets)	\$ 850.00



Phone: (810) 632-4446 / Fax: (810) 632-4467

# Table of Contents

## Alphabetized Listing

	DRIVEN	1-5, 8-32, 40-42, 45-53
	DRIVEN GEAR HOBBER	29
<b>(</b>		
(0-180) ADJUSTABLE ANGLE DRIVEN TOOL	5	
<b>0</b>		
0-180 ADJUSTABLE ANGLE DRIVEN TOOL GEARED-UP 1:2 H=72mm	28	
0-180 ADJUSTABLE ANGLE DRIVEN TOOL GEARED-UP 1:2 WITH DIGITAL DISPLAY H=72mm	28	
0-180 ADJUSTABLE ANGLE DRIVEN TOOL H=100mm	26	
0-180 ADJUSTABLE ANGLE DRIVEN TOOL H=54mm	25	
0-180 ADJUSTABLE ANGLE DRIVEN TOOL H=72mm	27	
0-180 ADJUSTABLE ANGLE DRIVEN TOOL WITH DIGITAL DISPLAY H=100mm	26	
0-180 ADJUSTABLE ANGLE DRIVEN TOOL WITH DIGITAL DISPLAY H=54mm	25	
0-180 ADJUSTABLE ANGLE DRIVEN TOOL WITH DIGITAL DISPLAY H=72mm	27	
<b>A</b>		
ACCESSORIES	45-53	
AXIAL DRIVEN TOOL	3	
AXIAL DRIVEN TOOL CAPTO C4 H=100mm	42	
AXIAL DRIVEN TOOL CAPTO C4 H=72mm	40	
AXIAL DRIVEN TOOL CAPTO C4 H=85mm	41	
AXIAL DRIVEN TOOL CAPTO C4 H=95mm	41	
AXIAL DRIVEN TOOL H=100mm	18	
AXIAL DRIVEN TOOL H=72mm	11	
AXIAL DRIVEN TOOL H=85mm	13	
AXIAL DRIVEN TOOL H=95mm	15	
AXIAL GEARED-DOWN 2:1 DRIVEN TOOL H=100mm	21	
AXIAL GEARED-UP 1:2 DRIVEN TOOL	21	
AXIAL OPPOSITE FACE DRIVEN TOOL H=100mm	23-24	
AXIAL OPPOSITE FACE DRIVEN TOOL H=72mm	22	
AXIAL OPPOSITE FACE DRIVEN TOOL H=85mm	22	
AXIAL OPPOSITE FACE DRIVEN TOOL H=95mm	23	
AXIAL OPPOSITE FACE TWIN DRIVEN TOOL	4	
AXIAL OPPOSITE FACE TWIN DRIVEN TOOL CAPTO C4 H=85mm	42	
AXIAL REAR-SET DRIVEN TOOL H=95mm	16	
AXIAL REINFORCED DRIVEN TOOL H=100mm	19	
AXIAL REINFORCED DRIVEN TOOL H=72mm	11	
AXIAL REINFORCED DRIVEN TOOL H=85mm	13	
AXIAL REINFORCED DRIVEN TOOL H=95mm	15	
AXIAL SINGLE BORING BAR HOLDER	36	
AXIAL SINGLE BORING BAR HOLDER 40mm H=100mm	37	
AXIAL SINGLE BORING BAR HOLDER 50mm H=100mm	37	
AXIAL SINGLE BORING BAR HOLDER 60mm H=100mm	38	
AXIAL SINGLE BORING BAR HOLDER H=100mm	7	
AXIAL SINGLE BORING BAR HOLDER H=72mm	37	
AXIAL SINGLE BORING BAR HOLDER H=85mm	7	
AXIAL SINGLE SIDE TWIN HEAD DRIVEN TOOL IN Y	4	
AXIAL SINGLE SIDE TWIN HEAD DRIVEN TOOL IN Y H=100mm	24	
AXIAL SINGLE STATIC TOOL	7	
AXIAL SINGLE STATIC TOOL CAPTO C4	44	
AXIAL SINGLE STATIC TOOL CAPTO C6	44	
AXIAL STATIC TOOL	36	
<b>B</b>		
BROACHING/SLOTTING DRIVEN TOOL 25mm STROKE H=75mm	5	
BROACHING/SLOTTING TOOL 25mm STROKE H=100mm	32	
BROACHING/SLOTTING TOOL 25mm STROKE H=85mm	31	
BROACHING/SLOTTING TOOL 50mm STROKE H=100mm	31	
BROACHING/SLOTTING TOOL 50mm STROKE H=85mm	30	
<b>D</b>		
DOUBLE AXIAL 2+2 BORING BAR HOLDER	39	
	DRIVEN	1-5, 8-32, 40-42, 45-53
	DRIVEN GEAR HOBBER	29
<b>G</b>		
GEAR HOBBER - REINFORCED	29	
<b>M</b>		
MTSK-32 ER ADAPTORS	45	
MTSK-32 MILL ADAPTORS	46	
MTSK-40 ER ADAPTORS	47	
MTSK-40 MILL ADAPTORS	48	
MTSK-50 MILL ADAPTORS	49	
MTSK-50 SHELL & MILL HOLDERS	50	
MTSK-63 CLAMPING UNITS ER	51	
MTSK-63 CLAMPING UNITS MILL	52	
<b>P</b>		
POLYGON MAKING MILL HEAD (2 INSERTS)	53	
POLYGON MAKING MILL HEAD (3 INSERTS)	53	
<b>Q</b>		
QUICK CHANGE AXIAL MTSK DRIVEN TOOL	3	
QUICK CHANGE AXIAL MTSK DRIVEN TOOL H=100mm	20	
QUICK CHANGE AXIAL MTSK DRIVEN TOOL H=72mm	12	
QUICK CHANGE AXIAL MTSK DRIVEN TOOL H=85mm	14	
QUICK CHANGE AXIAL MTSK DRIVEN TOOL H=95mm	16	
QUICK CHANGE AXIAL MTSK REINFORCED DRIVEN TOOL H=100mm	20	
QUICK CHANGE AXIAL MTSK REINFORCED DRIVEN TOOL H=72mm	12	
QUICK CHANGE AXIAL MTSK REINFORCED DRIVEN TOOL H=85mm	14	
QUICK CHANGE AXIAL MTSK REINFORCED DRIVEN TOOL H=95mm	17	
QUICK CHANGE AXIAL MTSK-40 DRIVEN TOOL FOR POWER SKIVING H=100mm	30	
QUICK CHANGE RADIAL MTSK DRIVEN TOOL	1	
QUICK CHANGE RADIAL MTSK REINFORCED DRIVEN TOOL	8	
<b>R</b>		
RADIAL BLADE HOLDER WITH BLADE KIT	35	
RADIAL BLADE HOLDER WITH INTERNAL COOLANT-BLADE KIT NOT INCLUDED	35	
RADIAL DOUBLE SIDE TWIN STATIC TOOL	34	
RADIAL DOUBLE STATIC HOLDER	33	
RADIAL DOUBLE STATIC HOLDER H=75mm	34	
RADIAL DRIVEN TOOL	1	
RADIAL DRIVEN TOOL CAPTO C4	40	
RADIAL GEARED-DOWN 2:1 DRIVEN TOOL REDIRECTED IN Z BY 80mm	9	
RADIAL GEARED-UP 1:2 DRIVEN TOOL REDIRECTED IN Z BY 36mm	9	
RADIAL INVERTED DRIVEN TOOL 250mm INTERAXIS	10	
RADIAL REINFORCED DRIVEN TOOL	8	
RADIAL SINGLE REAR-SET STATIC TOOL CAPTO C4	43	
RADIAL SINGLE REAR-SET STATIC TOOL CAPTO C6	43	
RADIAL SINGLE SIDE 3 OUTLET DRIVEN TOOL IN Y	10	
RADIAL SINGLE SIDE TWIN HEAD DRIVEN TOOL IN Y	2	
RADIAL SINGLE SIDE TWIN STATIC TOOL	6	
RADIAL SINGLE STATIC TOOL	6	
RADIAL SINGLE-SIDE TWIN HEAD DRIVEN TOOL IN Y-AXIS	9	
RADIAL STATIC HOLDER H=75mm	33	
RADIAL STATIC HOLDER H=90mm	33	
<b>S</b>		
See Accessories for MTSK Quick Change Tool Holder Clamps	1, 3, 8, 12, 14, 16-17, 20, 30	
STATIC	6-7, 33-39, 43-44	
<b>T</b>		
TAILSTOCK FOR SUBSPINDLE	39	
TC300 12 ST. - TC600 16 ST. - TTC300 12 ST. - TTS42/65 (BMT45 SHORT)	7	

# Table of Contents

## Alphabetized Listing

### T

TC300 12 ST. - TC600 16 ST. - TTC300 12 ST. - TTS42/65 (BMT45 SHORT) - MICROTURN 36/52	1-7
TC800 SMCY (BMT65)	8-44

### W

WORM GEAR DRIVEN TOOL	32
-----------------------	----



# Table of Contents

## Part Number Index

<b>O</b>			DWO 1130516	Axial Mill Head D=16mm, L=17mm	13
0321100	Gear Hobbing Tool 1:1	29	DWO 1130522	Axial Mill Head D=22mm, L=19mm	13
0322100	Gear Hobbing Tool 2:1 Geared Down	29	DWO 1130527	Axial Mill Head D=27mm, L=21mm	13
0700025	Radial Inverted 250mm Interaxis ER25	10	DWO 1140125	Axial ER25 H=100mm	18
0700032	Radial Inverted 250mm Interaxis ER32	10	DWO 1140132	Axial ER32 H=100mm	18
080003	Removable Tailstock Center	39	DWO 1140140	Axial ER40 H=100mm	18
0820200	Tailstock for Sub Spindle 38mm	39	DWO 1140225	Axial ER25 H=100mm Cool Thru*	18
0820200L	Tailstock for Sub Spindle 2"	39	DWO 1140232	Axial ER32 H=100mm Cool Thru*	18
0832500	Axial Single BBH: 25mm	36	DWO 1140240	Axial ER40 H=100mm Cool Thru*	18
0833810	Axial Single BBH: 1-1/2"	36	DWO 1140325	Axial ERA25 H=100mm	18
0834000	Axial Single BBH: 40mm	36	DWO 1140425	Axial ERA25 H=100mm Cool Thru*	18
0835000	Axial Single BBH: 50mm	36	DWO 1140516	Axial Mill Head 16x17mm H=100mm	18
0835080	Axial Single BBH: 2"	36	DWO 1140522	Axial Mill Head 22x19mm H=100mm	18
			DWO 1140527	Axial Mill Head 27x21mm H=100mm	18
<b>B</b>			DWO 1150132	Axial Opposite Face ER32+ER25 H=85mm	22
BLADEKIT	Blade Kit: 1 Blade, 10 Inserts	35	DWO 1152520	Axial Opposite Face ERA25+ERA20 H=85mm	22
<b>C</b>			DWO 1160132	Axial Opposite Face ER32+ER25 H=100mm	24
COOL THRU BLADEKIT	Blade Kit: 1 Blade, 10 Inserts	35	DWO 1162520	Axial Opposite Face ERA25+ERA20 H=100mm	24
<b>D</b>			DWO 1170140	Axial MTSK-40 H=72mm	12
DWO 0031100	Heavy Duty Gear Hobbing Tool 1:1	29	DWO 1170150	Axial MTSK-50 H=72mm	12
DWO 0032100	Heavy Duty Gear Hobbing Tool 2:1 Geared Down	29	DWO 1170240	Axial MTSK-40 H=72mm Cool Thru*	12
DWO 0070232	Axial Double Outlet ER32+ER32 H=100mm	23	DWO 1170250	Axial MTSK-50 H=72mm Cool Thru*	12
DWO 0073225	Axial Double Outlet ERA25+ERA32 H=100mm	23	DWO 1180140	Axial MTSK-40 H=85mm	14
DWO 0140125	Geared-Up 1:2 Redirected 36mm ER25	9	DWO 1180150	Axial MTSK-50 H=85mm	14
DWO 0204000	Axial Single BBH: 40mm, H=100mm	37	DWO 1180240	Axial MTSK-40 H=85mm Cool Thru*	14
DWO 0205000	Axial Single BBH: 50mm, H=100mm	37	DWO 1180250	Axial MTSK-50 H=85mm Cool Thru*	14
DWO 0213175	Axial Double BBH: 1 1/4"	39	DWO 1190140	Axial MTSK-40 H=100mm	20
DWO 0213200	Axial Double BBH: 32mm	39	DWO 1190150	Axial MTSK-50 H=100mm	20
DWO 0272000	Radial Double Static Tool : 20mm	33	DWO 1190240	Axial MTSK-40 H=100mm Cool Thru*	20
DWO 0272500	Radial Double Static Tool : 25mm	33	DWO 1190250	Axial MTSK-50 H=100mm Cool Thru*	20
DWO 0272540	Radial Double Static Tool : 1"	33	DWO 1230225	Axial Single Side Twin ER25	24
DWO 0282000	Axial Single Static 20mm	7	DWO 1231225	Axial Single Side Twin ER25 Cool Thru	24
DWO 0482000	Radial Static Tool: 20mm H=90mm	33	DWO 1231325	Axial Single Side Twin ERA25 Cool Thru	24
DWO 0482500	Radial Static Tool: 25mm H=90mm	33	DWO 1232225	Axial Single Side Twin ER25+ER25	24
DWO 0482540	Radial Static Tool: 1" H=90mm	33	DWO 1350325	Radial ER25 Single Side 3 Outlet in Y	10
DWO 0540216	Radial Y-Axis Double Outlet ER16	9	DWO 1384010	Rear-Set Radial Static Capto C4 Right Hand	43
DWO 0540225	Radial Y-Axis Double Outlet ER25	9	DWO 1384010LC	Rear-Set Radial Static Capto C4 Left Hand	43
DWO 0622500	Radial Double Side Twin Static Tool H=25mm	34	DWO 1410132	Radial Blade Holder with Blade Kit	35
DWO 0622540	Radial Double Side Twin Static Tool H=1"	34	DWO 1422500	Radial Static Tool: 25mm H=75mm	33
DWO 0672000	Radial Double Static Tool 20mm H=75mm	34	DWO 1422540	Radial Static Tool: 1" H=75mm	33
DWO 0672500	Radial Double Static Tool 25mm H=75mm	34	DWO 1446000	Axial Single BBH 60mm H=100mm	38
DWO 0700125	Axial ER25 H=72mm	11	DWO 1452500	Axial Static Tool 25mm	36
DWO 0700132	Axial ER32 H=72mm	11	DWO 1452540	Axial Static Tool 1"	36
DWO 0700140	Axial ER40 H=72mm	11	DWO 1511905	Radial Single Side Twin Static 3/4"	6
DWO 0700225	Axial ER25 H=72mm Cool Thru*	11	DWO 1512000	Radial Single Side Twin Static 20mm	6
DWO 0700232	Axial ER32 H=72mm Cool Thru*	11	DWO 1520100	Broaching / Slotting Tool H=100mm	31
DWO 0700240	Axial ER40 H=72mm Cool Thru*	11	DWO 1520200	Broaching / Slotting Tool H=100mm	32
DWO 0700325	Axial ERA25 H=72mm	11	DWO 1530100	Broaching / Slotting Tool H=85mm	30
DWO 0700425	Axial ERA25 H=72mm Cool Thru*	11	DWO 1530200	Broaching / Slotting Tool H=85mm	31
DWO 0700516	Axial Mill Head D=16mm, L=17mm	11	DWO 1540132	Radial Reinforced ER32	8
DWO 0700522	Axial Mill Head D=22mm, L=19mm	11	DWO 1540140	Radial Reinforced ER40	8
DWO 0700527	Axial Mill Head D=27mm, L=21mm	11	DWO 1540232	Radial Reinforced ER32 Cool Thru*	8
DWO 0710125	Axial Geared-Up ERA25 1:2	21	DWO 1540240	Radial Reinforced ER40 Cool Thru*	8
DWO 0710225	Axial Geared-Up ERA25 1:2 Cool Thru*	21	DWO 1540625	Radial Reinforced Weldon 25 Cool Thru*	8
DWO 0720132	Axial Opposite Face ER32+ER25 H=72mm	22	DWO 1540827	Radial Reinforced 27x21mm Cool Thru*	8
DWO 0722520	Axial Opposite Face ERA25+ERA20 H=72mm	22	DWO 1550140	Radial MTSK-40 Reinforced	8
DWO 0746000	Axial Single BBH: 60mm	38	DWO 1550150	Radial MTSK-50 Reinforced	8
DWO 1130125	Axial ER25 H=85mm	13	DWO 1550240	Radial MTSK-40 Reinforced Cool Thru*	8
DWO 1130132	Axial ER32 H=85mm	13	DWO 1550250	Radial MTSK-50 Reinforced Cool Thru*	8
DWO 1130140	Axial ER40 H=85mm	13	DWO 1580332	Radial Geared-Down 2:1 Redirected 80mm in Z	9
DWO 1130225	Axial ER25 H=85mm Cool Thru*	13	DWO 1730132L	Radial Blade Holder with Cool Thru (Left Hand)	35
DWO 1130232	Axial ER32 H=85mm Cool Thru*	13	DWO 1730132R	Radial Blade Holder with Cool Thru (Right Hand)	35
DWO 1130240	Axial ER40 H=85mm Cool Thru*	13	DWO 1770100	Axial MTSK-40 for Power Skiving	30
DWO 1130325	Axial ERA25 H=85mm	13	DWO 1850120	0-180 Adj. Angle ER20 with Digital Display	25
DWO 1130425	Axial ERA25 H=85mm Cool Thru*	13	DWO 1850125	0-180 Adj. Angle ER25 with Digital Display	25
			DWO 1850516	0-180 Adj. Angle 16x17mm with Digital Display	25
			DWO 1850519	0-180 Adj. Angle 3/4"x3/4" with Digital Display	25

# Table of Contents

## Part Number Index

DWO 1850522	0-180 Adj. Angle 22x19mm with Digital Display	25	DWO 2510325	Axial ERA25 H=95mm	15
DWO 1860120	0-180 Adj. Angle ER20 with Digital Display	26	DWO 2510425	Axial ERA25 H=95mm Cool Thru*	15
DWO 1860125	0-180 Adj. Angle ER25 with Digital Display	26	DWO 2510516	Axial 16x17mm H=95mm	15
DWO 1860516	0-180 Adj. Angle 16x17mm with Digital Display	26	DWO 2510522	Axial 22x19mm H=95mm	15
DWO 1860519	0-180 Adj. Angle 3/4"x3/4" with Digital Display	26	DWO 2510527	Axial 27x21mm H=95mm	15
DWO 1860522	0-180 Adj. Angle 22x19mm with Digital Display	26	DWO 2520132	Axial Opposite Face ER32+ER25 H=95mm	23
DWO 1920120	0-180 Adjustable Angle ER20	25	DWO 2522520	Axial Opposite Face ERA25+ERA20 H=95mm	23
DWO 1920125	0-180 Adjustable Angle ER25	25	DWO 2530140	Axial MTSK-40 H=95mm	16
DWO 1920516	0-180 Adjustable Angle 16x17mm	25	DWO 2530150	Axial MTSK-50 H=95mm	16
DWO 1920519	0-180 Adjustable Angle 3/4"x3/4"	25	DWO 2530240	Axial MTSK-40 H=95mm Cool Thru*	16
DWO 1920522	0-180 Adjustable Angle 22x19mm	25	DWO 2530250	Axial MTSK-50 H=95mm Cool Thru*	16
DWO 1930120	0-180 Adjustable Angle ER20	26	DWO 2540150	Axial Reinforced MTSK-50	17
DWO 1930125	0-180 Adjustable Angle ER25	26	DWO 2540250	Axial Reinforced MTSK-50 Cool Thru*	17
DWO 1930516	0-180 Adjustable Angle 16x17mm	26	DWO 2570132	Axial Rear-Set ER32	16
DWO 1930519	0-180 Adjustable Angle 3/4"x3/4"	26	DWO 2644010	Axial Single Static Tool Capto C4 Right Hand	44
DWO 1930522	0-180 Adjustable Angle 22x19mm	26	DWO 2644010LC	Axial Single Static Tool Capto C4 Left Hand	44
DWO 1940120	0-180 Adjustable Angle ERA20	27	DWO 2882500	Axial Single BBH 25mm	37
DWO 1940220	0-180 Adjustable Angle ERA20 Cool Thru*	27	DWO 2884000	Axial Single BBH 40mm	37
DWO 1940316	0-180 Adj. Angle Geared-Up ERA16	28	DWO 2928022	Driven Worm Gear Tool 22mmx12mm	32
DWO 1940416	0-180 Adj. Angle Geared-Up ERA16 Cool Thru*	28	DWO 2928125	Driven Worm Gear Tool 1"x12mm	32
DWO 1945120	0-180 Adj. Angle ERA20 with Digital Display	27	DWO 3080140	Axial Driven Tool Capto C4	40
DWO 1945220	0-180 Adj. Angle ERA20 with Digital Display Cool Thru*	27	DWO 3080240	Axial Driven Tool Capto C4 Cool Thru*	40
DWO 1945316	0-180 Adj. Angle Geared-Up ERA16 with Digital Display	28	DWO 3110140	Axial Driven Tool Capto C4	41
DWO 1945416	0-180 Adj. Angle Geared-Up ERA16 with Digital Display Cool Thru*	28	DWO 3110240	Axial Driven Tool Capto C4 Cool Thru*	41
DWO 2180150	Axial MTSK-50 H=72mm	12	DWO 3120140	Axial Driven Tool Capto C4	41
DWO 2180250	Axial MTSK-50 H=72mm Cool Thru*	12	DWO 3120240	Axial Driven Tool Capto C4 Cool Thru*	41
DWO 2190150	Axial MTSK-50 H=85mm	14	DWO 3130140	Axial Driven Tool Capto C4	42
DWO 2190250	Axial MTSK-50 H=85mm Cool Thru*	14	DWO 3130240	Axial Driven Tool Capto C4 Cool Thru*	42
DWO 2200150	Axial MTSK-50 H=100mm	20	DWO 3140240	Axial Opposite Face Twin Capto C4+C4	42
DWO 2200250	Axial MTSK-50 H=100mm Cool Thru*	20	DWO 3150140	Radial Driven Tool Capto C4	40
DWO 2251905	Radial Single Static 3/4"	6	DWO 3166010	Axial Single Static Tool Capto C6 Right Hand	44
DWO 2252000	Radial Single Static 20mm	6	DWO 3166010LC	Axial Single Static Tool Capto C6 Left Hand	44
DWO 2261905	Axial Single Static 3/4"	7	DWO 3176010	Radial Single Rear-Set Static Tool Capto C6 Right Hand	43
DWO 2273175	Axial Single BBH 1-1/4"	7	DWO 3176010LC	Radial Single Rear-Set Static Tool Capto C6 Left Hand	43
DWO 2273200	Axial Single BBH 32mm	7	<b>K</b>		
DWO 2283175	Axial Single BBH 1-1/4"	7	KIT 1000001	Plug for 32mm or 1 1/4" BBH to Make Cool Thru	39
DWO 2283200	Axial Single BBH 32mm	7	KIT 1000001	Plug for 32mm or 1 1/4" BBH to Make Cool Thru	7
DWO 2360132	Axial Geared-Down 2:1 ER32	21	KIT 1000001	Plug for 32mm or 1 1/4" BBH to Make Cool Thru	7
DWO 2360140	Axial Geared-Down 2:1 ER40	21	KIT 1000003	Plug for 40mm BBH to Make Cool Thru	37
DWO 2360232	Axial Geared-Down 2:1 ER32 Cool Thru	21	KIT 1000006	Plug for 25mm BBH to Make Cool Thru	37
DWO 2360240	Axial Geared-Down 2:1 ER40 Cool Thru	21	KIT 1003002	Plug & Seal Kit for 50mm or 2" BBH to Make IC	36
DWO 2360725	Axial Geared-Down 2:1 WELDON 25	21	KIT 1003002	Plug & Seal Kit for 50mm or 2" BBH to Make Cool Thru	37
DWO 2360825	Axial Geared-Down 2:1 WELDON 25 Cool Thru	21	KIT 1003003	Plug & Seal Kit for 40mm BBH to Make Cool Thru	37
DWO 2470132	Axial Reinforced ER32	11	KIT 1003003	Plug & Seal Kit for 40mm BBH to Make IC	36
DWO 2470232	Axial Reinforced ER32 Cool Thru*	11	KIT 1003004	Plug & Seal Kit for 1 1/2" BBH to Make IC	36
DWO 2470725	Axial Reinforced Weldon 25	11	KIT 1003006	Plug & Seal Kit for 25mm BBH to Make IC	36
DWO 2470825	Axial Reinforced Weldon 25 Cool Thru*	11	KIT 1003025	Plug & Seal Kit for 60mm BBH to Make Cool Thru	38
DWO 2480132	Axial Reinforced ER32	13	<b>M</b>		
DWO 2480232	Axial Reinforced ER32 Cool Thru*	13	MTSK32A03	MTSK-32 Adaptor ER25	45
DWO 2480725	Axial Reinforced Weldon 25	13	MTSK32B03	MTSK-32 Adaptor ERA20	45
DWO 2480825	Axial Reinforced Weldon 25 Cool Thru*	13	MTSK32B04	MTSK-32 Adaptor ERA16	45
DWO 2490132	Axial Reinforced ER32	19	MTSK32C02	MTSK-32 Adaptor Mill 16x17	46
DWO 2490232	Axial Reinforced ER32 Cool Thru*	19	MTSK32D03	MTSK-32 Adaptor Weldon 10	46
DWO 2490725	Axial Reinforced Weldon 25	19	MTSK32T00	MTSK-32 Cover Plug	46
DWO 2490825	Axial Reinforced Weldon 25 Cool Thru*	19	MTSK40A02	MTSK-40 Adaptor ER32	47
DWO 2500132	Axial Reinforced ER32	15	MTSK40A03	MTSK-40 Adaptor ER25	47
DWO 2500232	Axial Reinforced ER32 Cool Thru*	15	MTSK40A05	MTSK-40 Adaptor ER16	47
DWO 2500725	Axial Reinforced Weldon 25	15	MTSK40B02	MTSK-40 Adaptor ERA25	47
DWO 2500825	Axial Reinforced Weldon 25 Cool Thru*	15	MTSK40B03	MTSK-40 Adaptor ERA20	47
DWO 2510125	Axial ER25 H=95mm	15	MTSK40C02	MTSK-40 Adaptor Mill 16x17	48
DWO 2510132	Axial ER32 H=95mm	15	MTSK40C03	MTSK-40 Adaptor Mill 3/4"	48
DWO 2510140	Axial ER40 H=95mm	15	MTSK40C04	MTSK-40 Adaptor Mill 22x19	48
DWO 2510225	Axial ER25 H=95mm Cool Thru*	15	MTSK40C05	MTSK-40 Adaptor Mill 27x21	48
DWO 2510232	Axial ER32 H=95mm Cool Thru*	15	MTSK40D01	MTSK-40 Adaptor Weldon 6	48
DWO 2510240	Axial ER40 H=95mm Cool Thru*	15			

# Table of Contents

## Part Number Index

MTSK40D02	MTSK-40 Adaptor Weldon 8	48	P01Z20A100	2-Insert Polygon Making Head (with Inserts)	53
MTSK40D03	MTSK-40 Adaptor Weldon 10	48	P01Z30A100	2-Insert Polygon Making Head (with Inserts)	53
MTSK40D04	MTSK-40 Adaptor Weldon 12	48	<b>S</b>		
MTSK40D06	MTSK-40 Adaptor Weldon 16	48	SPN0010325	Radial Driven Tool ERA25	1
MTSK40D07	MTSK-40 Adaptor Weldon 20	48	SPN0010425	Radial Driven Tool ERA25 Cool Thru*	1
MTSK40D11	MTSK-40 Adaptor Weldon 1/4"	48	SPN0020125	Axial Driven Tool ER25	3
MTSK40D12	MTSK-40 Adaptor Weldon 5/16"	48	SPN0020132	Axial Driven Tool ER32	3
MTSK40D13	MTSK-40 Adaptor Weldon 3/8"	48	SPN0020225	Axial Driven Tool ER25 Cool Thru*	3
MTSK40D14	MTSK-40 Adaptor Weldon 1/2"	48	SPN0020232	Axial Driven Tool ER32 Cool Thru*	3
MTSK40D21	MTSK-40 Adaptor Weldon 6	48	SPN0020325	Axial Driven Tool ERA25	3
MTSK40D24	MTSK-40 Adaptor Weldon 10	48	SPN0020425	Axial Driven Tool ERA25 Cool Thru*	3
MTSK40D25	MTSK-40 Adaptor Weldon 12	48	SPN0020516	Axial Driven Tool Ø16x17	3
MTSK40F01	MTSK-40 Adaptor Mill 1/2"	48	SPN0020522	Axial Driven Tool Ø22x19	3
MTSK40G03	MTSK-40 Adaptor MR25	48	SPN0032520	Axial Opposite Face ERA25+ERA20	4
MTSK40H01	MTSK-40 Adaptor Morse 1	48	SPN0033225	Axial Opposite Face ER32+ER25	4
MTSK40H02	MTSK-40 Adaptor Morse 2	48	SPN0040216	Radial Single Side Twin ERA16	2
MTSK40T00	MTSK-40 Cover Plug	48	SPN0050216	Axial Single Side Twin ERA16	4
MTSK50A01	MTSK-50 Adaptors ERA40	49	SPN0060200	Broaching/Slotting Driven Tool 25mm Stroke	5
MTSK50A02	MTSK-50 Adaptors ER32	49	SPN0070116	(0-180) Adj. Angle ERA16	5
MTSK50A03	MTSK-50 Adaptors ER25	49	SPN0080132	Axial MTSK-32 Driven Tool	3
MTSK50A05	MTSK-50 Adaptors ER16	49	SPN0080232	Axial MTSK-32 Driven Tool Cool Thru*	3
MTSK50B01	MTSK-50 Adaptors ERA32	49	SPN0090132	Radial MTSK-32 Driven Tool	1
MTSK50B02	MTSK-50 Adaptors ERA25	49	SPN0090232	Radial MTSK-32 Driven Tool Cool Thru*	1
MTSK50B03	MTSK-50 Adaptors ERA20	49	<b>T</b>		
MTSK50C02	MTSK-50 Adaptors Mill	50	TPGN220408	10 Inserts for Polygon Making Heads	53
MTSK50C03	MTSK-50 Adaptors Mill	50	TPGN220408	10 Inserts for Polygon Making Heads	53
MTSK50C04	MTSK-50 Adaptors Mill	50			
MTSK50C05	MTSK-50 Adaptors Mill	50			
MTSK50C06	MTSK-50 Adaptors Mill	50			
MTSK50C07	MTSK-50 Adaptors Mill	50			
MTSK50D01	MTSK-50 Adaptor Weldon 6	50			
MTSK50D02	MTSK-50 Adaptor Weldon 8	50			
MTSK50D03	MTSK-50 Adaptor Weldon 10	50			
MTSK50D04	MTSK-50 Adaptor Weldon 12	50			
MTSK50D05	MTSK-50 Adaptor Weldon 16	50			
MTSK50D07	MTSK-50 Adaptor Weldon 20	50			
MTSK50D08	MTSK-50 Adaptor Weldon 25	50			
MTSK50D11	MTSK-50 Adaptor Weldon 1/4"	50			
MTSK50D12	MTSK-50 Adaptor Weldon 5/16"	50			
MTSK50D13	MTSK-50 Adaptor Weldon 3/8"	50			
MTSK50D14	MTSK-50 Adaptor Weldon 1/2"	50			
MTSK50D15	MTSK-50 Adaptor Weldon 5/8"	50			
MTSK50E01	MTSK-50 Adaptor POWERGRIP PG25	50			
MTSK50T00	MTSK-50 Cover Plug	50			
MTSK63A01	MTSK-63 Adaptor ER50	51			
MTSK63A02	MTSK-63 Adaptor ER40	51			
MTSK63A03	MTSK-63 Adaptor ER32	51			
MTSK63A04	MTSK-63 Adaptor ER25	51			
MTSK63B01	MTSK-63 Adaptor ERA40	51			
MTSK63B02	MTSK-63 Adaptor ERA32	51			
MTSK63B03	MTSK-63 Adaptor ERA25	51			
MTSK63C02	MTSK-63 Adaptor Mill 16x17	52			
MTSK63C03	MTSK-63 Adaptor Mill 3/4"x3/4"	52			
MTSK63C04	MTSK-63 Adaptor Mill 22x19	52			
MTSK63C05	MTSK-63 Adaptor Mill 1"x3/4"	52			
MTSK63C06	MTSK-63 Adaptor Mill 27x21	52			
MTSK63C07	MTSK-63 Adaptor Mill 27x21	52			
MTSK63D01	MTSK-63 Adaptor Weldon 6	52			
MTSK63D02	MTSK-63 Adaptor Weldon 8	52			
MTSK63D03	MTSK-63 Adaptor Weldon 10	52			
MTSK63D04	MTSK-63 Adaptor Weldon 12	52			
MTSK63D05	MTSK-63 Adaptor Weldon 16	52			
MTSK63D06	MTSK-63 Adaptor Weldon 20	52			
MTSK63D17	MTSK-63 Adaptor Weldon 1"	52			
MTSK63E01	MTSK-63 POWERGRIP PG32	52			
MTSK63T00	MTSK-63 Cover Plug	52			